



PRO-TRUCK COILOVER 2.0: E86-35-037-01-20

15-20 Ford F-150

Notes

Kit Contents

Description	Part Number	Quantity
Coilover Assembly2.0	35156.9003	2
Height Adjustment Tool	PDK.TOOL	1
Hardware Kit	35148.8000HK	2

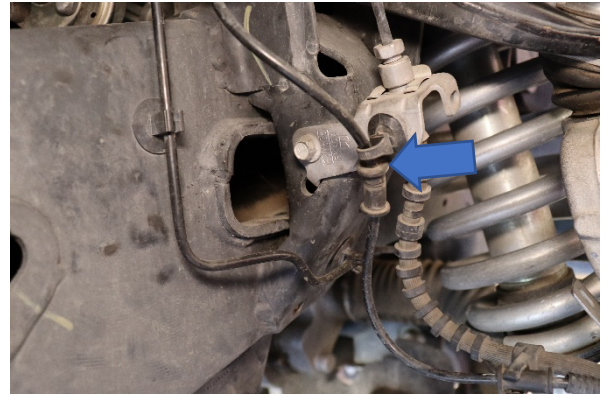
Installation Notes

Read all instructions before beginning installation

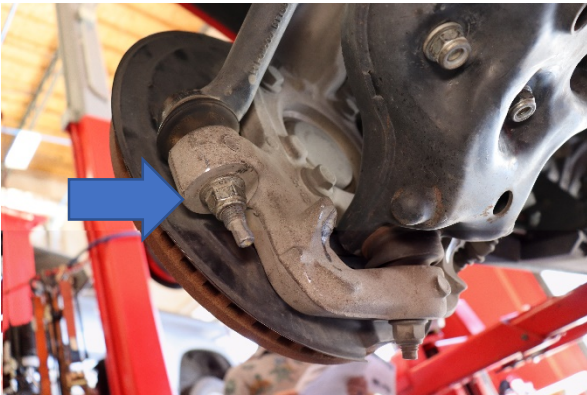
- Only qualified mechanics experienced in the installation and removal of suspension components should perform this installation.
- Use of a hoist and screw jack is highly recommended and will substantially reduce installation time.
- Never work on or under a vehicle unless it is properly supported by safety stands and wheels are blocked.
- Never use impact wrenches or impact guns to install or remove shock absorber piston components, shafts and Piston rod nuts.
- All Eibach springs should be installed with the Eibach logo right-side-up.
- After Installation, inspect and adjust the following: Wheel Alignment; tire/wheel fender clearance when using aftermarket wheels or tires; brake line clearance and attachments; anti-lock-brake system sensors.



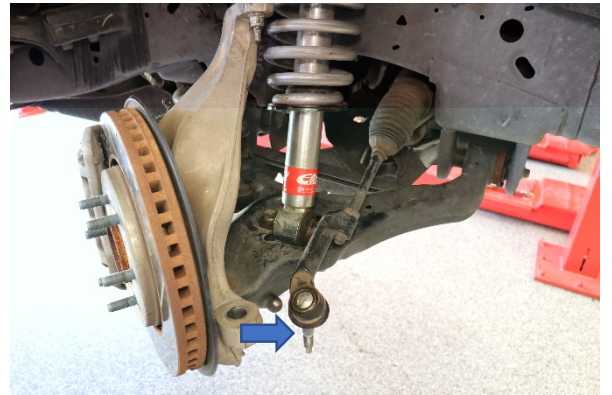
Step 1. Loosen and remove the wheel speed sensor bolt along with the brake hose bracket bolt and set them aside.



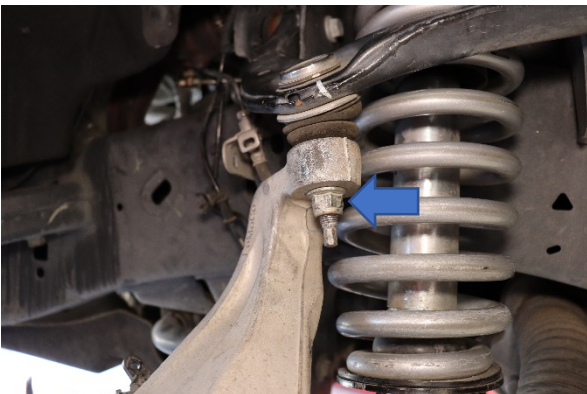
Step 2. Detach the wheel speed sensor from the upper brake hose bracket.



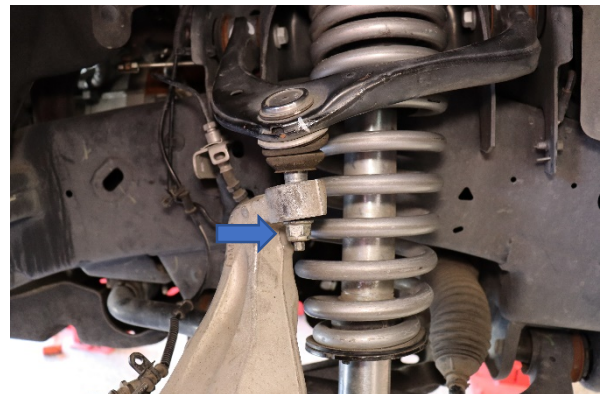
Step 3. Remove the tie-rod nut and disconnect the tie-rod from the knuckle



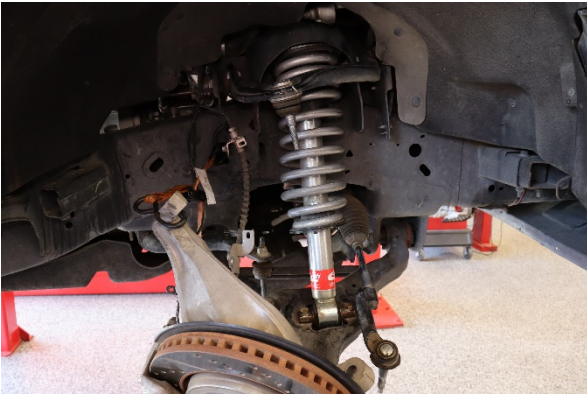
Step 3b.



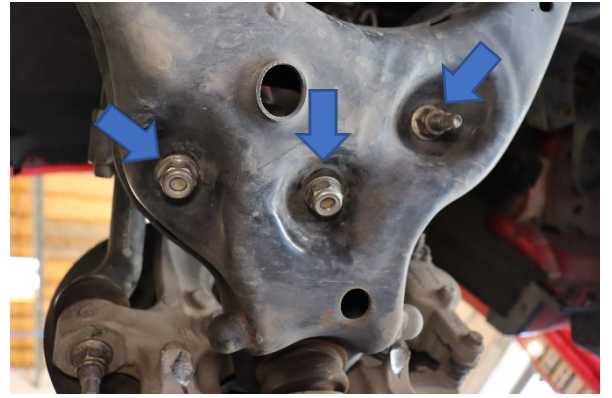
Step 4. Loosen the upper ball joint nut.



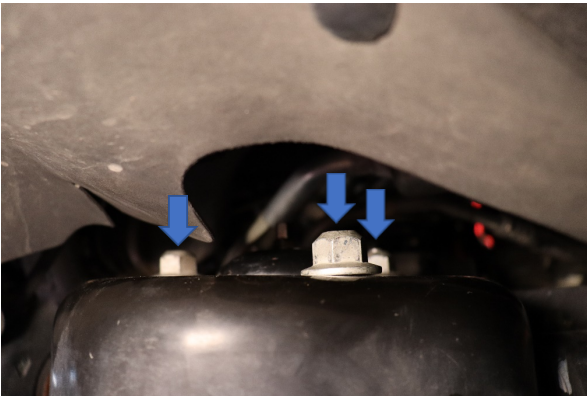
Step 5. Separate the ball joint from the knuckle.



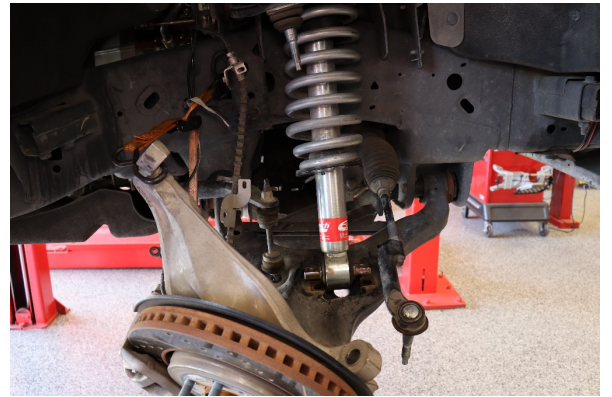
Step 6. Secure the spindle so that there is no tension in the brake line.



Step 7. Remove the shock assembly lower nuts.
Step 8. Remove the front stabilizer link lower nut.



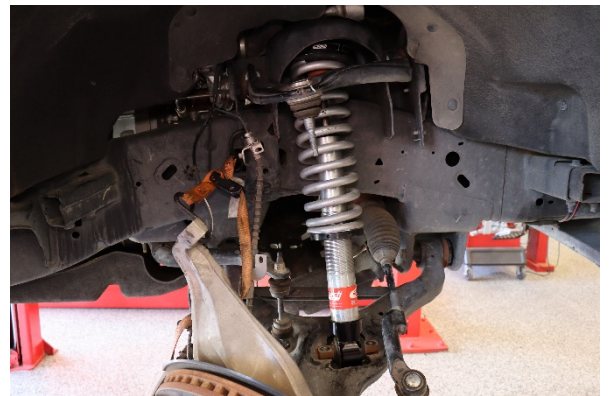
Step 9. Remove the shock absorber and spring assembly upper nuts.



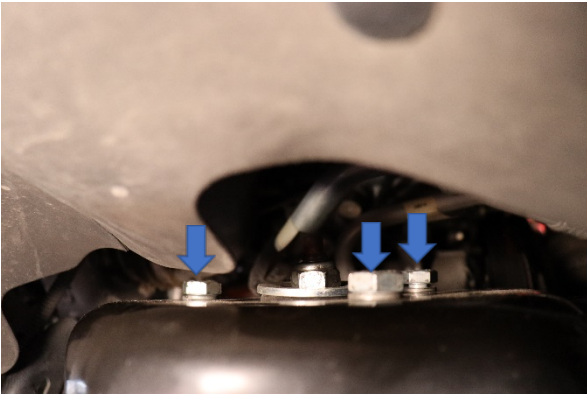
Step 10. Press downward on the lower control arm and remove the strut assembly.



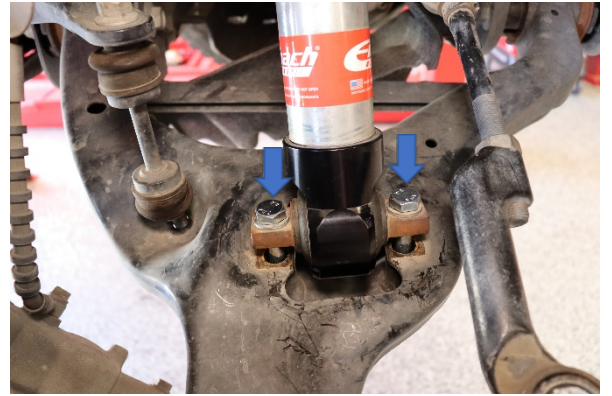
Step 10b.



Step 11. Install new Eibach Coilover shocks

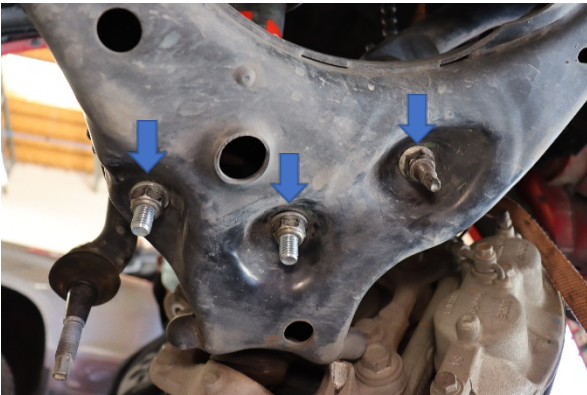


Step 12. Install the 3 17mm bolts provided with the kit along with the washers to the top hat on shock tower.



Step 13. Install the lower shock bolts and secure the nuts with washers at the bottom.

Step 14. Re-insert the stabilizer bar end link and secure with the nut at the bottom.

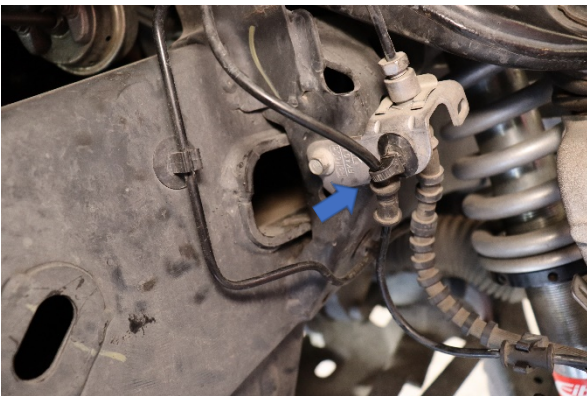


Step 13b. Fasten lower shock nuts

Step 14b. Fasten the lower stabilizer bar end link



Step 15. Use a pry bar to ease the upper control arm down into the spindle and fasten the nut on the bottom.



Step 16. Reattach the wheel speed sensor to the upper brake hose bracket.



Step 17. Reattach the wheel speed sensor bolt along with the brake hose bracket bolt.

Step 18. Repeat this process on the other side. Double check to make sure everything is properly tightened, then road test the vehicle and retighten if necessary.