



INSTALLATION INSTRUCTIONS

FTS22296		INTRUSION BEAM OFFSET KIT
2	FT30882	INTRUSION BEAM (FRONT)
2	FT30884	INTRUSION BEAM (REAR)
1	FT22296i	INSTRUCTIONS
1	FT30889	HARDWARE KIT

FT30889 - HARDWARE KIT		LOCATION
4	1/2-13 X 4" HEX BOLT	
4	1/2-13 X 3-1/2" HEX BOLT	
16	1/2 SAE WASHER	
8	1/2-13 C-LOCK NUT	
1	THREAD LOCKING COMPOUND 1 MIL	

2019 FORD RANGER 4WD

INTRUSION BEAM OFFSET KIT

FTS22296

NOTE: TO ORDER WEARABLE REPLACEMENT COMPONENTS DO NOT USE PART NUMBERS SHOWN ON THIS INSTRUCTION SHEET. GO TO FABTECH WEBSITE AND LOOK UP WEARABLE REPLACEMENT PARTS TO FIND THE PROPER PART NUMBER TO ORDER.

- TOOL LIST -

Required Tools (Not Included)

- Basic Hand Tools
- Floor Jack
- Jack Stands
- Assorted Metric and S.A.E sockets, and Allen wrenches
- Torque Wrench
- Die Grinder w/ Cutoff Wheel or Sawzall

- PRE-INSTALLATION NOTES -

READ THIS BEFORE YOU BEGIN INSTALLATION -

Check all parts to the parts list above before beginning installation.

Read all instructions thoroughly from start to finish before beginning the installation. If these instructions are not properly followed severe frame, driveline and / or suspension damage may occur.

Check your local city and state laws prior to the installation of this system for legality. Do not install if not legal in your area.

Prior to the installation of this suspension system perform a front end alignment and record. Do not install this system if the vehicle alignment is not within factory specifications. Check for frame and suspension damage prior to installation.

The installation of this suspension system should be performed by two professional mechanics.

This suspension must be installed with Fabtech shock absorbers.

Use the provided thread locking compound on all hardware.

WARNING- Installation of this system will alter the center of gravity of the vehicle and may increase roll over as compared to stock.

Vehicles that receive oversized tires should check ball joints, uniballs, tie rods ends, pitman arm and idler arm every 2500-5000 miles for wear and replace as needed.

Verify differential fluid is at manufactures recommended level prior to kit installation. Installation of the kit will reposition the differential and the fill plug hole may be in a different position. (For example, if the manufacture recommends 3 quarts of fluid, make sure the diff has 3 quarts of fluid). Check your specific manual for correct amount of fluid.

FOOTNOTES -

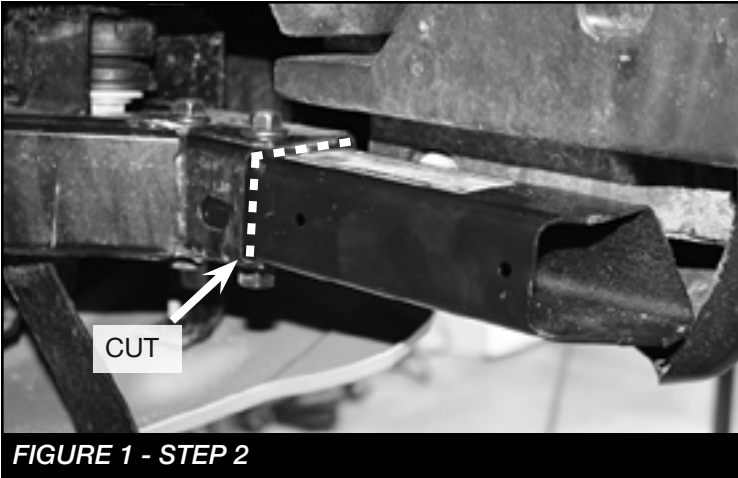
-

- INSTRUCTIONS -

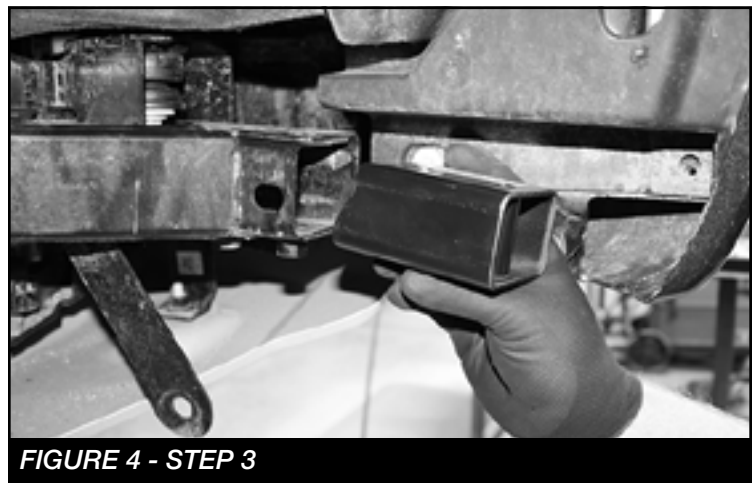
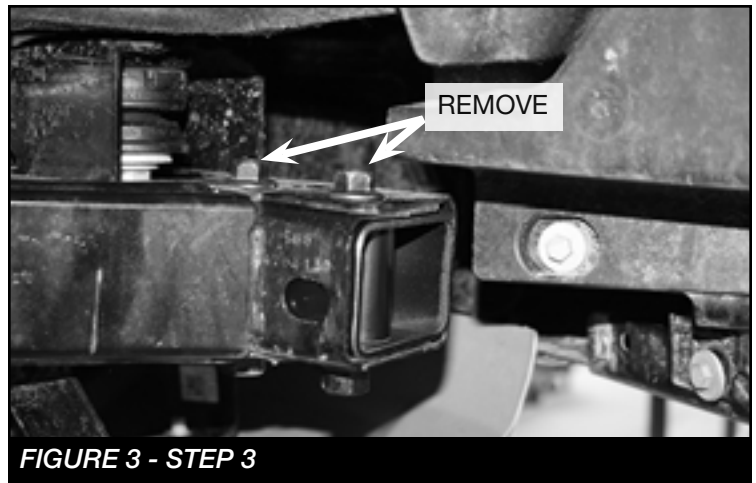
1. Disconnect the negative terminal on the battery. Jack up the front end of the truck and support the frame rails with jack stands. **NEVER WORK UNDER AN UNSUPPORTED VEHICLE!** Remove the front tires.

FRONT INTRUSION BEAM

2. **PASSENGER SIDE:** Locate where the factory front beam is inserted into the frame. Using a saw zaw, cut the beam only flush with the frame it is inserted into then discard. **SEE FIGURES 1-2**



3. Remove the two factory bolts attaching the rest of the beam inside the frame, then remove the beam and save. **SEE FIGURES 3-4**



4. Using a cut off wheel. Cut the two factory welded nuts off of the frame. Sand to a smooth finish then drill out the holes to 1/2" **SEE FIGURES 5-7**

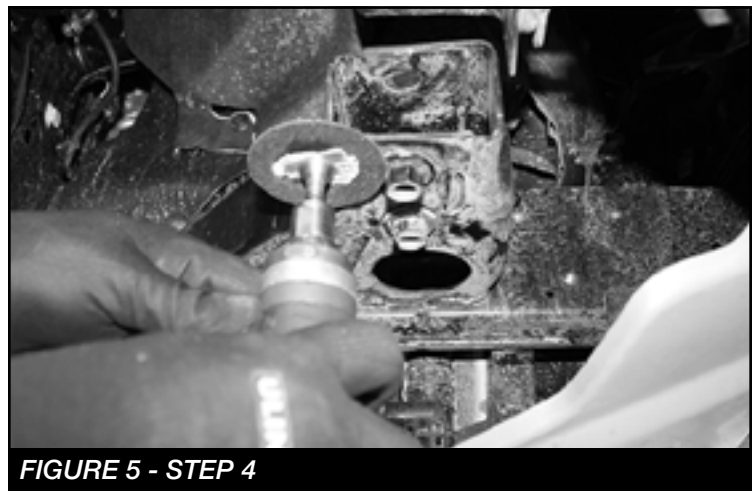




FIGURE 6 - STEP 4



FIGURE 7 - STEP 4

5. On the plastic inner liner. Measure and mark 3-1/2" from the edge and along the bend line then remove. **SEE FIGURES 8-9**

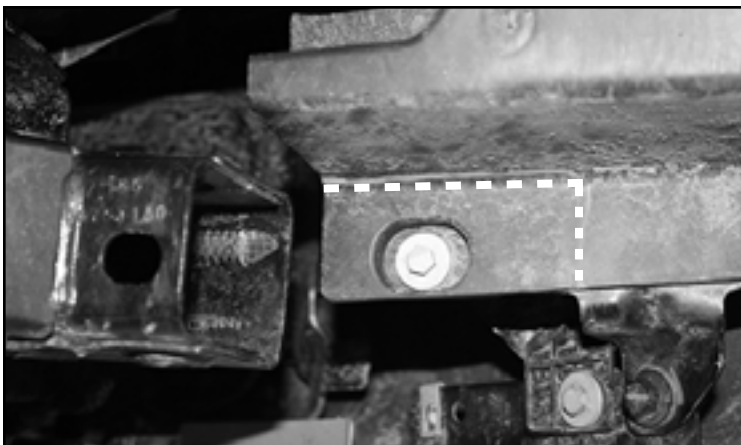


FIGURE 8 - STEP 5



FIGURE 9 - STEP 5

6. Re-install the beam removed in Step 3. Then, install FT30882 (Intrusion beam front) onto the factory frame using the supplied 1/2" x 4" bolts and hardware. **NOTE: Install the bolts from the bottom.** Torque to 106 ft-lbs. **SEE FIGURES 10-12**



FIGURE 10 - STEP 6



FIGURE 11 - STEP 6



FIGURE 12 - STEP 6

7. Repeat Steps 2-6 on the driver side.

REAR INTRUSION BEAM

8. **PASSENGER SIDE:** On the rear intrusion beam inside the front wheel well. Cut the beam **ONLY** flush with the frame it is inserted into then discard. **SEE FIGURES 13-14**

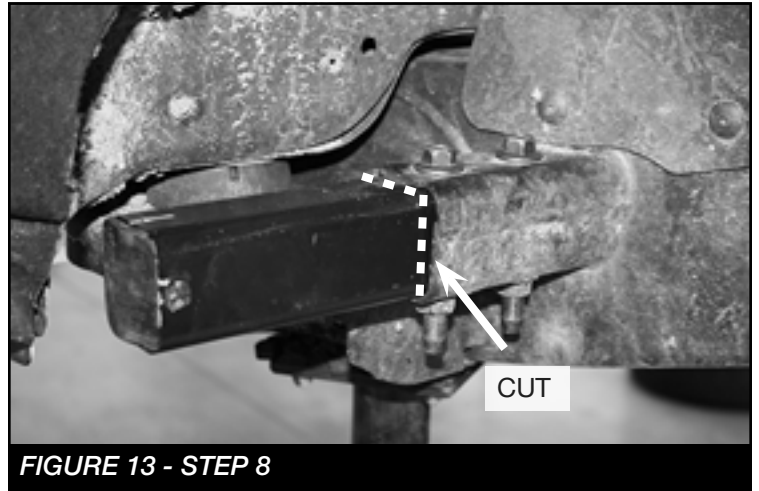


FIGURE 13 - STEP 8



FIGURE 14 - STEP 8

9. Remove the two factory bolts and discard. Then, remove the inserted piece of the beam and save. **SEE FIGURE 15**



FIGURE 15 - STEP 9

10. Using a cut off wheel. Cut the two factory welded nuts off of the frame. Sand to a smooth finish then drill out the holes to 1/2" **SEE FIGURES 16-18**



FIGURE 16 - STEP 10



FIGURE 17 - STEP 10



FIGURE 18 - STEP 10

11. Re-install the beam removed in Step 9. Then, install FT30884 (Intrusion beam rear) onto the factory frame using the supplied 1/2" x 3-1/2" bolts and hardware. Torque to 106 ft-lbs. **SEE FIGURES 19-20**



FIGURE 19 - STEP 11



FIGURE 20 - STEP 11

12. Repeat Steps 8-11 on the Driver side.
13. Install tires and wheels and torque lug nuts to wheel manufacturer's specifications. Turn front tires left to right and check for appropriate tire clearance. **Note - Some oversized tires may require trimming of the front bumper & valance.**
14. Recheck all bolts for proper torque. .
15. Install Driver Warning Decal. Complete product registration card and mail to Fabtech in order to receive future safety and technical bulletins on this suspension.

Vehicles that will receive oversized tires should check ball joints, uniballs and all steering components every 2500-5000 miles for wear and replace as required.

RETORQUE ALL NUTS, BOLTS AND LUGS AFTER 50 MILES AND PERIODICALLY THEREAFTER.