



**2008-2015 FORD SUPER DUTY 4WD
 REAR LIFT FOR 8" F-250 w/ FACTORY OVER LOAD
 LEAF FTS22105 REAR LIFT KIT**

PARTS LIST:

Qty	FTS22105 Part #	F-250 8" Rear Kit Description
2	FTBK5	5" Block
4	FT749U	U-Bolt
1	FT30316	Hdwr Sub-Assembly Kit
2	FT30275	Add-A-Leaf
1	FT30240BK	Drv. Sway Bar Brkt
1	FT30241BK	Pass. Sway Bar Brkt
1	FTS419	Shim Kit

Qty	FT30316 Part #	Hdwr Sub-Assembly Kit Description
1	FT58H	5/8" Hardware
2	FT90080	Center Pin Kit
2	FT30284	Leaf Spring Spacer
4	37000005081	3/8" SAE Flat Washer
2	37160003052	3/8"-16 NyLok Nut
2	37161001081	3/8"-16 x 1" Bolt
4	50000005081	1/2" SAE Flat Washer
2	50130003052	1/2"-13 Nylok Nut
2	50131501081	1/2"-13 x 1 1/2" Bolt
1	FT22105i	Instruction Sheet

Tool List: (Not Included)

Floor Jack

Jack Stands

Assorted Metric and S.A.E Sockets & Allen Wrenches

READ ALL INSTRUCTIONS THOROUGHLY FROM START TO FINISH BEFORE BEGINNING INSTALLATION!

CHECK ALL PARTS INCLUDED IN THIS KIT TO THE PARTS LIST ABOVE BEFORE BEGINNING INSTALLATION OF THIS KIT. IF ANY PIECES ARE MISSING, CONTACT FABTECH.

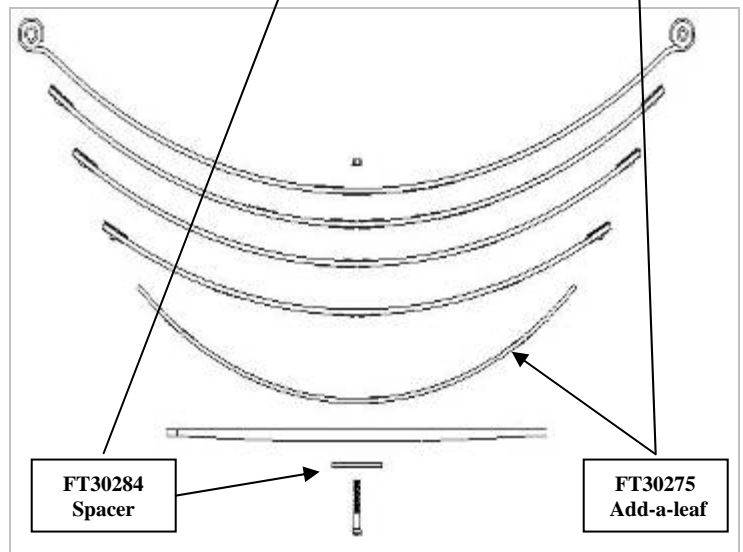
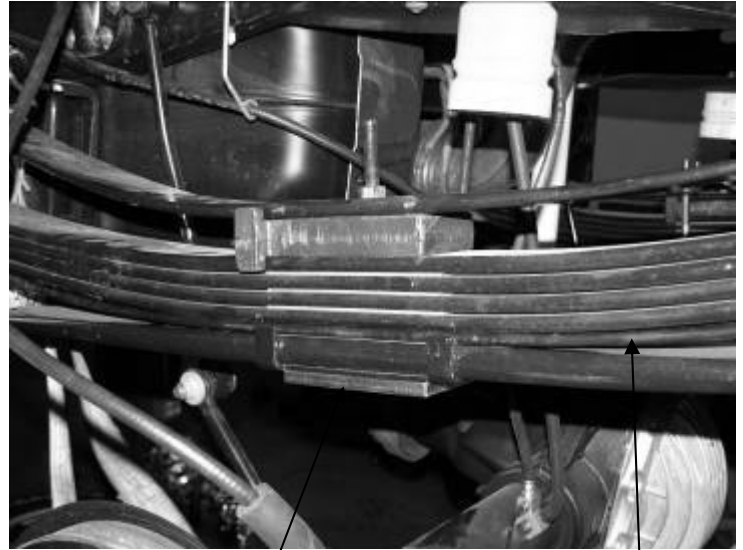
FOOTNOTES - VEHICLES EQUIPPED WITH A REAR SWAY BAR ORDER PART # FTS92033 (16" LINK) OR PART # FTS92034 (26" LINK)

INSTRUCTIONS:

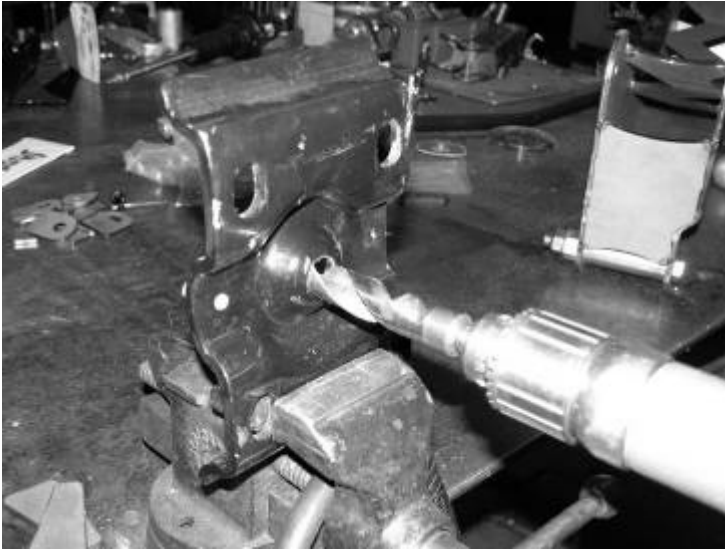
1. Disconnect the negative terminal on the battery. Jack up the rear end of the vehicle and support the frame rails with jack stands. Supporting the rear differential remove and discard the rear shocks and u-bolts. Lower the axle down slowly. Use care not to over extend the brake hose. **NEVER WORK UNDER AN UNSUPPORTED VEHICLE!**
2. Locate the E-Brake Cable mount on the driver side spring pack perch. Remove the bolt attaching it to the perch and save the hardware
3. Clamp the leaf spring in the middle of the spring and remove the center bolt. (DO NOT REMOVE THE LEAF SPRING FROM THE TRUCK) SEE PHOTOS BELOW



4. Separate the individual leaves and install the provided FT30275 add a leaf with the new center bolt in a pyramid pattern smallest on the bottom graduating to the longest on top. The factory flat overload leaf should remain on the top of the pack. Locate FT30284 Leaf Spring Spacer and place on the bottom of the stack. Clamp the spacer and springs and tighten the center bolt as not to leave a gap between the springs. Cut the thread of the bolt smooth with the nut. The nut should be on the top of the leaf spring pack. SEE DRAWING AND PHOTO BELOW



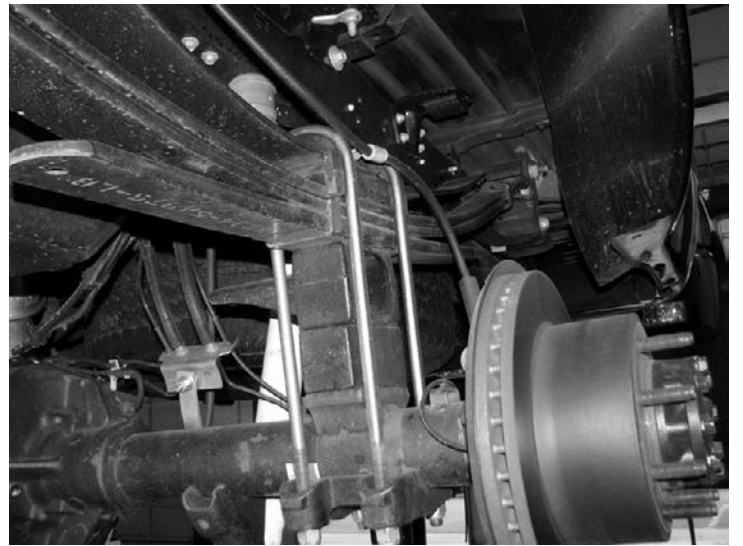
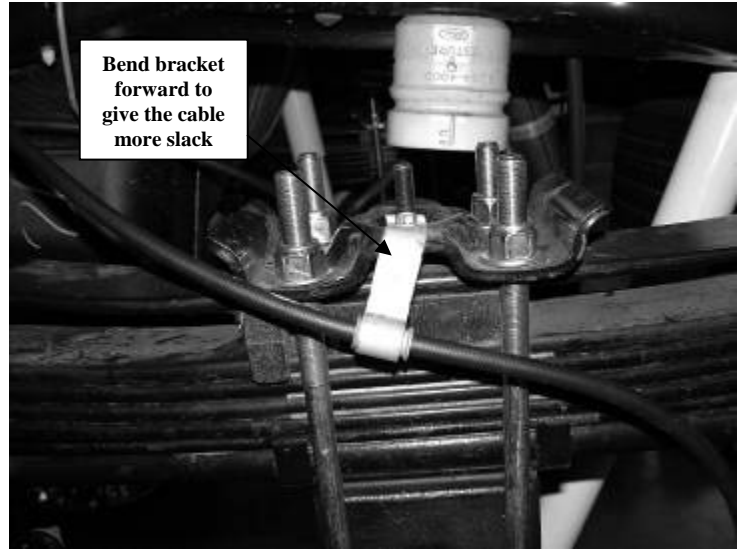
5. Locate the upper leaf spring plate. Use a drill with a 13/16" drill bit and enlarge the factory hole in the plate. This is so the new center pin nut will fit inside the plate. SEE PHOTO ON NEXT PAGE



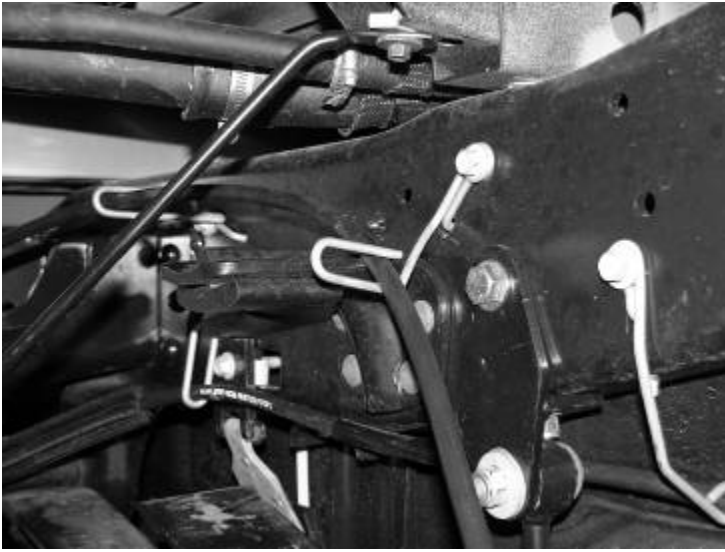
6. Locate and install the rear lift blocks, the factory block will be positioned on top of the new Fabtech block, with the short center pin of both blocks facing down, to the axle. The short end of the blocks should face to the front of the vehicle. Using the supplied u-bolts, nuts, and washers align axle, lift blocks, and springs and torque to U-Bolts to 180 ft-lbs. SEE PHOTO BELOW



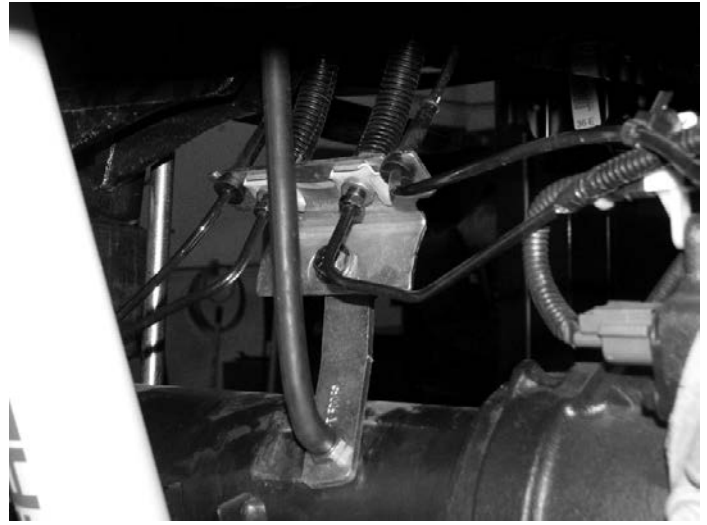
7. Install Fabtech shock part number FTS7266 Performance Shocks or FTS81005 Dirt Logic Shocks (not included) with the factory hardware and torque bolts to 65lbs.
8. Rotate the E-Brake cable bracket so that it positions the cable below the spring plate and attach to the plate with the factory hardware. Once tightened, bend the bracket forward towards the front of the truck. Locate the upper E-brake cable bracket on the frame and bend it outward / down to give the cable some more slack. SEE PHOTOS IN NEXT COLUMN



2011 configuration shown above



9. Install FTS419 Shim Kit per the instructions in the FTS419 box.
10. **2011 models only** .Locate the factory brake line mount on the driver side of the axle. Remove the vent line from the bolt and remove bolt, save hardware. Locate the supplied brake line bracket FT30059 in front box kit; attach the side with the sleeve to the axle using the factory hardware. Using the supplied 3/8" x 2" bolt, nut, and washer attach the brake line to the other end. Reattach vent line. SEE NEXT PHOTO.



11. Recheck all bolts for proper torque. Recheck brake hoses and lines for proper clearances.
12. Install tires and wheels and torque lug nuts to wheel manufacturer's specifications. Turn front tires left to right and check for appropriate tire clearance. **Note-** Some oversized tires may require trimming of the front bumper & valance.
13. Check front-end alignment and set to factory specifications. Readjust headlights.
14. Check the front-end alignment and set to the factory specifications.

