



INSTALLATION INSTRUCTIONS

FTS24183		3" TRAIL BOX KIT
1	FT50294	JK PITMAN ARM
2	FT50261BK	FRONT SWAY BAR END LINK
1	FT50533	HARDWARE SUBASSEMBLY
2	FT50492	FRONT BUMP STOP SPACER
2	FT50401BK	REAR BUMP STOP SPACER
1	FT50368	FRONT TRACK BAR BRACKET WELD ON
1	FT50296BK	REAR TRACK BAR BRACKET

FT50533		HARDWARE SUBASSEMBLY
1	FT157	SLEEVE 1.000 X .563 X 1.570
1	FT50048	SWAY BAR END LINK BUSHINGS (4 PACK)
1	FT50089	SWAY BAR END LINK SLEEVES (4 PACK)
2	FT50060	FRONT BUMP STOP NUT TAB
1	FT167	SLEEVE .875 X .563 X 1.344
1	FT50403	HARDWARE KIT
4	FT50295	BRAKE LINE DROP BRACKET
1	FT50298	E-BRAKE BRACKET
1	FT24183i	INSTRUCTIONS
1	FTLUBE	URETHANE LUBE PACKET
1	FTAS12	STICKER FT BLUE 10X4
1	FTAS16	DRIVER WARNING DECAL
1	FTREGCARD	REGISTRATION CARD

FT50403 - HARDWARE KIT		LOCATION
2	9/16-12 X 3 HEX BOLT G8 ZC	TRACK BAR
2	C-LOCK NUT 9/16"-12 CLEAR ZINC	
4	9/16 SAE WASHER G8 ZINC	
2	1/2-13 X 3-1/2 HEX BOLT G8 ZINC	FRONT BUMP STOP
2	1/2-13 X 2-3/4 HEX BOLT G8 ZINC	SWAY BAR FRT/REAR
2	1/2-20 C-LOCK NUT ZINC	
4	1/2 SAE WASHER G8 ZINC	
3	3/8-16 X 1 HEX BOLT G8 ZINC	
3	3/8-16 C-LOCK NUT ZINC	
6	3/8 SAE WASHER G8 ZINC	
4	5/16-18 X 1 HEX BOLT G8 ZINC	REAR BUMP STOP
4	5/16-18 C-LOCK NUT ZINC	
8	5/16 SAE WASHER G8 ZINC	
8	1/4-20 X 1" HEX BOLT G5 ZINC	BRAKE LINES
8	1/4-20 C-LOCK NUT ZINC	
16	1/4 SAE WASHER G5 ZINC	
1	THREAD LOCKING COMPOUND	

2007-17 JEEP WRANGLER (JK) 3" TRAIL BOX KIT

FT24183i



- TOOL LIST -

Required Tools (Not Included)

- Basic Hand Tools
- Floor Jack
- Jack Stands
- Torque Wrench
- Drill w/ assorted drill bits
- Welder
- Assorted Metric and S.A.E sockets

NOTE: REFER TO OPTIONAL KIT BOX INSTRUCTIONS PRIOR TO INSTALLATION.

- PRE-INSTALLATION NOTES -

READ THIS BEFORE YOU BEGIN INSTALLATION -

Check all parts to the parts list above before beginning installation.

Read all instructions thoroughly from start to finish before beginning the installation. If these instructions are not properly followed severe frame, driveline and / or suspension damage may occur.

Check your local city and state laws prior to the installation of this system for legality. Do not install if not legal in your area.

Prior to the installation of this suspension system perform a front end alignment and record. Do not install this system if the vehicle alignment is not within factory specifications. Check for frame and suspension damage prior to installation.

The installation of this suspension system should be performed by two professional mechanics.

This suspension must be installed with Fabtech shock absorbers.

Use the provided thread locking compound on all hardware.

WARNING- Installation of this system will alter the center of gravity of the vehicle and may increase roll over as compared to stock.

Vehicles that receive oversized tires should check ball joints, uniballs, tie rods ends, pitman arm and idler arm every 2500-5000 miles for wear and replace as needed.

Verify differential fluid is at manufactures recommended level prior to kit installation. Installation of the kit will reposition the differential and the fill plug hole may be in a different position. (For example, if the manufacture recommends 3 quarts of fluid, make sure the diff has 3 quarts of fluid). Check your specific manual for correct amount of fluid.

Fabtech replacement driveshafts are required with this system. Due to the different shafts for the 2-door and 4-door models, the driveshafts are sold separately. See chart below for proper driveshafts for your model of Jeep.

FTS94057	2007-15 Front Driveshaft 2/4 Door
FTS94051	2007-11 Rear Driveshaft 2 Door Only
FTS94052	2007-11 Rear Driveshaft 4 Door Only
FTS94058	2012 - UP Rear Driveshaft 2 Door Only
FTS94059	2012 - UP Rear Driveshaft 4 Door Only

- INSTRUCTIONS -

FRONT SUSPENSION

NOTE: REFER TO OPTIONAL KIT BOX INSTRUCTIONS PRIOR TO INSTALLATION.

1. Disconnect the negative terminal on the battery. With the vehicle on level ground, set the emergency brake and block the rear tires. Jack up the front end of the truck and support the frame rails with jack stands. **NEVER WORK UNDER AN UNSUPPORTED VEHICLE!** Remove the front tires. Support the front axle. Do not allow to hang freely. Refer to coil spring instructions for disassembly of end links, coil springs and other components.
2. Working from the driver side of the truck, unbolt the front brake line bracket from the frame and save the hardware. Remove the ABS sensor wire from the C-Clips on the front knuckle. Remove and discard the sway bar end link, save the hardware. On Rubicon models only: Unplug the front diff locker harness from the axle.
3. Remove the front shock, Remove the factory coil spring and discard, you will need to allow the front axle to hang freely to remove the coil spring. Do not remove the factory upper coil isolator. Repeat on passenger side.
4. Use a pitman arm puller and remove the stock pitman arm. Discard the arm and save the nut and washer. Locate the FT50294 pitman arm and install in the same position as the stock one was with the factory hardware. **NOTE: Use thread locker.** Torque to 185 LBS **SEE FIGURE 1**



FIGURE 1 - STEP 4

5. With the Track Bar removed from the Jeep, remove any and all paint, dirt, or debris from the axle housing where the new bracket is to be installed. The inside front corner of the coil spring mount will need to be cut / trimmed. From the front of the mount, cut 1 1/4" back and 3/4" in and down to the axle (This is just a starting point. Each vehicle will need to be trimmed to fit due to variances from Jeep to Jeep). **SEE FIGURES 2-3**



FIGURE 2 - STEP 5



FIGURE 3 - STEP 5

6. Locate FT50368 Trac Bar Bracket, supplied 9/16" bolt, washers, & nut, and FT167 Track Bar Sleeve. Place a 9/16" flat washer on the outside of the bolt and put it through the new bracket and put another 9/16" flat washer on the bolt. Position the new bracket with the bolt and washers onto the top of the axle and track bar mount. Weld the gusset as shown in the photos. **SEE FIGURES**



FIGURE 4 - STEP 6

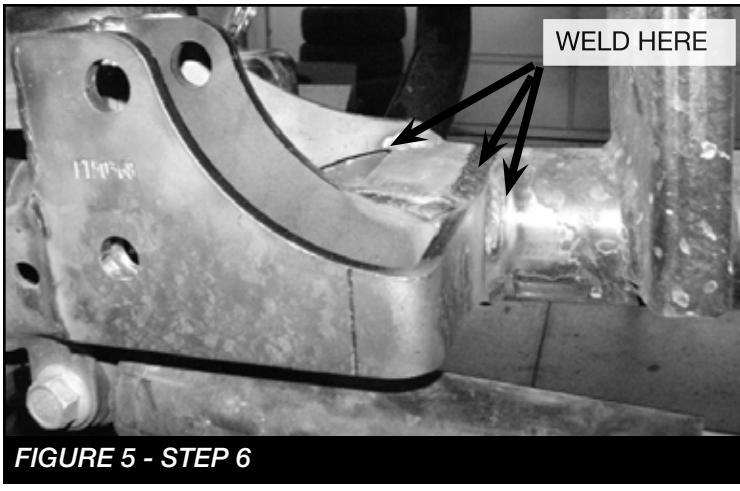


FIGURE 5 - STEP 6

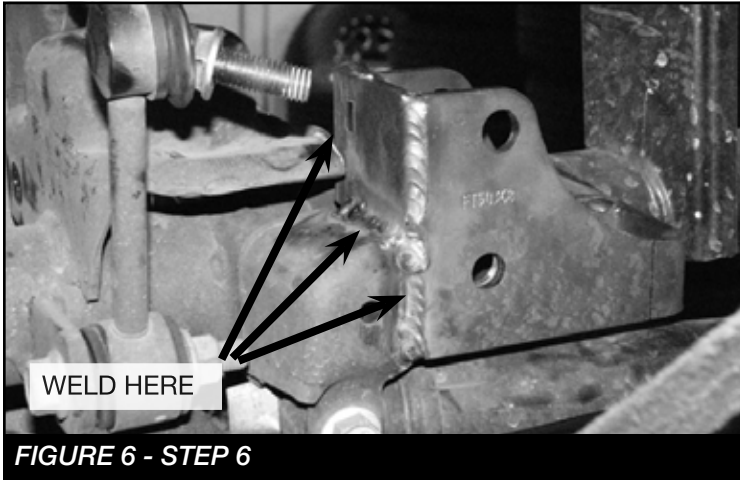


FIGURE 6 - STEP 6

4-6

7. Once the bracket has completely cooled, paint all bare

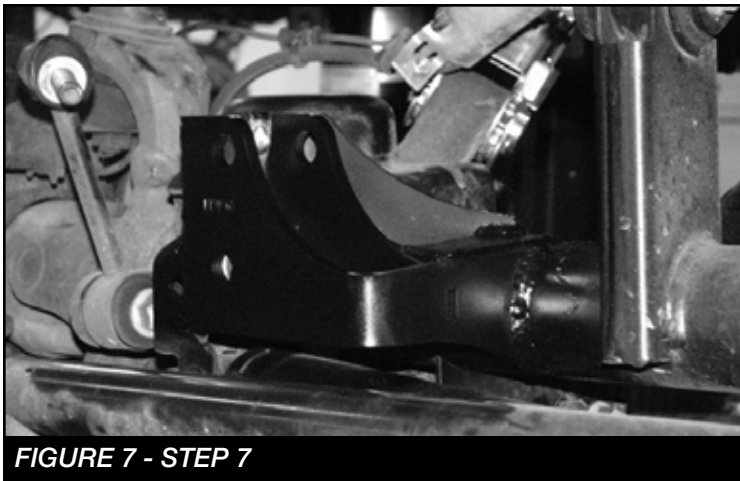


FIGURE 7 - STEP 7

metal areas. **SEE FIGURE 7**

8. Place the new FT50492 (Front bumpstop) onto the factory

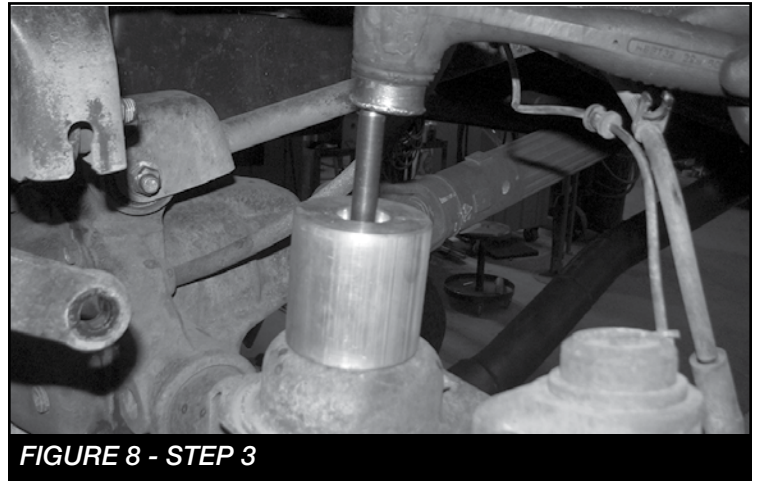


FIGURE 8 - STEP 3

bumpstop pad. Using a center punch mark for drilling. **SEE FIGURE 8**



FIGURE 9 - STEP 9

9. Drill out the bumpstop pad to 1/2" **SEE FIGURE 9**

10. Repeat steps 8-9 on passenger side.

11. Install the new coils and bumpstops together using the

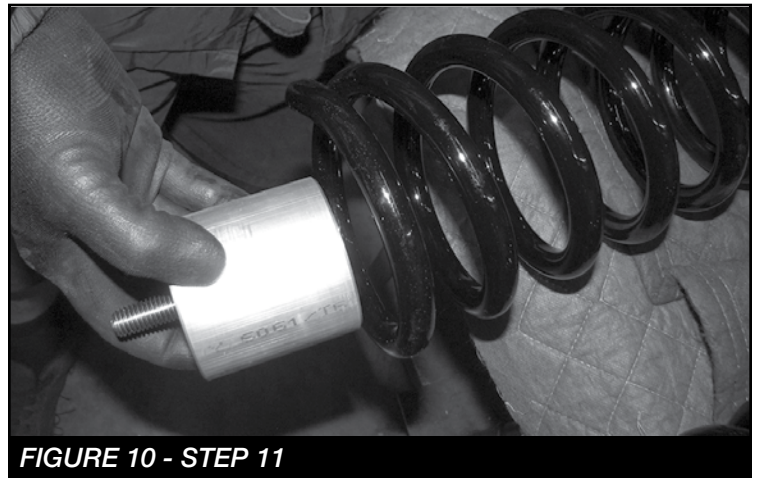


FIGURE 10 - STEP 11

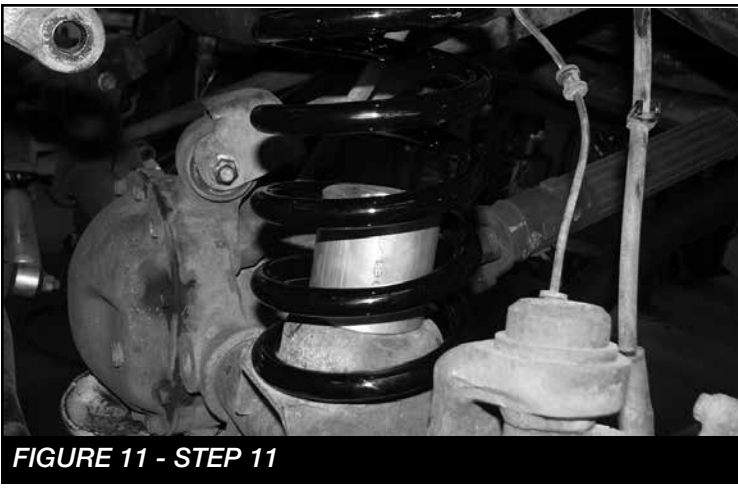


FIGURE 11 - STEP 11



FIGURE 12 - STEP 11

supplied 1/2-13 X 3-1/2" bolts and FT50060 (Nut Tab).
SEE FIGURES 10-12 Torque to 127 ft-lbs

12. Locate and install the front shocks supplied in your kit using the supplied bushings and sleeves. Install using the factory hardware.
13. Install the bushings and sleeve into the new Fabtech sway bar endlinks. Install using the supplied 1/2-20 X 2-3/4"



FIGURE 13 - STEP 13

bolt and hardware for the upper mount and the factory hardware for the lower mount. Torque to 127 ft-lbs **SEE FIGURE 13**

14. Install the track bar and torque hardware to 179 ft-lbs. Re-attach the draglink to the pitman arm and torque to 77 ft-lbs.



FIGURE 14 - STEP 15

15. Install FT50295 (Brake Line Drop Bracket) using the factory and supplied 1/4" hardware. Torque to 14 ft-lbs. **SEE FIGURE 14**

REAR SUSPENSION

16. Jack up the rear end of the vehicle and support the frame rails just in front of the rear bumper with jack stands. **NEVER WORK UNDER AN UNSUPPORTED VEHICLE!** Remove the rear tires. Support the rear axle. Do not allow to hang freely. Remove and discard the factory shocks. Disconnect the rear sway bar end links. Disconnect the brake lines from the frame and save hardware. Remove the (2) nuts attaching the factory E-brake cable from the body and save.
17. Remove and discard the factory coil springs and save the rubber isolators for re-installation.
18. With the rear axle supported. Disconnect the rear Track Bar from the axle.
19. Locate FT50296BK (Rear Track Bar Bracket), position it onto the top of the axle and track bar mount. Use the factory bolt to align the new bracket to the original mount. Use a punch and mark the factory mount through the two holes in the new bracket. Use a drill with a 3/8" bit and drill the two new holes. Locate and install the supplied 3/8" hardware Torque to 52 ft-lbs. Reinstall the factory track bar bolt and FT157 sleeve. Torque to 160 ft-lbs **SEE FIGURES 15-18**

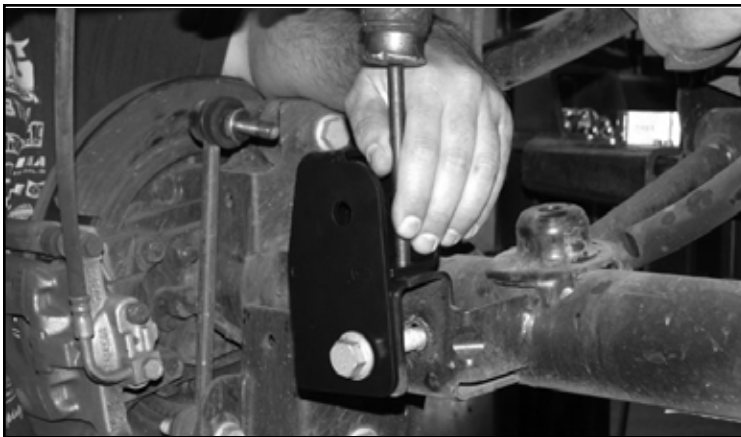


FIGURE 15 - STEP 19

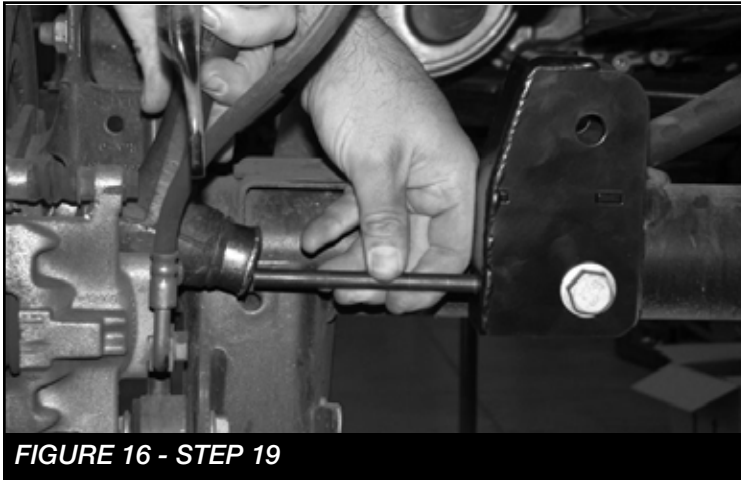


FIGURE 16 - STEP 19

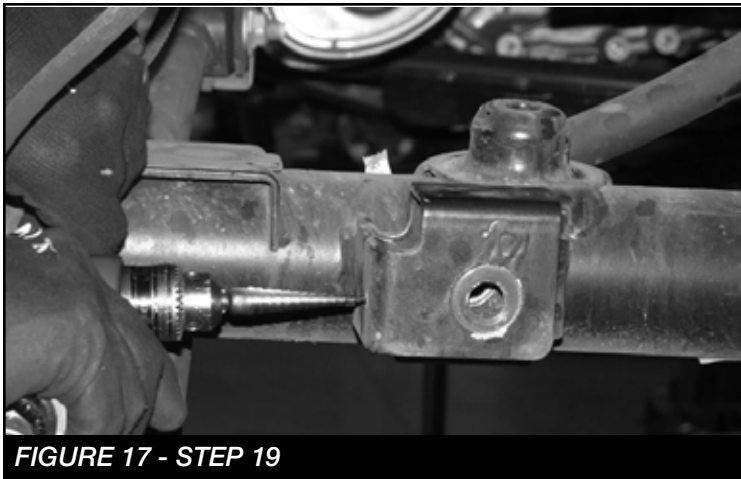


FIGURE 17 - STEP 19

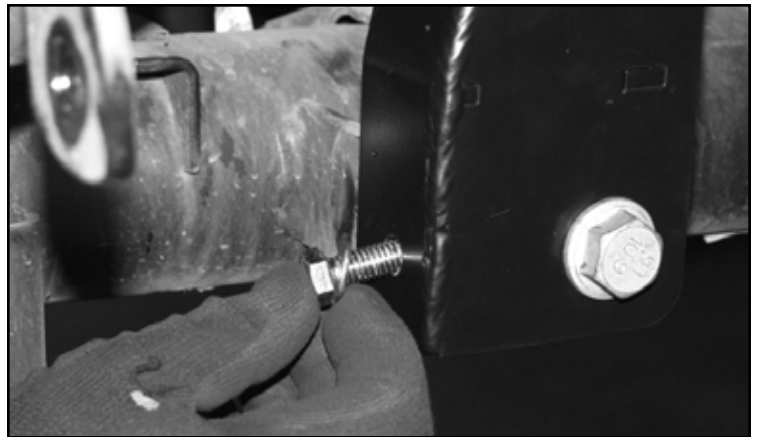


FIGURE 18 - STEP 19

20. Reinstall the track bar using the supplied 9/16-12 X 3" bolt, FT157 sleeve and hardware.

21. Locate FT50401BK Rear Bumpstop Spacer. Position the spacer onto the factory bumpstop pad on the axle and attach with the supplied 5/16" x 1" bolts and hardware. **SEE FIGURE 19**

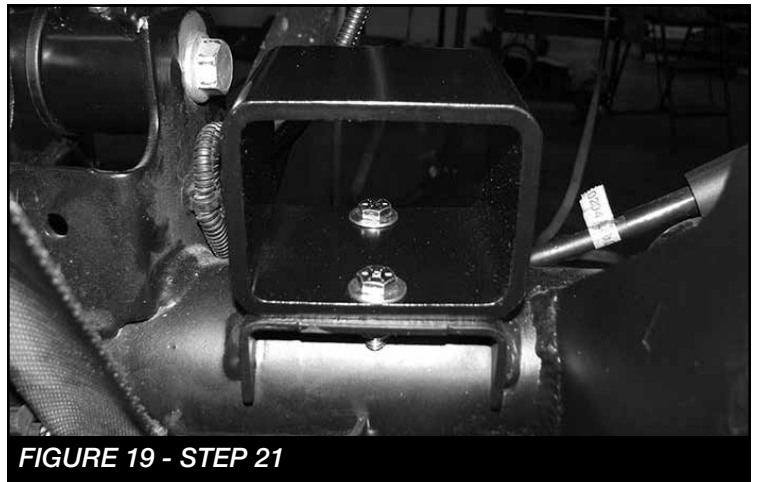


FIGURE 19 - STEP 21

22. Locate FT50298 E-Brake Bracket and supplied 1/4" hardware. Position the bracket to the factory mounting position and attach with the factory hardware. Attach the factory bracket to the new Fabtech bracket with the 1/4" hardware. Torque to 10 lbs. **SEE FIGURE 20**

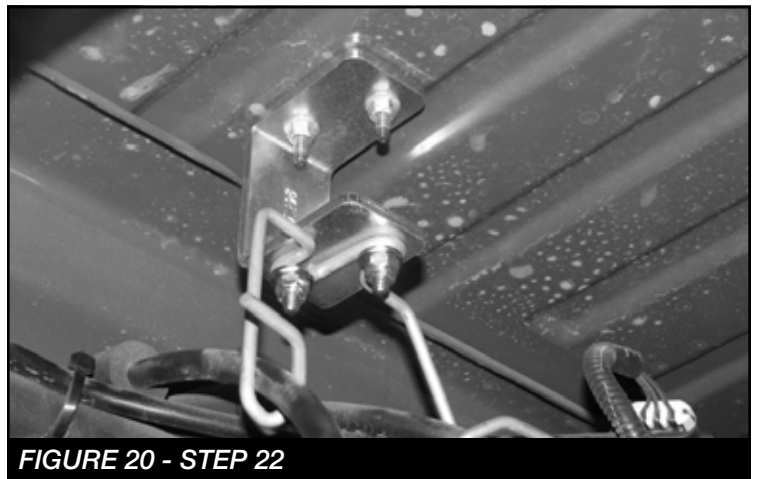


FIGURE 20 - STEP 22

23. Locate & install new Fabtech rear coil spring with the factory isolators on the top into the upper mount first, then onto the factory coil perch on the axle. (make sure upper isolator is fully seated into the upper pocket / mount). **SEE FIGURE 21**



FIGURE 21 - STEP 23

24. Install the supplied Fabtech shock using the factory upper hardware to mount the bar bin and the supplied 1/2" x 2 1/2" bolt, large USS washers, and hardware. (insert one large USS washer per side inside the shock mount with the shock) Torque the upper hardware to **60 ft. lbs and the lower to **127lbs. **SEE FIGURE 22**



FIGURE 22 - STEP 24

25. Install FT50295 (Brake Line Drop Bracket) using the factory and supplied 1/4" hardware. Torque to 14 ft-lbs. **SEE FIGURE 23**



FIGURE 23 - STEP 25

26. Install tires and wheels and torque lug nuts to wheel manufacturer's specifications. Turn front tires left to right and check for appropriate tire clearance. **Note - Some oversized tires may require trimming of the front bumper & valance.**
27. Check front end alignment and set to factory specifications. Readjust headlights.
28. Recheck all bolts for proper torque.
29. Recheck brake hoses, ABS wires and suspension parts for proper tire clearance while turning tires fully left to right.
30. Check the fluid in the front and rear differential and fill if needed with factory specification differential oil. **Note - some differentials may expel fluid after filling and driving. This can be normal in resetting the fluid level with the new position of the differential/s.**
31. Install Driver Warning Decal. Complete product registration card and mail to Fabtech in order to receive future safety and technical bulletins on this suspension.

Vehicles that will receive oversized tires should check ball joints, uniballs and all steering components every 2500-5000 miles for wear and replace as required.

RE-TORQUE ALL NUTS, BOLTS AND LUGS AFTER 50 MILES AND PERIODICALLY THEREAFTER.