



Installation Instructions
717966
2018-22 JEEP WRANGLER JL
3.6L ENGINE

OVERVIEW:

1. Take a moment to read and understand these instructions before installing your Flowmaster performance system.

NOTE: Please inventory all parts now before continuing and if necessary, report any missing items to our tech line. This will avoid potentially stranding your vehicle until any missing replacement parts arrive.

ITM #	PART #	DESCRIPTION	QTY.
1	26823M	Inlet Pipe	1
2	70008-563	Muffler Assembly	1
N/A	PK1055	Hardware Package includes:	1
3	MC300BS	3" Stainless Band Clamp	1
4	HW503	½" Hanger Keeper	1

REMOVE STOCK EXHAUST SYSTEM:

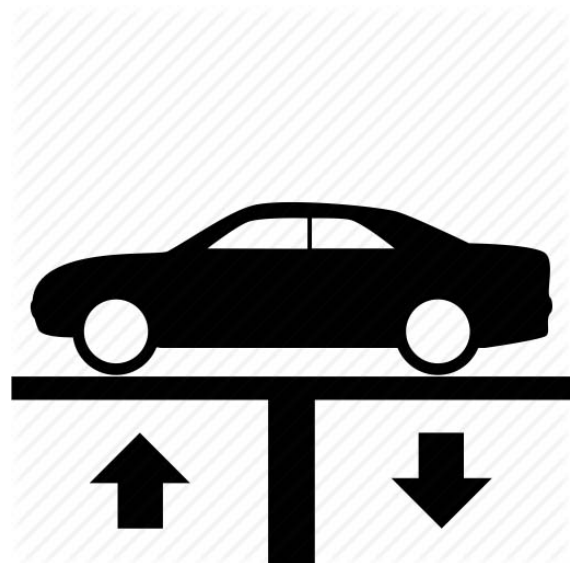
2. Raise vehicle up on a hoist or rack to working height. If you don't have access to a hoist or rack, support vehicle with jack stands.

WARNING:

Avoid serious burns! Allow your vehicle time to cool completely before touching any factory engine components.

To ease preparation and installation of your new kit:

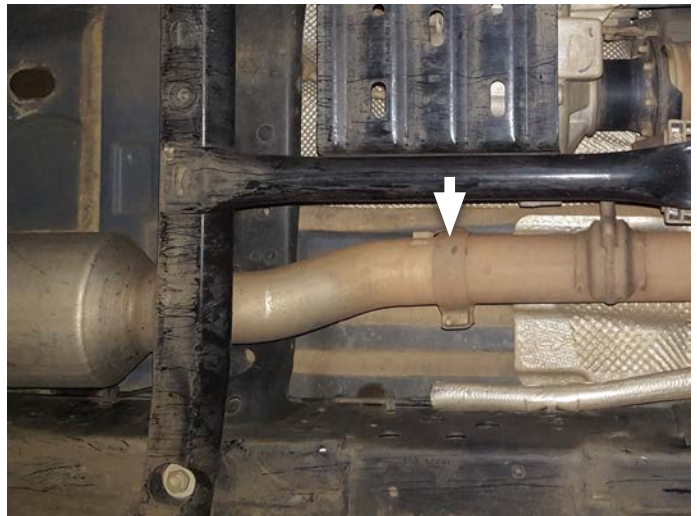
- Apply penetrating lubricant to mounts, bolts and clamps before you remove them.
- Use stands as necessary to support parts as you detach them from your vehicle and again as you install new parts.



- Support muffler then unbolt and retain isolator mounts. Loosen clamp and remove muffler section from vehicle.



- Loosen ball clamp from resonator inlet, disassemble hanger wires from isolators and remove resonator section from vehicle. Release tab to remove clamp from pipe and retain it for later use.



INSTALL FLOWMASTER EXHAUST SYSTEM:

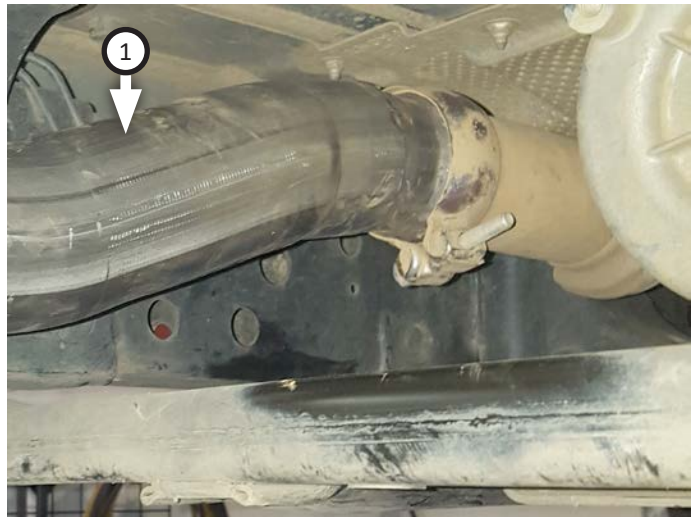
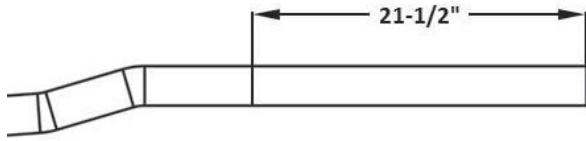
- Remove nuts from stock and Flowmaster clamps, apply anti-seize compound to bolts and re-install nuts.

NOTE: The image in this step is intended for illustrative purposes only and may or may not accurately reflect components included in your kit.

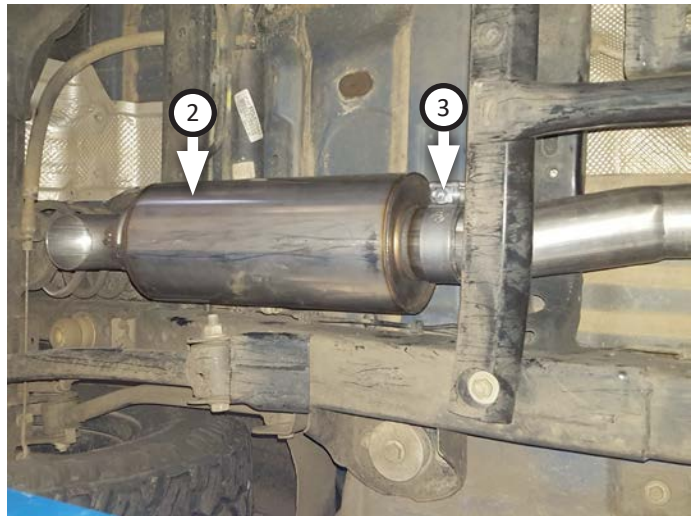


NOTE: For 2-door models only, trim 21½" from inlet pipe.

6. Place factory ball clamp (removed step 4) onto **inlet pipe (1)** then connect it to catalytic converter. Orient pipe exactly as shown and tighten clamp.



7. Place **clamp (3)** onto **muffler (2)** then connect it to inlet pipe. Tighten clamp just enough to allow for adjustment.
8. Adjust exhaust components for fit; maintaining ½" clearance and compensating for suspension, travel and vibration, then tighten all clamps. Finally, fit **hanger keeper (4)** onto hanger.
9. Recommended: Secure slip-fit connections with a 1-inch tack weld then spray high-temp paint over each weld to prevent rust and premature corrosion.



Congratulations, the installation of your FLOWMASTER performance exhaust system is now complete!





Installation Diagram
717966
2018-22 JEEP WRANGLER JL
3.6L ENGINE

