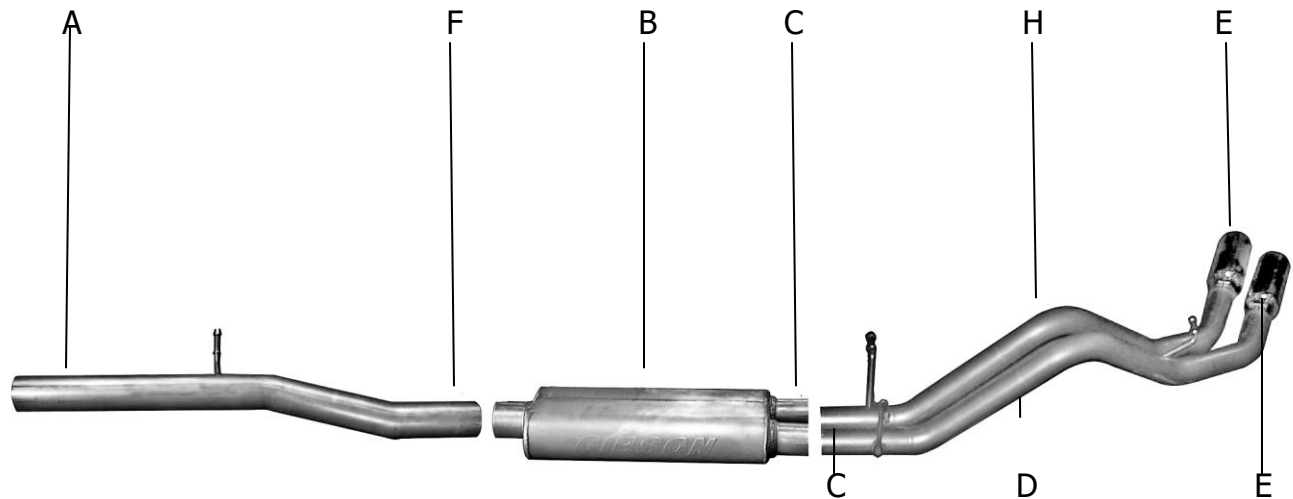




Installation Instructions

Cat-Back Dual Sport Exhaust
 GMC YUKON DENALI 1500 AWD 6.2L
 Cadillac Escalade 6.2L

Part #65679B



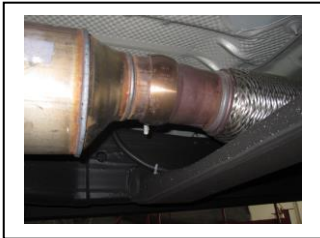
ITEM	PART	QUANTITY	DESCRIPTION
A	999700886S	1	3.5" HEADPIPE WITH WELDED HANGER AND FLARE
B	11238S	1	CFT MUFFLER
C	999700862S	1	2.25" PASSENGER SIDE TAILPIPE WITH WELDED HANGER AND TAB
D	999700863S	1	2.25" DRIVERS SIDE TAILPIPE WITH WELDED HANGER AND TAB
E	500639-B	2	BLACK CERAMIC TIP
F	4170	1	3.5" CLAMP
G	5756	2	2.25" CLAMP
H	BO-906	1	BOLT KIT FOR TAILPIPES

Installation Instructions #65679B

When installing this exhaust system make sure to use proper safety precautions. Use jack stands when working under the vehicle, set parking brake, block tires and use safety glasses and gloves. Allow exhaust to cool before attempting installation. Severe injury or burns could occur if safety measures are not taken.

SUGGESTED TOOLS: 1/2", 9/16", 15mm wrenches & sockets, WD-40, hacksaw, jack stands

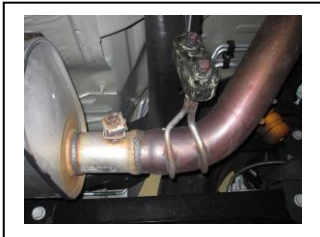
1. Disconnect the negative battery cable before removal of OEM exhaust. This will allow the computer to reset and recognize the new exhaust. Lay out the exhaust on the floor so it looks like the drawing and compare parts with manual.



2. To remove your stock exhaust cut your tailpipe just behind the muffler use wd-40 to aid in the removal of the rubber grommets you will re use them.



6. Next install passenger side tailpipe #c into muffler 1.5"to rubber grommet use clamp #g to secure together do not tighten.



3. Remove the rest of your stock exhaust from the clamp located in front of your stock muffler you will re use it.



7. Next install driver side overaxle tailpipe #d into muffler. Insert welded hanger use clamp #g to secure bolt tailpipes together with bolt kit provided.



4. Install head pipe #A onto factory pipe re-use your factory clamp to secure insert welded hanger into rubber grommet. Do not tighten



8. Install stainless steel tip. Clamp down. When you have everything in place, firmly tighten all bolts and clamps down securely. Use stainless steel or aluminum cleaner to polish tips. Inspect all fasteners after 25-50 miles of operation and re-tighten as necessary. You may need to cut your stock tail pipe back to get your tip to fit correctly.



5. Install muffler #B onto head pipe #A 1 1/2"-2" with the louvers facing towards the converter. Use a jack stand to support the muffler. Use clamp #f to secure the muffler to the head pipe. Do not tighten. Muffler inlet is looking into the louvers.

GIBSON EXHAUST systems are designed on a factory stock vehicle. Any aftermarket products installed could increase the sound levels of the exhaust. **Make sure there is a 1" clearance from ALL rubber brake lines, shock boots, lines, tires, etc. to prevent heat related damage or fire.**

View other [license performance exhaust systems](#) made by Gibson on our website.