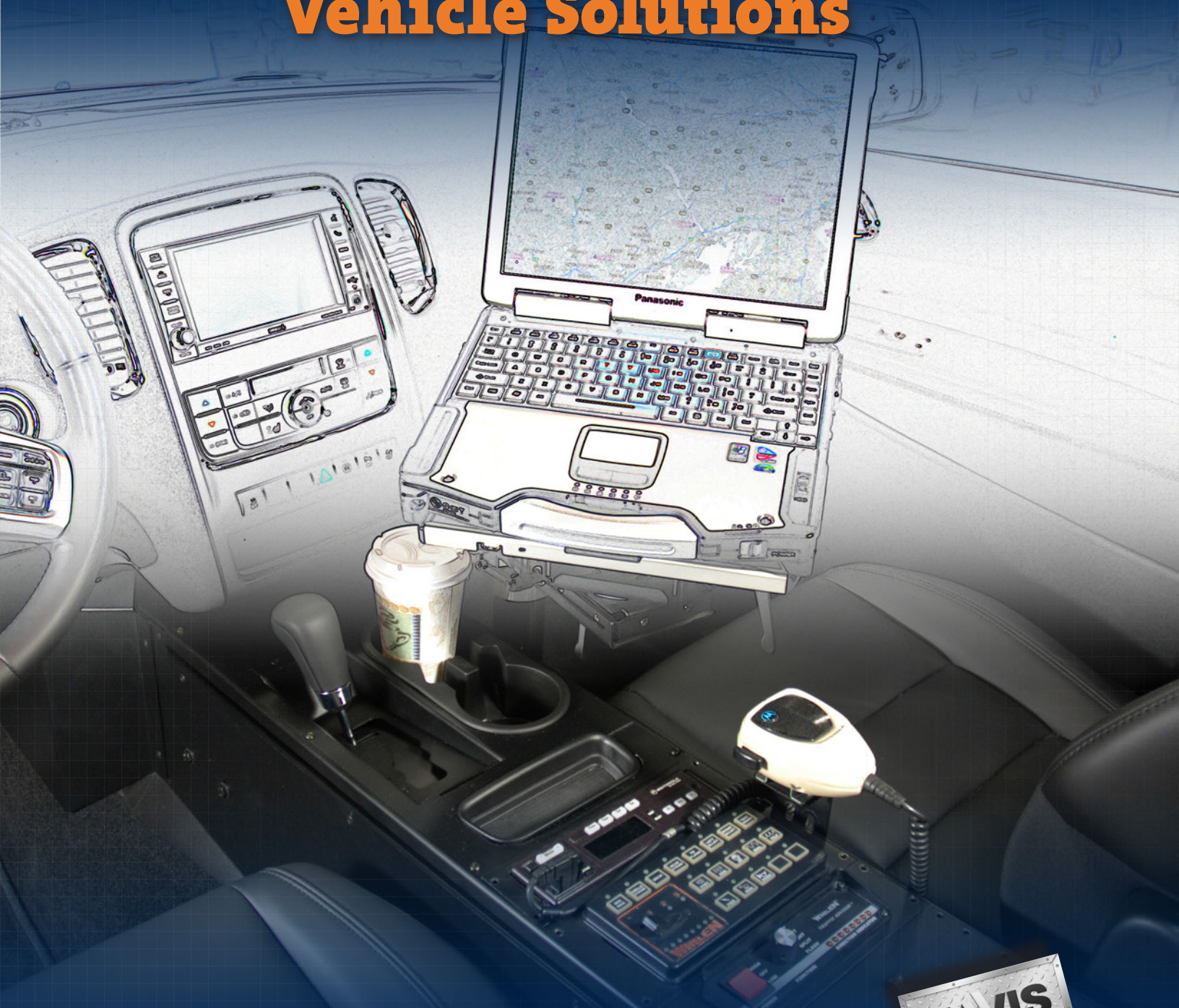


DODGE

Vehicle Solutions



HAVIS
Productivity in motion

HAVIS
EQUIPPED

Dodge Vehicle Solutions



Charger (25")

Vehicle Specific Consoles

Our Vehicle Specific Consoles are designed to make installation easier by utilizing existing bolt locations, which removes the need to drill holes.



Durango



Charger (24")



Ram Pick-up



Charger (17")

Heavy Duty Mounting Systems

Havis passenger side mounts are rugged, professional grade computer mounts that combine the perfect balance of strength, safety, and ultrasmooth operation.



Ram Pick Up



Charger



Caravan



Dakota Pick-up



Ram Pick-up



Durango

Dash Monitor Mounts

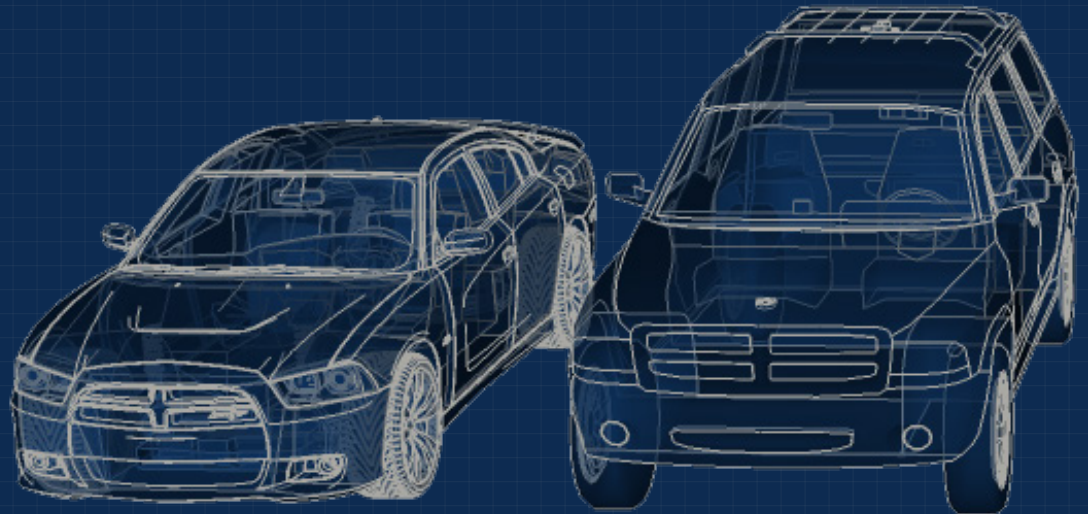
The Havis Monitor Mount System utilizes interchangeable parts to mount your monitor and keyboard to any vehicle, without permanent modification.



Durango



Charger





Charger (slide-out)

Trunk Mounted Storage

With the right trunk mount, you can optimize storage space and provide a clean, safe, and secure mounting surface for expensive radio and communications equipment.



Trunk Side Mount (Driver Side)



Trunk Side Mount (Passenger Side)



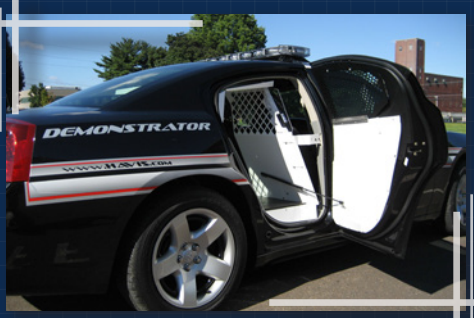
Fold Down Trunk Tray



Universal Storage Box (Mounts to any flat surface)

K9 Transportation Units

Havis K9 units feature rounded corners and a heavy-duty white powder coat finish, which allows for improved canine entry and exit, as well as easy access for cleaning.



Charger



Durango



Charger



Optional Window Fan

Prisoner Transport Units

Offered in four different lengths, the units allow you to transport a combination of six to twelve people in one to four compartments and still offers room for storage.

Note: Kwik-Kits will be available for 2014 Ram PROMASTER Cargo Van



Sprinter



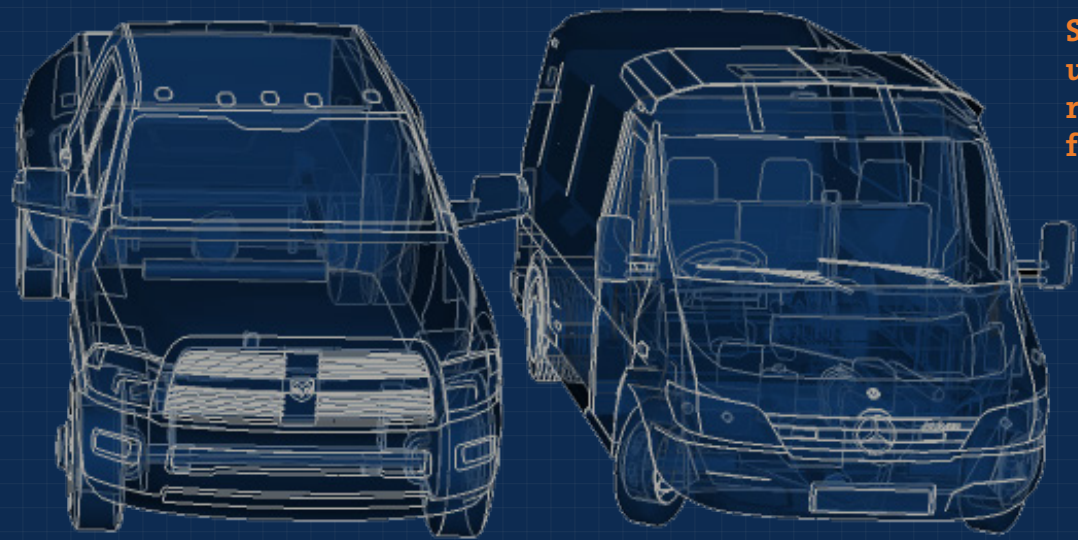
Different Lengths



Side Compartments



Fold Down Steps



See the back page for universal products and recommended solutions for all Dodge Vehicles



Universal Products



Laptop and Tablet Docking Stations/Cradles

Havis' docking stations are available for Panasonic, Dell, General Dynamics-Itronix and more. The Universal Laptop and Tablet Mount allows you to mount any brand of laptop computer or tablet without sacrificing crash test standards and durability.

Mobile Office Accessories

For in-vehicle mobile equipment, Havis offers innovative accessories such as the Rugged Hub II - a USB/Ethernet Communications Hub. This groundbreaking product makes adding peripherals to your mobile workspace safe, and easy. Other mounting accessories such as printer mounts and card reader brackets allow you to effectively run customer information & print receipts directly from your vehicle.



Power Management Solutions

Auto Shut-Off Timer: ChargeGuard® auto shut-off timers safeguard expensive communications devices and computers with intelligent circuitry protection, ultimately ensuring you will never have a dead battery again.

Idle Management: IdleRight2® is the next generation of Havis Idle Reduction systems, saving you fuel and maintenance costs by reducing idle time while performing mission-critical tasks in your mobile workspace.

Havis can support many vehicles with our quality products that are designed specifically for that vehicle type. Combine those with the hundreds of universally mounted products Havis manufactures, and you have the largest product portfolio available. You can create your mobile office the way *you* want and the way *you* need it.

All of Havis' products are designed to seamlessly work with each other to complete your solution. Contact a Havis representative to assist in configuring our products into a "build your own solution" that meets all of your needs.

The following chart represents the recommended solutions for newer vehicle models.

	Application Years	Radios and Equipment (Console)	Laptop Mount (Passenger Side Mount)	Computer Display (Dash Mount)	Radio, CPU and Power Storage (Trunk Tray)	K-9 Transport Unit	Prisoner Transport Insert (Kwik-Kit)
Dodge							
Caravan / Town & Country	2011-2013	Call*	PKG-PSM-246	N/A	N/A	N/A	N/A
Charger (Police Package)	2011-2013	C-VS-2400-CHGR-2 C-VS-2500-CHGR-1 C-VS-0809-CHGR-1	PKG-PSM-244	C-DMM-119	C-TTB-CHGR-4 C-TSM-CHGR-P C-TSM-CHGR-D C-TFD-CHGR-1	KK-K9-D24-K	N/A
Dakota	2005-2011	N/A	PKG-PSM-220	N/A	N/A	N/A	N/A
Durango	2011-2013	C-VS-1600-DUR-1	PKG-PSM-245	C-DMM-124	N/A	KK-K9-D25-K	N/A
Journey / Avenger / Caliber	2010-2011	N/A	PKG-PSM-247	N/A	N/A	N/A	N/A
Ram Pickup	2011-2013	C-VS-0814-RAM-1	PKG-PSM-211	N/A	N/A	N/A	N/A
3500/4500/5500 Ram Cab Chassis	2007-2012	Call*	PKG-PSM-252	N/A	N/A	N/A	N/A
Sprinter Van	2007-2009	Call*	C-HDM-131	N/A	N/A	N/A	KK-S-120-06

*Products marked with "Call" indicate that while there is not a vehicle specific solution for this product, Havis does offer a solution for that vehicle type. If you have a large fleet requirement or special application, please call Havis to help build your solution.



Recommended Packages



Easy to Order and Easy to Install



Passenger Side Mounting Systems

(PKG-PSM-200 Series shown with additional options)

Console Mounting Systems

(PKG-CON-115 shown with additional options)



Passenger Side Mounting Systems

Havis has equipment mounting packages for the most popular vehicle applications. By bundling all of the necessary parts in one SKU we simplify the ordering process.

These packages work in conjunction with our Tablet & Laptop Docking Stations and Universal Cradles to create the safest and most comfortable mobile workstations in the industry.

*Packages are complete. Must order as-is. No substitutions.

Easy to order, Easy to Install.

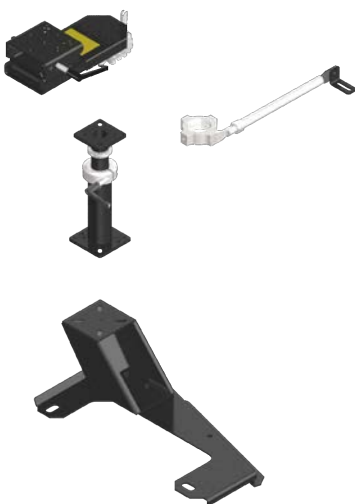
Standard Packages (PKG-PSM-100)



Standard PKG-PSM's include a vehicle specific base plate, heavy-duty pole without height adjust handle, tilt-swivel motion device, and a top offset plate.

- Vehicle Specific Mounting Bases mount to existing OEM seat bolts for easy installation
- Heavy Duty Poles without height adjustable handle include collar only to set fixed height at installation (not user height adjustable)
- Tilt/Swivel motion devices enable 180° horizontal rotation for laptops and docking stations. Used to mount keyboards, laptop mounting plates, docking stations and more to the poles
- Top offset plates allow for strong and comfortable positioning of computer equipment
- See back page for the vehicles Standard Packages are available for.

Premium Packages (PKG-PSM-200)



Premium PKG-PSM's include a vehicle specific base plate, heavy-duty pole with height adjust handle, swing arm motion device with tilt-swivel, and stability support arm.

- Vehicle Specific Mounting Bases mount to existing OEM seat bolts for easy installation
- Height adjustable poles bolt to the vehicle specific base. Precision machined parts eliminate metal-to-metal contact and allow for smooth movement during height adjustment
- Swing arms with motion adapters are ideal for computer usage from both the driver and front passenger seats. Their ruggedized design protects occupants and equipment in quick maneuvers and crash situations
- Stability support arms add upper pole support for premium top level stability and are highly recommended for all HDM applications
- See back page for the vehicles Premium Packages are available for.

Console Mounting Systems

Console Mounting System Packages (PKG-CON) include various products that create the best equipment mounting solution for your mobile office. Filler plates and equipment brackets still need to be identified when ordering.

These packages can work in conjunction with our Docking Stations and Universal Cradles to create the safest and most comfortable mobile workstations in the industry.

*Packages are complete. Must order as-is. No substitutions.

PKG-CON-111



1995-2011 Ford Crown Victoria Package includes:

- 18" Horizontal Console (C-1800)
- Vehicle Specific Mounting Bracket Kit (C-M-1)
- Internal Mount Cupholder (C-CUP2-I)
- Height Adjustable Armrest (C-ARM-101)

PKG-CON-112



1995-2011 Ford Crown Victoria Package includes:

- 8" Wide Vehicle Specific Tunnel Mount (C-TMW-CV-01)
- 12" Enclosed Heavy Duty 25° Angled Console (C-SM-1225)
- 8" Enclosed Low Profile Heavy Duty Console (C-SM-800)
- Internal Mount Cupholder (C-CUP2-I)
- Flip-up Armrest (C-ARM-104)

PKG-CON-114



2010-2013 Chevrolet Tahoe Package includes:

- 8" Wide Vehicle Specific Tunnel Mount (C-TMW-GMC-02)
- 12" Enclosed Heavy Duty 25° Angled Console (C-SM-1225)
- Dual External Cupholder (C-CUP2-E-C)
- Flip-up Armrest (C-ARM-104)

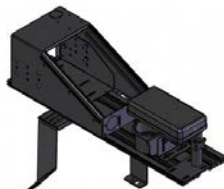
PKG-CON-116



2006-2010 Ford Explorer Package includes:

- 16" Vehicle Specific Console (C-VS-1600-EXPL)
- Height Adjustable Flip-up Armrest (C-ARM-103)

PKG-CON-121



2007-2015 Ford Expedition Package includes:

- 8" wide vehicle specific tunnel mount (C-TMW-EXPD-02)
- 12" enclosed heavy duty 25° Angled console (C-SM-1225)
- Dual External Cupholder (C-CUP2-E-C)
- Flip-up Armrest (C-ARM-104)

PKG-CON-122



2009-2013 Ford F-150 Package includes:

- 8" wide vehicle specific tunnel mount (C-TMW-F150-02)
- 12" Enclosed Heavy Duty 25° Angled Console (C-SM-1225)
- Dual External Cupholder (C-CUP2-E-C)
- Flip-up Armrest (C-ARM-104)

How to Order

Package Part Numbers

Havis has equipment mounting packages for the most popular vehicle applications. By bundling all of the necessary parts in one SKU we simplify the ordering process. Packages are complete. Must order as-is. No substitutions.

Passenger Side Mounting Systems

Make & Model	Years	Standard Part Number	Premium Part Number
Chevrolet/GMC			
Caprice	2011-2013	PKG-PSM-154	PKG-PSM-254
	2014-2015	PKG-PSM-175	PKG-PSM-275
G-Series Van	1997-2008	PKG-PSM-107	PKG-PSM-207
	1997-2015	PKG-PSM-139*	PKG-PSM-239*
Impala	2006-2013	PKG-PSM-103	PKG-PSM-203
Tahoe / Yukon	2000-2014	PKG-PSM-102	PKG-PSM-202
Trailblazer	2003-2009	PKG-PSM-125	PKG-PSM-225
DaimlerChrysler			
Caravan, Town & Country	2011-2014	PKG-PSM-146	PKG-PSM-246
Charger	2011-2014	PKG-PSM-168	PKG-PSM-268
Dakota	2005-2011	PKG-PSM-120	PKG-PSM-220
Durango	2011-2014	PKG-PSM-145	PKG-PSM-245
Ram Pick Up	2003-2014	PKG-PSM-111	PKG-PSM-211
Ford			
Crown Victoria	1995-2011	PKG-PSM-101	PKG-PSM-201
Interceptor (Sedan)	2013-2015	PKG-PSM-141	PKG-PSM-241
Interceptor (Utility)	2013-2015	PKG-PSM-153	PKG-PSM-253
E-Series Van	1997-2014	PKG-PSM-106	PKG-PSM-206

*This model mounts to the front (forward seat bolts) of the passenger seat

Make & Model	Years	Standard Part Number	Premium Part Number
Ford (continued)			
E-Series Van	1997-2014	PKG-PSM-140*	PKG-PSM-240*
Edge	2006-2010	PKG-PSM-132	PKG-PSM-232
Escape	2001-2012	PKG-PSM-123	PKG-PSM-223
	2013	PKG-PSM-162	PKG-PSM-262
Expedition	1997-2015	PKG-PSM-109	PKG-PSM-209
	2010	PKG-PSM-137	PKG-PSM-237
Explorer (Retail)	2011-2013	PKG-PSM-153	PKG-PSM-253
	2004-2014	PKG-PSM-108	PKG-PSM-208
F-150 Pick Up	2011	PKG-PSM-142	PKG-PSM-242
Focus	2011-2013	PKG-PSM-160	PKG-PSM-260
Fusion	2013-2014	PKG-PSM-163	PKG-PSM-263
Ranger	1997-2012	PKG-PSM-115	PKG-PSM-225
Taurus	2008-2009	PKG-PSM-119	PKG-PSM-219
Jeep			
Liberty	2002-2012	PKG-PSM-127	PKG-PSM-227
Nissan			
Altima	2007-2012	PKG-PSM-116	PKG-PSM-216
Toyota			
Camry	2005-2009	PKG-PSM-117	PKG-PSM-217
Prius	2004-2009	PKG-PSM-129	PKG-PSM-229

Console Mounting Systems

Make & Model	Years	Package Part Number	Console Type
Chevrolet			
Impala	2006-2013	PKG-CON-115	Vehicle Specific
Tahoe	2010 - 2013	PKG-CON-114	Horizontal
Dodge			
Charger	2008-2010	PKG-CON-113	Vehicle Specific

Make & Model	Years	Package Part Number	Console Type
Ford			
Crown Victoria	1995-2011	PKG-CON-111	Horizontal
Crown Victoria	1995-2011	PKG-CON-112	Angled
Expedition	2007-2015	PKG-CON-121	Angled
Explorer	2006-2010	PKG-CON-116	Vehicle Specific
F-150	2009-2013	PKG-CON-122	Angled

Options & Accessories

Tablet & Laptop docking, keyboards & mounts, printer & peripheral mounts, arm rests, map lights and many other accessories are available.

Look through our comprehensive collection of car mounts & chargers right away.