

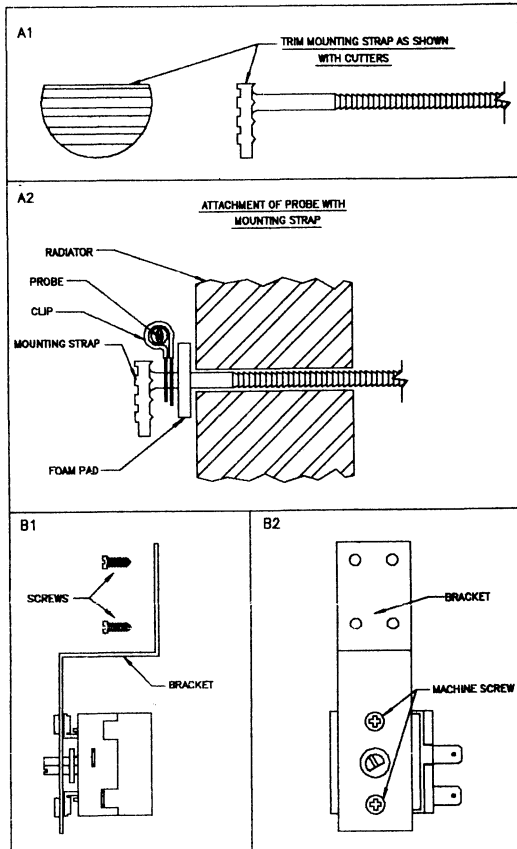
# ADJUSTABLE THERMOSTAT FOR ELECTRIC COOLING FANS

## PACKAGING LIST

- (1) THERMOSTAT WITH PROBE (2) BUTT CONNECTOR
- (1) BRACKET (2) SCREWS
- (1) 16 FT WIRE (2) MACHINE SCREWS
- (2) FEMALE WIRE CONNECTOR (1) MOUNTING STRAP & BUTTON
- (1) FOAM PAD (1) CLIP

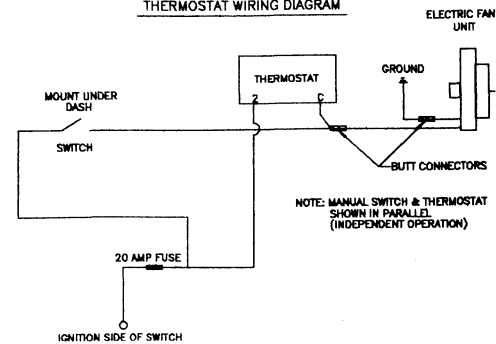
1. DETERMINE THE APPROPRIATE MOUNTING POSITION OF THE PROBE ON THE RADIATOR BEFORE INSTALLATION. INSTALL THE PROBE ON THE BACKSIDE OF THE RADIATOR TOWARD THE ENGINE. MAKE SURE ALL WIRES ARE SECURED BEFORE STARTING THE VEHICLE.
2. FOR PROPER INSTALLATION TRIM THE MOUNTING STRAP AS SHOWN IN ILLUSTRATION 'A1' WITH CUTTERS. ILLUSTRATION 'A2' SHOWS HOW THE MOUNTING STRAP WILL HOLD THE THERMOSTAT PROBE.
3. MOUNT THE THERMOSTAT ON THE BRACKET AS SHOWN IN ILLUSTRATION 'B2' USING (2) MACHINE SCREWS. POSITION THE BRACKET NEAR THE RADIATOR ALLOWING FOR THE LENGTH OF THE TEMPERATURE PROBE, AND SECURE WITH (2) SCREWS PROVIDED IN KIT SEE ILLUSTRATION 'B1' & 'B2'.
4. WIRE THERMOSTAT PER DIAGRAM.
5. START THE ENGINE AND ALLOW THE COOLANT TO WARM TO OPERATING TEMPERATURE. ADJUST THE THERMOSTAT CONTROL TO THE DESIRED SETTING BY TURNING THE CONTROL KNOB WITH A SCREWDRIVER.  
CLOCKWISE: RAISES THE TEMPERATURE AT WHICH THE THERMOSTAT ACTUATES THE ELECTRIC FAN. RANGE IS FROM 32°F TO 248°F. (HIGHER COOLANT TEMPERATURE).  
COUNTERCLOCKWISE: LOWERS THE TEMPERATURE AT WHICH THE THERMOSTAT ACTUATES THE ELECTRIC FAN. RANGE IS FROM 248°F TO 32°F. (LOWER COOLANT TEMPERATURE).

WHEN ADJUSTED PROPERLY, THE THERMOSTATICALLY CONTROLLED FAN SHOULD MAINTAIN THE ENGINE COOLANT AT OPERATING TEMPERATURE. THEREFORE THE FAN WILL NOT ACTIVATE IMMEDIATELY AFTER THE ENGINE IS STARTED WHEN COLD.



SS 12623IS DATED 08/21/97 DAYCO PRODUCTS-EAGLEMOIVE

THERMOSTAT WIRING DIAGRAM



P 12623-IS (Rev. 3/00)  
HAYDEN AUTOMOTIVE

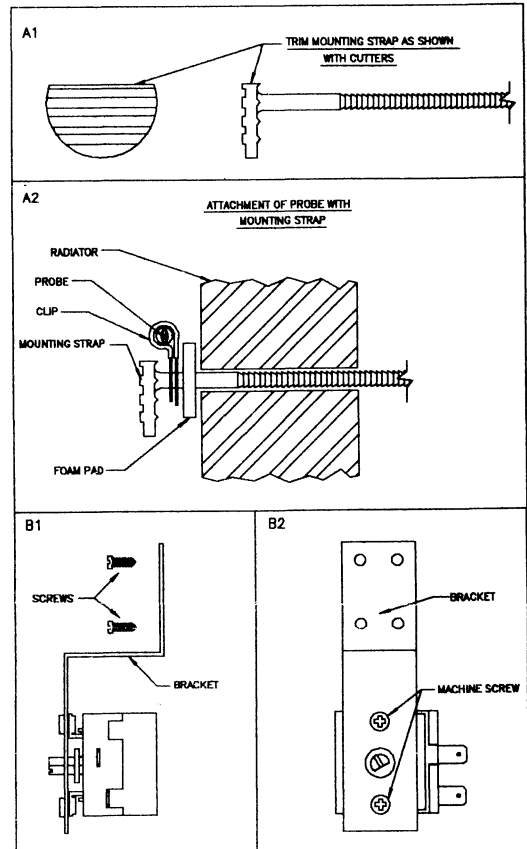
# ADJUSTABLE THERMOSTAT FOR ELECTRIC COOLING FANS

## PACKAGING LIST

- (1) THERMOSTAT WITH PROBE (2) BUTT CONNECTOR
- (1) BRACKET (2) SCREWS
- (1) 16 FT WIRE (2) MACHINE SCREWS
- (2) FEMALE WIRE CONNECTOR (1) MOUNTING STRAP & BUTTON
- (1) FOAM PAD (1) CLIP

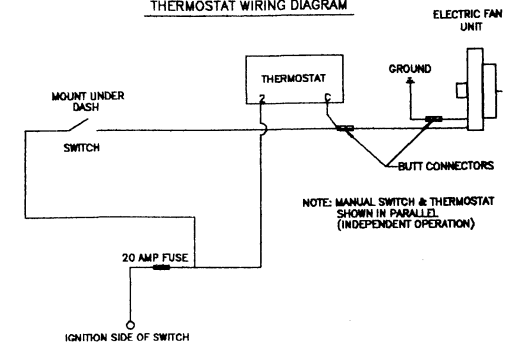
1. DETERMINE THE APPROPRIATE MOUNTING POSITION OF THE PROBE ON THE RADIATOR BEFORE INSTALLATION. INSTALL THE PROBE ON THE BACKSIDE OF THE RADIATOR TOWARD THE ENGINE. MAKE SURE ALL WIRES ARE SECURED BEFORE STARTING THE VEHICLE.
2. FOR PROPER INSTALLATION TRIM THE MOUNTING STRAP AS SHOWN IN ILLUSTRATION 'A1' WITH CUTTERS. ILLUSTRATION 'A2' SHOWS HOW THE MOUNTING STRAP WILL HOLD THE THERMOSTAT PROBE.
3. MOUNT THE THERMOSTAT ON THE BRACKET AS SHOWN IN ILLUSTRATION 'B2' USING (2) MACHINE SCREWS. POSITION THE BRACKET NEAR THE RADIATOR ALLOWING FOR THE LENGTH OF THE TEMPERATURE PROBE, AND SECURE WITH (2) SCREWS PROVIDED IN KIT SEE ILLUSTRATION 'B1' & 'B2'.
4. WIRE THERMOSTAT PER DIAGRAM.
5. START THE ENGINE AND ALLOW THE COOLANT TO WARM TO OPERATING TEMPERATURE. ADJUST THE THERMOSTAT CONTROL TO THE DESIRED SETTING BY TURNING THE CONTROL KNOB WITH A SCREWDRIVER.  
CLOCKWISE: RAISES THE TEMPERATURE AT WHICH THE THERMOSTAT ACTUATES THE ELECTRIC FAN. RANGE IS FROM 32°F TO 248°F. (HIGHER COOLANT TEMPERATURE).  
COUNTERCLOCKWISE: LOWERS THE TEMPERATURE AT WHICH THE THERMOSTAT ACTUATES THE ELECTRIC FAN. RANGE IS FROM 248°F TO 32°F. (LOWER COOLANT TEMPERATURE).

WHEN ADJUSTED PROPERLY, THE THERMOSTATICALLY CONTROLLED FAN SHOULD MAINTAIN THE ENGINE COOLANT AT OPERATING TEMPERATURE. THEREFORE THE FAN WILL NOT ACTIVATE IMMEDIATELY AFTER THE ENGINE IS STARTED WHEN COLD.



SS 12623IS DATED 08/21/97 DAYCO PRODUCTS-EAGLEMOIVE

THERMOSTAT WIRING DIAGRAM



P 12623-IS (Rev. 3/00)  
HAYDEN AUTOMOTIVE