

**INSTALLATION INSTRUCTION**  
**K-LED REBELUTION**

**EN** Subject to alteration without notice

## Explanation symbols



Correct



Incorrect



Location/Position Arrow



Movement Arrow



Warning



Disconnect



Connect



Look/See

Scope of delivery

**A**



**2XD 455 255-001**  
**2RL 455 256-001**

**B**



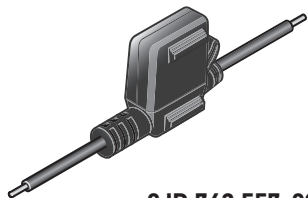
**2XD 455 255-021**  
**2RL 455 256-021**



**C**



**2XD 455 255-011**  
**2RL 455 256-011**



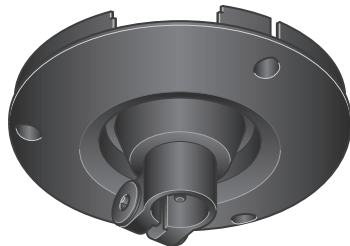
**8JD 743 557-021**



**8KW 732 580-003**



**7,5A 8JS 711 685-821**

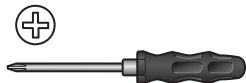


**8HG 863 302-021**

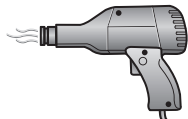
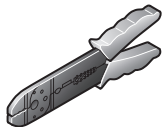
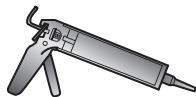
## Installation tools required



5 mm




CLEANER




## Mounting

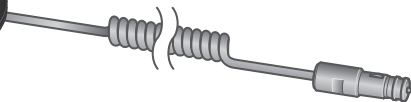
**A**  **8, 9**

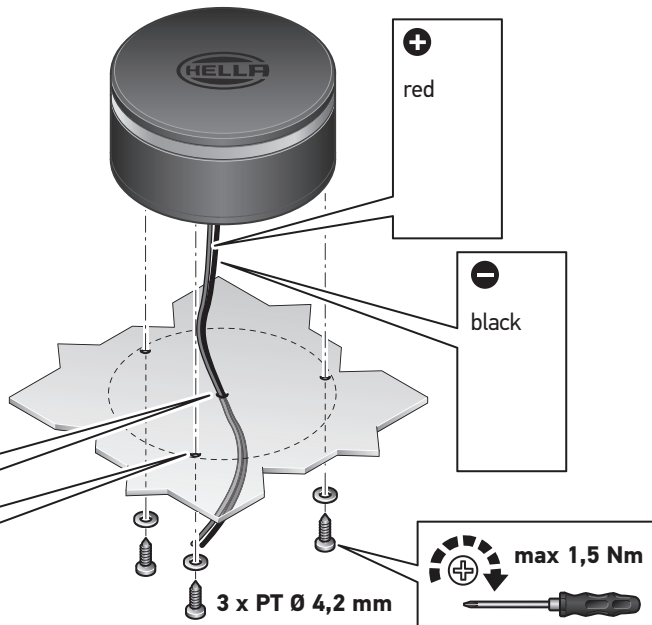
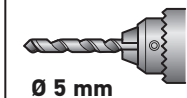
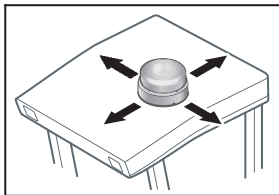


**B**  **10**



**C**  **11, 12**

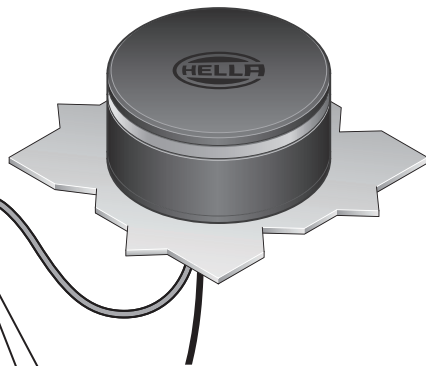


**A**



**A**

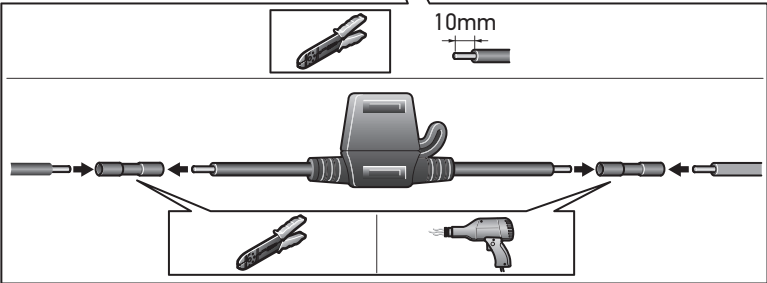
⊕  
red

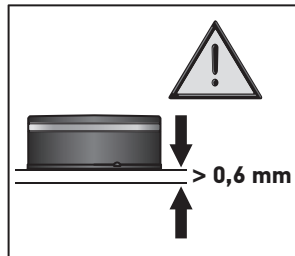
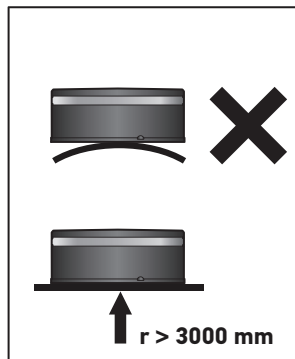
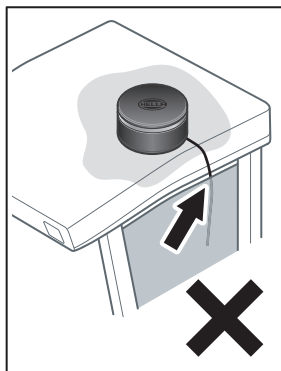
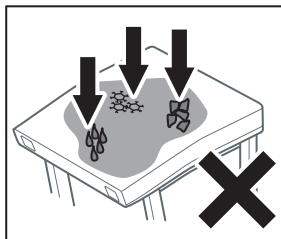
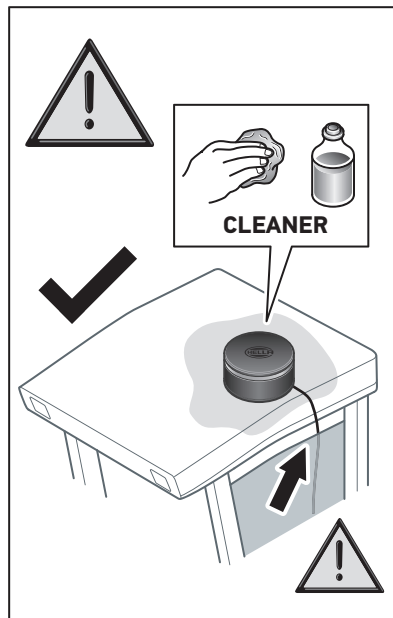


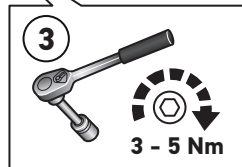
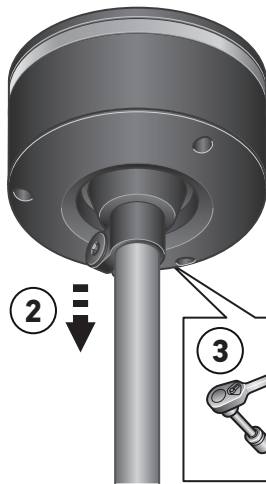
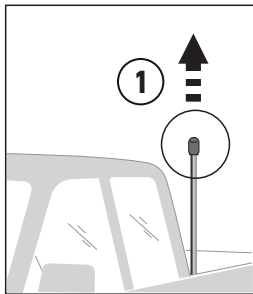
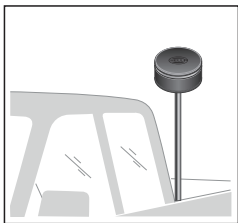
9



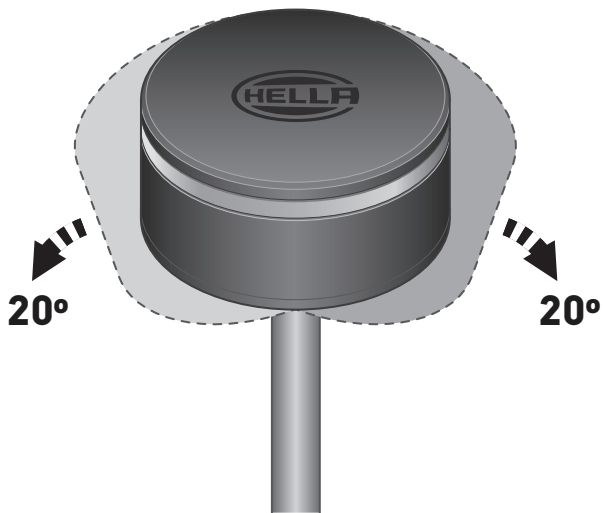
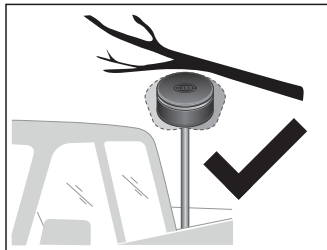
10mm



**B**  $V_{max} = 120 \text{ km/h}$ 

**C**

**C**





**Introduction:**

Industrial trucks of highly varying types are in use in large areas and in close quarters, in halls as well as outdoor areas.

**Versions DIN 14620:**

- Permanently attached beacons with stranded connection wires and base.
- Magnetically attached beacons with connection cable and plug.
- Flexible pipe connection for pipe mounting.

### Technical Data

Type approval:	455 255-XXX Flashing ECE-R65 TA1 E1 005046 ECE-R10 (E1) 10R - 058840	455 256-XXX Rotating ECE-R65 TA1 E1 005047 ECE-R10 (E1) 10R - 058840
Total current consumption	12-24V: approx. 12 V - 3,16 A 24 V - 1,58 A	12-24V: approx. 12 V - 1,08 A 24 V - 0,54 A
Interference suppression class	CISPR25 Class 5	CISPR25 Class 3
Power consumption	max. 38 W	max. 13 W
Dome	PC	PC
Operating position	Upright	Upright
Protective rating	IP6K7, IP6K9K	IP6K7, IP6K9K
Temperature range	minus 40 °C to plus 60 °C	minus 40 °C to plus 60 °C
Inverse polarity protection	yes	yes
Housing	Aluminium	Aluminium