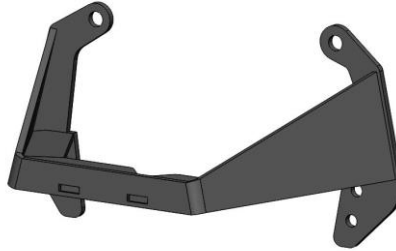




1972-1993 Dodge TR6060 Transmission Adapter BHS528 Installation Instructions



Thank you for choosing to use HOOKER™ swap products as part of your GEN3 HEMI Swap project. This Trans adapter is part of the most comprehensively engineered system of mounting components, headers and exhaust systems available for this application. Please read these instructions thoroughly before attempting installation.

PRE-INSTALLATION CONSIDERATIONS:

- Requires the use of a rubber mount – Hooker 71223029HKR (black), 71223030HKR (red), or equivalent
- Designed to be used with Hooker BHS525 swap crossmember

More GEN3 HEMI engine performance components, such as EFI fuel control systems, fuel filters, fuel pumps, plumbing hose/fittings, intakes, and valve covers.

BEFORE BEGINNING:

Check that the hardware package includes the following:

Qty.	Description
2	M10 X 25mm Bolts
2	M10 X 50mm Bolts
2	M10 Flange Nuts
2	1/2" Aluminum Spacer
1	7/8" Aluminum Spacer

INSTALLATION:

1. Using a TR6060 6-speed transmission, install the adapter bracket on the rear of the transmission using the supplied hardware.
2. Use the longer M10 bolts and 1/2" spacer for the top mounting holes as seen in **Figure 1**.
3. Install the lower (x4) mounting bolts that were from your original TR6060 mounting bracket and tighten all hardware.
4. Install rubber transmission mount using the supplied M10 bolts and nuts and tighten.
5. Raise the transmission high and install your BHS525 crossmember. Install the 7/8" spacer between the crossmember and the rubber transmission mount for correct height. Install and tighten all hardware.
6. Your transmission adapter install has now been completed and ready to be outfitted with Hooker Blackheart Dodge truck swap headers and single/dual exhaust systems are specifically designed for use with this crossmember.



Figure 1

Learn more about performance transmission parts we have.