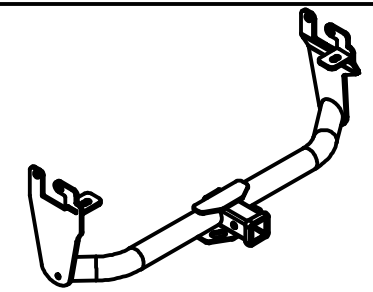




Class III Receiver Hitch Part No. 69574C

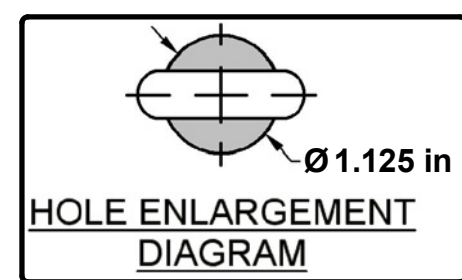
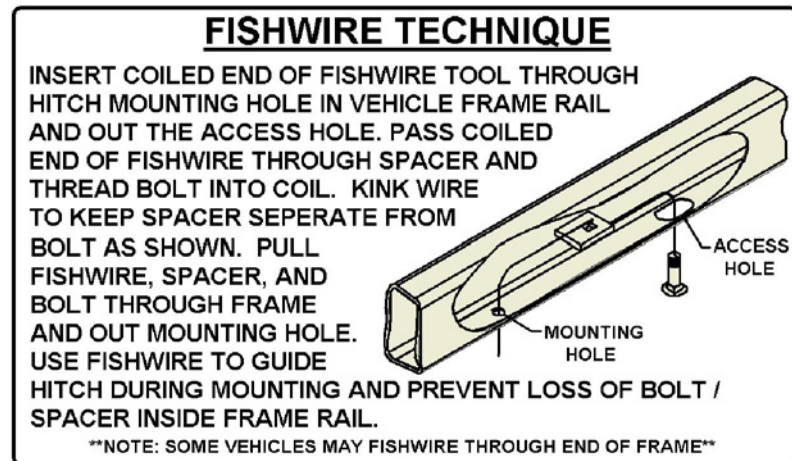
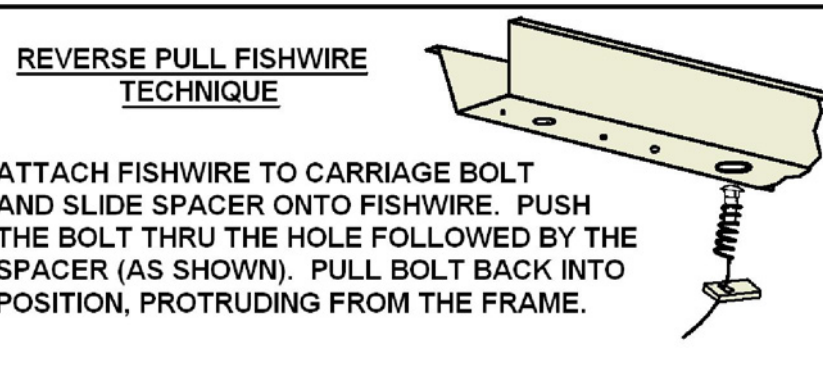


Fits: JEEP RENEGADE



GROSS LOAD CAPACITY WHEN USED AS A WEIGHT CARRYING HITCH: 3,500 LBS. TRAILER WEIGHT & 525 LBS. TONGUE WEIGHT.
WARNING: * DO NOT EXCEED VEHICLE MANUFACTURER'S RECOMMENDED TOWING CAPACITY. *****

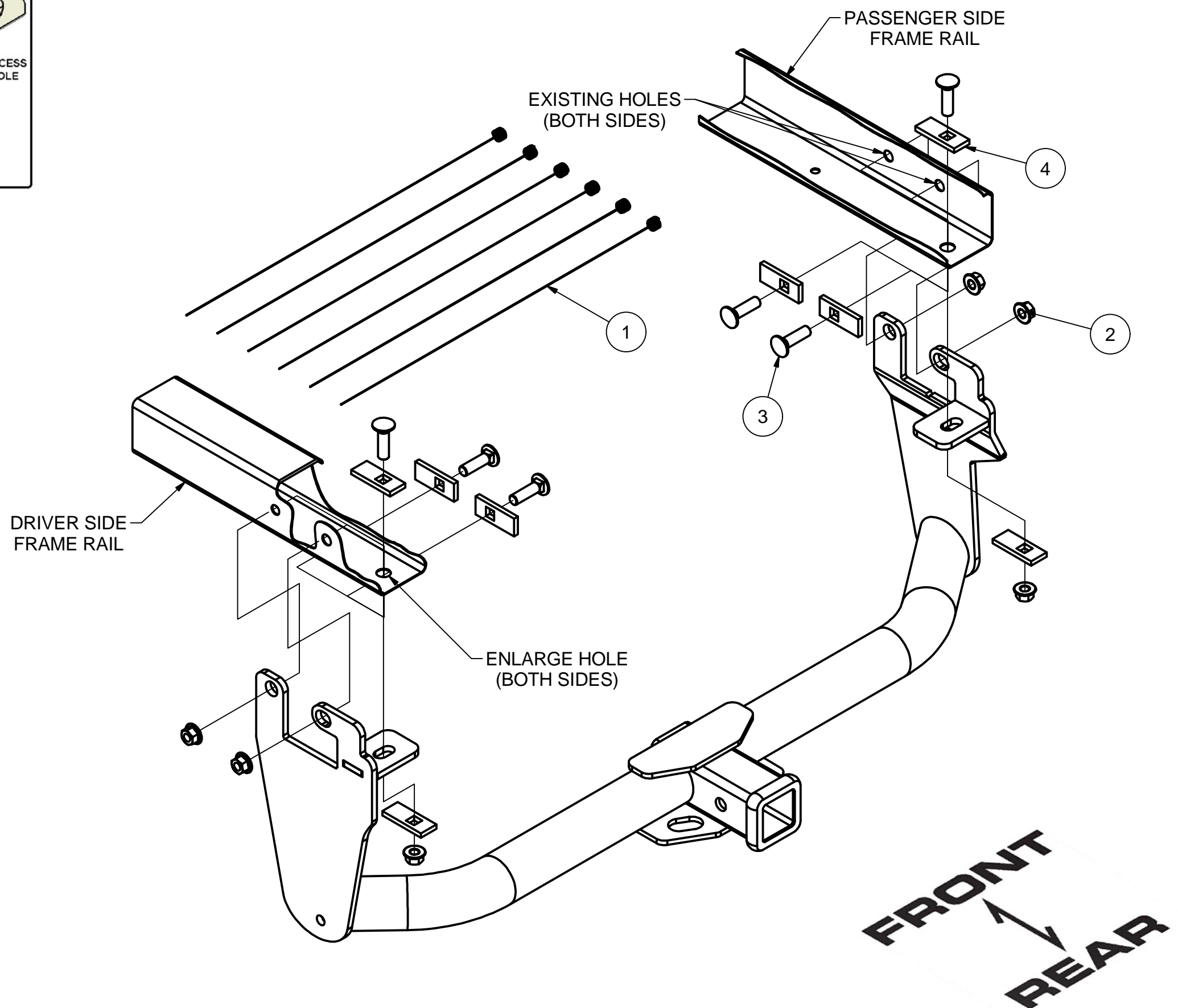
Parts List			
ITEM	QTY	PART NUMBER	DESCRIPTION
1	6	1_2 FISHWIRE	1/2" FISHWIRE
2	6	HFN 1213, GR8	HEX FLANGE NUT
3	6	1/2-13 x 1 3/4, GR8	CARRIAGE BOLT
4	8	CM-SP10	.250 x 1.00 x 2.50" SQUARE HOLE SPACER



TOOLS REQUIRED

RATCHET
TORQUE WRENCH
3/4" SOCKET
21mm SOCKET
8" EXTENSION
DIE GRINDER
UTILITY KNIFE
OFFSET SCREWDRIVER
UNIVERSAL JOINT SOCKET
SAFETY GLASSES

HITCH WEIGHT: 37 LBS.
INSTALL TIME
 PROFESSIONAL: 30 MINUTES
 NOVICE (DIY): 60 MINUTES
INSTALL NOTES:
 -HOLE ENLARGEMENT REQUIRED
 -FISHWIRE HARDWARE
 -REVERSE FISHWIRE HARDWARE
 -WELDNUT CLEANING
 -NO DRILL



INSTALLATION STEPS

- Remove (1) rubber plug on the bottom of each frame rail. Remove (2) rubber plugs on the outside of each frame rail. **Trailhawk Models:** Remove (3) M14 bolts on each frame rail using a 21mm socket and save for reinstallation. Skip to step 5.
- Enlarge the rearmost hole with a die grinder on each frame rail to allow the carriage bolts and spacers to be inserted into the frame rail. (See Hole Enlargement Diagram.)
- Clear away caulk as necessary near mounting holes using a utility knife. On the passenger side, remove (2) plastic screws retaining an access panel located in the wheel well using an offset phillips screwdriver. Save for reinstallation. **Note:** Removal of rear wheels may ease installation.
- Fishwire (2) 1/2" carriage bolts and (2) CM-SP10's into the holes on the outside of each frame rail (See Fishwire Technique Diagram). Reverse Fishwire (1) 1/2" carriage bolt and (1) CM-SP10 into the hole on the bottom of each frame rail. Keep fishwires attached until hitch is raised into position (See Reverse Technique Diagram.)
- Raise the hitch into position, thread the fishwire into the mounting holes. On the bottom attachments, place a CM-SP10 spacer on the bolt and loosely install all 1/2" flange nuts using a 3/4" socket. **Trailhawk Models:** Raise hitch and loosely install factory M14 hardware removed in Step 1.
- Torque all 1/2" hardware to 110 ft.-lbs or M14 hardware to 135 ft.-lbs. Reinstall access panel and plastic screws removed in Step 3.

PERIODICALLY CHECK THIS RECEIVER HITCH TO ENSURE THAT ALL FASTENERS ARE TIGHT AND THAT ALL STRUCTURAL COMPONENTS ARE SOUND.

Keystone Automotive Operations Inc., warrants this product to be free of defects in material and/or workmanship at the time of retail purchase by the original purchaser. If the product is found to be defective, Keystone Automotive Operations Inc., may repair or replace the product, at their option, when the product is returned, prepaid, with proof of purchase. Alteration to, misuse of, or improper installation of this product voids the warranty. Keystone Automotive Operations Inc.'s liability is limited to repair or replacement of products found to be defective, and specifically excludes liability for incidental or consequential loss or damage. This product complies with safety specifications and requirements for connecting devices and towing systems of the state of New York, V.E.S.C.

11202017

Rely only on high-grade trailer hitches & towing offered on our virtual shelves.