

PART #	DESCRIPTION
198001	BILLET SPANNER WRENCH

COMPONENTS INCLUDED	
(1) 297500 BILLET SPANNER WRENCH HANDLE	(1) 605980 ALLEN WRENCH 5/32 2.5" HANDLE
HARDWARE INCLUDED	
N/A	
TOOLS REQUIRED	
N/A	
TECH NOTES	
<p>1. ALL COIL NUTS HAVE 7 PIN HOLES PER REVOLUTION</p> <p>2. 2.0 SERIES COILOVERS HAVE 10 THREADS PER INCH (2.5 TURNS = 1/4 INCH)</p> <p>3. 2.5 SERIES COILOVERS HAVE 12 THREADS PER INCH (3 TURNS = 1/4 INCH)</p> <p>4. 3.0 SERIES COILOVERS HAVE 12 THREADS PER INCH (3 TURNS = 1/4 INCH)</p> <p>5. DO NOT ADJUST PRELOAD BEYOND ICON-SPECIFIED MEASUREMENT OF EXPOSED THREADS (REFER TO SHOCK INSTRUCTIONS FOR MEASUREMENT)</p>	



WARNING!
<p>** READ ALL INSTRUCTIONS THOROUGHLY FROM START TO FINISH BEFORE BEGINNING INSTALLATION! IF THESE INSTRUCTIONS ARE NOT PROPERLY FOLLOWED SEVERE FRAME, SUSPENSION AND TIRE DAMAGE MAY RESULT TO THE VEHICLE!</p> <p>** ICON VEHICLE DYNAMICS RECOMMENDS THAT YOU EXERCISE EXTREME CAUTION WHEN WORKING UNDER A VEHICLE THAT IS SUPPORTED WITH JACK STANDS.</p> <p>** ICON VEHICLE DYNAMICS RECOMMENDS ALL INSTALLATION TO BE PERFORMED BY A PROFESSIONAL SHOP/SERVICE TECHNICIAN. PRODUCT FAILURE CAUSED BY IMPROPER INSTALLATION WILL NOT BE COVERED UNDER ICON'S WARRANTY POLICY.</p>

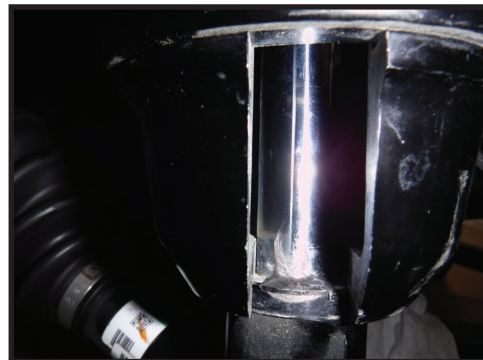
ADJUSTING PRELOAD

- Before adjusting preload, support the vehicle from the frame using a floor jack, allowing the suspension to droop fully.
- To ease adjusting process:
 - Clean the threads on the shock body of any dirt.
 - Apply a small amount of anti-seize to the threads on the shock body in the direction to be adjusted. [FIGURE 1]
- Apply a small dab of anti-seize to the top surface of the rod end in the slot of the coil cup. [FIGURE 2]

FIG.1



FIG.2

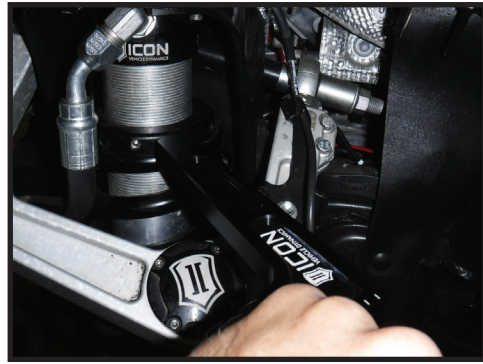


4. Using the supplied 5/32 allen wrench, loosen the set screw until the top of the set screw is flush with the surface of the coil adjuster nut. [FIGURE 3]

FIG.3



FIG.4



5. Insert the spanner wrench into the holes of the coil adjuster nut and turn to adjust [FIGURE 4]. Turn clockwise to increase preload, turn counter-clockwise to decrease preload [FIGURE 5]. The curved side of the spanner wrench works better on some vehicles, and is intended to only be used on a 2.5 coilover. [FIGURE 6]

FIG.5

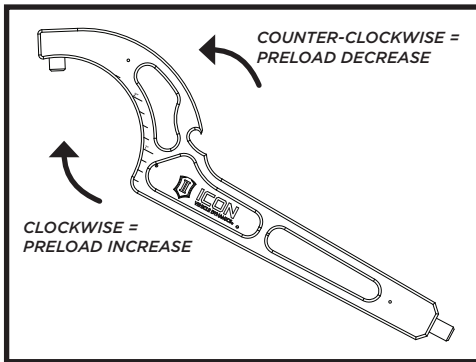


FIG.6



6. Check exposed threads on shock body using supplied measuring scale. [FIGURE 7]

FIG.7



7. After adjusting to desired height, orient coil adjuster nut and set screw to point out (towards the tire) and tighten set screw using the supplied 5/32 allen. Only tighten until snug as the tip of the set screw is nylon.

8. Store somewhere easily accessible using magnets. [FIGURE 8]

FIG.8



**VERIFY ALL FASTENERS ARE PROPERLY TORQUED BEFORE DRIVING VEHICLE.
RETORQUE ALL NUTS, BOLTS AND LUGS AFTER 100 MILES AND PERIODICALLY THEREAFTER.**