

UNIVERSAL FLOOR MOUNT  
Computer Mount  
425-5213

**JOTTO DESK®**



**PLEASE CHECK ALL BOX  
FLAPS AND INSERTS  
FOR PARTS STORED  
UNDERNEATH BEFORE  
DISCARDING BOX.  
THANK YOU.**

**WARNING:** Do not install or use this product in any manner which would interfere with any of the vehicle's controls, air bags or safety devices. Follow vehicle owner's manual instructions should a dash warning light come on after installation of this desk. Do not install or use this product in any manner which causes a safety hazard for vehicle and/or occupants.

To avoid serious injury do not place this desk or any objects between the air bags and yourself or any passengers. If necessary remove the desk before driving. Store in trunk or other safe place.

**We recommend that you do not work on the Jotto Desk while driving!  
Park safely, then use. Remember, driving safely comes first.**

**WARNING:** Make sure of and check on a regular basis that all knobs, fastening devices and handles are tight and secure. Repair or replace any faulty or worn parts. All equipment, such as computers, printers, phones, etc. must be safely secured when vehicle is in motion.

**DISCLAIMER:** The manufacturer of this product may not be held liable for any accidents, injuries or problems caused by the use or installation of this product.

*Specifications subject to change without notice.*

Jotto Desk® is a patented product and registered trademark of Assembled Products® Corporation  
425-5213|| 10/15

## REPLACEMENT COMPONENTS



Base  
425-1021



Vertical Tube Assembly  
1 Tube &  
1 Telescoping Rod  
425-5342



Articulated  
Swing Arm  
425-1188



Straight  
Swing Arm  
425-1201



Auxiliary  
Desktop  
425-5549



Brace Kit  
425-5272



Hex Key  
425-3379



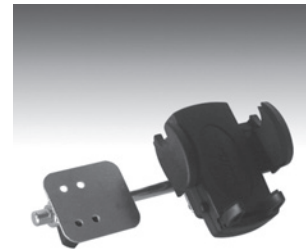
(2) Hex Head  
Cap Screws &  
(2) Lock Washers  
425-3385



Ratchet  
Handle  
425-1273

## JOTTO DESK ACCESSORIES

*Specifications subject to change without notice*



**PIVOTING CELL PHONE HOLDER**

**Model 425-5299**

Allows you to tilt your phone independent of the desktop angle. Mounts to side of 10" x 12" Desktop.



**USB LIGHT**

**Model 425-2490**

12" flexible wand with blue LED's and rheostat to adjust brightness. Three foot power cord plugs into cigarette lighter.



**KENSINGTON® MASTERLOCK®**

**Model 425-1317**

Computer securing system uses Kensington locking system. Fasten security cable to permanent structure in vehicle.



**BRACE KIT**

**Model 425-5238**

The Brace Kit attaches to the stand providing additional support. It can be adjusted in length and mounts to flat, vertical or angled surfaces.



**GLO-WRITER™**

**Model 425-3500**

Illuminating quick-note pad. Hand held for convenience. Illuminates in Red or Amber. Removable mounting options. Jot notes down, day or night... anywhere!



**SCREEN SUPPORT**

**Model 425-5999**

The Screen Support is designed to keep your screen in place while you use your computer. It attaches directly to the desk and adjusts in height and tilt angle.

## INSTALLATION PROCEDURE

READ INSTRUCTIONS BEFORE BEGINNING INSTALLATION



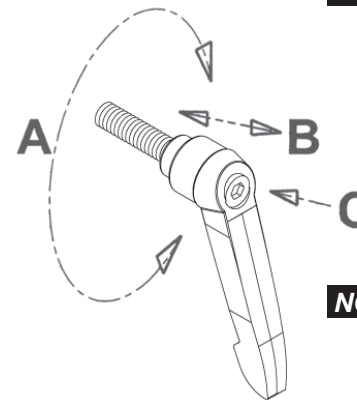
1. Prior to installation of base, we suggest you assemble the desk and place within the vehicle to establish optimum mounting position. Once established, disassemble and build as follows.
2. Place universal base in position and attach base to floor using self-tapping tech screws.
3. Adjust 7/8" post in base to a vertical position and use 1/2" wrench/socket to tighten.
4. Loosen knob on brace kit collar and slide collar up the vertical tube starting from the bottom. Position about an inch from the hex head cap screws located on the vertical tube and tighten collar.
5. Assemble the desktop stand to the mount base, starting with the vertical tube. Use 2 hex head cap screws and 2 lock washers to secure vertical tube to mount post.
6. Place articulated swing arm over the 5/8" end of the telescoping rod. Tighten with ratchet handle.
7. Attach desktop to end of articulated swing arm and secure by tightening ratchet handle.

## STAND ASSEMBLY OPERATION



1. Remove Hex Head Cap Screws from stand assembly and place tube over the Mount Base.
2. Thread (2) Hex Head Cap Screws with (2) Lock Washers through tube and into front and rear of Mount post at bottom of tube. (A)
3. Raise inner rod to desired height. Thread (2) Hex Head Cap Screws with (2) Lock Washers into front and rear holes at top of tube. (B)
4. Use provided Hex Key to tighten (4) Hex Head Cap Screws to ensure secure positioning.

## RATCHET CLAMP OPERATION



**NOTE:** Insert the ratchet handle through the unthreaded side of the articulated swing arm and tighten. Going through threaded side first will not allow the arm to tighten properly

To adjust, pull handle out (B) and rotate counter clockwise (A), release and tighten. If needed, use 1/8" hex head wrench for adjustment (C)

**NOTE:** Ratchet handles are spring loaded and can be readjusted to tighten.