

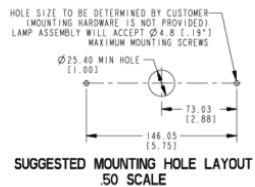
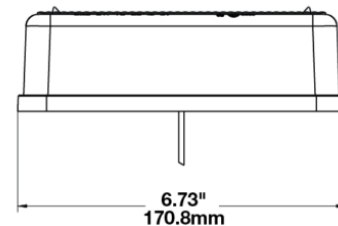
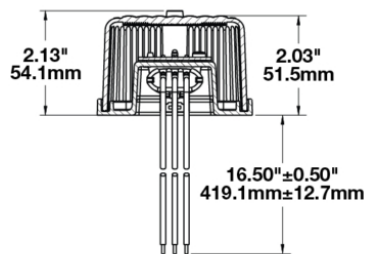
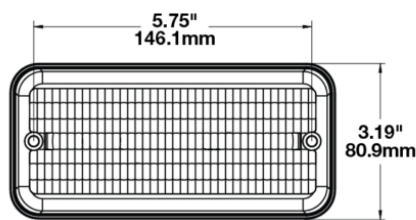
LED Signal Lights - Model 270

PRODUCT INFORMATION

| | |
|--------------------------------------|-----------------------------------|
| Description | 12V ECE/SAE LED Stop & Tail Light |
| Height | 81.03 mm / 3.19 in |
| Width | 170.94 mm / 6.73 in |
| Depth | 51.56 mm / 2.03 in |
| Shape | Rectangular |
| Outer Lens Material | Acrylic |
| Outer Lens Color | Red |
| Housing Material | ABS |
| Housing Color | Black |
| Mounting Type | Low Profile Mount |
| Minimum Operating Temperature | -40 °C / -40 °F |
| Maximum Operating Temperature | 65 °C / 149 °F |
| Connector or Wiring | 16" Bare Leads |
| Product Weight | 0.48 lbs / 0.22 kgs |
| Shipping Weight | 4.75 lbs / 2.15 kgs |



PRODUCT DIMENSIONS



LED Signal Lights - Model 270

ELECTRICAL SPECIFICATIONS

| | |
|----------------------|--|
| Input Voltage | 12V DC |
| White Wire | Tail |
| Red Wire | Stop |
| Black Wire | Ground |
| Current Draw | 0.070A @ 12V DC (Stop) 0.007A @ 12V DC (Tail) |

REGULATORY STANDARDS COMPLIANCE



| | |
|-----------------------|----------------------|
| Buy America Standards | ECE Reg 7 |
| Eco Friendly | FMVSS 108 Table IX |
| FMVSS 108 Table VII | FMVSS 108 Table VIII |
| IEC IP67 | SAE J1889 |
| SAE J2040 | SAE J2139 |
| SAE J2261 | SAE J575 |
| SAE J585 | SAE J586 |
| SAE J588 | |

PHOTOMETRIC SPECIFICATIONS

| | |
|------------------------|--|
| Beam Pattern(s) | Signalization - Stop Signalization - Tail |
|------------------------|--|

LED Signal Lights - Model 270

APPLICATIONS



ACCESSORIES



Part Number
4401771
Replacement Amber
Acrylic Lens for Model
270 Signal Light



Part Number
4420511
Replacement Red
Acrylic Lens for Model
270 Signal Light

RELATED PRODUCTS



Part Number
0341341
12V ECE/SAE LED Turn
Signal Light