

33195 – Nineteen-Five™ Mount/Demount Tool Set

MOUNTING INSTRUCTIONS

Follow Tire and Wheel Manufacturer's Instructions



Always use plenty of bead lubrication on the tire and wheel.

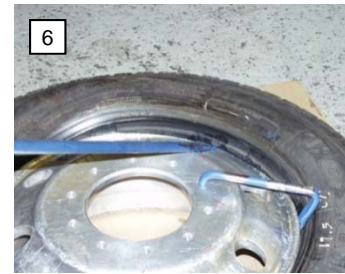
When mounting the top bead, place the bead holder (use #31710 for steel rims; #33196 (shown) for aluminum rims) on the rim and slide to one side, as a stop against the bead.

Manually push lower bead over rim and into position for mounting.

Using the **bent end** of the **Nineteen-Five** tire iron, with stop resting against the rim, pry the bottom bead over the rim.

ALWAYS MOUNT WITH WHEEL HUB SIDE UP!

Repeat progressively around tire, working with small sections, until the bead is completely over the rim.



Stand on the tire and use the **curved end** of the tool to pry a section of the top bead over the rim.

Repeat this step, taking small sections of the bead, until the last section is pried over the rim and the tire is mounted.

The **curved end** of the tool easily gets under the stretched bead for "**that last bite**".

Press the sidewall of the tire down, as you work your way around, to force the top bead into the drop center of the wheel.



↑
Curved End

↑
Bent End

33195 – Nineteen-Five™ Mount/Demount Tool Set

DEMOUNTING INSTRUCTIONS – First Bead



1

Break both beads and always use plenty of bead lubrication on the tire and wheel.

Using two **Nineteen-Five** bars, insert the curved end of each bar between the rim and wheel (about 12 inches apart) with the curve down.



2

Start by bringing one **Nineteen-Five** bar across the center of the rim. Then cross with the second bar as you move to the opposite side of the tire/wheel assembly.



3

Once the two bars are crossed, forming an "X" over the rim, press down on the two bars. This will cause the first bead to demount.

ALWAYS DEMOUNT WITH WHEEL HUB SIDE UP!

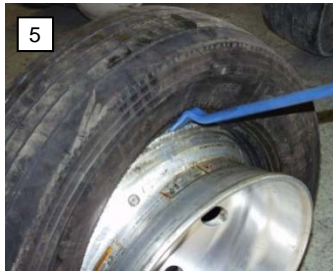
DEMOUNTING INSTRUCTIONS – Second Bead



4

Lift the assembly as shown to partially release the wheel from the tire.

Insert the **bent end** of the tire iron between the rim and wheel until the stop is resting against the rim.



5

Hold the **curved end** up as you lean the assembly toward you. Allow the wheel to lay flat in front of you.



6

While holding **down** on the tire, lift the **curved end** of the bar to demount the second bead.

Sometimes it may be necessary to use the second bar, if the tire is especially tight to pry the tire off the wheel .



33199

33196

31710

31810



WARNING

If you don't know how to use tire changing tools – **STOP!**

Tire changing should only be done by trained persons.

If you do it wrong, you could be hurt or killed.

Here are some Safety Rules.

For complete tire servicing procedures, read the tire and rim makers' service manuals. You can also get

free wall charts about tire servicing by calling

OSHA.

USING TIRE TOOLS

ALWAYS wear eye protection when using hammers and tire irons.

ALWAYS use soft-faced hammers when driving tire irons.

NEVER use one hammer to strike another hammer.

NEVER use a hammer with a loose or cracked handle.

NEVER use a dented, cracked, chipped, or mushroomed tool.

NEVER use a tire tool for anything except mounting/demounting tires.

INFLATING TIRES

NEVER add air to a tire that has been run flat or under inflated.

NEVER hammer, strike, or pry on an inflated tire and rim.

ALWAYS use an inflation cage when inflating tires.

ALWAYS use a clip-on chuck.

ALWAYS use an extension hose with a removable valve and gauge.

NEVER inflate a tire over 40 psi if the tire beads are not seated.

NEVER use starting fluid, ether, gasoline or other flammable liquids to lubricate or seat the beads of a tubeless tire. A gigantic explosion can result.