



## Tablet Memory Tire Pyrometer Customer Supplied Android® Tablet

Congratulations on your purchase of the Longacre Memory Tire Pyrometer system for use with your Android® tablet.

Before you can start taking tire temps on your race car you'll need to download and install the FREE Memory Tire Pyrometer app from the Google Play Store on your Android® tablet and refer to the enclosed Operating Instructions or Quick Setup below to:

1. Pair the pyrometer with your Android® tablet
2. Enter the SysID for your pyrometer into the App setup screen





Search for Longacre in the Google Play Store or visit the direct link to download the latest Memory Tire Pyrometer app. <http://bit.ly/PyroApp>

## Quick Setup

### Pairing the Pyrometer with the Tablet

The pyrometer probe and tablet are connected wirelessly via Bluetooth® and must be paired before you can start taking tire temps.

**PREPARE:** Close the Memory Tire Pyrometer app (if open).

**START:** Tap the **Settings** icon  to get to the settings page, tap Connections at the very top left, then tap the **Bluetooth** icon (be sure **Bluetooth** is on –slide green bar to the right ).

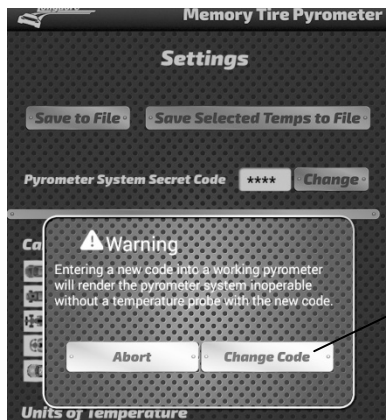
At the upper right in **MY DEVICE** tap the empty box on the right. This temporarily allows connection to unpaired devices – your pyrometer. You have 2 minutes to complete the pairing process (plenty of time). See the countdown timer. If you do not get the pyrometer paired in this time you will need to start over. (NOTE: Newer versions of Android® may not require this step and are immediately ready to pair with the steps below.)

Once you tap this box and the timer has started, press and HOLD the Pyrometer **READ** button. The LED will turn red. At this point release the READ button and momentarily push it again. The LED will go out, and then come back on steady green. In a few seconds the tablet will 'whistle' and a message will come up **"DO YOU WANT TO PAIR WITH THIS DEVICE?"** Tap **OK**. Now open the Memory Tire Pyrometer app and enter your unique SysID as described below.

# Install SysID (System ID - Secret Code)

## Your SysID

From the main display swipe right to left twice to the Setup Screen – below. Tap on **CHANGE**

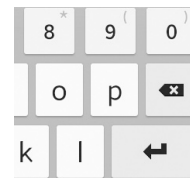
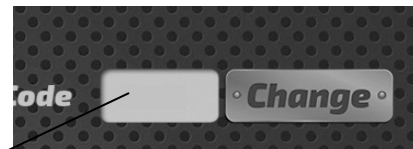


Tap on white area of the box to the right of \*\*\*\* and tap Backup key to erase current SysID. Blue arrow shows where the cursor is. All \*\*\*\* must be gone.

## Your Serial Number



Warning message comes up. Tap **Change Code**. Display changes and keyboard appears at the bottom.



Backup key

Enter your SysID on keyboard – 4 characters (may be all numbers or letters, not case sensitive). After you enter the last number or character you are done. Swipe left to right twice to get back to the main screen. Refer to the enclosed Operating Instructions for complete information on the features and settings of your Memory Tire Pyrometer system.

**NOTE: The clipboard included with pyrometer probe is designed to hold a 7" (PN 50745) or 10" (PN 50747) tablet mounted in a protective case. The clip may not properly hold your tablet if it is not in a protective case.**

## Warranty Policy Addendum for Pyrometer Systems With Customer Supplied Android® Tablet

For warranty or non-warranty work please **return the pyrometer probe and your tablet if possible. IF WE DO NOT HAVE YOUR TABLET WE CANNOT BE SURE WE HAVE CORRECTED YOUR PROBLEM.** WE REALIZE THAT SENDING YOUR TABLET OR OTHER DEVICE (NOT PURCHASED FROM US) MAY NOT BE PRACTICAL. WE WILL DO THE BEST WE CAN AND YOU WILL NEED TO FINISH THE JOB – confirm the app function, install the SysID and pair the pyrometer probe.

Refer to the enclosed Operating Instructions for complete warranty policy and information on obtaining an RMA tracking number for returning your system. **PLEASE DO NOT SEND SYSTEMS BACK WITHOUT THIS RMA NUMBER.**





# Tablet Memory Tire Pyrometer Pairing Instructions

## Pairing the Pyrometer with the Tablet

The pyrometer probe and tablet are connected wirelessly via Bluetooth®. Occasionally the pairing between the two could be lost and you will need to re-pair them. This is a very simple process that takes less than a minute.

**PREPARE:** Close the Memory Tire Pyrometer app (if open).

**START:** Tap the **Settings** icon  to get to the settings page, tap Connections at the very top left, then tap the **Bluetooth**® icon (be sure **Bluetooth**® is on –slide green bar to the right ).

At the upper right in **MY DEVICE** tap the empty box on the right. This temporarily allows connection to unpaired devices – your pyrometer. You have 2 minutes to complete the pairing process (plenty of time). See the countdown timer. If you do not get the pyrometer paired in this time you will need to start over.

Once you tap this box and the timer has started, press and HOLD the Pyrometer **READ** button. The LED will turn red. At this point release the READ button and momentarily push it again. The LED will go out, and then come back on steady green. In a few seconds the tablet will 'whistle' and a message will come up "**DO YOU WANT TO PAIR WITH THIS DEVICE?**" Tap **OK**. Now open the Memory Tire Pyrometer app. Within 5-10 seconds the connection will be made and the active temp should display.

If it still does not function – display active temp – your security system ID (SysID) may have been corrupted. See **Enter SysID** section on page 13 and re-enter it. This is very quick and simple.