

Installation Instructions

LUND Ventvisor® Deflector

For proper installation and best possible fit, please read all instructions **BEFORE** you begin.

Important Safety Information



- CAUTION - Before driving, ensure that the vent visor is properly secured to vehicle.
- Do not use automatic "brush-style" car washes.
- Do not use cleaning solvents of any kind.
- Periodically check all components for tightness.

Contents - 2 Piece Set **NOTE:** Actual product may vary from illustration.



Front Driver Side Visor



Front Passenger Side Visor



Alcohol Pad x2



Scotch Brite Pad

Contents - 4 Piece Set



Front Driver Side Visor



Front Passenger Side Visor



Rear Driver Side Visor



Rear Passenger Side Visor



C1 clips x2



Alcohol Pad x4



Scotch Brite Pad

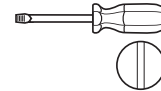
Tools Required



Car Wash Supplies



Clean Towel



Flathead screwdriver

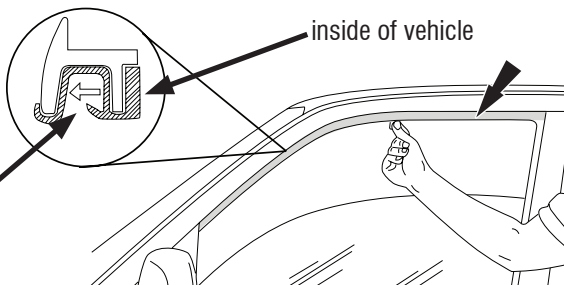
Preparation Before Painting / Installation

- A trial fit is recommended to ensure proper positioning and fit. Note that the visors are stamped with an L or R following the part number, indicating Left or Right side placement.
- Check fit of parts before painting as we will not accept the return of modified or painted parts.
- Wash your vehicle to remove any debris and/or dirt.
- Dry with a clean towel.

Installation Steps **NOTE:** Actual application may vary slightly from illustrations.



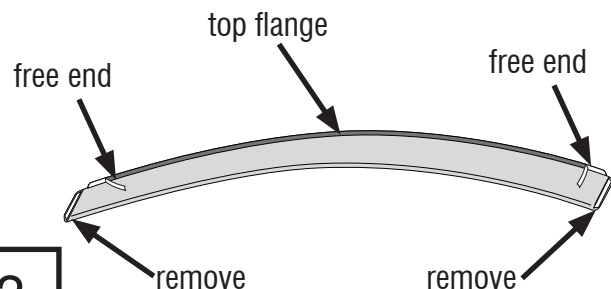
Roll down window. Buff the inside felt surface with scotch brite pad. Then clean with alcohol pad.



1

NOTE: visors mount on the **inside** of the window channel.

Remove the tape liner from the front & rear flanges. Peel back 2" of tape liner from each end of top flange.

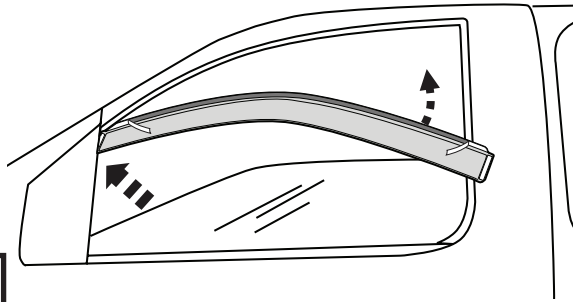


2

Installation Steps

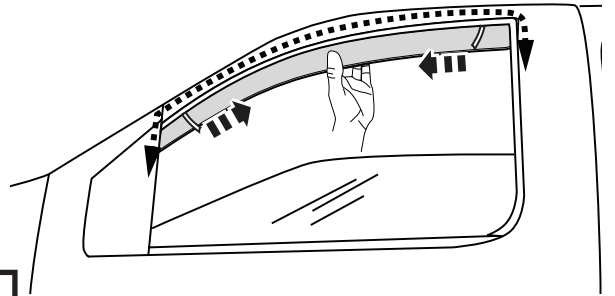
NOTE: Actual application may vary slightly from illustrations.

Insert visor into window channel, front flange first.



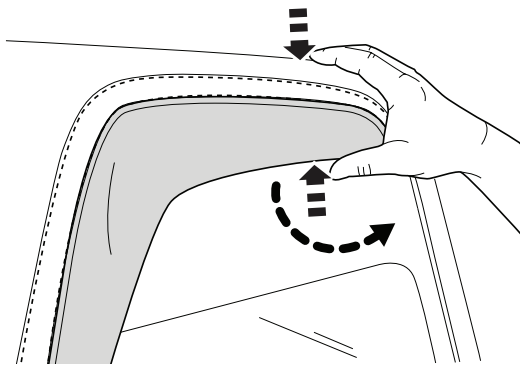
3

Apply pressure to all flange edges to ensure proper adhesion. Remove tape liner by pulling on free ends.



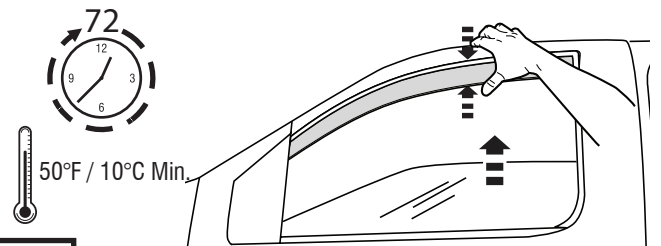
4

NOTE: It is necessary to both hold the visor up into the window channel **AND** pull the bottom of the visor slightly outward while raising the glass to seat visor properly.



5

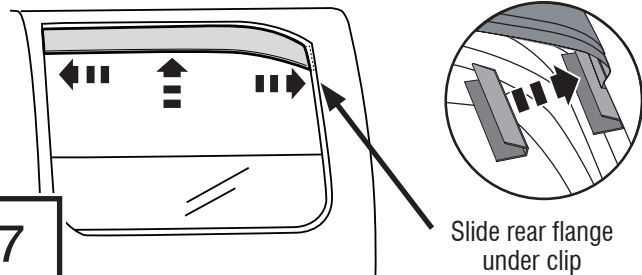
Continue to apply pressure to ensure that the visor remains properly seated inside the window channel as window is slowly closed. Leave window up for 72 hours to secure visor to window channel.



6

If the visor does not seat correctly, roll down window and repeat **Step 5**.

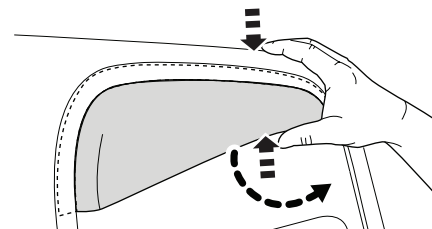
4 Piece Set Install the rear visors using the same methods as the front visor, with the exception of the rear side flange. Using a flat-head screwdriver install C1 clip at end of visor flange to compress visor into rubber window channel.



7

Slide rear flange under clip

NOTE: It is necessary to both hold the visor up into the window channel **AND** pull the bottom of the visor slightly outward while raising the glass to seat visor properly.



8

If the visor does not seat correctly, roll down window and repeat **Step 8**.

Repeat **Steps 1 thru 8** for passenger side.

Care and Cleaning

- Wash only with mild soap & dry with a clean cloth.



The material that your product is made from can be recycled. Please also consider recycling the packaging that your product came in.



Congratulations!

You have purchased one of the many quality Lund® branded products offered by Lund International. We take the utmost pride in our products and want you to enjoy years of satisfaction from your investment. We have made every effort to ensure that your product is top quality in terms of fit, durability, finish and ease of installation.

LUND®



Learn more about rain guards and wind deflectors we have.