



Installation Instructions

I-Sheet Number THX11 Rev.B

PART NUMBER: 34641522,
34641587, 34641595

PRODUCT: Terrain HX Nerf Step

APPLICATION: 07-15 Jeep JK

PARTS INCLUDED:	QTY
Driver Side Step	1
Passenger Side Step	1
HARDWARE PACK:	1
M8 X 35mm Hex Bolt	6
M6 x 20mm Hex Bolt	12
M6 Nuts	12
M6 Washers	24
3/8" Fender Washer	6
3/8" x 1 1/4" Hex Bolt	6
3/8" Speed clips	6

CAREFULLY READ EACH STEP BEFORE ATTEMPTING TO INSTALL. 2012 AND NEWER JEEP JK 2-DOOR MODELS REQUIRE THE USE OF AN ADDITIONAL BRACKET AS EXPLAINED IN THE FINAL NOTE AND SHOWN IN FIGURE 3. 2013 AND NEWER MODELS REQUIRE THE REMAINING M8 X 35mm BOLTS

Step 1: Identify Driver and Passenger side Nerf-step. **NOTE:** The passenger side front step is further away from the bend. **See figure 1.**



Step 2: Depending on your cab model, you will have to identify which hardware you will have to use for the upper mounts on the underside of the body. There will either be existing 6mm threaded holes for the M6 x 20mm hex head bolts or open slots for the 3/8" speed clips and 3/8" x 1 1/4" Hex bolts. **See fig. 2 and fig.3.**

Step 3: If your model requires the 3/8" speed clips, install at this time. **See Fig. 3.**

Lund are proud to offer a high quality product at the industries most competitive pricing!



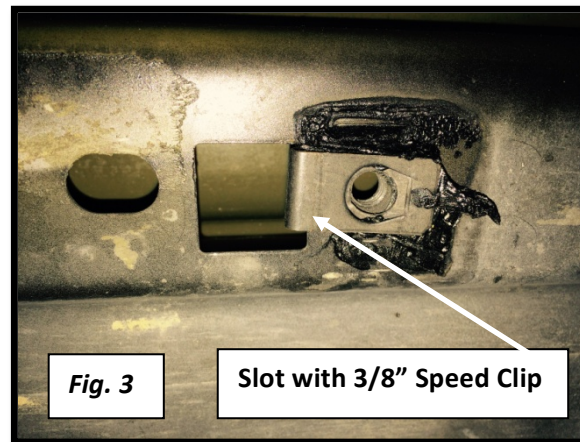
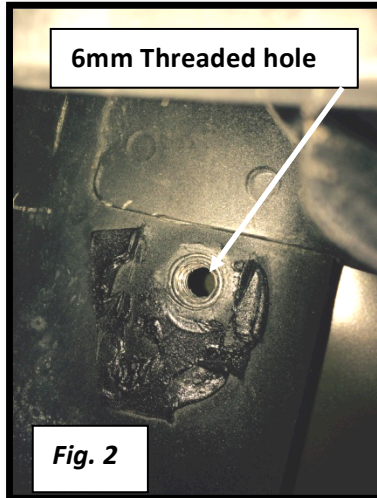
Installation Instructions

I-Sheet Number THX11 Rev.B

PART NUMBER: 34641522,
34641587, 34641595

PRODUCT: Terrain HX Nerf Step

APPLICATION: 07-15 Jeep JK



Step 4: Starting with the passenger side, raise step up to the pinch weld of the body and align brackets with the 6mm mounting holes. Install the (6) M6 x 20mm Hex bolts, and washers. Loosely tighten at this time. **Note: Some models may require the drilling out of additional 6mm mounting holes in each bracket.**

Step 5: Depending on your application, fasten the upper mounts with the supplied M8 x 35mm Hex bolts or 3/8" x 1 1/4" Hex bolt and Speed clips. Hand tighten.

Step 6: Once the step is aligned properly, tighten all hardware starting with the M6 bolts in the pinch weld and then the hardware on the underside upper mount.

Step 7: Repeat steps 1-6 for Driver side.