

Level of Difficulty

Moderate

Installation difficulty levels are based on time and effort involved and may vary depending on the installer level of expertise, condition of the vehicle and proper tools and equipment.

Parts List

Qty	Description
1	Grille guard
1	Upper guard mounting bracket, passenger side
1	Upper mounting bracket, passenger side
1	Lower mounting bracket, passenger side
1	Lower support mounting bracket, passenger side
1	Upper guard mounting bracket, driver side
1	Upper mounting bracket, driver side
1	Lower mounting bracket, driver side
1	Lower support mounting bracket, driver side
6	Hex bolt, M12-35mm
2	Hex bolt, M12-120mm
12	Flat washer, M12 (12 x 32 x 3mm)
4	Flat washer, M12 (12 x 37 x 3mm)
2	Lock washer, M12
6	Nylon lock nut, M12
2	Hex nut, M12
2	Hex bolt, M10
2	Flat washer, M10
2	Lock washer, M10
6	Hex bolt, M8
6	Flat washer, M8
6	Lock washer, M8
6	Anti-collision rubber particles

* Grille guard sold separately

Tools Required

Ratchet	Socket set
Torque wrench	Socket extensions

Product Photo



NOTICE

Before you begin installation, read all instructions thoroughly.

Proper tools will improve the quality of installation and reduce the time required.

Periodic inspection of your product should be performed to ensure all hardware and / or components remain secure.

To help prevent damage to the product or vehicle, refer to the specified torque specifications when securing hardware during the installation process.

Maintenance

Mild automotive detergent may be used to clean the product. Do not use dish detergent, abrasive cleaners, abrasive pads, wire brushes or other similar products that may damage the finish.

Torque Specifications

Metric	Torque Specifications		SAE	Torque Specifications	
	Bolt Size	Torque		Bolt Size	Torque
	M8 bolt	22 ft-lbs.		7/16" bolt	30 ft-lbs.
	M10 bolt	42 ft-lbs.		1/2" bolt	40 ft-lbs.
	M12 bolt	74 ft-lbs.		--	--
	M16 bolt	150 ft-lbs.		--	--
	--	--		--	--

Use above torque setting unless otherwise noted

Step 1

Start below the front of the vehicle. Remove the driver-side tow hooks by removing the two factory bolts from the bumper bracket on each side. (Optional reinstall rear tow hook bolt.)



Step 2

With the tow hooks removed, insert the driver-side mounting bracket into the tow hook. Secure with an M12 hex head bolt, two M12 washers, an M12 lock washer and a hex nut.

Leave the hardware loose at this time.



Step 3

Remove the bolt directly under the front tow hook bolt. Secure the passenger-side lower support bracket to the driver-side bracket and the frame using an M8 bolt, lock washer and flat washer to the bracket. Use an M12 hex head bolt, two M12 washers, an M12 lock washer and hex nut to secure to the frame.

Leave the hardware loose at this time.



Step 4

With the lower brackets installed, remove the factory bolt and nut securing the front bumper support.



Step 5

Slide the passenger-side upper mounting bracket over the studs and reinstall the factory bolt and nut.

Leave the hardware loose at this time.



Step 6

Slide the passenger-side upper guard mounting bracket between the grill and the bumper with the tab pointing up. Secure it to the passenger-side upper mounting bracket with two M8 bolts, lock washers and flat washers.



Step 7

Tighten the factory nut and bolt from step 5.



Step 8

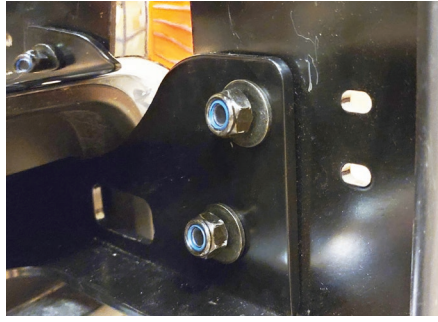
With the driver side complete, repeat steps 1 through 7 on the passenger side.



Step 9

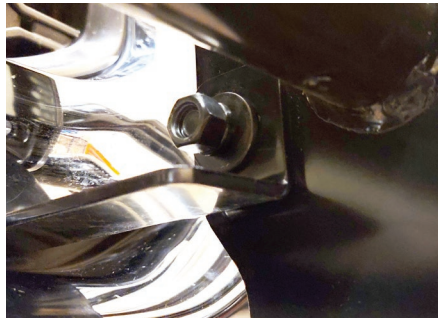
After all mounting brackets are loosely installed, with assistance, lift the grille guard into place. Secure with four M10 bolts, eight M10 flat washers and four M10 nylock nuts on the two lower mounting brackets.

Leave the hardware loose at this time.



Step 10

Use two M10 bolts, four M10 flat washers, two M10 lock washers and three M10 nuts on the two upper mounting brackets.



Step 11

Once the grille guard is aligned, tighten all hardware.

Congratulations on the installation of your new LUYERNE Prowler Max™ grille guard.

With the grille guard installed, periodic inspections should be performed to ensure all mounting hardware remains tight.

To protect your investment, see the 'Notes and Maintenance' section on page one.

