

MALONE®

****ATTENTION CUSTOMERS****

**Thank you for your recent purchase of a Malone TradeSport™
Truck Bed System.**

Please inspect all parts and hardware bags prior to assembly.



Thank you from all of us at Malone

MALONE®

CHANGING THE WAY YOU GET THERE

TradeSport™ Truck Bed System

Model MPG920 Assembly Instructions



Take a few moments and read through these instructions to familiarize yourself with the step by step assembly process before you begin turning wrenches.

Unpack and sort the components into groups as shown in the following pages.

Then assemble each group in order. Lets get started !!

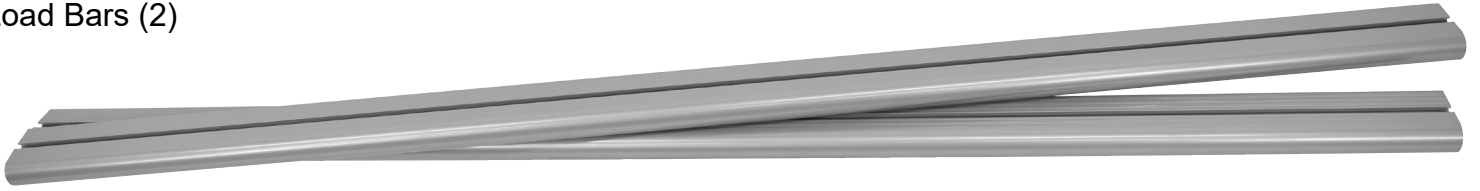
Required Tools:

- 6mm Allen wrench (provided)
- 8mm Allen wrench (provided)

*Visit us at maloneautoracks.com
for more fine products and accessories.*

Group 1: Load Bars & Uprights

Load Bars (2)



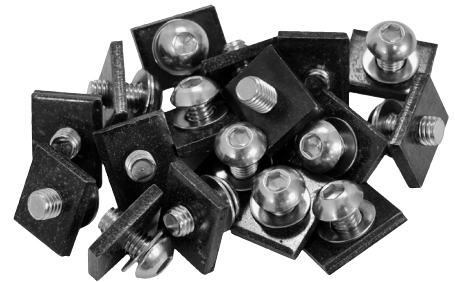
Upright Supports (4)



Load Bar Support Brackets (4)



Hardware Bag &
Allen Wrenches



6mm



Group 2: Mounting Brackets

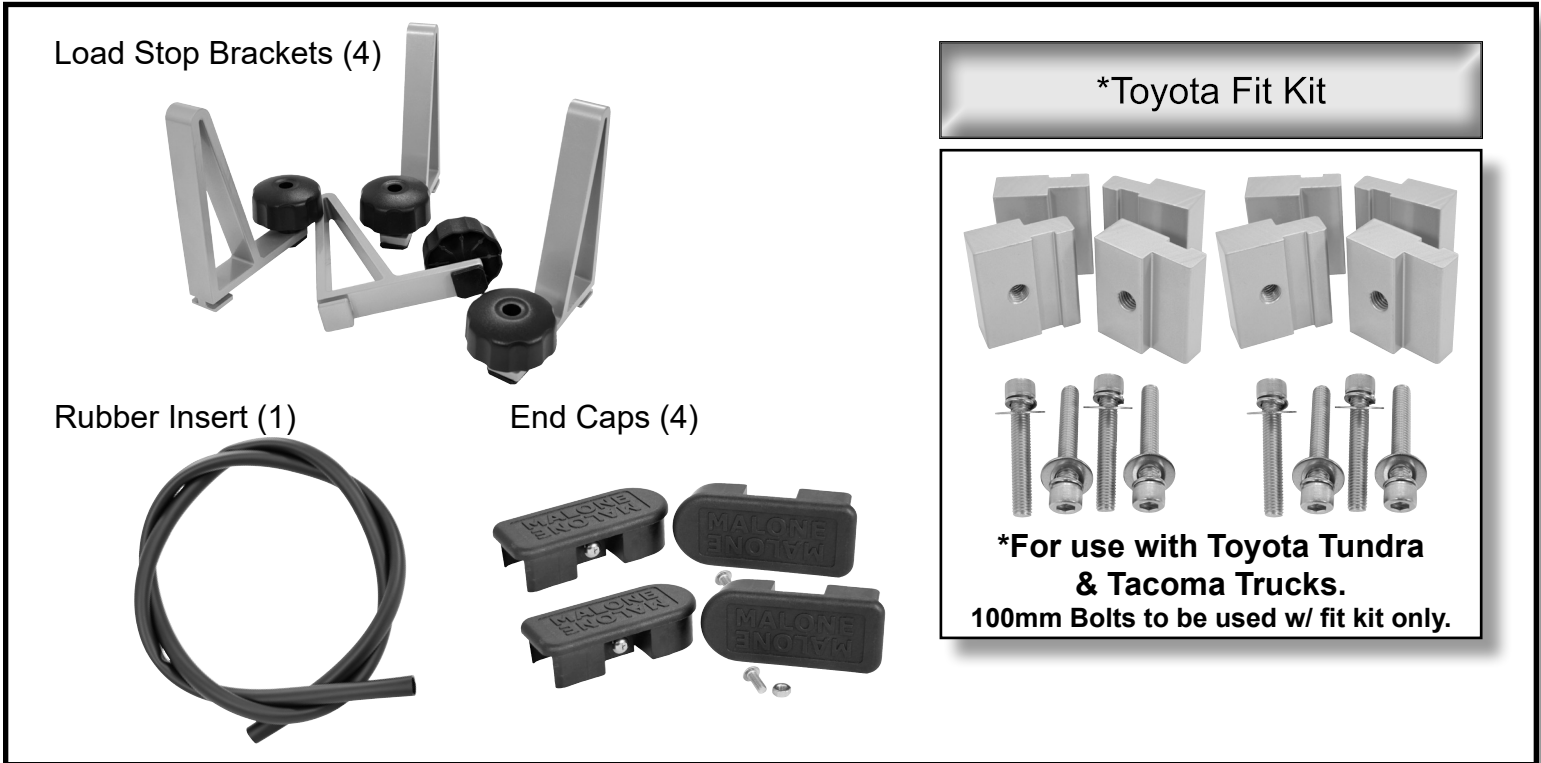
Mounting Brackets w/
Hardware (8)



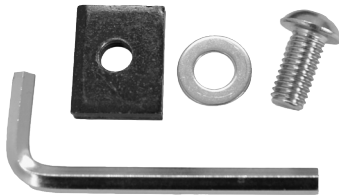
8mm



Group 3: Accessory Components



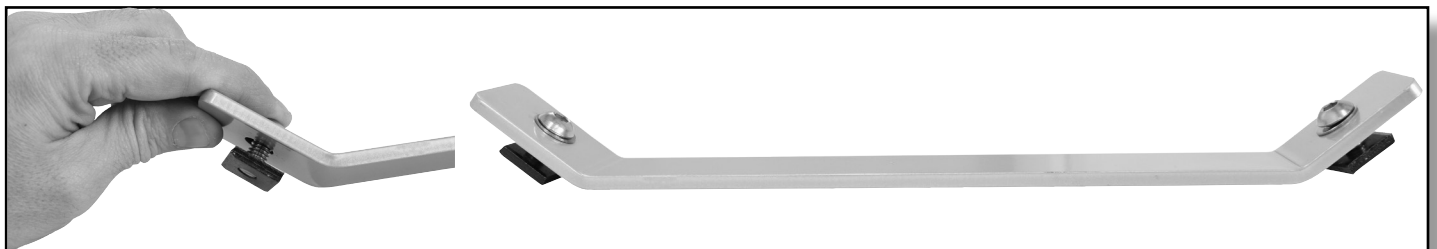
UPRIGHT AND LOAD BAR ASSEMBLY (Group 1)



1. First, open the hardware bag and remove the 6mm Allen wrench along with 8 pieces of hardware (Allen bolt, washer and T-nut).
2. Next remove the T-nut(s) and insert the bolt through the top of the Upright support as shown. Apply the T-nuts and leave them loose. Repeat with all remaining Upright Supports.

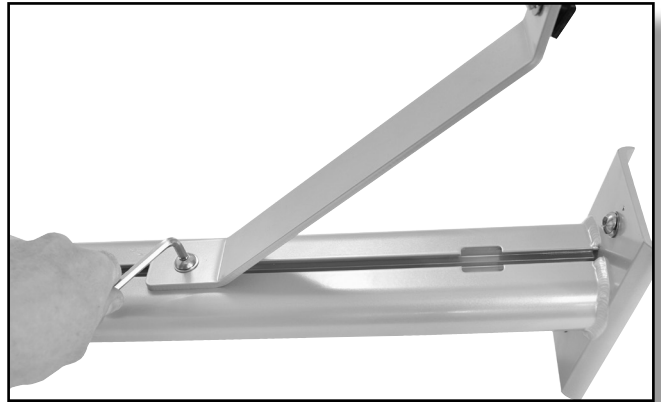
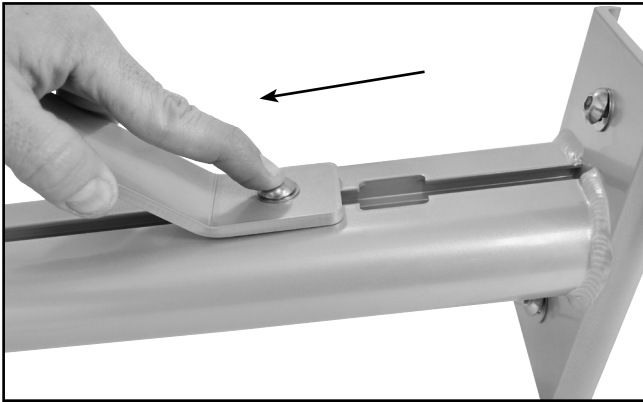
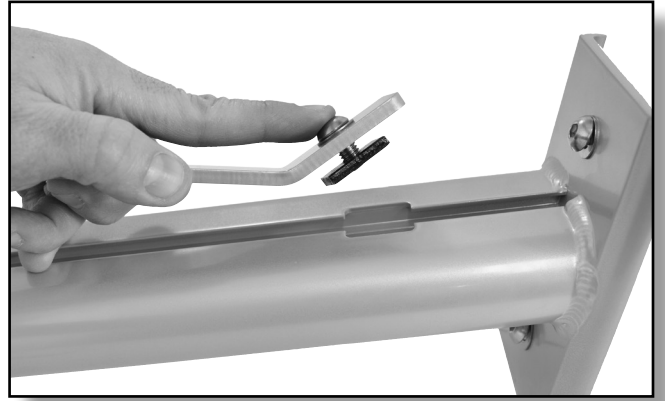


3. Repeat this process with the 4 Load bar support brackets next. Apply the hardware as shown.

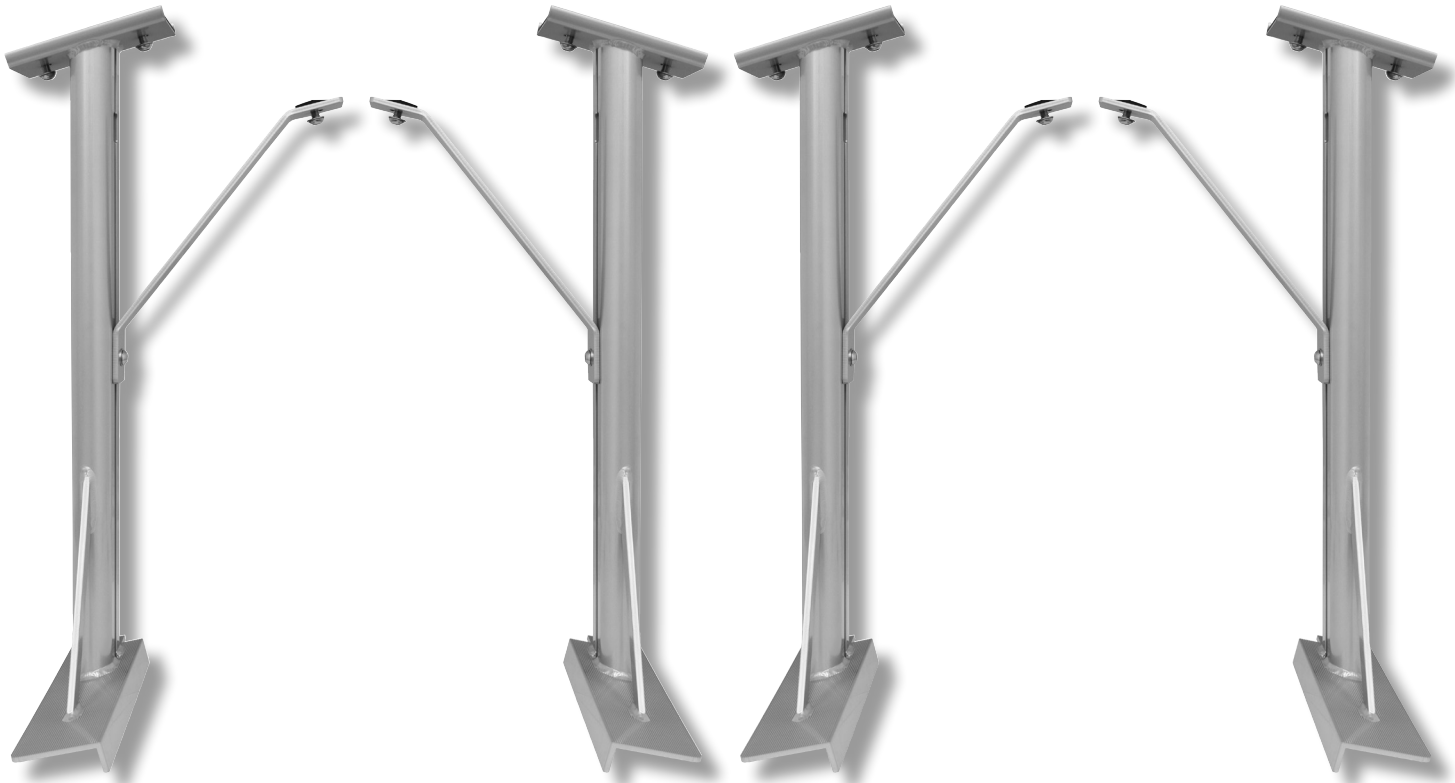


UPRIGHT AND LOAD BAR ASSEMBLY (Group 1)

1. With the hardware loosely installed in both the Upright and Load bar supports, pair one Load bar support with an Upright.
2. Align the T-nut on the Load bar support bracket to the window/opening along the inside channel of the Upright support near the top.
3. Insert the T-nut into the window/channel sliding the T-nut into place.
4. Rotate and loosely tighten the Load bar support bracket as shown. Repeat this step with the remaining 3 uprights.

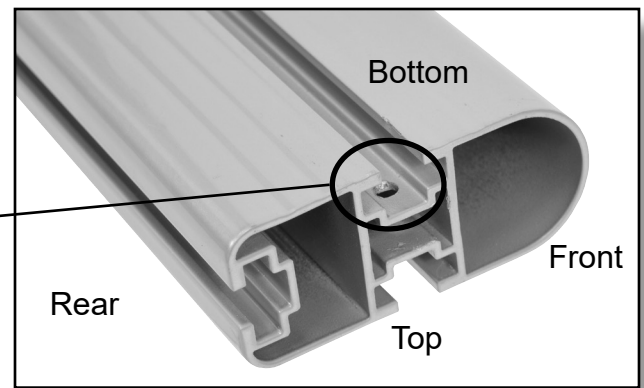


You should now have 4 completed Upright supports.
This completes the Upright assembly.



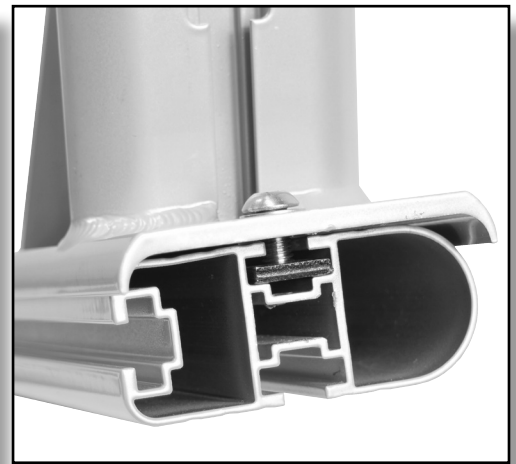
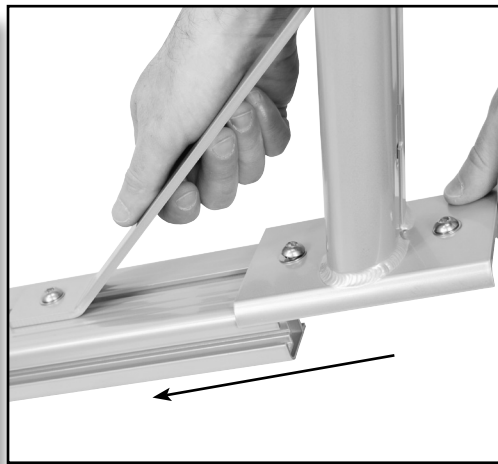
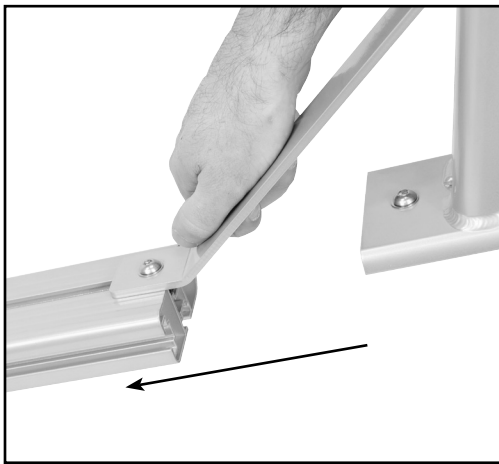
UPRIGHT AND LOAD BAR ASSEMBLY (Group 1)

We assemble this next step upside down. Begin by first identifying the bottom of the load bar by locating the mounting hole used for the end caps. This hole is along the bottom edge as pictured here.

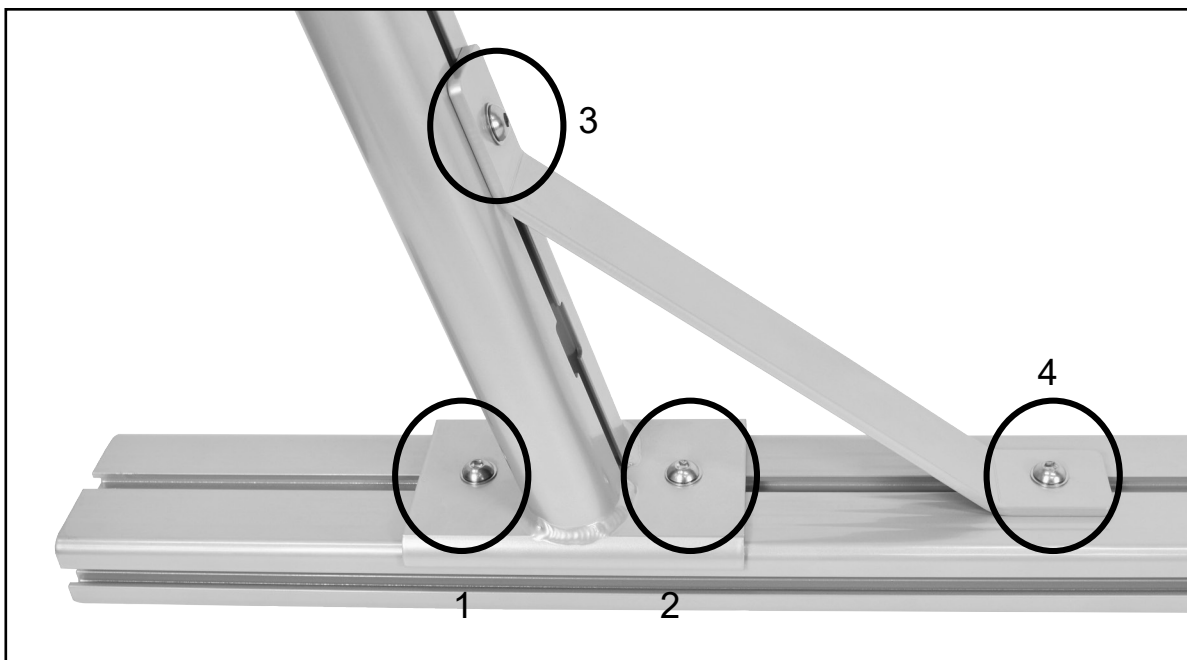


With the load bar upside down, align the t-nut(s) to the channel along the bottom of the load bar and insert the load bar support bracket followed by the upright.

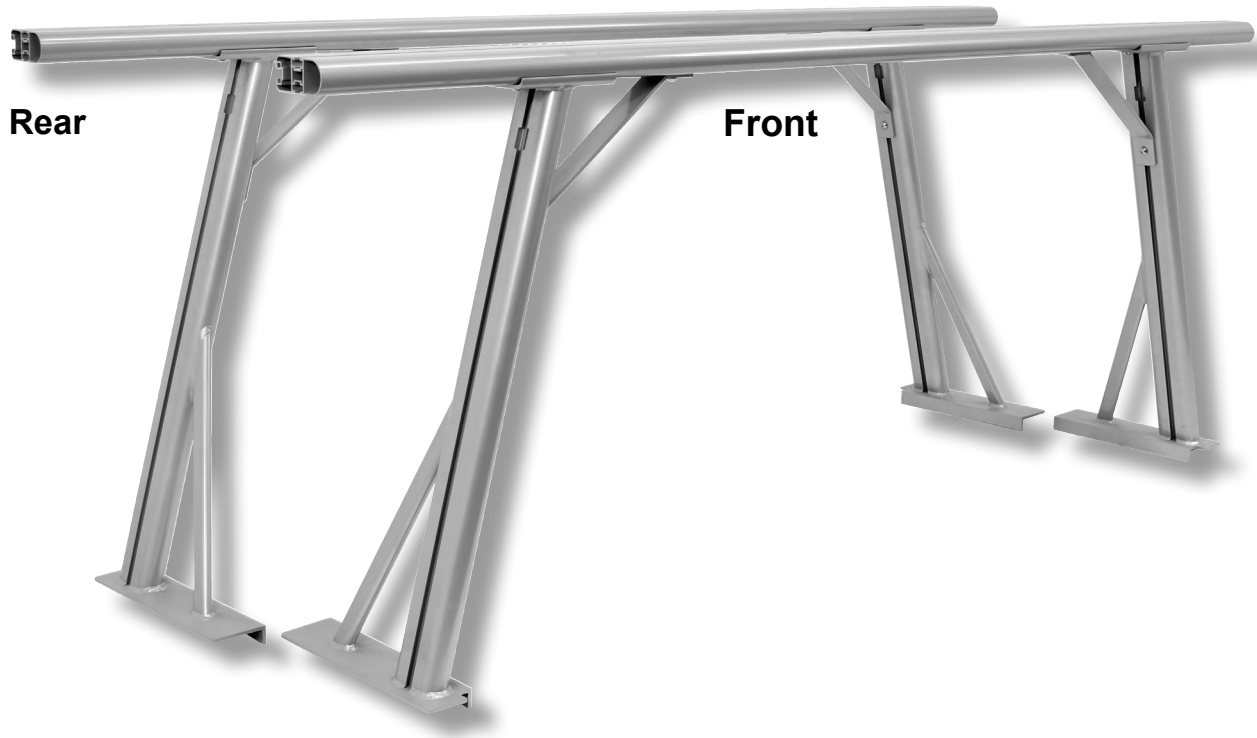
NOTE: The 'front' load bar will have the lower support braces facing inwards, or towards the rear of the vehicle. Whereas the 'rear' load bar will have the lower supports facing forwards.



Slide the upright and support bracket inwards along the load bar approximately 8". Using the provided 8mm wrench loosely secure the upright and support bracket in the sequence below. Do-Not fully tighten as we'll need to make some adjustments when placing the rack system along the bed rails. Repeat this process with the remaining uprights.



You should now have one front and one rear load bar assembly completed. (Note: Rounded edge facing front on both load bars & direction of the lower support braces.)



MOUNTING/INSTALLING THE CARGO SYSTEM (Group 2)

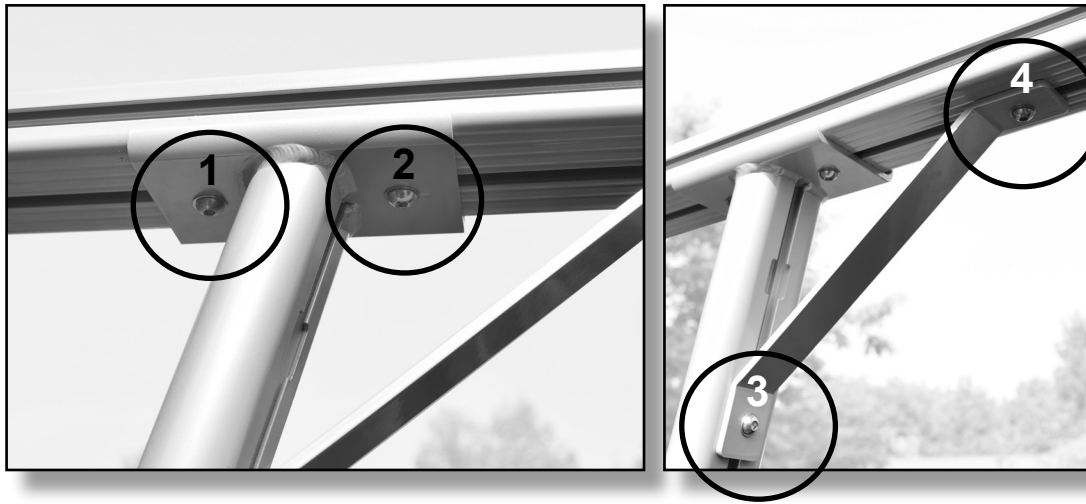
With the cargo system mostly assembled, the next steps will be done on the vehicle. Open and lower the tailgate and place the assembled cargo system in the bed of the truck. We'll start the install closest to the cab of the truck.

1. Place one padded upright base onto the bed rail of the truck as pictured. Adjust as needed so both bases rest on the bed rail in desired position. **NOTE: Direction of lower base support.**
2. Measure the load-bar extending past the upright support and make even on both sides.

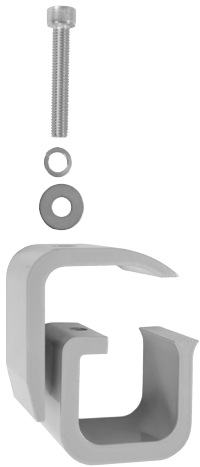


MOUNTING/INSTALLING THE CARGO SYSTEM (Group 2)

3. With the bases in position and the ends measured evenly, tighten the upright supports to the load bar in the sequence pictured here.

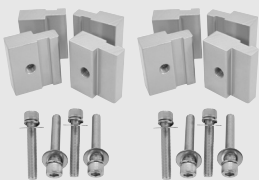


4. Pair one upper and lower mounting bracket with a mounting bolt and washers to secure the cargo system to the trucks bed rail. Place the first mounting bracket as close to the upright support as possible. Place the second mounting bracket outside the angled support as pictured. Secure fully with provided 8mm wrench. Repeat with 2 more mounting brackets for the other side.



NOTE: Toyota users will replace the bottom bracket with the provided Toyota Fit Kit and 100mm Bolts.

*Toyota Fit Kit



*For use with
Toyota Tundra
& Tacoma Trucks.
100mm Bolts to be
used w/ fit kit only.



5. The Front load bar assembly should now be secured to the vehicle as pictured below. Repeat steps 1-4 to install and secure the rear load bar assembly. NOTE: Direction of upright supports should be facing inwards/front as pictured.

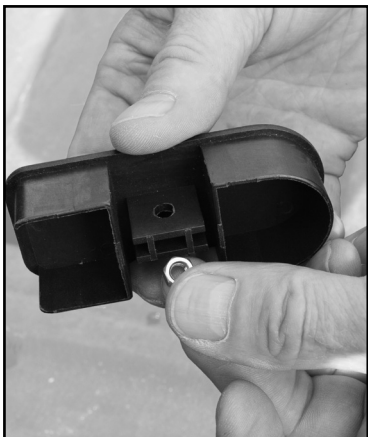


FINISHING/ACCESSORY COMPONENTS (Group 3)

With the cargo system installed and secured we can complete the assembly with the load bar end caps, load stops and rubber inserts.

Before the end caps are installed, align and install the load stops into the load bars t-slot along the top. Place in desired position and tighten with the hand knob. Note: The hand knobs are on the outside.

Pair a small nut with an end cap and insert the nut into the middle cavity of the end cap. Push the end cap into the load bars open end and secure with small screw from the bottom.



FINISHING/ACCESSORY COMPONENTS (Group 3)

The rubber inserts can be cut to length and inserted at your own choosing. It will help with minor wind noises and can prevent whistling in some scenarios.

Simply measure and cut to desired length, and insert into the channels of the cargo system. There should be enough to fill the top & bottom side of the load bars, and the outside of all 4 uprights.



This completes the assembly of your Malone Truck Bed System.

Be sure to go over and double check all hardware to insure the system is secure before using.

NOTE: * The Load Stops can be utilized on the upright supports too, creating a tie-off point, or cleat.



WARNINGS

- Do not exceed a max load of 800lbs.
- Remove the product before entering a car wash.
- Periodically check all hardware to insure the system is secure and safe.
- Adapt your driving to the load being transported. Obey all posted speed limits & traffic cautions.
- Will not work with tonneau covers. If your truck has a bed liner some alteration may be required to properly install this cargo system.