



Mastercool[®] Inc.
"World Class Quality"

R1234yf/R134a MANIFOLD GAUGE SETS

R1234yf/R134a ALUMINUM MANIFOLD GAUGE SET



- Professional extruded aluminum block
- 2 1/2" silicone dampened, recalibrateable gauges
- Free-floating piston type valves reduce o-ring wear
- Extra access port for vacuum line
- Extra large sight glass for visual refrigerant check
- Large easy-to-grip knobs
- R1234yf high and low side couplers with extended disconnect protection sleeve meets SAE J639 & J2888
- R134a high and low side manual couplers meet SAE, UL and EPA requirements for containment of refrigerant
- 1/2" acme-m x 1/2" acme-f LH thread adapter
- (2) 12 mm-m x 14 mm-f R1234yf adapters
- Set of 3 - R134a standard hoses

89636-AYF R1234yf/R134a aluminum manifold gauge set, 2 1/2" gauges, 3-36" R134a standard hoses, R134a manual couplers (82834, 82934), R1234yf couplers (83834, 83934), 1/2" acme-m x 1/2" acme-f LH thread adapter (83633), (2) 12 mm-m x 14 mm-f R1234yf adapters (83735)

89661-AYF R1234yf/R134a aluminum manifold gauge set, 2 1/2" gauges, 3-60" R134a standard hoses, R134a manual couplers (82834, 82934), R1234yf couplers (83834, 83934), 1/2" acme-m x 1/2" acme-f LH thread adapter (83633), (2) 12 mm-m x 14 mm-f R1234yf adapters (83735)

89772-AYF R1234yf/R134a aluminum manifold gauge set, 2 1/2" gauges, 3-72" R134a standard hoses, R134a manual couplers (82834, 82934), R1234yf couplers (83834, 83934), 1/2" acme-m x 1/2" acme-f LH thread adapter (83633), (2) 12 mm-m x 14 mm-f R1234yf adapters (83735)

R1234yf/R134a BRASS MANIFOLD GAUGE SET



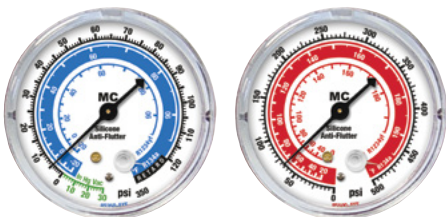
- 2 1/2" silicone dampened, recalibrateable gauges
- Extra access port for vacuum line
- R1234yf high and low side quick couplers
- R134a high and low side economy couplers
- 1/2" acme-m x 1/2" acme-f LH thread adapter
- (2) 12 mm-m x 14 mm-f R1234yf adapters
- Set of 3 - R134a standard hoses

66636-AYF R1234yf/R134a brass manifold gauge set, 2 1/2" gauges, 3-36" R134a standard hoses, R134a economy couplers (66234, 66334), R1234yf quick couplers (67434, 67534), 1/2" acme-m x 1/2" acme-f LH thread adapter (83633), (2) 12 mm-m x 14 mm-f R1234yf adapters (83735)

66661-AYF R1234yf/R134a brass manifold gauge set, 2 1/2" gauges, 3-60" R134a standard hoses, R134a economy couplers (66234, 66334), R1234yf quick couplers (67434, 67534), 1/2" acme-m x 1/2" acme-f LH thread adapter (83633), (2) 12 mm-m x 14 mm-f R1234yf adapters (83735)

66672-AYF R1234yf/R134a brass manifold gauge set, 2 1/2" gauges, 3-72" R134a standard hoses, R134a economy couplers (66234, 66334), R1234yf quick couplers (67434, 67534), 1/2" acme-m x 1/2" acme-f LH thread adapter (83633), (2) 12 mm-m x 14 mm-f R1234yf adapters (83735)

R1234yf/R134a REPLACEMENT GAUGES



	High pressure p/n	Low pressure p/n	Gauge Diameter	Units	Refrigerant Scales
	85500-AYF	85350-AYF	2 1/2"	PSI/F	R1234yf R134a