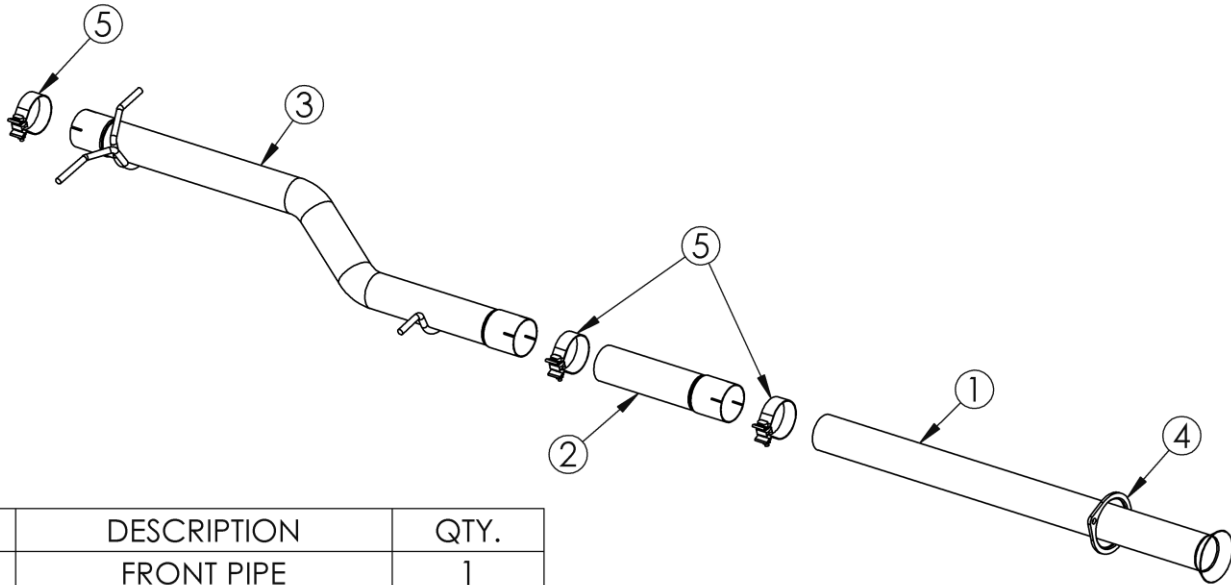


# S5145

2019-UP RAM 1500 5.7L, FACTORY DUALS,  
MUFFLER BYPASS

# MBRP



ITEM	DESCRIPTION	QTY.
1	FRONT PIPE	1
2	EXTENSION PIPE	1
3	BYPASS ASSEMBLY	1
4	FLANGE	1
5	3.0" CLAMP	3

## PLEASE READ BEFORE STARTING INSTALLATION

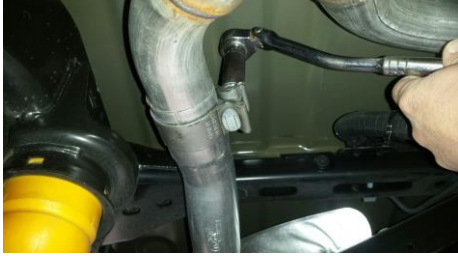
While MBRP has made every effort to ensure that all components of this system are of superior quality and properly packaged, it is the installer's responsibility to ensure the following before removal of the factory exhaust:

- that ALL components shown above are present.
- that ALL mating components fit together.
- that there are no damaged components.
- that the system you have purchased is appropriate for your vehicle year, model and configuration.
- that the system will not interfere with any modifications previously installed or planned.
- that you have read and understand these instructions.

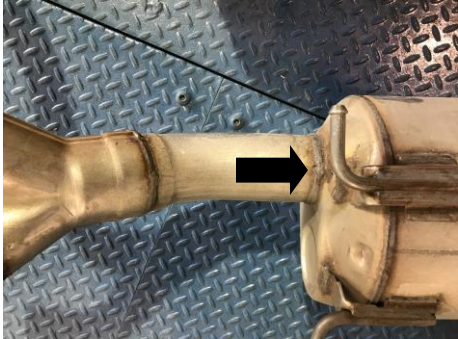
If you have any questions or are uncertain about any aspect of the installation of this system to your vehicle please contact your dealer before commencing installation.

# MBRP

Note: replaces factory rear exit duals muffler



**Figure 1**



**Figure 2**



**Figure 3**



**Figure 4**

## Removal of stock system:

1. Apply a penetrating lubricant liberally to all hangers, hardware and rubber isolators.
2. Remove both OEM tips from the truck.
3. Loosen the passenger-side tailpipe clamp before removing the hanger from the rubber isolator. Remove the passenger-side tailpipe assembly. **Refer to Figure 1.**
4. Cut the factory muffler 1" behind the muffler outlet weld bead. **Refer to Figure 2.**
5. Remove both nuts securing the muffler hanger bracket to the crossmember, keep these nuts as they are required for the install. Remove the front hanger and driver-side tailpipe hanger from the factory insulators. Remove the tail pipe assembly from the truck. **Refer to Figure 3.**
6. Remove the two bolts securing the factory muffler and remove the muffler. **Refer to Figure 4.**
7. Remove the factory front pipe, keeping the two nuts as they are required for the install.

## Installation of MBRP Performance Exhaust:

1. Install the **Flange** onto the **Front Pipe** using the nuts previously removed. Be sure the chamfer on the ID of the flange is facing the flare on the pipe.

# MBRP



Figure 5

2. The **Front Pipe** may require cutting based on the cab/box configuration. Loosely install the **Front Pipe** using the OEM nuts previously removed.

**Refer to Figure 5.**

CAB TYPE	BOX LENGTH	WHEELBASE	FRONT PIPE LENGTH
QUAD CAB	6'4"	140.5"	39.75" [NO CUT REQ'D]
CREW CAB	5'7"	144.6"	30.75"
CREW CAB	6'4"	153.5"	39.75" [NO CUT REQ'D]

4. If you have a Quad Cab Wheelbase skip to step 5. Install the **Extension Pipe** onto the **Front Pipe** using one of the supplied **3.0" Clamps**.

5. Install the factory hanger bracket onto the **Bypass Assembly**.  
**Refer to Figure 6.**

6. Install the **Bypass Assembly** onto the **Extension Pipe** (if used) or **Front Pipe** securing it with a **3.0" Clamp**.  
**Refer to Figure 7.**

7. Reinstall the factory tail pipe assembly into the **Bypass Assembly** outlets and secure them with the remaining **3.0" Clamp**.

8. Reinstall the factory tips.

9. Tighten all hardware and clamps, starting at the front and working rearward to secure the system. Check along the full length of the exhaust system to ensure there is adequate clearance for fuel lines, vent lines, brake lines, frame, bodywork, suspension and any wiring, etc. If there is any interference detected, relocate or adjust to provide adequate clearance. Ensure all clamp connections are secure and components are unable to rotate or slide. Band clamps require approximately 45 lb-ft (60 N-m) of torque. Verify clearances, system security and band clamp torque after 30-60 miles (50-100 km) of driving.

**Congratulations!** You are ready to begin experiencing the improved power, sound and driving experience of your **MBRP** performance exhaust system. We know you will enjoy your purchase.