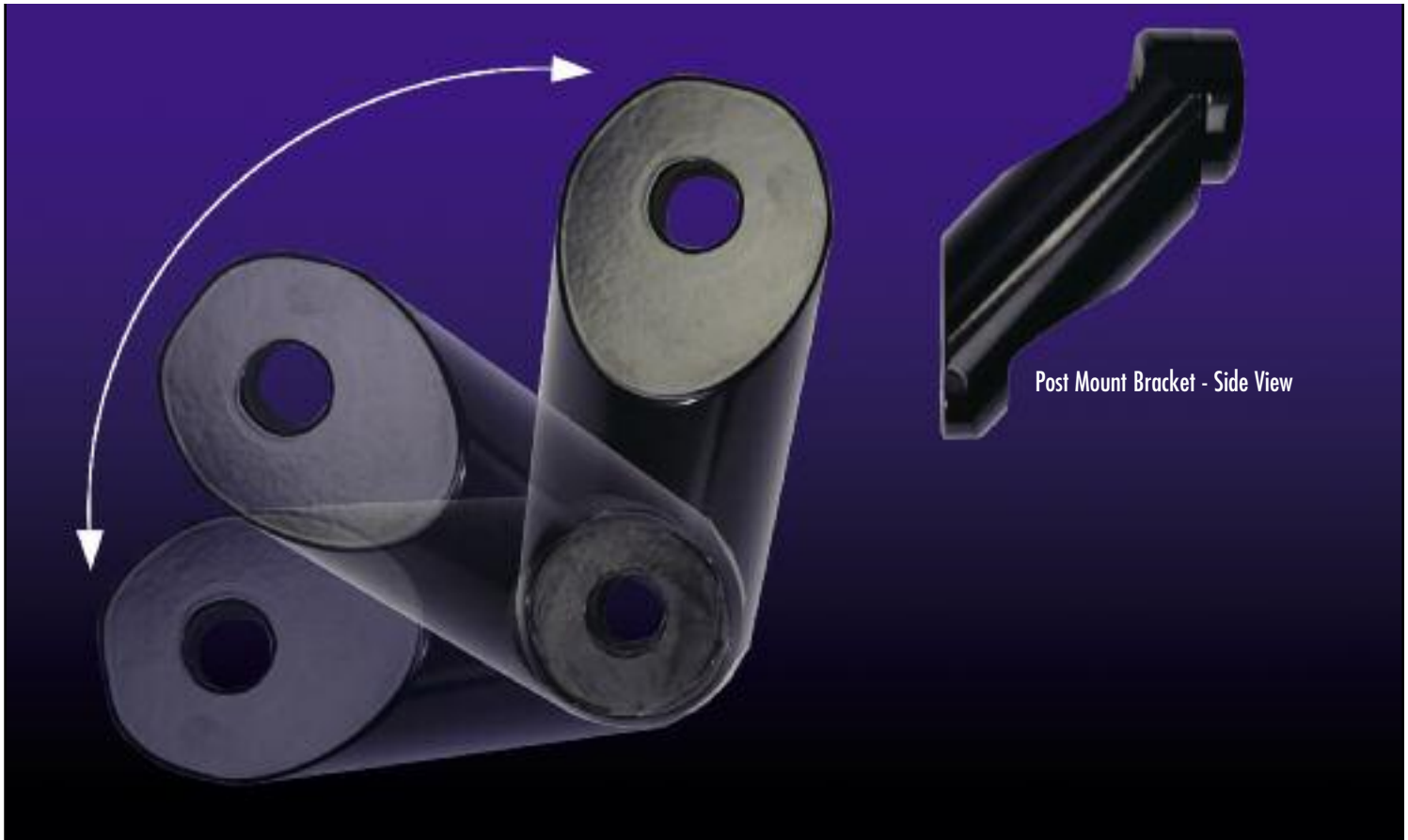
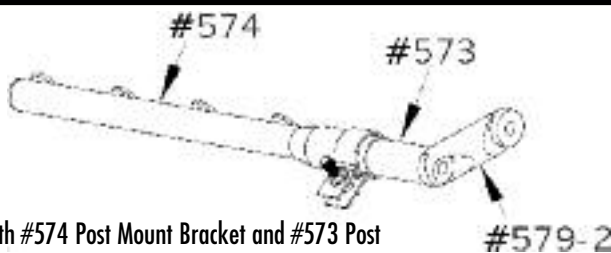


- ▲ Turn your 574 straight bracket into an adjustable mount, for those installations where nothing seems to work.
- ▲ Allows the installer to adjust the height of a straight bracket (like EZ Mount bracket).
- ▲ Delivers a full 3" sweep to allow you to find the best mounting position.
- ▲ Fits the new style air ride suspension systems. Bolts directly to the suspension hanger, eliminating hole drilling in the frame.
- ▲ Made from hardened billet steel for long life.
- ▲ Shipped in pairs, stocked in 12 Merritt warehouse locations.
- ▲ To be used with part numbers 574 Post Mount Bracket and 573 Post.

E-Z FENDER MOUNTING SYSTEMS



Post Mount Bracket - Side View



#573 Shown with #574 Post Mount Bracket and #573 Post

#579-2

Weight per unit 3 lbs
 Shipping Weight 7 lbs
(Shipped as a set - 2 per box)

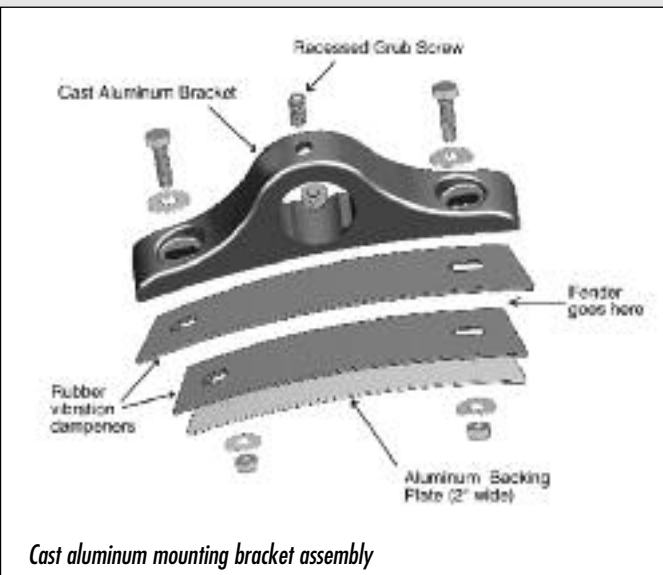
3" Offset Adapter Part Number 579-2 21A

OFFSET PIPE FENDER BRACKETS Licensed Under Patent# 5.950.975

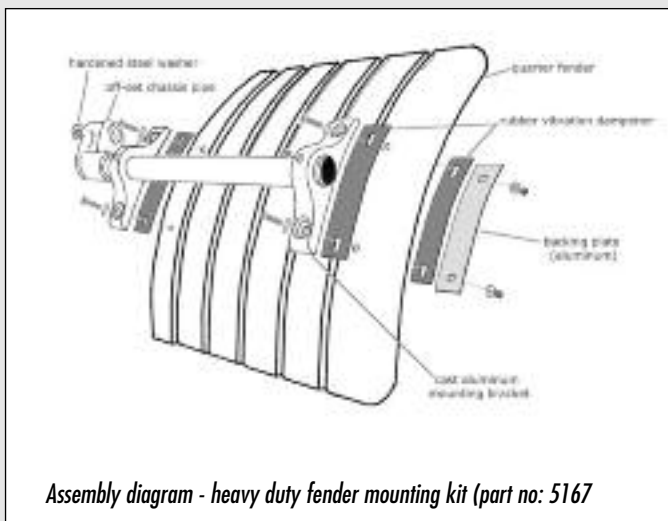
Offset Pipe Fender Bracket is designed to mount outside any fender.



Off-set chassis pipe



Cast aluminum mounting bracket assembly



Assembly diagram - heavy duty fender mounting kit (part no: 5167)

Features:

Off-set chassis pipe mounts solidly to frame with single grade 8 bolt

Installation Notes:

- ▲ It is necessary to bend TAB Lock-washers downward into the bolt to prevent unwinding.
- ▲ Torque 5/8 Nyloc nuts to 150 ft/lbs.

Features:

Cast Aluminum Brackets mount to the fender as shown, secure the Grub Screw to the pipe shaft, making those hard installations a breeze.

Installation Notes:

- ▲ Mounting bracket backing plate can be used as a template to drill holes in fender.
- ▲ When installing the 3/8" x 2 1/4" bolts, it is recommended that the bolts are not over tightened, 10inch lbs. torque.
- ▲ Secure mounting bracket to chassis pipe/tube using "Grub Screw" and 3/8" conelock nut.

E-Z HD FENDER MOUNTING KITS

Order #	Description	Weight Lbs.
5167-2	Two mounting tubes, Four cast, curved fender brackets and mounting hardware	24
5168-2	Two mounting tubes, Four cast, straight fender brackets and mounting hardware	24

Models and/or Specifications Subject to Change Without Notice.

F.O.B. - Atlanta GA, Birmingham AL, Dallas TX, Henderson CO, Houston TX, Minneapolis MN, Nashville TN, Pittsburgh PA, Sacramento CA, Kansas City KS, Calgary, AB (Canada), Toronto, ON (Canada)



GENUINE