



I-SHEET PART NUMBER: INST-00237
 PART NUMBER: **NBT07CC-TX**
 PRODUCT: **NERF BOARD**
 APPLICATION: **07-21 TUNDRA CC**

| HWKT-03054X | | QTY |
|-------------|--|-----|
| FLBW-00894X | M8-1.25 X 30MM FLANGE CAP SCREW W/WASHER | 12 |

| HWKT-09617X | | QTY |
|-------------|-------------------------------------|-----|
| BHCS-09591X | M6X16MM BUTTON HEAD CAP SCREW | 24 |
| FW-09601 | M6 FLAT WASHER | 24 |
| BHCS-09603 | M6 flanged nut | 24 |
| CARB-09609 | 3/8"-16X1" Gr 5 Steel Carriage Bolt | 12 |
| HXNT-09613 | 3/8"-16 HEX NUT | 12 |
| FW-09611 | 3/8" FLAT WASHER | 12 |

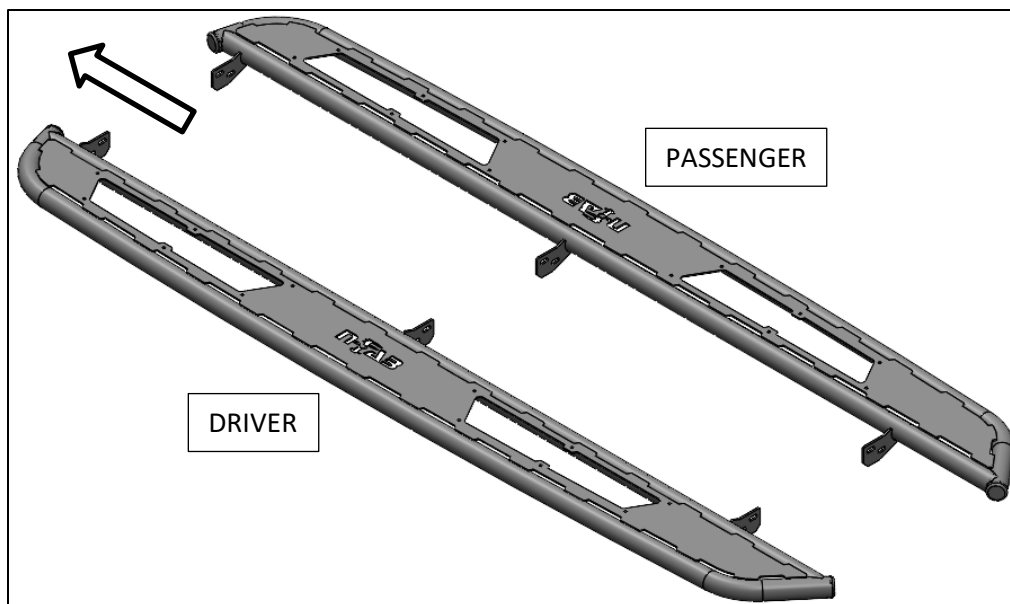
| PARTS INCLUDED | | QTY |
|------------------------------|--|-----|
| Driver Side Running Board | | 1 |
| Passenger Side Running Board | | 1 |
| Rocker panel brackets | | 6 |
| Step Plate | | 4 |

RAVEGR

RUNNING BOARD

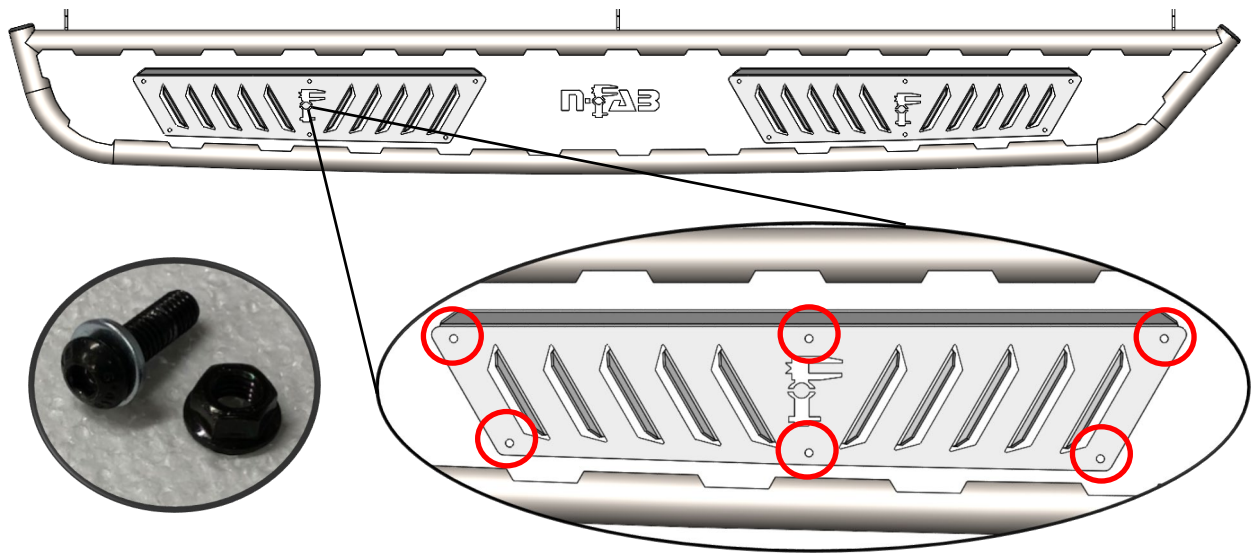


Step 1: Identify Driver Side Nerf Board.



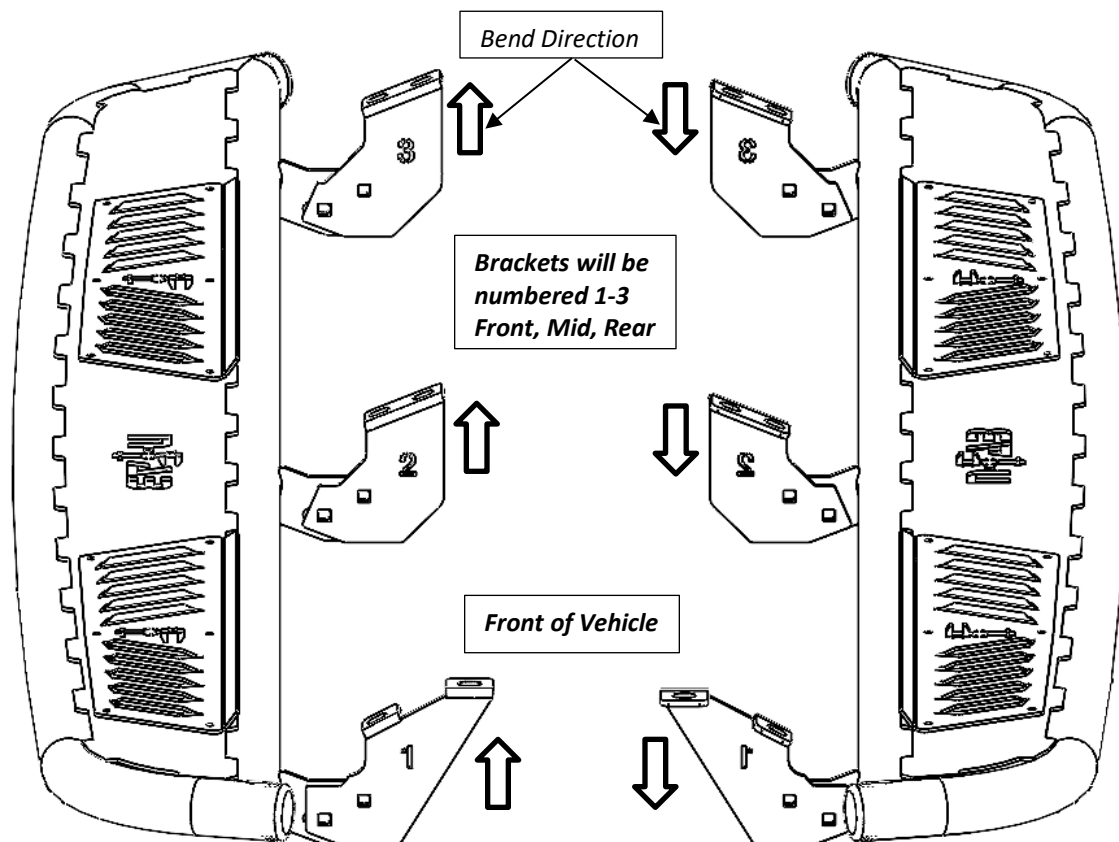
Step 2: Install the supplied step plate (x2) to each Running Board using the M6x20mm button head bolts, M6 nuts and M6 flat washer.

**** DO NOT OVER TIGHTEN ****



Step 3: Install the supplied rocker panel brackets (x6) to the attachments points located on the backside of the main tube (Driver/Passg) using the supplied 3/8" x 1" carriage bolts and 3/8" flanged nuts. Leave finger tight for now.

NOTE: BE SURE THE BEND DIRECTION OF EACH BRACKET IS CORRECT ON THE DRIVER AND PASSENGER Nerf Board.



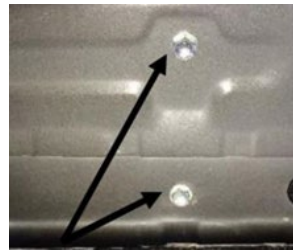
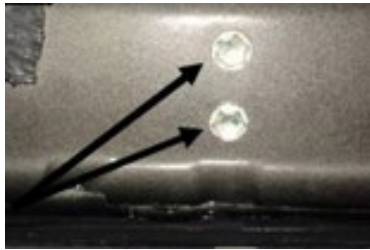


I-SHEET PART NUMBER: INST-00237
PART NUMBER: **NBT07CC-TX**
PRODUCT: **NERF BOARD**
APPLICATION: **07-21 TUNDRA CC**

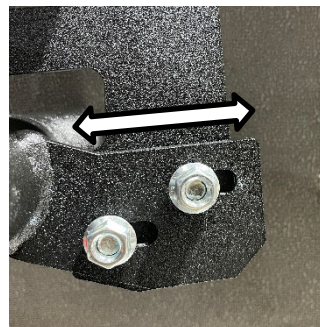
Step 4: Remove any factory hardware and discard.

Step 5: Carefully raise the Nerf Board up and match the brackets with the factory mounting locations. Next, starting with the center bracket and using the supplied M8X30mm Hex cap with washer, start and leave loose.

Step 6: Start the remaining hardware with the front and rear bracket and then tighten (18-20 ft./lbs.)



Step 7: There will be 1/2" of adjustment in the (x3) mounting bracket. Adjust to desired position and tighten to (20 ft./lbs).



Step 8: Repeat steps 4-7 for passenger side.