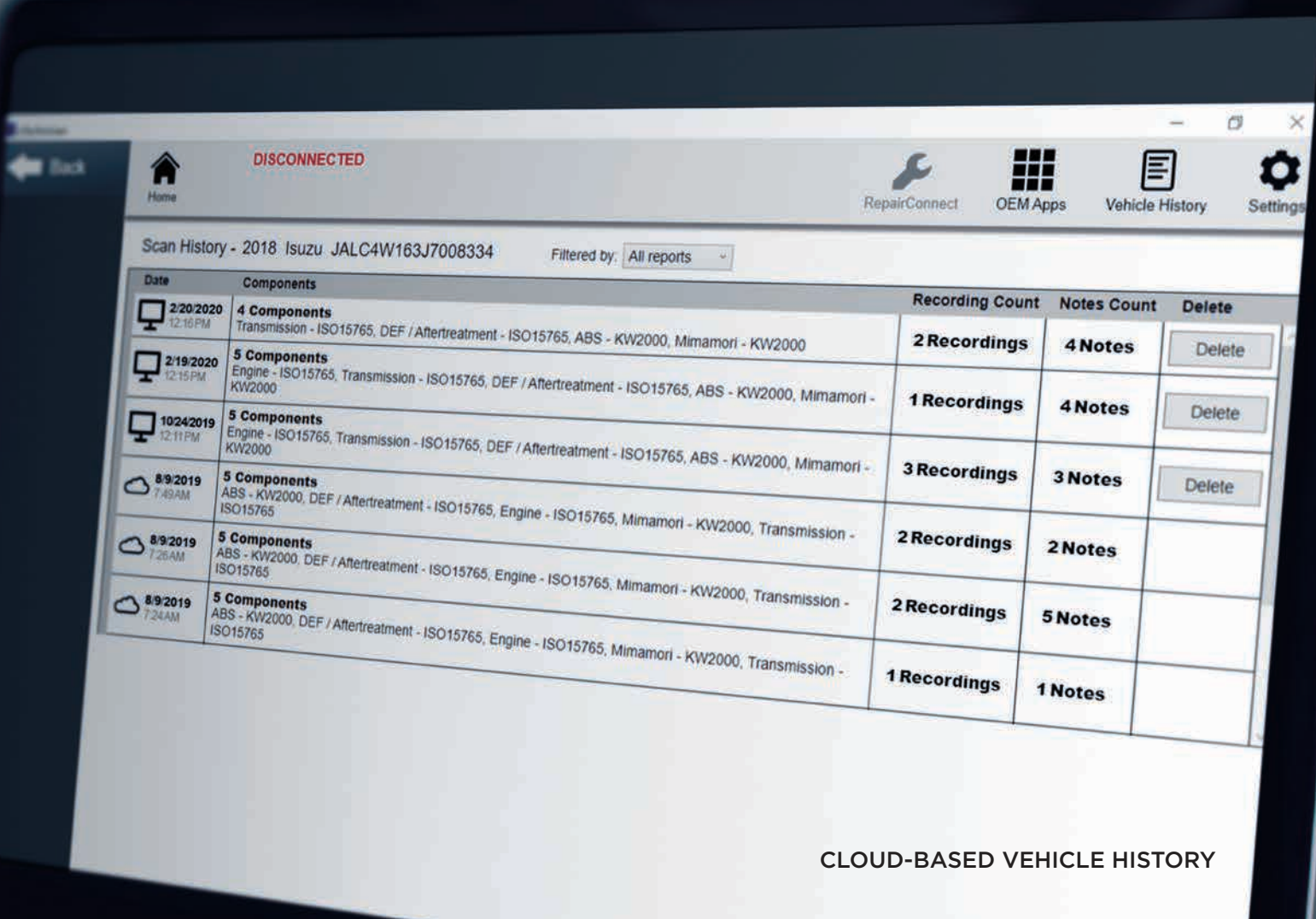


# eTechnician™ 2.1

COMPREHENSIVE COVERAGE  
BI-DIRECTIONAL SUPPORT  
CLOUD-BASED VEHICLE HISTORY

Move to the next level



CLOUD-BASED VEHICLE HISTORY

eTechnician™ 2.1

## Real-time diagnostics at your fingertips

COMPREHENSIVE COVERAGE BI-DIRECTIONAL SUPPORT CLOUD-BASED VEHICLE HISTORY

eTechnician™ 2.1 provides the data and the support required to stay competitive in today's trucking industry. Heavy-duty diagnostics on your PC was never this good—until now. We've combined extensive coverage for everything from commercial vehicles right down to light and medium-duty trucks. eTechnician 2.1 provides a powerful diagnostic capability for engines, transmission, brakes, body and chassis, and more. We've added a cloud-based, fleet-wide vehicle history report that provides user's the ability access to data for every diagnostic session for every vehicle in your fleet, regardless of location.



BI-DIRECTIONAL SUPPORT



OEM FAULT CODES

## COMPREHENSIVE COVERAGE

Diagnose virtually any commercial vehicle that comes into your shop, from Class 8 to light-duty diesels.

### ENGINES

- Cummins®
- Detroit Diesel®
  - DDEC II, III, IV, V
  - DDEC 6, 10, 13
  - MBE
- Caterpillar®
  - CAT® Engines with ACERT™ Technology
  - Caterpillar® Electronic Engines
- International®
- Navistar® MaxxForce®
- Hino®
- Volvo®/Mack®
- PACCAR®
- Light and Medium Truck (LMT)\*

### TRANSMISSIONS

- Allison®

### BRAKES

- Bendix®
- Eaton®
- Wabash®
- Haldex®
- Meritor WABCO® (Air)
- Meritor WABCO® (Hydraulic)

\*See the back of this brochure for LMT vehicle coverage and a partial listing of special tests.

## BI-DIRECTIONAL SUPPORT

In addition, eTechnician™ version 2.1 provides unprecedented bi-directional support, including changeable parameters and special tests. Included are special tests like:

- DPF Regen
- Injector Cutout
- Power Balance Test
- VGT Install and Calibrate
- High Pressure Fuel System Leak Test
- Fuel Injector Performance Test
- SCR Performance/System Test
- Aftertreatment Reset

And that's just a few of the thousands of tests that come standard with eTechnician™. The DPF Regen lets

you view the entire DPF system at a glance, or you can narrow your view to just the components that you need to see. And live values and temperatures are displayed so that you can see exactly what's happening at every stage of the regeneration process.

*You can also configure eTechnician™ with an optional subscription to the RepairConnect® diagnostic information system. You get access to a wide range of diagnostic information, including step-by-step test procedures, diagnostic procedures, component locators, wiring diagrams, and much more. Already have a subscription to RepairConnect? Not a problem; you can use your existing credentials to access Repair/Connect seamlessly within the eTechnician™ environment.*

## MARKET LEADING - LIGHT & MEDIUM TRUCK (LMT) VEHICLE COVERAGE

eTechnician LMT provides support for a wide array of light and medium-duty trucks.

### Navistar® CV Truck

- 6.6L Duramax—L5D (2019)
- Allison Transmission® (faults only)
- Body Control Module
- Chassis
- Glow Plug
- Instrument Cluster
- PTO

### Workhorse™

- 3.9L (2004–2005)
- 4.3L (1999–2005)
- 4.8L (2004–2012)
- 5.0L (1999–2000)
- 5.7L (1999–2004)
- 6.0L (2003–2012)
- 6.5L Diesel (1999–2005)
- 6.5L Turbo Diesel (1999–2002)
- 6.6L Duramax (2005–2006)
- 7.4L (1999–2000)
- 8.1L (2001–2012)

### Isuzu® Engines

- 6.0L (2005–2019)
- 5.2L (2005–2019)
- 3.0L (2011–2018)

### Isuzu® Brakes and Transmissions (2005–2019)

- NPR/NF3
- NQR/NRR
- FTR

### Dodge®/RAM® Engines

- 6.7L Cummins® (2007–2019)\*
- 5.9L Cummins® (2006–2007)
- 5.7L HEMI (2006–2019)\*
- 6.4L HEMI (2014–2019)\*
- 3.6L V-6 VVT (2006–2019)

\*Tests not available for these models for years 2018–2019

### Dodge®/RAM® Brakes, Transmissions, and Body Control Module (BCM)

- RAM® 1500–5500 (2006–2019)

### GM® Engines

- NEW 3.0L (2019)
- 4.3L (2000 and 2014–2019)
- 4.8L (2011–2019)
- 5.2L Duramax® (2004–2009 and 2017–2019)
- 5.3L (2014–2019)
- 6.0L (1999–2019)
- NEW 6.2L (2017–2019)
- 6.6L Duramax® (2001–2019)
- 7.8L Duramax® (2004–2009)
- 8.1L (2001–2009)

### GM® Brakes and Transmissions (2001–2019)

- C1500–C7500
- K1500–K3500
- T4500–T7500
- P Chassis
- W4 Chassis
- Workhorse

### Ford® Engines

- NEW 3.2L PowerStroke (2015–2019)
- 3.5L (2011–2019)
- 3.7L (2011–2019)
- 4.2L (2000–2008)
- 4.6L (2000–2016)
- 5.0L (2011–2019)
- 5.4L (2000–2016)
- 6.0L PowerStroke (2003–2010)
- 6.2L (2010–2019)
- 6.4L PowerStroke (2008–2010)
- 6.7L PowerStroke (2011–2019)
- 6.8L (2000–2016)
- 7.3L PowerStroke (2000–2003)

### Ford® Brakes and Transmissions (2000–2019)

- E250–E450
- F250–F750

## LMT DIAGNOSTIC TESTS: A PARTIAL LISTING

### Ford Vehicles

- Engine Tests
  - Power Balance Test
  - KOEO Tests
  - KOER Tests
  - Relative Compression
  - Injector Buzz Test
  - Fuel Lift Pump Relay
  - DPF Regen
- Transmission Tests
- ABS Tests

### GM Vehicles

- Engine Tests
    - Injector Cutout
    - DPF Tests
    - DEF Tests
  - Transmission Tests
  - ABS Tests
- ### ISUZU Vehicles
- Engine Tests
  - Transmission Tests
  - ABS Tests

### Dodge/RAM Vehicles

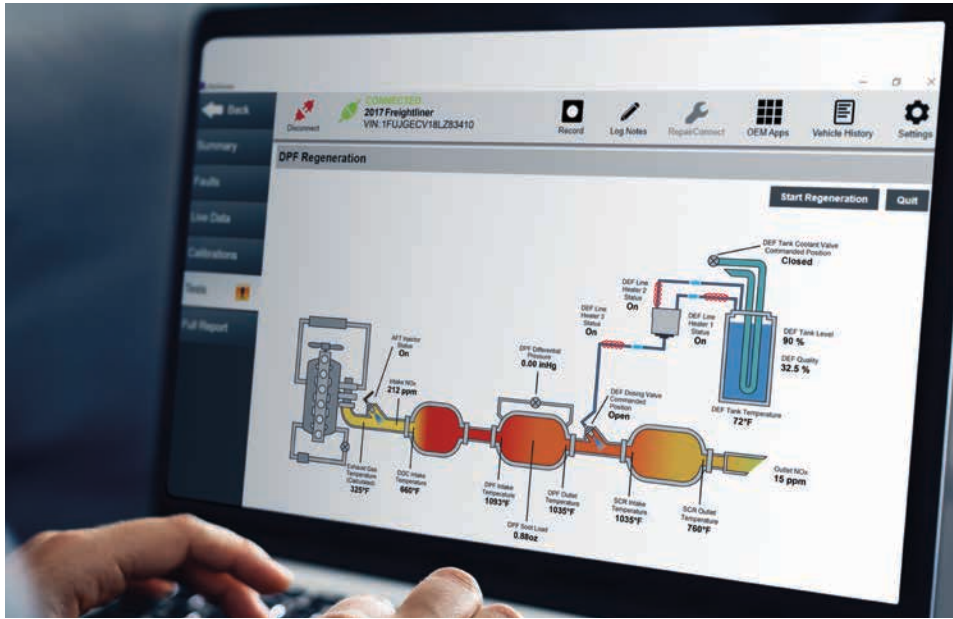
- Engine Tests
  - Cylinder Cutout
  - Cummins Engine
    - DPF Test
    - DEF
    - VGT Calibration
    - Program Injector Codes
    - Stationary De-soot (DPF Regen)
- Transmission Tests
- ABS Tests

*Disclaimer: Product specifications and data are subject to change without notice to improve functionality, reliability, design, or otherwise. Availability of tests and configurable parameters is dependent on both the vehicle concerned and the module loaded.*





## Real-time diagnostics at your fingertips



BI-DIRECTIONAL SUPPORT



CLOUD-BASED  
VEHICLE HISTORY

**eTechnician™ 2.1** gives you the data and the support required to stay competitive in today's trucking industry. Heavy-duty diagnostics on your PC was never this good—until now. We've combined extensive coverage for everything from commercial vehicles right down to light and medium-duty trucks. That gives you diagnostic capability for engines, transmission, brakes, body and chassis, and more. And we've added cloud-based, fleet-wide vehicle history to give you access to data for every diagnostic session for every vehicle in your fleet, regardless of location.

### COMPREHENSIVE COVERAGE

#### Engines

- Cummins®
- Detroit Diesel®
- Caterpillar®
- International®
- Navistar® MaxxForce®
- Hino®
- Volvo®/Mack®
- PACCAR®
- Light and Medium Truck (LMT)

#### Transmissions

- Allison®

#### Brakes

- Bendix®
- Eaton®
- Wabash®
- WABCO®
- Haldex®

### BI-DIRECTIONAL SUPPORT

- DPF Regen
- Injector Cutout
- Power Balance Test
- VGT Install and Calibrate
- High Pressure Fuel System Leak Test
- Fuel Injector Performance Test
- SCR Performance/System Test
- Aftertreatment Reset
- Scans all the electronic modules on the vehicle (HDS)
- Create custom parameter lists (HDS)
- View engine, brakes, and transmission data (LMT)

*\*Just a sample of the thousands of special tests available with eTechnician 2.1.*

### CLOUD-BASED VEHICLE HISTORY REPORTS

- Special Test Results
- Component Details
- Technician's Notes
- Recordings
- Life/Trip Data

## LMT VEHICLE COVERAGE

eTechnician LMT provides support for a wide array of light and medium-duty trucks.

### Navistar® CV Truck

- 6.6L Duramax—L5D (2019)
- Allison Transmission® (faults only)
- Body Control Module
- Chassis
- Glow Plug
- Instrument Cluster
- PTO

### Workhorse™

- 3.9L (2004–2005)
- 4.3L (1999–2005)
- 4.8L (2004–2012)
- 5.0L (1999–2000)
- 5.7L (1999–2004)
- 6.0L (2003–2012)
- 6.5L Diesel (1999–2005)
- 6.5L Turbo Diesel (1999–2002)
- 6.6L Duramax (2005–2006)
- 7.4L (1999–2000)
- 8.1L (2001–2012)

### Isuzu® Engines

- 6.0L (2005–2019)
- 5.2L (2005–2019)
- 3.0L (2011–2018)

### Isuzu® Brakes and Transmissions (2005–2019)

- NPR/NF3
- NQR/NRR
- FTR

### Dodge®/RAM® Engines

- 6.7L Cummins® (2007–2019)\*
- 5.9L Cummins® (2006–2007)
- 5.7L HEMI (2006–2019)\*
- 6.4L HEMI (2014–2019)\*
- 3.6L V-6 VVT (2006–2019)

\*Tests not available for these models for years 2018–2019

### Dodge®/RAM® Brakes, Transmissions, and Body Control Module (BCM)

- RAM® 1500–5500 (2006–2019)

### GM® Engines

- 3.0L (2019)
- 4.3L (2000 and 2014–2019)
- 4.8L (2011–2019)
- 5.2L Duramax® (2004–2009 and 2017–2019)
- 5.3L (2014–2019)
- 6.0L (1999–2019)
- 6.2L (2017–2019)
- 6.6L Duramax® (2001–2019)
- 7.8L Duramax® (2004–2009)
- 8.1L (2001–2009)

### GM® Brakes and Transmissions (2001–2019)

- C1500–C7500
- K1500–K3500
- T4500–T7500
- P Chassis
- W4 Chassis
- Workhorse

### Ford® Engines

- 3.2L PowerStroke (2015–2019)
- 3.5L (2011–2019)
- 3.7L (2011–2019)
- 4.2L (2000–2008)
- 4.6L (2000–2016)
- 5.0L (2011–2019)
- 5.4L (2000–2016)
- 6.0L PowerStroke (2003–2010)
- 6.2L (2010–2019)
- 6.4L PowerStroke (2008–2010)
- 6.7L PowerStroke (2011–2019)
- 6.8L (2000–2016)
- 7.3L PowerStroke (2000–2003)

### Ford® Brakes and Transmissions (2000–2019)

- E250–E450
- F250–F750

## LMT DIAGNOSTIC TESTS: A PARTIAL LISTING

### Ford Vehicles

- Engine Tests
  - Power Balance Test
  - KOEO Tests
  - KOER Tests
  - Relative Compression
  - Injector Buzz Test
  - Fuel Lift Pump Relay
  - DPF Regen
- Transmission Tests
- ABS Tests

### GM Vehicles

- Engine Tests
    - Injector Cutout
    - DPF Tests
    - DEF Tests
  - Transmission Tests
  - ABS Tests
- ### ISUZU Vehicles
- Engine Tests
  - Transmission Tests
  - ABS Tests

### Dodge/RAM Vehicles

- Engine Tests
  - Cylinder Cutout
  - Cummins Engine
    - DPF Test
    - DEF
    - VGT Calibration
    - Program Injector Codes
    - Stationary De-soot (DPF Regen)
- Transmission Tests
- ABS Tests

## eTECHNICIAN 2.0 LICENSING AND MINIMUM PC REQUIREMENTS

- Subscription (1 year)
- Registered at time of use
- Internet availability
- 4 GB RAM
- 500 MB Free Hard Drive Space
- i5 Processor (or equivalent)
- 1 available USB port
- 1280 x 768 monitor resolution

*Disclaimer: Product specifications and data are subject to change without notice to improve functionality, reliability, design, or otherwise. Availability of tests and configurable parameters is dependent on both the vehicle concerned and the module loaded.*

