

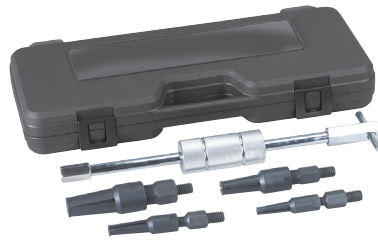
INVESTING IN OUR PULLERS PAYS YOU BACK

WARRANTED FOR LIFE TO WORK FOR YOU



**7703
10-LB SLIDE HAMMER**

- Heavy-duty 10-lb weight makes short work of manual pulling jobs
- 5/8"-18 threaded rod fits most OTC pulling attachments
- Available attachments for hub pullers, internal/external threaded shafts, 2-jaw and 3-jaw pullers



**4581
BLIND BEARING PULLER SET**

- For pulling jobs requiring an internal pull, such as pilot bearings.
- Set includes four collets which fit a wide range of applications. Select the appropriate sized collet by comparing it with the application. Insert the collet, expand it to fit the hole, then attach the slide hammer assembly.
- Four collet sizes: 7/16" to 1/2", 9/16" to 11/16", 5/8" to 1", 1" to 1-1/4".
- Set includes a 2-1/2 pound slide hammer with T-handle.



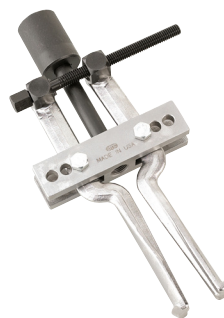
**927
10-TON PUSH-PULLER**

- Remove and install press-fit parts with authority
- For use with bearing splitters, pulley splitters and internal pulling attachments
- 8-1/4" max reach with spread range of 2-1/8" to 7-1/4"



**6627
GRIP WRENCH ADAPTERS**

- Three-piece set threads into the most common locking grip wrenches
- Female end uses 5/8"-18 thread to fit most OTC slide hammers
- Male thread sizes include 7/16"-14, 5/16"-18 and 1/4"-20



**1151
INTERNAL PULLING ATTACHMENT**

- Extended-reach of 5-1/2" and 1-1/2" to 7" spread for bigger pulling jobs
- 5/8"-18 internal thread cross-block for use with push-pullers, slide hammers and pulling screws



**4579
9-WAY SLIDE HAMMER**

- 5-pound hammer has enough force to pull stubborn axles, hubs and bearings
- Includes 2/3-jaw puller heads, puller hook, grip-wrench adapter and hub puller

Rely only on high-grade automotive tools offered on our virtual shelves.