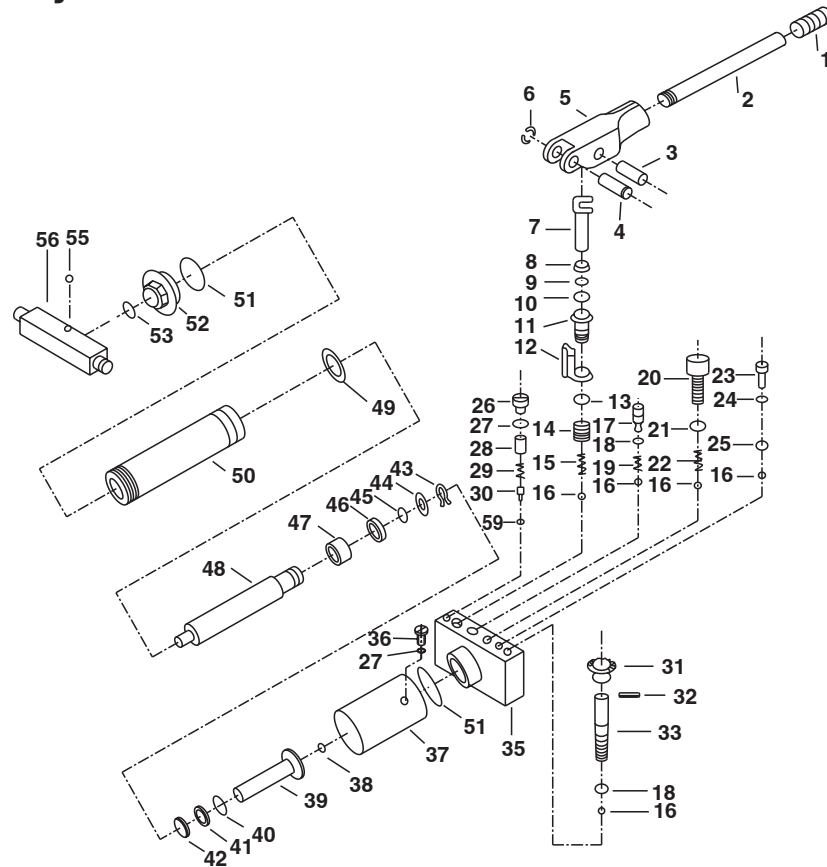


Low Lift Transmission Jack

Max. Capacity: 1,000 lbs. (500 kg)

Hydraulic Unit Hardware and Handle

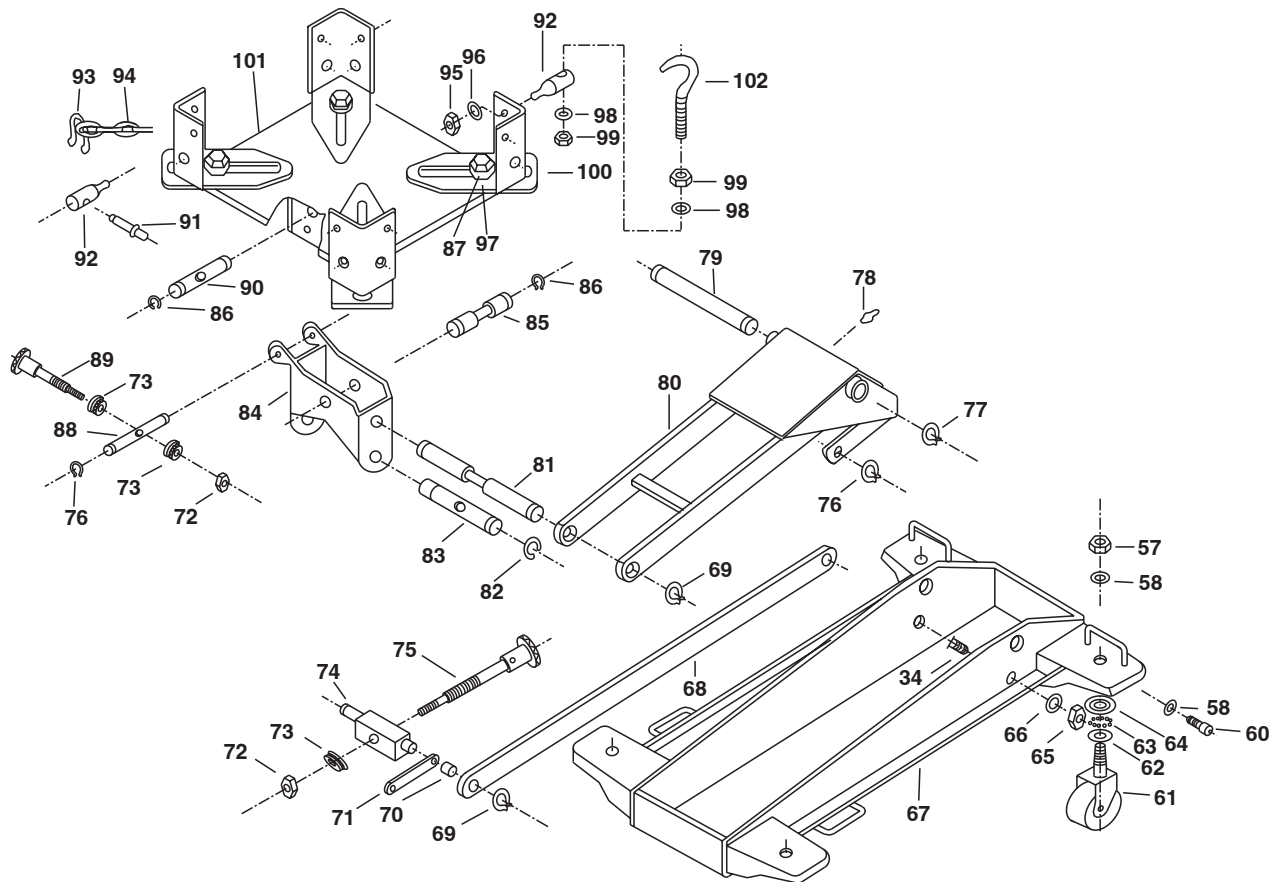


Parts List

Item No.	No. Reqd.	Description	Item No.	No. Reqd.	Description	Item No.	No. Reqd.	Description
1	1	Handle Grip	19	1	Spring	37	1	Reservoir
2	1	Handle	20	1	Screw	38	1	O-ring
3	1	Rivet	21	1	Seal Ring	39	1	Ram
4	1	Rivet	22	1	Spring	40	1	Retaining Ring
5	1	Socket	23	1	Screw	41	1	O-ring
6	1	Snap Ring	24	1	Seal Ring	42	1	Y-ring
7	1	Plunger	25	1	Ball	43	1	Retaining Ring
8	1	Wiper	26	1	Screw	44	1	Washer
9	1	Back-up Ring	27	1	O-ring	45	1	O-ring
10	1	O-ring	28	1	Screw	46	1	Retaining O-ring
11	1	Pump	29	1	Spring	47	1	Bushing
12	1	Pump Seat	30	1	Ball Seat	48	1	Piston Rod
13	1	Seal Ring	31	1	Knob	49	1	O-ring
14	1	Screw	32	1	Pin			
15	1	Spring	33	1	Release Rod			
16	5	Ball	34	2	Bolt			
17	1	Screw	35	1	Valve Block			
18	2	O-ring	36	1	Oil Fill Plug			

Continued

Hydraulic Unit Base



Parts List contd.

Item No.	No. Reqd.	Description	Item No.	No. Reqd.	Description
50	1	Cylinder	77	2	Snap Ring
51	2	Seal Ring	78	1	Grease Fitting
52	1	Cylinder Nut	79	1	Shaft Arm
53	1	O-ring	80	1	Lifting Arm Assembly
55	1	Pin	81	1	Axle
56	1	Link Rod	82	2	Retaining Ring
57	4	Nut	83	1	Axle
58	6	Lock Washer	84	1	Saddle Base
59	1	Ball	85	1	Axle
60	2	Screw	86	4	Snap Ring
61	4	Caster Assembly	87	4	Screw
62	4	Lower Plate	88	1	Axle
63	80	Ball	89	1	Screw
64	4	Upper Plate	90	1	Axle
65	2	Nut	91	2	Chain Screw
66	2	Lock Washer	92	4	Hook Guide
67	1	Side Plate	93	2	Chain Connector
68	2	Long Link Rod	94	2	Chain
69	4	Snap Ring	95	4	Nut
70	2	Spacer	96	4	Washer
71	2	Short Link Rod	97	4	Washer
72	2	Nut	98	4	Washer
73	3	Thrust Bearing	99	4	Nut
74	1	Guide Axle	100	4	Containing Angle
75	1	Screw	101	1	Saddle
76	4	Snap Ring	102	1	Chain Hook

Repair Kits

Item No. Qty. Description	Item No. Qty. Description	Item No. Qty. Description	Item No. Qty. Description
Caster Kit			
No. 527901 includes:			
57 1 Nut			
58 1 Lock Washer			
61 1 Caster Assembly			
62 1 Lower Plate			
63 20 Ball			
64 1 Upper Plate			
Chain Kit			
No. 527904 includes:			
91 2 Chain Screw			
92 4 Hook Guide			
93 2 Chain Connector			
94 2 Chain			
95 4 Nut			
96 4 Washer			
98 4 Washer			
99 4 Nut			
102 1 Chain Hook			
Grease Fitting			
No. 527910 includes:			
78 1 Grease Fitting			
Handle Kit			
No. 527903 includes:			
1 1 Handle Grip			
2 1 Handle			
Handle Pivot Kit			
No. 527917 includes:			
3 1 Rivet			
4 1 Rivet			
5 1 Socket			
6 1 Snap Ring			
Hydraulic Unit Hardware Kit			
No. 527918 includes:			
16 3 Ball			
17 1 Screw			
18 1 O-ring			
19 1 Spring			
20 1 Screw			
21 1 Seal Ring			
22 1 Spring			
23 1 Screw			
24 1 Seal Ring			
25 1 Ball			
26 1 Screw			
27 1 O-ring			
28 1 Screw			
29 1 Spring			
30 1 Ball Seat			
59 1 Ball			
Hydraulic Unit Kit			
No. 527911 includes:			
7 1 Plunger			
8 1 Wiper			
9 1 Back-up Ring			
10 1 O-ring			
11 1 Pump			
12 1 Pump Seat			
13 1 Seal Ring			
14 1 Screw			
15 1 Spring			
16 5 Ball			
17 1 Screw			
18 2 O-ring			
19 1 Spring			
20 1 Screw			
21 1 Seal Ring			
22 1 Spring			
23 1 Screw			
24 1 Seal Ring			
25 1 Ball			
26 1 Screw			
27 2 O-ring			
28 1 Screw			
29 1 Spring			
30 1 Ball Seat			
31 1 Knob			
32 1 Pin			
33 1 Release Rod			
35 1 Valve Block			
36 1 Oil Fill Plug			
37 1 Reservoir			
38 1 O-ring			
39 1 Ram			
40 1 Retaining Ring			
41 1 O-ring			
42 1 Y-ring			
43 1 Retaining Ring			
44 1 Washer			
45 1 O-ring			
46 1 O-ring Retaining			
47 1 Bush			
48 1 Piston Rod			
49 1 O-ring			
50 1 Cylinder			
51 2 Seal Ring			
52 1 Cylinder Nut			
53 1 O-ring			
59 1 Ball			
Load Block Kit			
No. 528673 includes:			
55 1 Pin			
56 1 Link Rod			
76 2 Snap Ring			
Main Pivot Pin Kit			
No. 528674 includes:			
77 2 Snap Ring			
79 1 Shaft Arm			
Pivot Screw (Long) Kit			
No. 527906 includes:			
70 2 Spacer			
71 2 Short Link Rod			
72 1 Nut			
73 1 Thrust Bearing			
74 1 Guide Axle			
75 1 Screw			
82 2 Retaining Ring			
83 1 Axle			
Pivot Screw (Short) Kit			
No. 527907 includes:			
72 2 Nut			
73 3 Thrust Bearing			
76 4 Snap Ring			
86 4 Snap Ring			
88 1 Axle			
89 1 Screw			
90 1 Axle			
Pump Station Kit			
No. 527913 includes:			
7 1 Plunger			
8 1 Wiper			
9 1 Back-up Ring			
10 1 O-ring			
11 1 Pump			
12 1 Pump Seat			
13 1 Seal Ring			
14 1 Screw			
15 1 Spring			
16 1 Ball			
Ram Kit			
No. 527916 includes:			
38 1 O-ring			
39 1 Ram			
40 1 Retaining Ring			
41 1 O-ring			
42 1 Y-ring			
43 1 Retaining Ring			
44 1 Washer			
45 1 O-ring			
46 1 O-ring Retaining			
47 1 Bush			
48 1 Piston Rod			
49 1 O-ring			
50 1 Cylinder			
51 2 Seal Ring			
53 1 O-ring			
Release Valve Kit			
No. 527914 includes:			
16 1 Ball			
18 1 O-ring			
31 1 Knob			
32 1 Pin			
33 1 Release Rod			
Reservoir Kit			
No. 527915 includes:			
37 1 Reservoir			
51 2 Seal Ring			
52 1 Cylinder Nut			
53 1 O-ring			
Saddle			
No. 527902 includes:			
101 1 Saddle			
Saddle Angle Kit			
No. 527905 includes:			
87 1 Screw			
97 1 Washer			
100 1 Containing Angle			
Saddle Level Arms Kit			
No. 527909 includes:			
34 2 Bolt			
65 2 Nut			
66 2 Lock Washer			
68 2 Long Link Rod			
69 2 Snap Ring			
Saddle Pivot Base Kit			
No. 527908 includes:			
69 2 Snap Ring			
81 1 Axle			
84 1 Saddle Base			
85 1 Axle			
86 2 Snap Ring			
Seal Kit			
No. 527912 includes:			
8 1 Wiper			
9 1 Back-up Ring			
10 1 O-ring			
13 1 Seal Ring			
18 2 O-ring			
21 1 Seal Ring			
24 1 Seal Ring			
27 2 O-ring			
36 1 Oil Fill Plug			
38 1 O-ring			
40 1 Retaining Ring			
41 1 O-ring			
42 1 Y-ring			
43 1 Retaining Ring			
44 1 Washer			
45 1 O-ring			
46 1 O-ring Retaining			
49 1 O-ring			
51 2 Seal Ring			
53 1 O-ring			

Safety Precautions



WARNING: To prevent personal injury and/or property damage,



- Study, understand, and follow all instructions before operating this device. If the operator cannot read or understand these operating instructions and safety precautions, they must be read and discussed in the operator's native language.



- Wear eye protection that meets ANSI Z87.1 and OSHA standards.
- Use only on hard, level surfaces.
- Inspect the jack before each use; do not use the jack if it is damaged, altered, or in poor condition.



- No alterations shall be made to this product unless approved by OTC. If a modification is needed, contact OTC Technical Services.
- Use of this product is limited to the removal, installation, and transportation in the lowered position of only automotive or truck transmissions.
- Do not exceed the rated capacity of 1,000 lbs. (500 kg).
- Adequately support the vehicle before starting repairs.
- Stay out from underneath the load at all times.
- Secure the load to the jack.
- Lower the jack slowly and carefully while watching the position of the load.
- **SLOWLY AND CAREFULLY** move the jack around corners.
- Use only approved hydraulic fluid (Chevron AW Hydraulic Oil MV or equivalent). The use of alcohol or hydraulic brake fluid could damage seals and result in jack failure.

Operating Instructions

1. Position the jack under the transmission.
2. Close the control valve.
3. Operate the pump handle to raise the boom and align the mounting plate with the transmission.
4. Remove the transmission according to the instructions in the vehicle service manual.
5. Position the transmission on the mounting plate, resting against the angle plates.
 - The mounting plate may be tilted forward and backward by turning the tilt knob.
 - The mounting plate may be tilted side-to-side by adjusting the two vertical hex head cap screws.
6. Secure the transmission to the mounting plate.
7. Lower the load by slowly opening the control valve. The control valve regulates how fast the boom is lowered.

Preventive Maintenance

IMPORTANT: Dirt is the greatest single cause of failure in hydraulic units. Keep the jack clean and well lubricated to prevent foreign matter from entering the system. If the jack has been exposed to rain, snow, sand, or grit, it must be cleaned before it is used.

1. Store the jack in a well-protected area where it will not be exposed to corrosive vapors, abrasive dust, or any other harmful element.
2. Regularly lubricate the moving parts.
3. Replace the oil in the reservoir at least once per year. To check the oil level, place the jack on level ground and lower the lift arm completely. Remove the filler plug. The oil level should be within 3/8" of the filler plug hole. If necessary, add approved anti-wear hydraulic jack oil, and install the filler plug again. **IMPORTANT: Use only approved hydraulic fluid (Chevron AW Hydraulic Oil MV or equivalent). The use of alcohol or hydraulic brake fluid could damage seals and result in jack failure.**
4. Inspect the jack before each use. Take corrective action if any of the following problems are found:
 - a. Cracked or damaged housing
 - b. Excessive wear, bending, or other damage
 - c. Leaking hydraulic fluid
 - d. Scored or damaged piston rod
 - e. Malfunctioning swivel heads or adjusting screws
 - f. Loose hardware
 - g. Modified or altered equipment

Troubleshooting Guide

Repair procedures must be performed in a dirt-free environment by qualified personnel who are familiar with this equipment.

Trouble	Cause	Solution
Jack does not lift	1. Release valve is open 2. Low/no oil in reservoir 3. Air-locked system 4. Load is above capacity of jack 5. Delivery valve and/or bypass valve not working correctly 6. Packing worn out or defective	1. Close release valve. 2. Fill with oil and bleed system. 3. Bleed system. 4. Use correct equipment. 5. Clean to remove dirt or foreign matter. Replace oil. 6. Replace power unit.
Jack lifts only partially	1. Too much or not enough oil	1. Check oil level.
Jack advances slowly	1. Pump not working correctly 2. Leaking seals	1. Replace power unit. 2. Replace power unit.
Jack lifts load, but doesn't hold	1. Cylinder packing is leaking 2. Valve not working correctly (suction, delivery, release, or bypass) 3. Air-locked system	1. Replace power unit. 2. Inspect valves. Clean and repair seat surfaces. 3. Bleed system.
Jack leaks oil	1. Worn or damaged seals	1. Replace power unit.
Jack will not retract	1. Release valve is closed	1. Open or clean release valve.
Jack retracts slowly	1. Cylinder damaged internally 2. Link section is binding	1. Send jack to OTC authorized service center for repair. 2. Lubricate link section.