

**Application Charts &
Installation Instructions**
for:

**205101
205102
206629**

Mack

Mounting Plate Application Charts

(for OTC #1750A Diesel Engine Repair Stand)

Mounting Plate No.	Used On
206629	477 Scania, 672 Inline 6 (1980 - current), E6, E7, V8 1000
205101	672, 673, 675, & 711 Inline 6 (up to 1980)
205102	864, 865, & 866 V8



WARNING: To prevent personal injury,



- Wear eye protection that meets ANSI Z87.1 and OSHA standards.



- Tighten all mounting screws and bolts before starting work on the engine.

- Use only SAE Grade 8 (or Metric Grade 10.9) cap screws to mount the plate to the engine and to the engine repair stand.

Installation Instructions

1. Bolt the mounting plate to the engine as shown in one of the following application charts.
2. Find the engine's center of balance (or greatest concentration of weight). *Note: This is usually about two inches above the center of the crankshaft.* See Figure 1.
3. Attach side plates to the engine mounting adapter plate, but leave the cap screws and nuts loose.
4. Align the engine (with side plates attached to the adapter plate) with the universal mounting adapter plate. Raise or lower the engine until its center of balance is in-line with the rotating shaft of the engine stand.
5. Align the closest tapped holes in the universal mounting adapter plate with the holes in the side plates. Securely tighten the side plates to the engine mounting plate and to the universal mounting adapter plate on the engine stand.

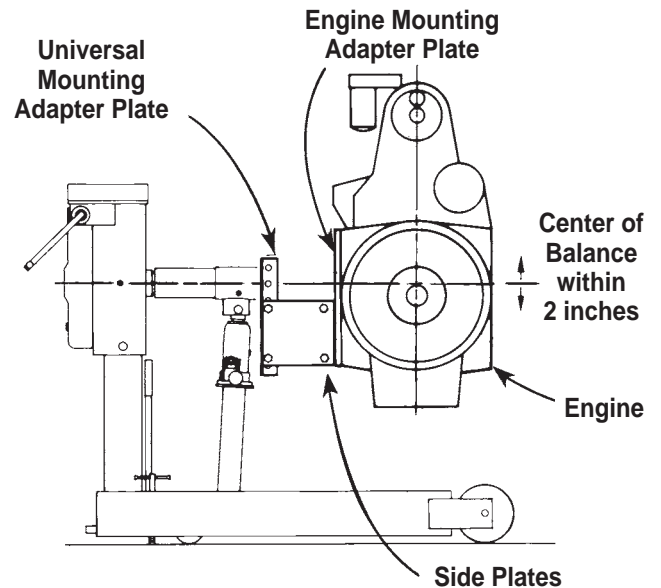


Figure 1

Application Charts & Installation Instructions

Mounting Plate #206629



WARNING: To prevent personal injury, use only SAE Grade 8 (or Metric Grade 10.9) cap screws to mount the plate to the engine and to the engine repair stand.

Fasteners	Description	Qty.	Part No.
Cap Screws	5/8-11 UNC x 1-1/2" lg.	3	19654
	5/8-11 UNC x 3-3/4" lg.	2	19814
	3/4-10 UNC x 2-1/2" lg.	1	104474
	M10 x 1.5 6g x 25 mm lg.	2	19849
	M12 x 1.75 6g x 30 mm lg.	1	19848
	M16 x 2 6g x 35 mm lg.	1	19847
	M16 x 2 6g x 100 mm lg.	2	211988
	M16 x 2 6g x 50 mm lg.	1	216907
Washers	3/8" Bolt Size	2	10231
	7/16" Bolt Size	1	10232
	5/8" Bolt Size	3	10235
	3/4" Bolt Size	1	10236
Spacers	1-1/16" O.D. x 13/16 I.D. x 1/2" lg.	1	202824
	1-1/4" O.D. x 21/32" I.D. x 2-1/16" lg.	2	206628

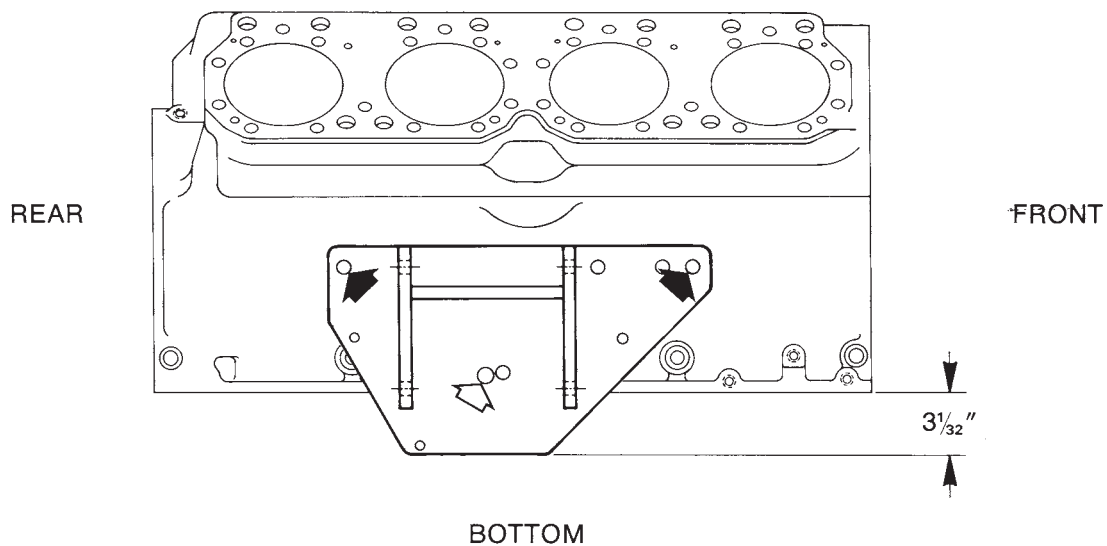
MODEL V8 1000

(1980 - current)

Right Side of Block

(Mounting Plate #206629)

TOP



(2) 5/8-11 UNC x 1 1/2" Lg. Cap Screw, Grade 8

(2) 5/8" Washer

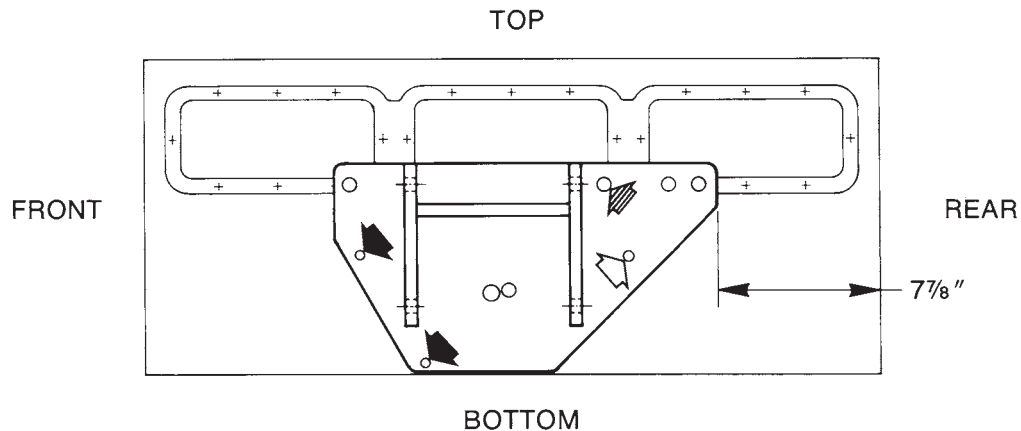


(1) 3/4-10 UNC x 2 1/2" Lg. Cap Screw, Grade 8

(1) 3/4" Washer

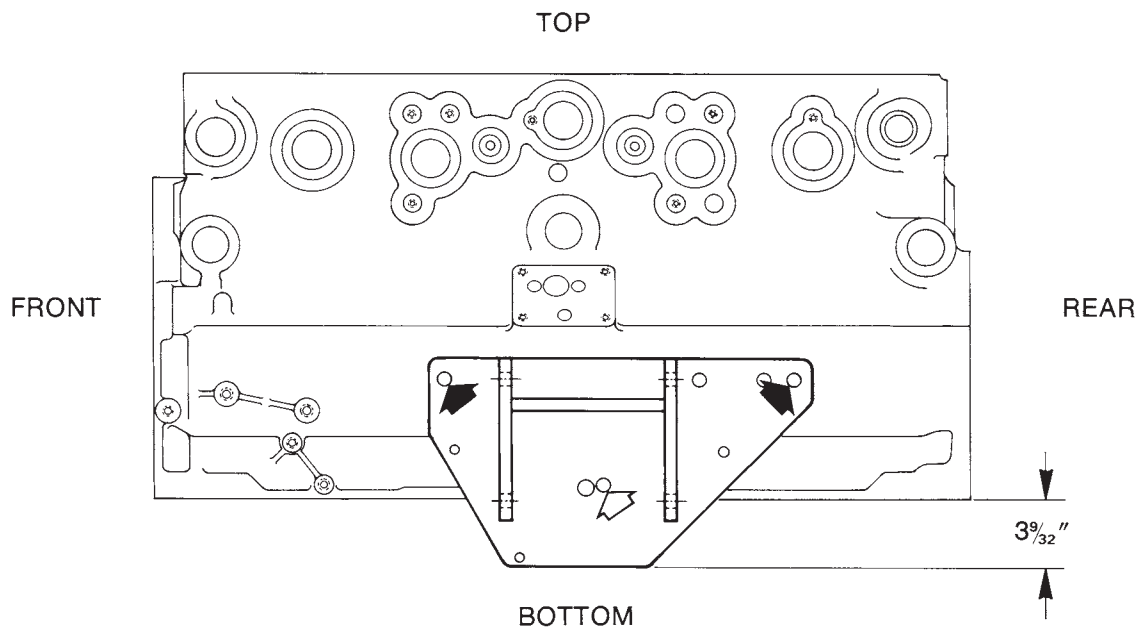
(1) 1 1/16" O.D. x 1/2" Lg. Spacer

Mack - Scania Model ETZ-477
Left Side of Block
 (Mounting Plate #206629)



- (2) M10 × 1.5 6g × 25mm Lg. Cap Screw, Grade 10.9
- (2) 3/8" Washer
- ◁ (1) M12 × 1.75 6g 30mm Lg. Cap Screw, Grade 10.9
- ◁ (1) 7/16" Washer
- (1) M16 × 2 6g × 35mm Lg. Cap Screw, Grade 10.9
- ◁ (1) 5/8" Washer

Model 672 & E6 or Model E7
 (1980 - current)
Left Side of Block
 (Mounting Plate #206629)



MODEL 672

MODEL E7

- (2) 5/8-11 UNC x 3-3/4" Lg. Cap Screw, Grade 8
- (2) 5/8" Washer
- (2) 1-1/4" O.D. x 2-1/16" Lg. Spacer
- ◁ (1) 5/8-11 UNC x 1-1/2" Lg. Cap Screw, Grade 8
- ◁ (1) 5/8" Washer

- (2) M16 x 2 x 100mm Lg. Cap Screw, Grade 10.9
- (2) 5/8" Washer
- (2) 1-1/4" O.D. x 2-1/16" Lg. Spacer
- ◁ (1) M16 x 2 x 50mm Lg. Cap Screw, Grade 10.9
- ◁ (1) 5/8" Washer

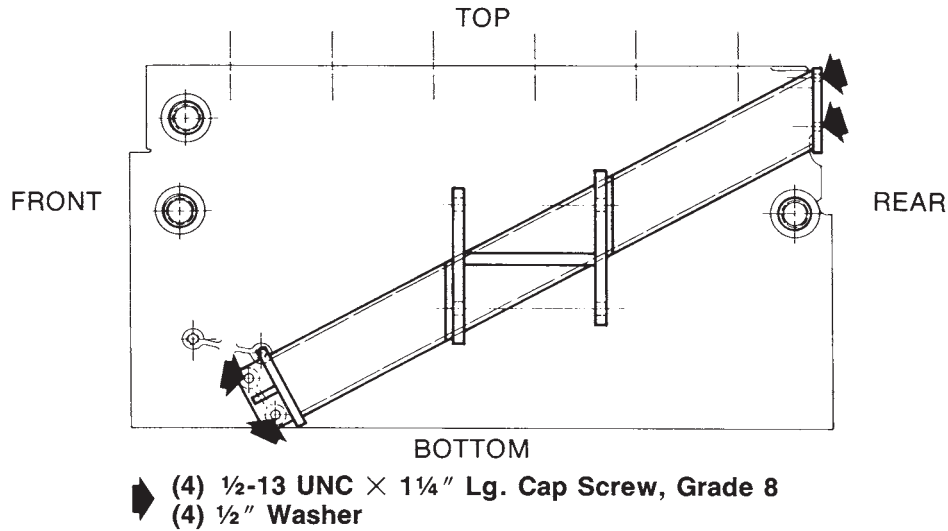
Application Charts & Installation Instructions

Mounting Plate #205101

Fasteners	Description	Qty.	Part No.
Cap Screws	1/2-13 UNC x 1-1/4" lg.	4	19811
Washers	1/2" Bolt Size	4	10586

WARNING: To prevent personal injury, use only SAE Grade 8 (or Metric Grade 10.9) cap screws to mount the plate to the engine and to the engine repair stand.

Model 672, 673, 675, or 711
(up to 1980 production)
Left Side of Block



Mounting Plate #205102

Fasteners	Description	Qty.	Part No.
Cap Screws	3/8-16 UNC x 1" lg.	3	19812
	7/16-14 UNC x 1" lg.	2	19874
Washers	3/8" Bolt Size	5	10231
	7/16" Bolt Size	3	10232

WARNING: To prevent personal injury, use only SAE Grade 8 (or Metric Grade 10.9) cap screws to mount the plate to the engine and to the engine repair stand.

Model 864, 865, or 866 V8
Left Side of Block

