

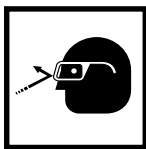
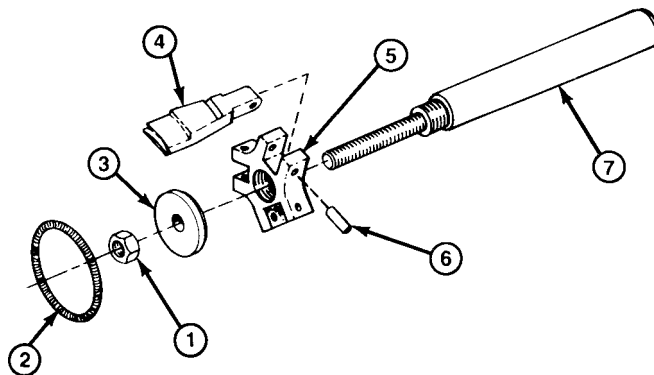
**Parts List &
Operating Instructions
for:**

7180

Universal Bearing Cup Installer

Capacity: 3-5/8" O.D. – 6-1/2" O.D.

Item No.	Part No.	No. Req'd	Description
1	10213	1	Hex Nut (5/8-18)
2	207561	1	Extension Spring
3	210583	1	Expander
4	52038	3	Jaw
5	305130	1	3 Way Head
6	209624	3	Pin
7	305129	1	Handle
8	209963	1	Decal (not shown)



WARNING: Wear eye protection that meets the requirements of ANSI Z87.1 and OSHA.

BEARING CUP INSTALLATION

1. Turn the expander to the left or right to adjust the installer jaw diameter to the approximate same size as the bearing cup inside diameter. See Figure 1 and 2.
2. Finger tighten the nut to prevent the expander from moving once the jaw diameter has been set.
3. Install the bearing cup. See Figure 3.

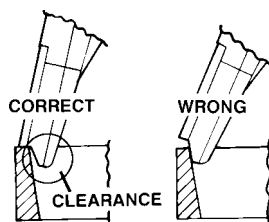


FIGURE 1

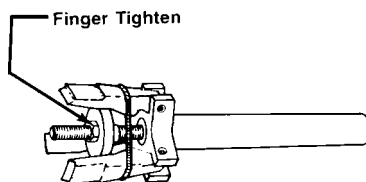


FIGURE 2

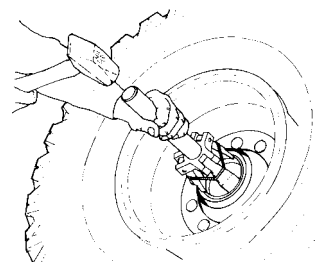


FIGURE 3

MAINTENANCE

Deburr the edges of the installer jaws as needed by drawing a file across the shoulders as shown.

