

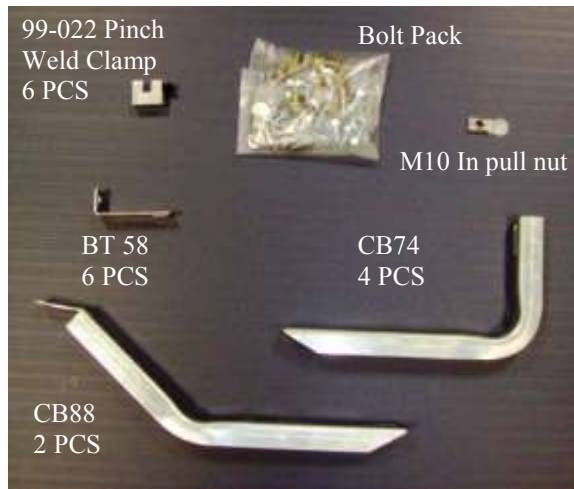
Tools required:

- 1/2" Standard socket
- 10mm socket
- 1/2" Wrench
- Drill with 3/8" nut driver
- 15mm socket
- 1/8" Allen wrench
- Vice Grip Pliers
- Flat Screw Driver
- Tape measure

**Thank you for choosing Owens Products.  
Proudly made in the USA.**

Painting is not necessary, it is made with UV protected plastic to resist fading and cracking

**No Drilling into Vehicle is Required**



In front of the rear wheels, there is a small plastic mud flap. This mud flap will need to be removed for the [running board](#) to fit properly. It is held on by (2) 6mm bolts and a small clip on the top. The clip needs to be popped loose with a flat head screw driver.



Measure from the Front wheel well back and make a mark on the pinch weld at 12 1/2", 34 1/4", and 57 3/4" on both sides. At each mark mount the pinch weld clamp, by tightening the set screws with 1/8" Allen wrench holding with pair of vise grips for leverage.

**Make sure set screws are as tight as possible.**

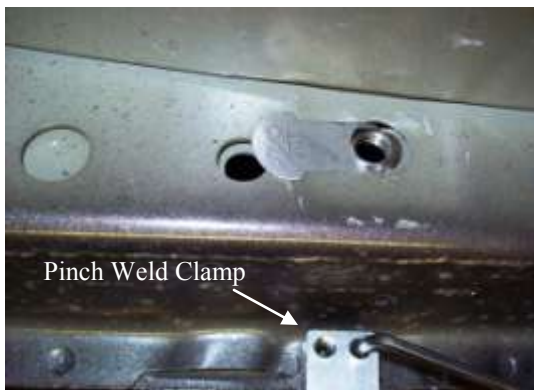
3)



At each pinch weld clamp attach one BT58 angle bracket as shown with a 5/16 bolt.

Location 1

4)

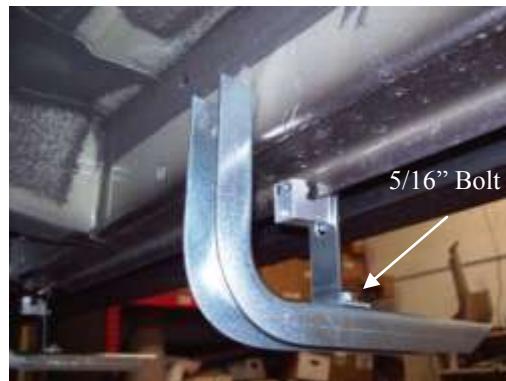


Location 2



As you look under the vehicle from the front wheel rearward you will see two factory holes with plugs at 12 1/2" and 34 1/4". Remove these plugs and insert in pull nut as shown. This is location *one* and *two* and is where the CB74 brackets will be attached.

5)



At location *one* and *two* attach a CB74 using a 10mm bolt threaded into the in pull nut and one 5/16" bolt and nut to the angle bracket. Tighten all bolts.



At 57 3/4" from front, insert in pull nut as shown for 3rd bracket position.

7)



At location attach a CB88 using a 10mm bolt threaded into the in pull nut and one 5/16" bolt and nut to the angle bracket. Tighten all bolts.



Apply foam tape and step tread as shown in picture. Center step tread between the ends of the board and keep close to outside edge.

**NOTE: If you are installing the step pads follow the instructions on the included IN453 instruction sheet.**



Position board between wheel wells for best fit. Install self drilling screws through brackets into the shoulder of the steel channel on the bottom of the board.

**Repeat all steps for opposite side.**

