

Tools required:

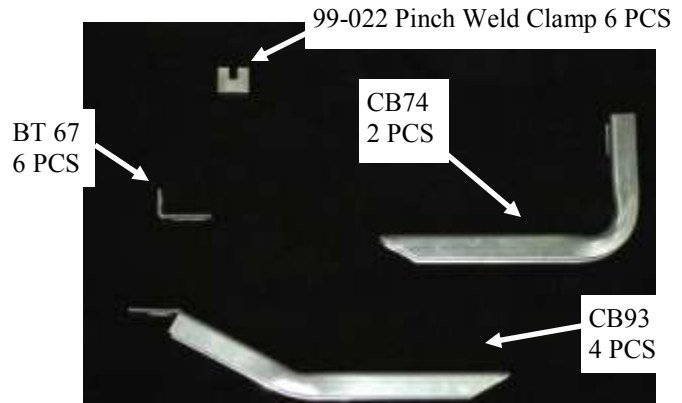
- 1/2" Standard socket
- 10mm socket
- 1/2" Wrench
- Drill with 3/8" nut driver
- 1/8" Allen wrench
- Vice Grip Pliers
- Flat Screw Driver
- Tape measure

Torque Specification:

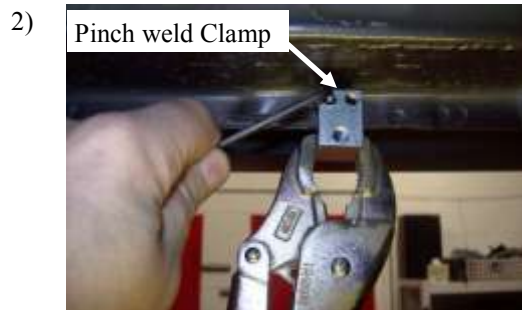
5/16" Bolts - 19 Ft Lbs.

**Thank you for choosing Owens Products.
Proudly made in the USA**

No Drilling into Vehicle is Required



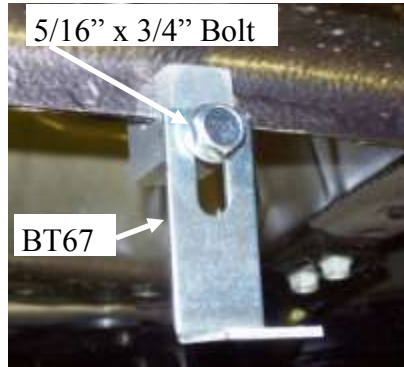
In front of the rear wheels, there is a small plastic mud flap. This flap will need to be removed for the [running board](#) to fit properly. It is held on by (2) 6mm bolts and a small clip on top. The clip needs to be popped loose with flat screwdriver. Remove bolts with 10mm socket.



Measure from the Front wheel well back and make a mark on the pinch weld at **20 3/4"**, **36 1/4"**, and **60.0"** on both sides. At each mark mount the pinch weld clamp, by tightening the set screws with 1/8" Allen wrench holding with pair of vise grips for leverage.

Make sure set screws are as tight as possible.

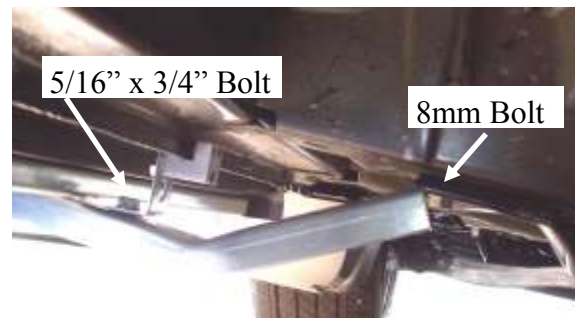
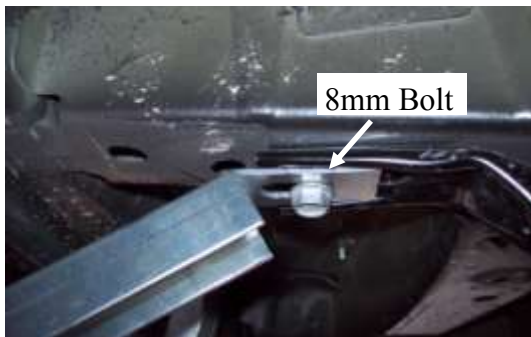
3)



At each pinch weld clamp attach one BT67 angle bracket as shown with a 5/16 x 3/4" bolt.

Location 1

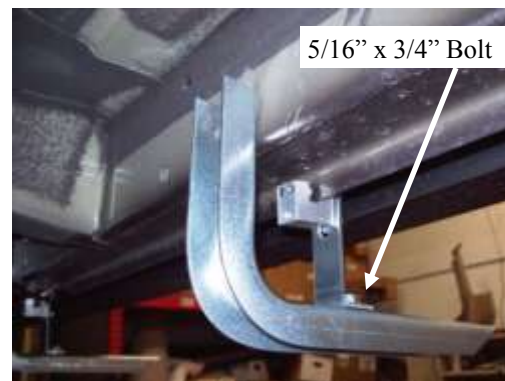
4)



As you look under the vehicle from the front wheel rearward at 20 3/4" locate the two bolts securing the fuel tank barrier bar, remove both bolts with 13mm socket place a CB93 bracket up to hole toward the out side of vehicle place the bolt removed through slot in CB93 hand tighten bolt. Using a 5/16" x 3/4" bolt through BT67 then through slot in CB93 and secure with nut. Tighten up the bolt into the nut but leave loose for now for adjustment later

Location 2

5)



At 36 1/4" remove the rubber plug in the rear of the rocker panel. Insert 5/16" X 1-1/2" bolt through washer then put bolt through CB74 bracket and thread into short re-enforcement nut. Slide nut into hole in rear of rocker panel as shown hand tighten bracket up to rear of rocker. Using a 5/16" x 3/4" bolt through BT67 then through slot in CB74

Location 3

6)



At 60" from front, insert 5/16" X 1-1/2" bolt through washer then put bolt through top tab of the CB93 bracket and thread into short re-enforcement nut. Slide nut into hole in frame then hand tighten as shown for 3rd bracket position.

7)



Attach a CB93 to the BT67 one 5/16" x 3/4" bolt and nut to the angle bracket. Hand tighten all bolts.

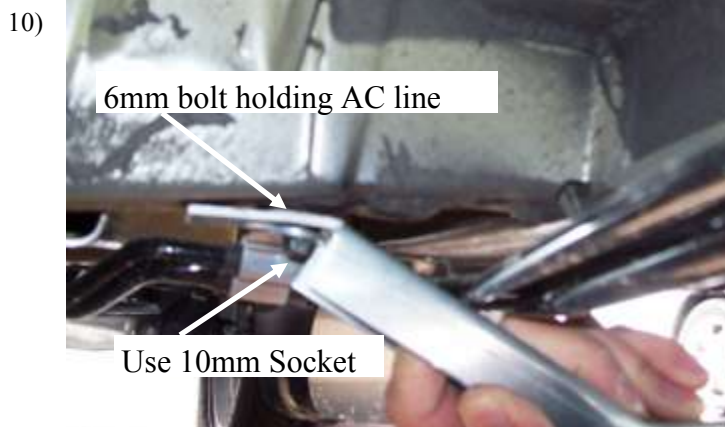


Position board between wheel wells front will touch back of the front mud flap. Pull board out so the rubber seal touches the front edge of board. Tighten all bolts on brackets once board is in correct position.



Now that brackets are all secure. Install self drilling screws through each bracket into the shoulder of the steel channel on the bottom of the board.

Passenger 1st Location Shown



As you look under the vehicle from the front wheel rearward at 20 3/4" locate the bolt securing air conditioning line bracket, remove the bolt with 10mm socket place a CB93 bracket up to hole place the bolt removed through a washer supplied then bolt through slot in CB93 hand tighten bolt. Using a 5/16" x 3/4" bolt through BT67 then through slot in CB93 and secure with nut. Tighten up the bolt into the nut but leave loose for now for adjustment later

- 11)
Passenger 2nd and 3rd position same as the driver side installation.



Premier

IN563

2013 - C INFINITY QX60
BRKT KIT 10-1274

