

EGR DIFFERENTIAL PRESSURE SENSOR

050741



Description:	EGR DIFFERENTIAL PRESSURE SENSOR
SKU:	050741
OEM:	4921728
Product Group:	ENGINE PARTS
Product Class:	ENGINE SENSORS, NON EGR-RELATED
UPC Code:	193807272463
Sell Pack:	1 EA
Weight:	0.49 LBS
Package Dimensions (LxWxH):	3 x 3 x 4 inches
Warranty:	2 Years

**Details:**

EGR Differential Pressure Sensor Pressure Kit
Cummins Engine Multiple Use application
2.35in Length

E-Catalog Pages:

Catalog Page	Description
--------------	-------------

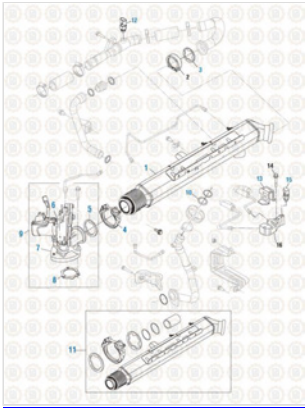
Copyright © 2020 PAI Industries, Inc.

All rights reserved. All content is property of PAI Industries, Inc, and may not be reproduced or redistributed in any form.

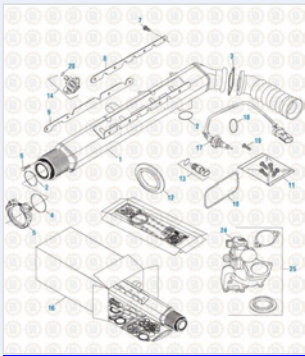
Any reference to OEM names or OEM product identification numbers/descriptions/model numbers is for identification only and does not indicate that it is an OEM part. PAI is not affiliated with Mack Truck, Inc.®, Volvo®, Fuller®, Cummins®, Eaton®, Rockwell®, Caterpillar®, Freightliner®, Hendrickson®, Kenworth®, Detroit Diesel®, International®, Peterbilt®, or Dana®. All Manufacturer's names, numbers, symbols and descriptions are used for reference only. It is not implied that any part listed is the product of these manufacturers.

EGR DIFFERENTIAL PRESSURE SENSOR

050741



Cummins Engine 2017
EGR Cooler - L10 / M11 / ISM Series



Cummins Engine 2017
EGR Cooler - ISX Series



Sensor Catalog 2019
Dual Function / EGR Sensors - Sensor Catalog



Sensor Catalog 2019
Differential Pressure Sensors - Sensor Catalog

Component Of:		
SKU	Image	Description
050742		EGR DIFFERENTIAL PRESSURE SENSOR

Cross Reference:	
Manufacturer	OEM Number
CUMMINS	4921728

Copyright © 2020 PAI Industries, Inc.
All rights reserved. All content is property of PAI Industries, Inc, and may not be reproduced or redistributed in any form.

Any reference to OEM names or OEM product identification numbers/descriptions/model numbers is for identification only and does not indicate that it is an OEM part. PAI is not affiliated with Mack Truck, Inc.®, Volvo®, Fuller®, Cummins®, Eaton®, Rockwell®, Caterpillar®, Freightliner®, Hendrickson®, Kenworth®, Detroit Diesel®, International®, Peterbilt®, or Dana®. All Manufacturer's names, numbers, symbols and descriptions are used for reference only. It is not implied that any part listed is the product of these manufacturers.