

THRUST WASHER

GWA-5983



Description: THRUST WASHER
SKU: GWA-5983
OEM: 223KD316A
Product Group: TRANSMISSION
Product Class: GEARS, SHAFTS, CLUTCHES
UPC Code: 193807236755
Sell Pack: 2 EA
 (Available to buy in increments of 2)
Weight: 0.41 LBS
Warranty: 2 Years

Details:

Thrust Washer
 5 Required
 22 Gear Teeth
 3.666 O.D. x 2.477in I.D. x .158in Thickness

E-Catalog Pages:

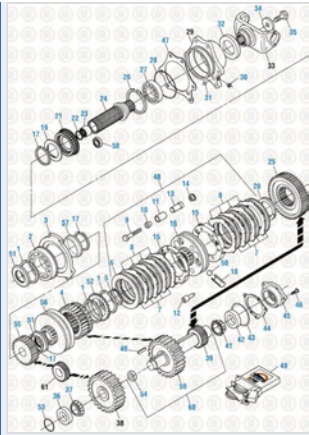
Catalog Page	Description
	<p>Drive Train 2016 Main Case Components - T2080B</p>

Copyright © 2020 PAI Industries, Inc.
 All rights reserved. All content is property of PAI Industries, Inc. and may not be reproduced or redistributed in any form.

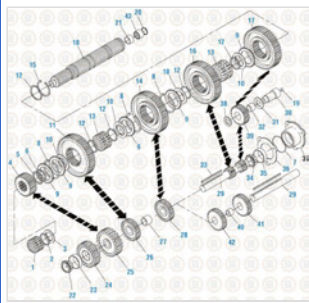
Any reference to OEM names or OEM product identification numbers/descriptions/model numbers is for identification only and does not indicate that it is an OEM part. PAI is not affiliated with Mack Truck, Inc.®, Volvo®, Fuller®, Cummins®, Eaton®, Rockwell®, Caterpillar®, Freightliner®, Hendrickson®, Kenworth®, Detroit Diesel®, International®, Peterbilt®, or Dana®. All Manufacturer's names, numbers, symbols and descriptions are used for reference only. It is not implied that any part listed is the product of these manufacturers.

THRUST WASHER

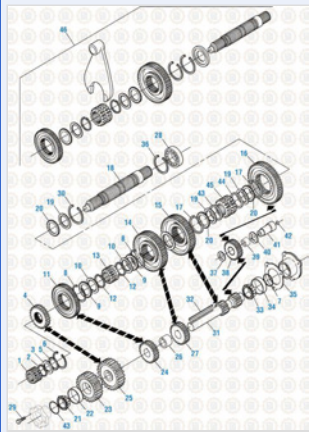
GWA-5983



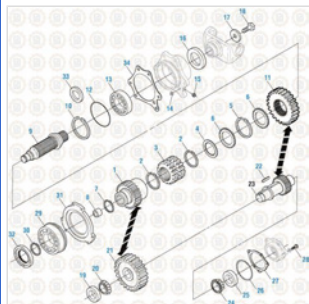
Drive Train 2016
Rear Case Components - T2080B



Drive Train 2016
Main Case Components - T2080, T2090 and T2100



Drive Train 2016
Main Case Components - Original Mainshaft Design - T2050



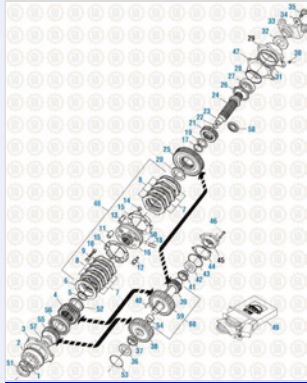
Drive Train 2016
Rear Case Components - T2060 & T2070

Copyright © 2020 PAI Industries, Inc.
All rights reserved. All content is property of PAI Industries, Inc. and may not be reproduced or redistributed in any form.

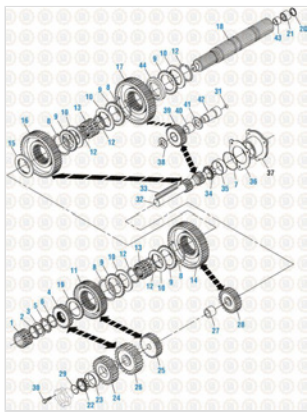
Any reference to OEM names or OEM product identification numbers/descriptions/model numbers is for identification only and does not indicate that it is an OEM part. PAI is not affiliated with Mack Truck, Inc.®, Volvo®, Fuller®, Cummins®, Eaton®, Rockwell®, Caterpillar®, Freightliner®, Hendrickson®, Kenworth®, Detroit Diesel®, International®, Peterbilt®, or Dana®. All Manufacturer's names, numbers, symbols and descriptions are used for reference only. It is not implied that any part listed is the product of these manufacturers.

THRUST WASHER

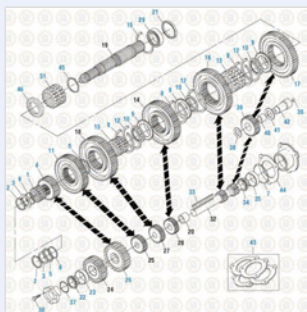
GWA-5983



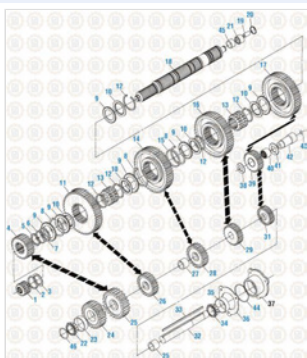
Drive Train 2016
Rear Case Components - T2130 and T2180



Drive Train 2016
Main Case Components - T2060 & T2070



Drive Train 2016
Main Case Components - T2060A



Drive Train 2016
Main Case Components - T2130 and T2180

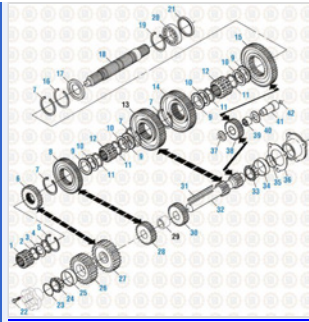
Copyright © 2020 PAI Industries, Inc.

All rights reserved. All content is property of PAI Industries, Inc. and may not be reproduced or redistributed in any form.

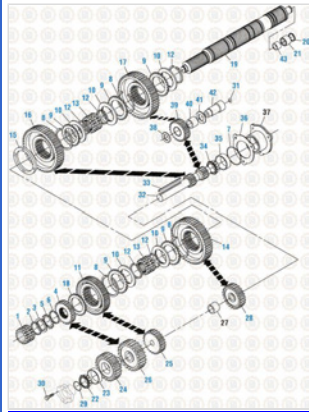
Any reference to OEM names or OEM product identification numbers/descriptions/model numbers is for identification only and does not indicate that it is an OEM part. PAI is not affiliated with Mack Truck, Inc.®, Volvo®, Fuller®, Cummins®, Eaton®, Rockwell®, Caterpillar®, Freightliner®, Hendrickson®, Kenworth®, Detroit Diesel®, International®, Peterbilt®, or Dana®. All Manufacturer's names, numbers, symbols and descriptions are used for reference only. It is not implied that any part listed is the product of these manufacturers.

THRUST WASHER

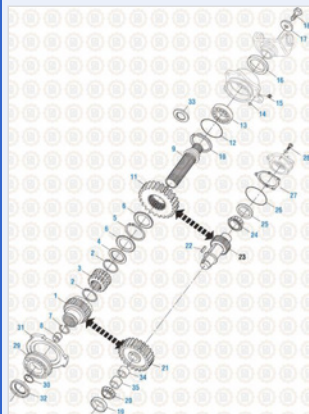
GWA-5983



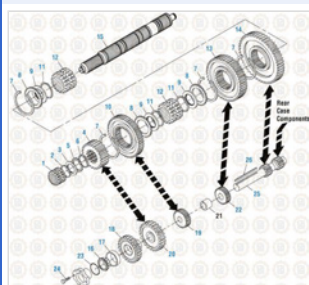
Drive Train 2016
Main Case Components - Current Mainshaft Design - T2050



Drive Train 2016
Main Case Components - T2070 A & C



Drive Train 2016
Rear Case Components - T2070 A & C



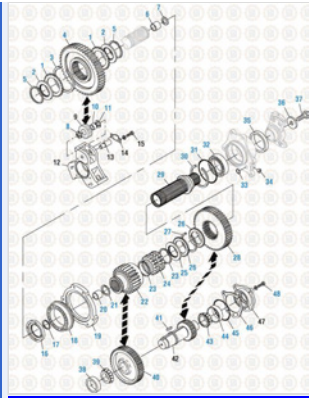
Drive Train 2016
Main Case Components - Long Rear Case, Multi-Speed Reverse, Rear Mounted Main Shifter - T2070 B & D

Copyright © 2020 PAI Industries, Inc.
All rights reserved. All content is property of PAI Industries, Inc, and may not be reproduced or redistributed in any form.

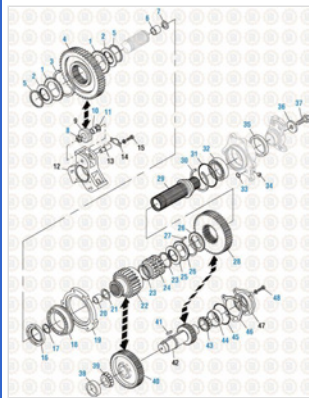
Any reference to OEM names or OEM product identification numbers/descriptions/model numbers is for identification only and does not indicate that it is an OEM part. PAI is not affiliated with Mack Truck, Inc.®, Volvo®, Fuller®, Cummins®, Eaton®, Rockwell®, Caterpillar®, Freightliner®, Hendrickson®, Kenworth®, Detroit Diesel®, International®, Peterbilt®, or Dana®. All Manufacturer's names, numbers, symbols and descriptions are used for reference only. It is not implied that any part listed is the product of these manufacturers.

THRUST WASHER

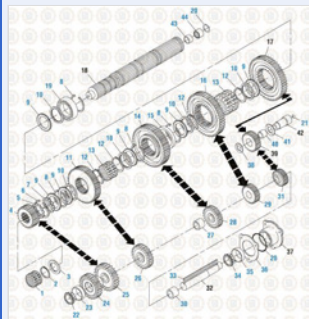
GWA-5983



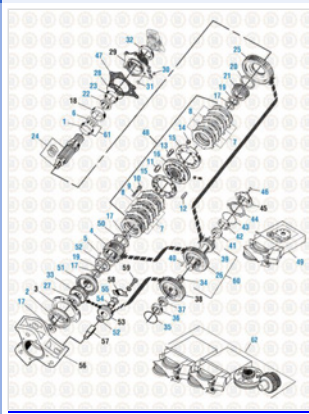
Drive Train 2016
Rear Case Components - T2070 B & D



Drive Train 2016
Rear Case Components - T2070 B & D



Drive Train 2016
Main Case Components - T2110 B and D






Drive Train 2016
Rear Case Components - T2110 B and D

Copyright © 2020 PAI Industries, Inc.
All rights reserved. All content is property of PAI Industries, Inc. and may not be reproduced or redistributed in any form.

Any reference to OEM names or OEM product identification numbers/descriptions/model numbers is for identification only and does not indicate that it is an OEM part. PAI is not affiliated with Mack Truck, Inc.®, Volvo®, Fuller®, Cummins®, Eaton®, Rockwell®, Caterpillar®, Freightliner®, Hendrickson®, Kenworth®, Detroit Diesel®, International®, Peterbilt®, or Dana®. All Manufacturer's names, numbers, symbols and descriptions are used for reference only. It is not implied that any part listed is the product of these manufacturers.

THRUST WASHER

GWA-5983

Component Of:		
SKU	Image	Description
GKT-2502	.	MAINSHAFT KIT
GBK-5942		BEARING AND SEAL KIT
GBK-6153	.	BEARING AND SEAL KIT
GBK-6565		BEARING AND SEAL KIT
GBK-6573	.	BEARING AND SEAL KIT
GBK-6637		BEARING AND SEAL KIT
GBK-6685	.	BEARING AND SEAL KIT
GBK-8955	.	BEARING AND SEAL KIT
GBK-8956	.	BEARING AND SEAL KIT
GBK-8957	.	BEARING AND SEAL KIT
GBK-8958	.	BEARING AND SEAL KIT
GBK-8963	.	BEARING AND SEAL KIT

Cross Reference:	
Manufacturer	OEM Number
MACK	233KD36
MACK	223KD316
MACK	223KD316A
MACK	25500919

Copyright © 2020 PAI Industries, Inc.

All rights reserved. All content is property of PAI Industries, Inc. and may not be reproduced or redistributed in any form.

Any reference to OEM names or OEM product identification numbers/descriptions/model numbers is for identification only and does not indicate that it is an OEM part. PAI is not affiliated with Mack Truck, Inc.®, Volvo®, Fuller®, Cummins®, Eaton®, Rockwell®, Caterpillar®, Freightliner®, Hendrickson®, Kenworth®, Detroit Diesel®, International®, Peterbilt®, or Dana®. All Manufacturer's names, numbers, symbols and descriptions are used for reference only. It is not implied that any part listed is the product of these manufacturers.