

SPRING

EF16610



Description: SPRING
SKU: EF16610
OEM: 15918
Product Group: TRANSMISSION
Product Class: TRANSMISSION COVERS, SHIFTERS & PARTS
UPC Code: 193807120085
Sell Pack: 5 EA
 (Available to buy in increments of 5)
Weight: 0.08 LBS
Warranty: 1 Year

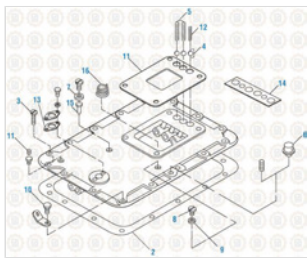


Details:

Spring
 Fuller Transmission application

E-Catalog Pages:

Catalog Page	Description
--------------	-------------



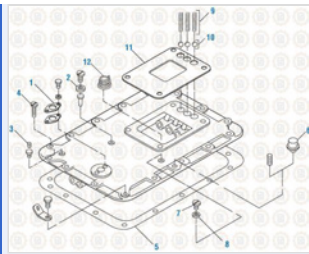
Web Electronic
 Cover Components - Fuller Transmission

Copyright © 2020 PAI Industries, Inc.
 All rights reserved. All content is property of PAI Industries, Inc, and may not be reproduced or redistributed in any form.

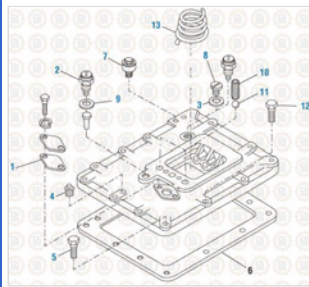
Any reference to OEM names or OEM product identification numbers/descriptions/model numbers is for identification only and does not indicate that it is an OEM part. PAI is not affiliated with Mack Truck, Inc.®, Volvo®, Fuller®, Cummins®, Eaton®, Rockwell®, Caterpillar®, Freightliner®, Hendrickson®, Kenworth®, Detroit Diesel®, International®, Peterbilt®, or Dana®. All Manufacturer's names, numbers, symbols and descriptions are used for reference only. It is not implied that any part listed is the product of these manufacturers.

SPRING

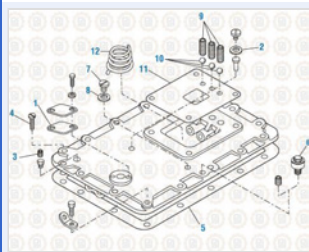
EF16610



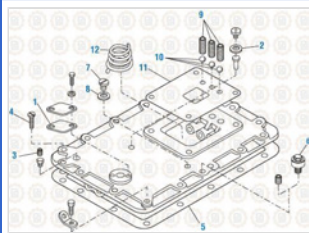
Web Electronic
Cover Components - Fuller Transmission



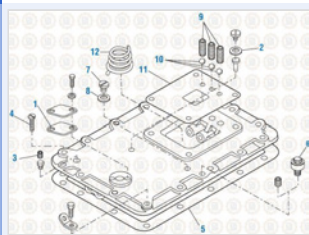
Web Electronic
Cover Components - Fuller Transmission



Drive Train 2016
Cover Components - RT/RTO/RTOO/RTLO 14613 and 14813



Drive Train 2016
Cover Components - RTLO 16618



Web Electronic
Cover Components - Fuller Transmission

Component Of:

SKU	Image	Description
EF26730	.	SMALL PARTS KIT
EF61520	.	SMALL PARTS KIT
EF65140	.	BEARING AND SEAL KIT

Copyright © 2020 PAI Industries, Inc.
All rights reserved. All content is property of PAI Industries, Inc, and may not be reproduced or redistributed in any form.

Any reference to OEM names or OEM product identification numbers/descriptions/model numbers is for identification only and does not indicate that it is an OEM part. PAI is not affiliated with Mack Truck, Inc.®, Volvo®, Fuller®, Cummins®, Eaton®, Rockwell®, Caterpillar®, Freightliner®, Hendrickson®, Kenworth®, Detroit Diesel®, International®, Peterbilt®, or Dana®. All Manufacturer's names, numbers, symbols and descriptions are used for reference only. It is not implied that any part listed is the product of these manufacturers.

SPRING

EF16610

EF65450	.	BEARING AND SEAL KIT
EF65460	.	BEARING AND SEAL KIT
EF65470	.	BEARING AND SEAL KIT
EF65530	.	BEARING AND SEAL KIT
EF65570	.	BEARING AND SEAL KIT
EF65580	.	BEARING AND SEAL KIT
EF65750	.	BEARING AND SEAL KIT
EF65860	.	BEARING AND SEAL KIT
EF65870	.	BEARING AND SEAL KIT
EF65890	.	BEARING AND SEAL KIT
EF65980	.	BEARING AND SEAL KIT
EF66000	.	BEARING AND SEAL KIT
EF66020	.	BEARING AND SEAL KIT
EF66190	.	BEARING AND SEAL KIT
EF66260	.	BEARING AND SEAL KIT
EF67790	.	BEARING AND SEAL KIT
EF68690	.	BEARING AND SEAL KIT
900439	.	SMALL PARTS KIT
900451	.	BEARING AND SEAL KIT
900454	.	BEARING AND SEAL KIT
900455	.	BEARING AND SEAL KIT
900456	.	BEARING AND SEAL KIT
900459	.	BEARING AND SEAL KIT

Cross Reference:

Manufacturer	OEM Number
FULLER	15918
NAVISTAR	66286H

Copyright © 2020 PAI Industries, Inc.

All rights reserved. All content is property of PAI Industries, Inc, and may not be reproduced or redistributed in any form.

Any reference to OEM names or OEM product identification numbers/descriptions/model numbers is for identification only and does not indicate that it is an OEM part. PAI is not affiliated with Mack Truck, Inc.®, Volvo®, Fuller®, Cummins®, Eaton®, Rockwell®, Caterpillar®, Freightliner®, Hendrickson®, Kenworth®, Detroit Diesel®, International®, Peterbilt®, or Dana®. All Manufacturer's names, numbers, symbols and descriptions are used for reference only. It is not implied that any part listed is the product of these manufacturers.