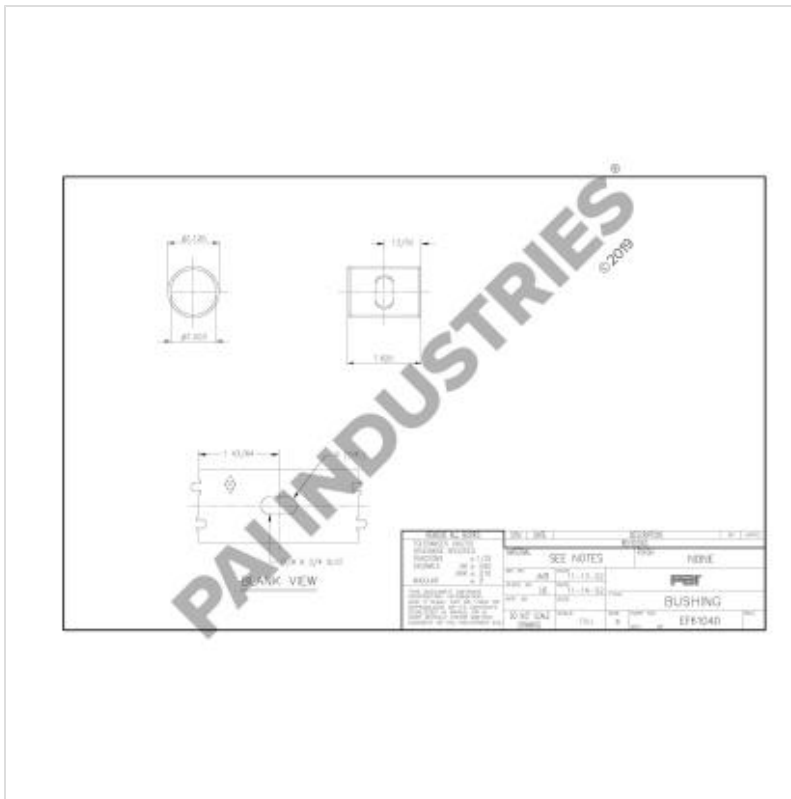


BUSHING

EF61040



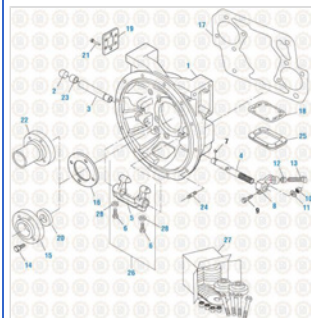
Description: BUSHING
SKU: EF61040
OEM: 8677
Product Group: CLUTCH & CLUTCH RELEASE PARTS
Product Class: CLUTCH RELEASE PARTS (BELL HOUSING RELATED)
UPC Code: 193807110277
Sell Pack: 5 EA
 (Available to buy in increments of 5)
Weight: 0.43 LBS
Warranty: 1 Year

Details:

Clutch Release Shaft Bushing
 Fuller FS 5406/ FS 4205A Transmission application

E-Catalog Pages:

Catalog Page	Description
--------------	-------------

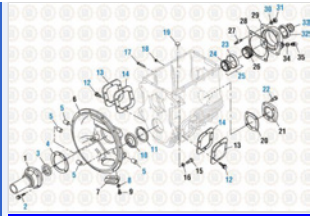


Drive Train 2016
 Fuller Bell Housing Components - Fuller Transmission

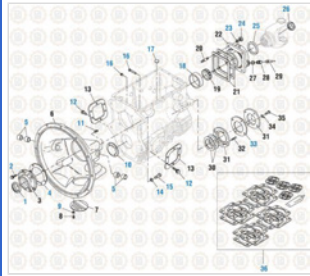
Copyright © 2020 PAI Industries, Inc.
 All rights reserved. All content is property of PAI Industries, Inc. and may not be reproduced or redistributed in any form.
 Any reference to OEM names or OEM product identification numbers/descriptions/model numbers is for identification only and does not indicate that it is an OEM part. PAI is not affiliated with Mack Truck, Inc.®, Volvo®, Fuller®, Cummins®, Eaton®, Rockwell®, Caterpillar®, Freightliner®, Hendrickson®, Kenworth®, Detroit Diesel®, International®, Peterbilt®, or Dana®. All Manufacturer's names, numbers, symbols and descriptions are used for reference only. It is not implied that any part listed is the product of these manufacturers.

BUSHING

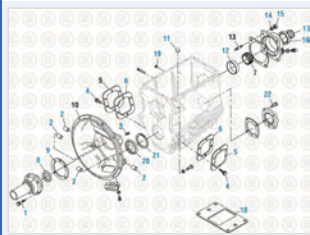
EF61040



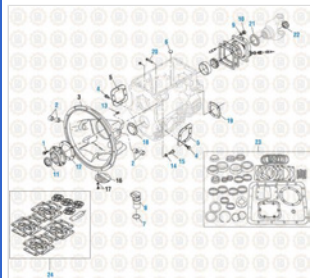
Drive Train 2016
Case Assembly - FS 4005



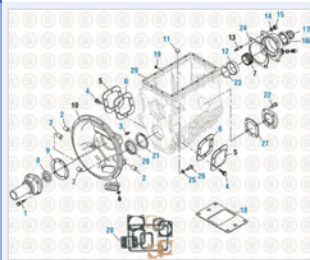
Drive Train 2016
Case Assembly - FS 5106



Drive Train 2016
Case Assembly - FS 4205A



Drive Train 2016
Case Assembly - FS 5406 / FS 6205A / FS 6206A / FS 6306A /FS-FSO 6



Drive Train 2016
Case Assembly - FS 5005A/C and FS 5205A

Component Of:

SKU	Image	Description
900715		CLUTCH HOUSING ASSEMBLY

Cross Reference:

Copyright © 2020 PAI Industries, Inc.
All rights reserved. All content is property of PAI Industries, Inc, and may not be reproduced or redistributed in any form.

Any reference to OEM names or OEM product identification numbers/descriptions/model numbers is for identification only and does not indicate that it is an OEM part. PAI is not affiliated with Mack Truck, Inc.®, Volvo®, Fuller®, Cummins®, Eaton®, Rockwell®, Caterpillar®, Freightliner®, Hendrickson®, Kenworth®, Detroit Diesel®, International®, Peterbilt®, or Dana®. All Manufacturer's names, numbers, symbols and descriptions are used for reference only. It is not implied that any part listed is the product of these manufacturers.

BUSHING

EF61040

Manufacturer	OEM Number
FULLER	230544
FULLER	8677
MACK	3088-230544
MACK	3088-8677
MACK	4333-270730C1
NAVISTAR	270730C1

Copyright © 2020 PAI Industries, Inc.

All rights reserved. All content is property of PAI Industries, Inc, and may not be reproduced or redistributed in any form.

Any reference to OEM names or OEM product identification numbers/descriptions/model numbers is for identification only and does not indicate that it is an OEM part. PAI is not affiliated with Mack Truck, Inc.®, Volvo®, Fuller®, Cummins®, Eaton®, Rockwell®, Caterpillar®, Freightliner®, Hendrickson®, Kenworth®, Detroit Diesel®, International®, Peterbilt®, or Dana®. All Manufacturer's names, numbers, symbols and descriptions are used for reference only. It is not implied that any part listed is the product of these manufacturers.