

9 PC Dent & Seal Puller Set

Item Number W2029DB

OWNER'S MANUAL

SAFETY INFORMATION

Please read this entire manual carefully before attempting to assemble or operate this product.



WARNING

Improper installation, operation, or maintenance of this product could result in serious injury and property damage. Whenever using tools, basic safety precautions should always be followed to reduce the risk of property damage or personal injury. Keep tools out of reach of children and never allow children to handle equipment or tools. Keep work area clear from clutter and other work hazards. Do not use this product in unsafe work conditions. Study, thoroughly understand, and follow all safety precautions and operating instructions before using your dent & seal puller set. If the operator cannot read English, operating instructions and safety precautions must be read and discussed in the operator's native language.



- Do not modify Slide Hammer to perform a task other than what it was designed for. Do not use anything other than the included hammer with this tool.
- Assemble only according to instructions. Improper assembly can create hazards.
- This product is not a toy. Do not allow children to play with or near this item.

- Maintain product labels and nameplates. These carry important safety information. If unreadable or missing, contact Performance Tool for a replacement.
- Performance Tool is not responsible for vehicle damage (including cosmetic damage) due to improper use or lack of experience for using this type of tool.

ASSEMBLY INSTRUCTIONS

- Thread jam nut completely onto shaft.
- Thread handle onto shaft until it reaches jam nut.
- Follow instructions below for applications.

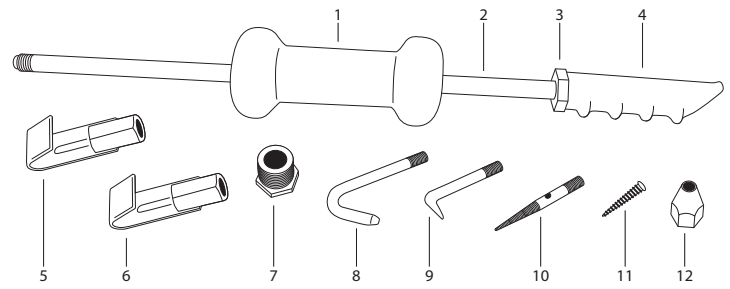
OPERATION (DENT PULLING)

- Drill a 1/8" hole into the center of the dent.
 - Place the Small Access Screw through the screw holding adapter.
 - Thread the adapter and screw onto the puller shaft, tighten securely
 - Thread the Screw into the drilled hole using the body and handle for the dent puller.
 - Push the slide hammer weight forward towards the work piece, then forcefully pull it back towards the jam nut. Repeat and adjust force as needed.
- CAUTION!** Do not use excessive force when pulling dents. Sheet metal can easily bend or tear.

OPERATION (HOOK/THREAD PULLING)

- Identify the lip or creased area you will be inserting the puller attachment hook on or into.
- Thread the puller hook onto the end of the accessory holder, thread the assembly on to the puller shaft.
- Drill a small hole large enough for the hook to fit into, align the hook with the crease.
- Push the slide hammer weight forward towards the work piece, then gently as needed pull it back towards the jam nut.

PACKAGE CONTENTS



#	Description	Qty.
1	Hammer	1
2	Shaft	1
3	Jam Nut	1
4	Handle	1
5	Small Panel Puller	1
6	Large Panel Puller	1
7	Attachment Accessory Holder	1
8	Puller Attachment Hook	1
9	Pull Attachment Hook	1
10	Small Access Dent Puller Screw	1
11	Small Access Dent Puller Screw	1
12	Screw Holder	1

IMPORTANT SAFETY INFORMATION

Read the ENTIRE IMPORTANT SAFETY INFORMATION section at the beginning of this document including all text under subheadings therein before set up or use of this product.

- Wear ANSI-approved safety goggles

and heavy-duty work gloves during assembly and use.

- Inspect before every use; do not use if parts are damaged.
- Do not use on anything other than its intended purpose.

1

OPERATION (PANEL PULLING)

- Thread the Panel hook puller attachment onto the slide hammer shaft.
- Select the edge or panel you intent to pull, place the molded steel jaw on the edge of the object to be pulled.
- Push the slide hammer weight forward towards the work piece, then forcefully pull it back towards the jam nut. Repeat and adjust force as needed.
- Repeat Step 3 until object has been pulled to the desired position.

MAINTENANCE & SERVICING

CLEANING, MAINTENANCE, AND LUBRICATION

1. BEFORE EACH USE, inspect the general condition of the tool. Check for:

- Loose hardware,
- Misalignment or binding of moving parts,
- Cracked or broken parts, and

• Any condition that may affect its safe operation.

TO PREVENT SERIOUS INJURY FROM TOOL FAILURE:

Do not use damaged equipment. If a crack or broken part is found do not use, have the problem corrected before further use.

LIMITED WARRANTY

PERFORMANCE TOOL extends only the following warranties, and only to original retail purchasers. These warranties give specific legal rights. Except where prohibited by local law, the law of the State of Washington governs all warranties and all exclusions and limitations of warranties and remedies. There may be other rights which vary from state to state.

PERFORMANCE TOOL warrants the product to be free from defects in materials and workmanship under normal use and service. A defective product may be returned for a free replacement within 90 days from the date of purchase, provided that product is returned to place of purchase immediately after discovery of defect. After 90 days and up to 1 year from date of purchase, PERFORMANCE TOOL will replace at no charge any parts which our examination shall disclose to be defective and under warranty.

These warranties exclude blades, bits, punches, dies, bulbs, fuses, and other consumables which must be replaced under normal use and service. These warranties shall not apply to any product or part which is used for a purpose for which it is not designed, or which has been repaired or altered in any way so as to affect adversely its performance or reliability, nor shall these warranties apply to any product or part which has been subject to misuse, neglect, accident or wear and tear incident to normal use and service.

PERFORMANCE TOOL does not authorize any other person to make any warranty or to assume any liability in connection with its products.

Except for warranties of title and the limited express warranties set forth above, PERFORMANCE TOOL makes no express or implied warranties of any kind with respect to its products. In particular, PERFORMANCE TOOL makes no implied warranty of merchantability and no implied warranty of fitness for any particular purpose, except that for goods purchased primarily for personal, family or household use and not for commercial or business use, PERFORMANCE TOOL makes an implied warranty of merchantability (and, if otherwise applicable, an implied warranty of fitness for a particular purpose), but only for the particular qualities or characteristics, and for the duration, expressly warranted above. The laws on limitation of implied warranties may differ from state to state, so the above limitations may not apply in all cases.

PERFORMANCE TOOL shall not be liable for consequential, incidental or special damages resulting from or in any manner related to any product, or to the design, use, or any inability to use the product. The sole and exclusive remedy for a defective product or part shall be the repair, or replacement thereof as provided above. The laws on limitation of remedies or on consequential, incidental or special damages may vary from state to state, so the above limitations may not apply in all cases.