
Instruction Manual

Be sure to read this instruction manual before installing this speaker.

WARNING

The Safety of Your Ears is in Your Hands

Get the most out of your equipment by playing it at a safe level - a level that lets the sound come through clearly without annoying blaring or distortion and, most importantly, without affecting your sensitive hearing. Sound can be deceiving. Over time, your hearing "comfort level" adapts to higher volumes of sound, so what sounds "normal" can actually be loud and harmful to your hearing. Guard against this by setting your equipment at a safe level BEFORE your hearing adapts.

ESTABLISH A SAFE LEVEL:

- Set your volume control at a low setting.
- Slowly increase the sound until you can hear it comfortably and clearly, without distortion.
- Once you have established a comfortable sound level, set the dial and leave it there.

BE SURE TO OBSERVE THE FOLLOWING GUIDELINES:

- Do not turn up the volume so high that you can't hear what's around you.
- Use caution or temporarily discontinue use in potentially hazardous situations.
- Do not use headphones while operating a motorized vehicle ; the use of headphones may create a traffic hazard and is illegal in many areas.

WARNING :

Handling the cord on this product or cords associated with accessories sold with the product may expose you to chemicals listed on proposition 65 known to the State of California and other governmental entities to cause cancer and birth defect or other reproductive harm.

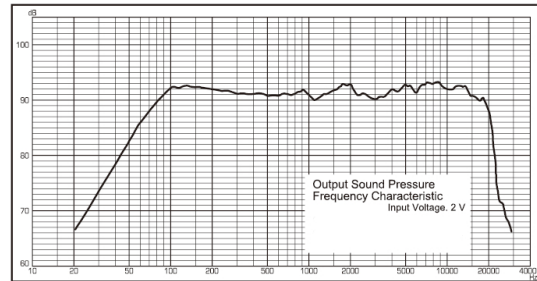
Wash hands after handling.

CAUTION

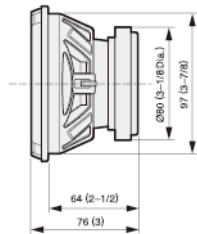
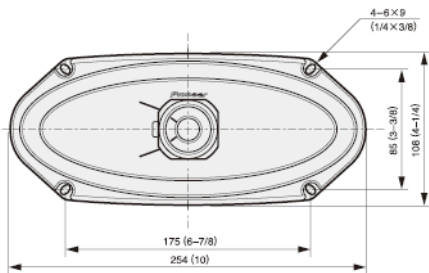
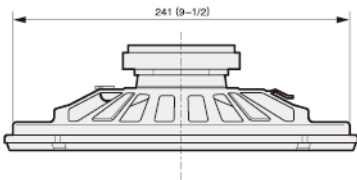
1. Do not touch the speaker flexible wire (A).
2. Do not change the direction of the speaker terminal assembly (B).
3. Make sure lead and speaker terminals do not contact metal.
4. When making connections, refer also to the instruction manual of the car stereo used.

Flush-Mount Car Speaker
4"×10" (108 mm×254 mm)
COAXIAL 2-WAY

- 4"×10" 2-WAY / HP 2 VOIES 108 mm×254 mm
- MAX.120 W (NOM.35 W)
- 38 Hz TO 23 kHz, 91 dB/W(1m)
- INJECTION-MOLDED CARBON-FIBER BLENDED PP CONE



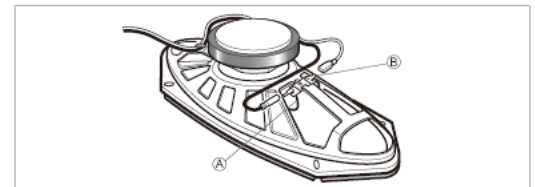
- MAX. MUSIC POWER 120 W
- NOMINAL POWER 35 W
- WOOFER 4"×10"
- TWEETER Ø1-5/8"
- IMPEDANCE 4 OHMS
- SENSITIVITY 91 dB/W(1m)
- FREQUENCY RESPONSE 38 Hz TO 23 kHz
- GROSS WEIGHT 1.80 kg 3 lb 15 oz



Unit/Unité : mm (in.)

● PARTS INCLUDED

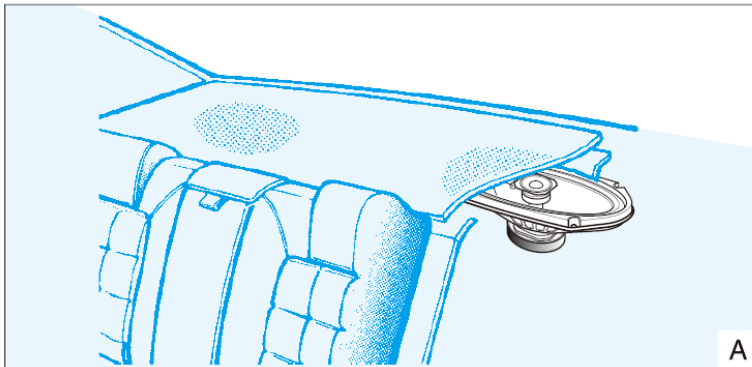
- ① — $\phi 4 \text{ mm} \times 30 \text{ mm}$ × 8
- ② — × 1
 30 cm (11-3/4")
 White cord / Fil blanc / Cordón blanco
- ③ — × 1
 30 cm (11-3/4")
 Gray cord / Fil gris / Cordón gris



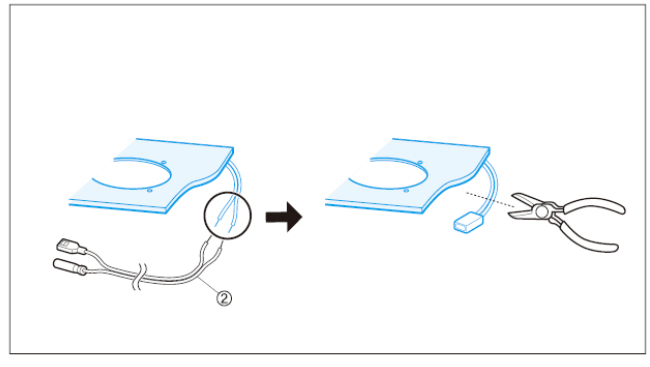
● **SPECIFICATIONS**

- Reproduction system Coaxial two way
- Speaker specifications
- Woofer 108 mm × 254 mm (4-1/4" × 10")
 - Injection-molded carbon-fiber blended polypropylene cone
 - High compliance, rolled edge
 - Heat-resistant voice coil
 - Strontium magnet : 250 g (8.8 oz)
- Tweeter ø42 mm (1-5/8" Dia.)
 - Strontium magnet : 21 g (0.8 oz)
- Nominal impedance 4 Ω
- Maximum music power 120 W
- Nominal power 35 W
- Weight (per speaker including accessory parts) 0.82 kg (28.9 oz)
- Gross weight (2 speakers including packaging) 1.80 kg (3 lb 15 oz)

● **EXAMPLE OF MOUNTING**



● **CONNECTION**



● **HOW TO INSTALL**

