

Installation Instructions

18-19 Jeep Wrangler JL
& JL Unlimited



IS-MOD-RR
Part Number
26410031 &
26410030

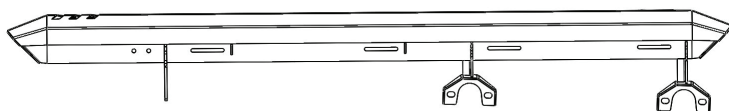
Important Safety Information



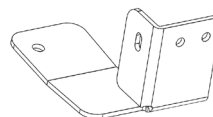
- CAUTION - Before driving, ensure that the side bars properly secured to vehicle.
- Periodically check all components for tightness.

Contents

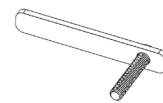
NOTE: Actual product may vary from illustration.



Right/Passenger Side Rock Rail



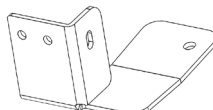
Right/Passenger Front Bracket



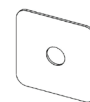
Bolt Plate (2)



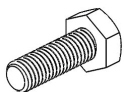
Left/Driver Side Rock Rail



Left/Driver Front Bracket



Plastic Keeper (2)



10mm Bolt (4)



10mm Nut (6)

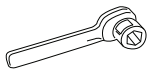


10mm Lock Washer (6)



10mm Flat Washer (10)

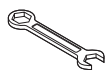
Tools Required



Socket Wrench



Socket Set



Wrench Set



Safety glasses

Before Installation

Remove any existing steps or side bars on the vehicle.

Installation

1

Starting on the Right/Passenger Side front, remove the skid plate bolt.

See Figure 1

NOTE: The opposite side will need to be loosened, but NOT removed entirely yet.

Figure 1



2

Remove the middle and rear body mount bolts.

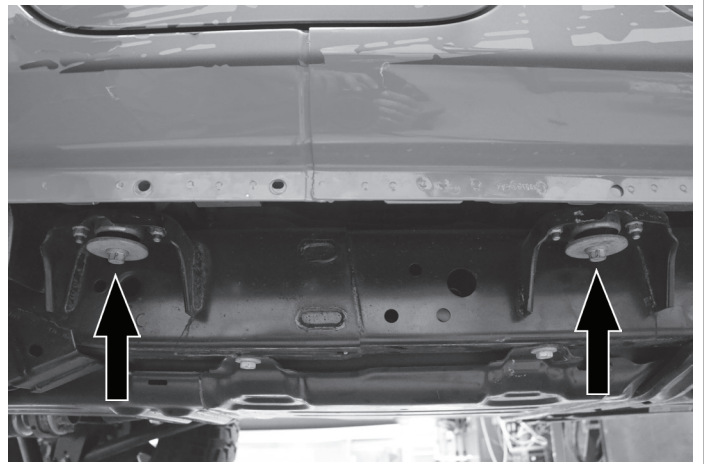


Save Hardware.

See Figure 2

NOTE: There is a plastic keeper in the body mount that prevents the bolt from falling out if it were to come unthreaded. A prybar may be required to finish pulling the bolt all the way out after being fully unthreaded.

Figure 2



3

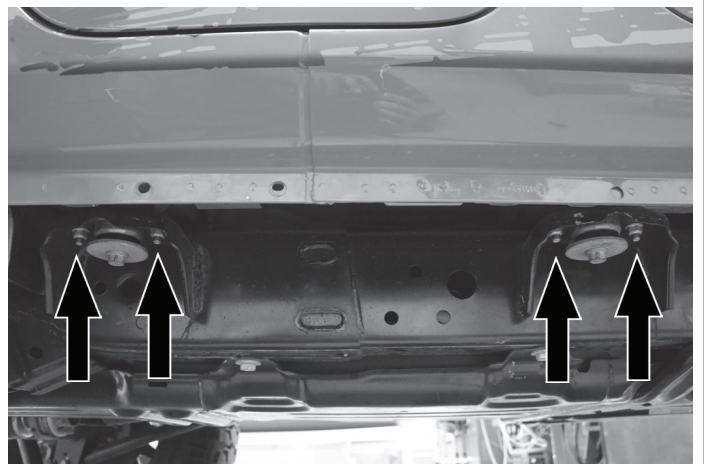
Remove the nuts on the middle and rear body mount alignment nuts.



Save Hardware.

See Figure 3

Figure 3

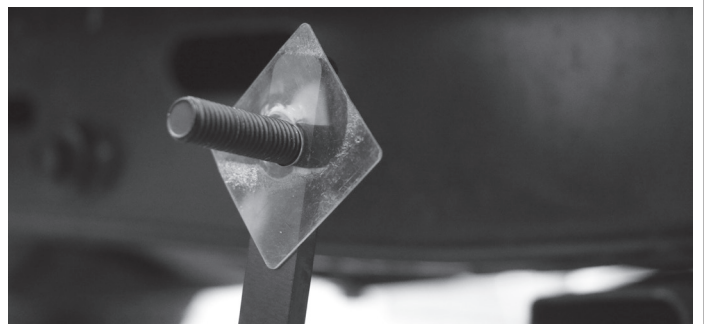


4

Fit a plastic keeper onto the bolt of the bolt plate. Make sure the plastic keeper is all the way up against the plate.

See Figure 4

Figure 4



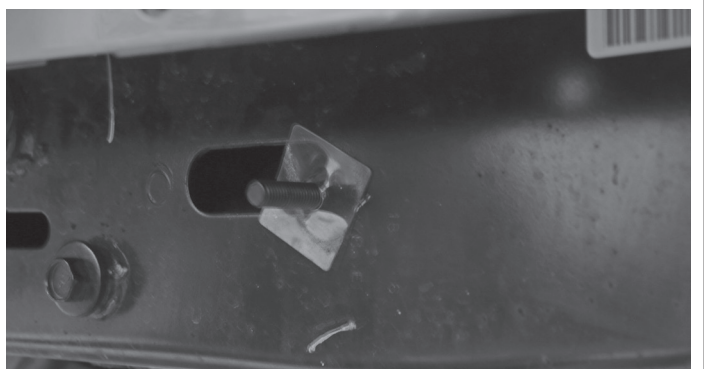
5

Place the bolt plate and plastic keeper into the large slot in the frame.

See Figure 5

NOTE: Make sure the bolt plate and plastic keeper are snug against the frame.

Figure 5

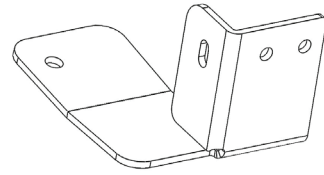


6

Identify the Right/Passenger Front Bracket.

See Figure 6

Figure 6



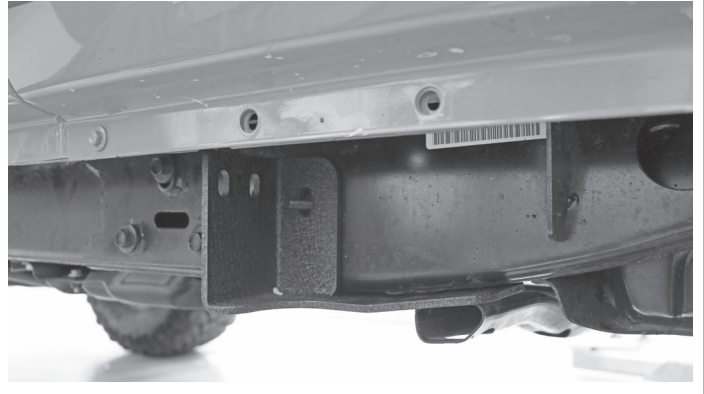
7

Place the Right/Passenger Front Bracket onto the frame as shown in Figure 7.

Install a 10mm washer, lock washer and nut on the bolt plate and reinstall the Factory bolt for the skid plate.

Do not tighten at this time.

Figure 7

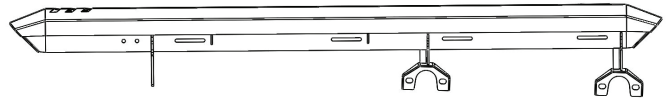


8

Identify the Right/Passenger Side Rock Rail.

See Figure 8

Figure 8

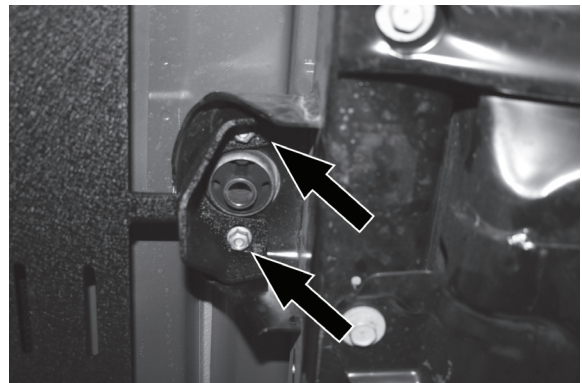


9

With a Helper, hold the Right/Passenger Side Rock Rail up to the frame. Position the brackets over the middle and rear body mounts, positioning the studs through the brackets. Secure using the original nuts. Leave hardware hand tight at this time.

See Figure 9

Figure 9

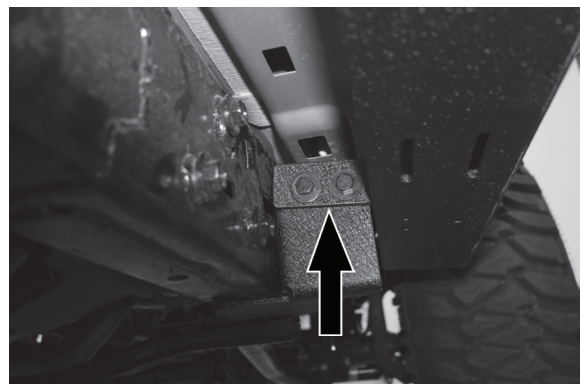


10

Bolt the Rock Rail to the Front Bracket using the provided 10mm bolts with flat washers, lock washers and nuts. Leave hardware hand tight at this time.

See Figure 10

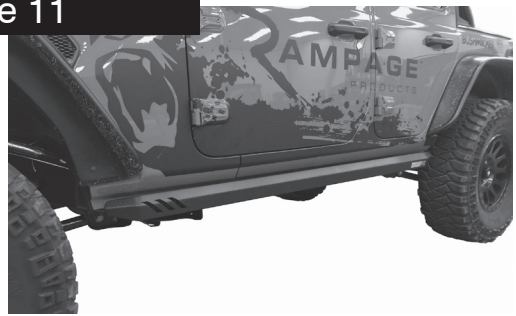
Figure 10



11

Center and level the steps, then tighten all hardware, except large body bolts.

Figure 11

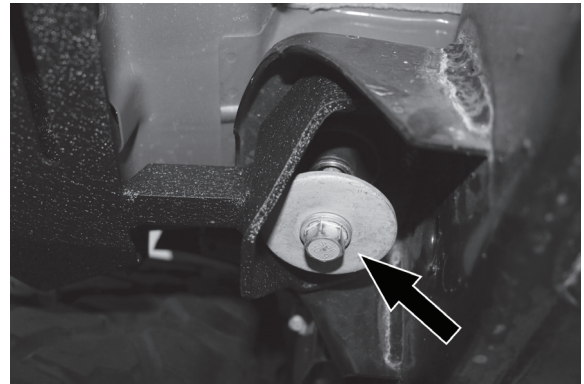


12

Reinstall the original body mount bolts. Tighten bolts
See Figure 12

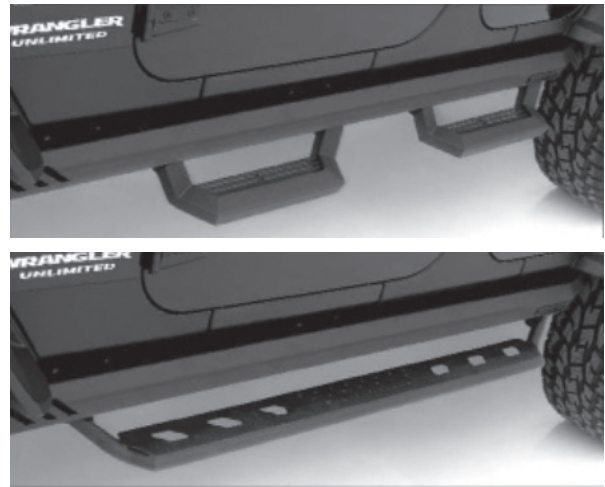
NOTE: It may be necessary to give the bolt head a tap to get the threads beyond the plastic keeper. Take care not to hit or push the bolt too hard and damage the body mount threads.

Figure 12



Steps

Rampage Modular Rock Rails can be used both with and without steps. Multiple Step options are available.



Care and Cleaning

- Rampage Bumpers are built to last; any detergent you use to wash your vehicle is sufficient to clean the bumper. Do not use any harsh abrasive detergents. Periodically check hardware for tightness.

Congratulations!

You have purchased one of the many quality Rampage branded products offered by Lund International. We take the utmost pride in our products and want you to enjoy years of satisfaction from your investment. We have made every effort to ensure that your product is top quality in terms of fit, durability, finish and ease of installation.



The material that your product is made from can be recycled. Please also consider recycling the packaging that your product came in.



Learn more about running boards and step bars we have.