



Installation Instructions

Recovery Bumper W/ Tire Carrier

87 - 06 Jeep Wrangler

NOTE: Please read this information before installing. **SOME DRILLING MAY BE REQUIRED** for the installation of these guards. For correct installation, we recommend you follow these step by step installations carefully. Please take care when installing this product to protect the finish and your investment.

Included Components

Tire Carrier Component

<u>QTY</u>	<u>Description</u>
1	Tire Carrier
1	Latch (installed)
1	1-1/4 x 8-1/2 Bolt
2	1-1/4 hex nuts
1	Wheel mount plate
1	3/4 x 6-5/16 bolt
1	3/4 lock nut
3	3/4 flat washers

Bumper Components

<u>QTY</u>	<u>Description</u>
1	Rear bumper
10	M12X30 mm Hex Head Bolts
18	M12 Flat Washers
8	M12 Nuts
10	M12 Lock Washers

IMPORTANT INFORMATION

This product will accommodate up to a 35" Tire.
Factory bumper and tire carrier mount will need to be removed.
The 3rd brake light will need to be relocated. Location may vary due to tire size.
Rampage now offers a universal rear brake light adapter part #86615. We recommend its use to maintain compliance with traffic laws.

BUMPER INSTALLATION INSTRUCTIONS

NOTE: Measure the distance on the mounting bracket and match these measurements on the frame or you may mount the outer four holes to the frame and use the holes on the bracket as a template to mark the drilling locations (Figure 1). Remove Bumper and set aside. Drill the frame holes to 7/16". **CAUTION:** Use extreme care in assuring the locations you drill are correct. Before drilling be sure to check the backside of the frame for possible hazards or obstructions.

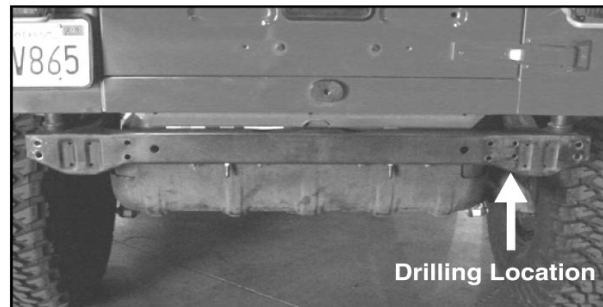


Figure 1

1. Position the new bumper against the back of the vehicle frame. Locate (8) M12 x 30mm Hex Head Bolts, (16) M12 Flat Washers, (8) M12 Lock Washers, and (8) M12 Nuts. Secure Bumper to frame by using the hardware listed in this step (Figure 2). Do not tighten hardware at this time.
2. Locate (2) M12 x 30mm Hex Head Bolts, (2) M12 Lock Washers, and (2) M12 Flat Washers. Line up the holes on the bottom of the Rear Bumper to the holes on the bottom of the frame. Secure the bottom of the Bumper to the frame by using hardware listed in this step (Figure 2). Tighten all hardware at this time.

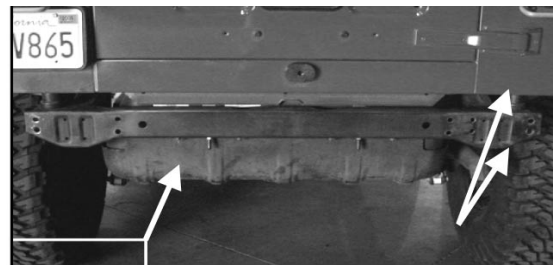
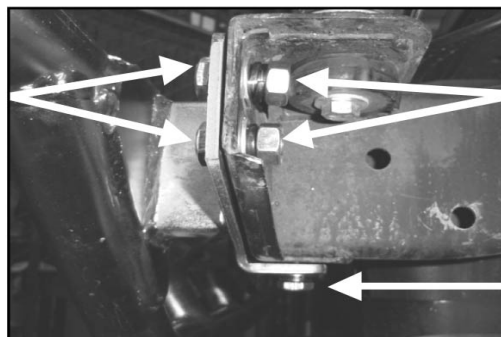


Figure 2

**M12x30mm Hex Head Bolt
M12 Flat Washer**



- **M12 Flat Washer**
- **M12 Lock Washer**
- **M12 Nut**

- **M12 Flat Washer**
- **M12 Lock Washer**
- **M12 Nut**

Figure 3

Tire Carrier Installation Instructions

Grease all bushings and pivot hardware with a light assembly grease before final installation for smooth and squeek free operation

1. Insert 3/4 washers as shown in fig. 1. Place carrier into mounting block on bumper and install the 3/4 bolt as shown in Fig. 1 with washer. Locate bolt through bottom of bumper. Install 3/4 nylock nut and tighten.
2. Check to make sure carrier swings freely and latches to the bumper securely.
3. Locate the 1-1/4 x 8-1/2 bolt and place it through the top tube of the carrier as shown in Fig. 2. Install 1-1/4 nut and tighten. Install second 1-1/4 nut and leave loose at this time.
4. Measure your wheels. Measure the distance from the backpad of your wheels to the outside of the tire. Install the wheel plate on the bolt and adjust to this dimension as shown in fig. 2. Tighten the second nut installed in the previous step against the plate to lock in place.
5. Check to make sure the tire is tight against the carrier. Fully tighten all hardware at this time.
6. Review your installation and open and close carrier to ensure proper alignment and latching.



Fig. 1



Fig. 2

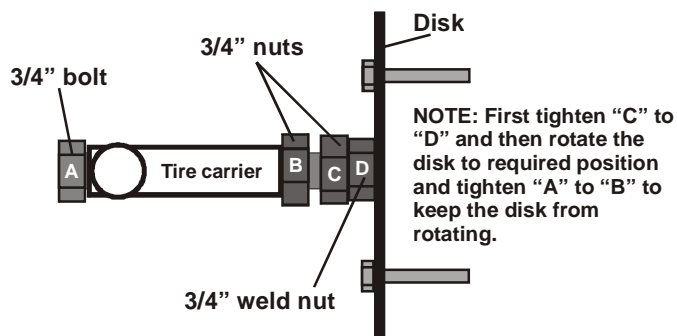
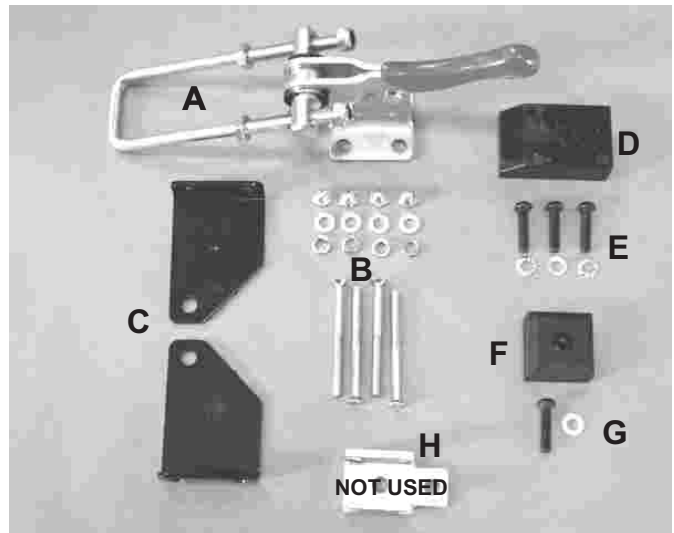


Fig. 3

Addendum: Latch assembly

Hardware:

- A) Latch assembly
- B) Flat head screws/nuts/washers
- C) Metal lock holders
- D) Plastic slider block
- E) Allen head screws (black)/tooth washers
- F) Rubber stop block
- G) Allen screw/washer (black)
- H) Not used



Installation

1) Install the latch assembly (A) to the swing away portion of the bumper with the long flat head screws/washers/acorn nuts (B). Be sure to install the black lock holders (C) as shown. Note the direction the lock holders are facing. Minor adjustments can be made by loosening these fasteners and moving the latch assembly as needed.

2) Install the plastic slider block (D) using the black allen head screws with tooth washers (E). An allen wrench is included for the screws.

3) Install the rubber stop block to the fixed portion of the bumper (F) where the latch hooks for the swing away. Use the remaining allen head screw and tooth washer (G). Tighten with included allen wrench.