

# BRACKET KIT INSTALLATION

SKU# WS-0101-BK



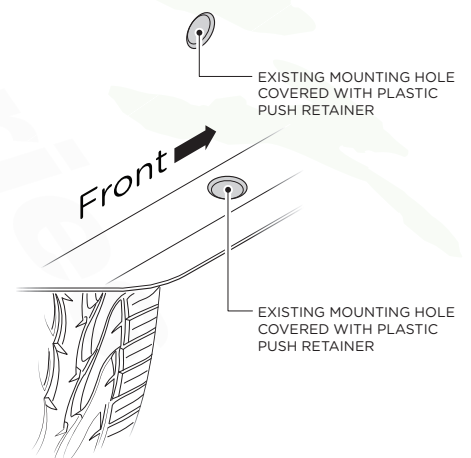
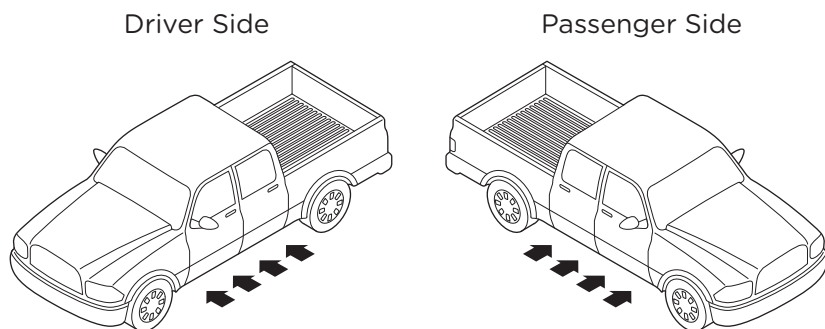
COMPONENTS		HARDWARE	
<p><b>DRIVER SIDE</b></p> <p>Qty: 1 Front Bracket</p> <p>Qty: 2 Center Bracket</p> <p>Qty: 1 Rear Bracket</p>	<p><b>PASSENGER SIDE</b></p> <p>Qty: 1 Front Bracket</p> <p>Qty: 2 Center Bracket</p> <p>Qty: 1 Rear Bracket</p>	<p>Qty: 16 M8 x 30MM Hex Head Bolts</p> <p>Qty: 32 M8 Flat Washers</p> <p>Qty: 8 M8 Bolt Plate</p>	<p>Qty: 32 M8 Lock Washers</p> <p>Qty: 16 M8 Hex Head Nuts</p>
TOOLS REQUIRED		INSTALLATION NOTES	
<p>RATCHET</p> <p>TORQUE WRENCH</p> <p>13MM SOCKET</p> <p>RETAINER REMOVAL TOOL</p>	<p>TORQUE NOTE: Bolts and nuts should be torqued to 15-20 ft lbs.</p> <p>NOTE: Hardware for Bracket &amp; Board Installation is included.</p> <p>NOTE: Some spare hardware may be included.</p>		

Remove all contents from the package and check brackets for any damage. Also, verify that all components and hardware listed above are included before you begin installation. If anything is missing or damaged please contact us at [customerservice@cyc-engineering.com](mailto:customerservice@cyc-engineering.com)

Read through entire installation manual and installation drawings to ensure that you understand all of the components and hardware before proceeding with installation.

**NOTE: When installing the brackets, all hardware must be left loose until all of the items are attached.**

Locate factory hole locations in four (4) places per side on the body mount.

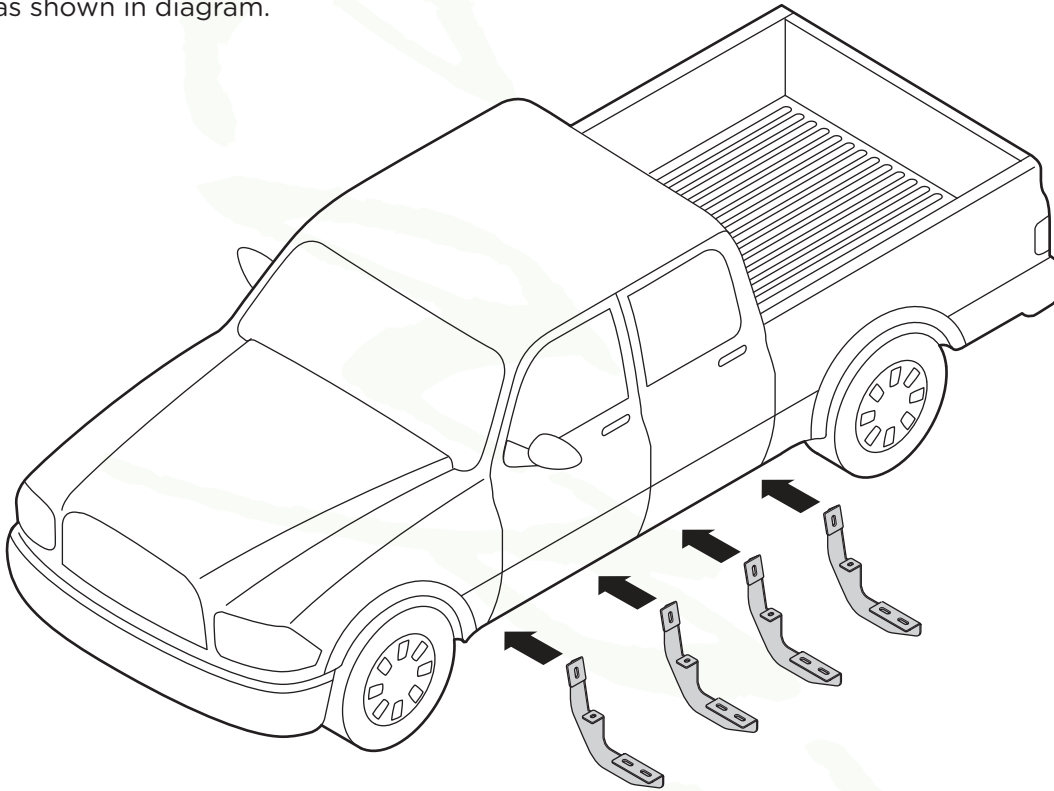


# BRACKET ORIENTATION

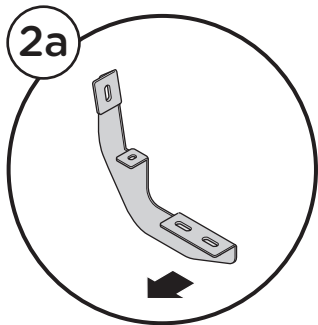
SKU# WS-0101-BK

*Raptor*  
Series

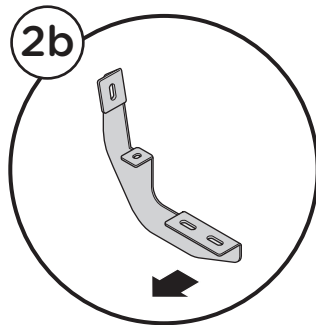
1. Begin installation on driver side. Position the Front Bracket, Center Brackets and Rear Bracket as shown in diagram.



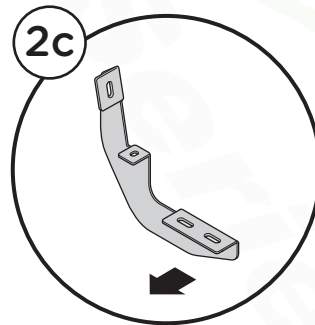
2. Driver Side Front Bracket cradle (2a), Driver Side Center Bracket cradles (2b, 2c), and Driver Side Rear Bracket cradle (2d) will all face towards the front of the truck.



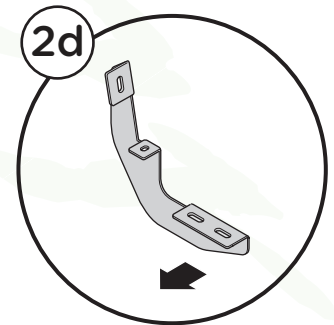
Driver Side  
Front Bracket



Driver Side  
Center Bracket



Driver Side  
Center Bracket



Driver Side  
Rear Bracket

# PLASTIC PUSH RETAINER REMOVAL

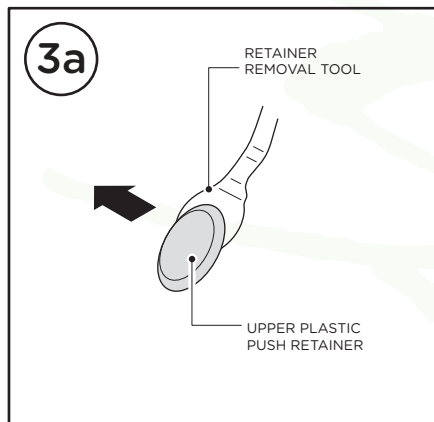
SKU# WS-0101-BK

*Raptor*  
Series

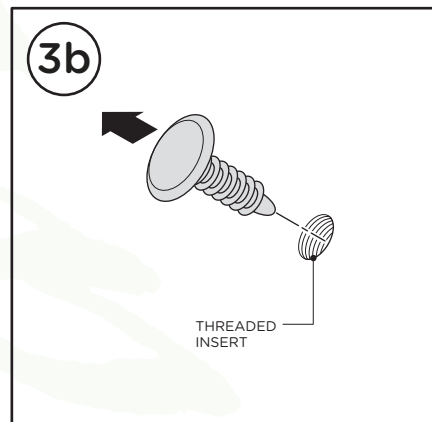
NOTE: Removal of Plastic Push Retainer is needed to expose factory holes.

**3.** Follow the steps shown below to remove the upper and lower Plastic Push Retainers.

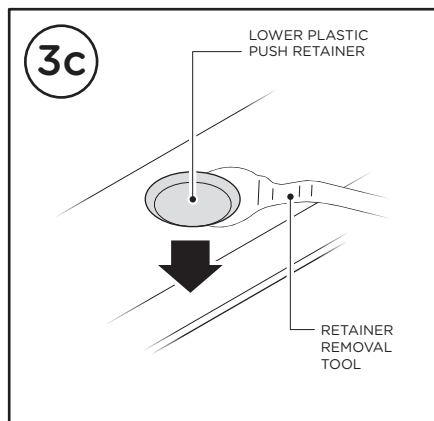
Use Retainer Removal Tool to grab underneath the upper Plastic Push Retainer in the rocker panel.



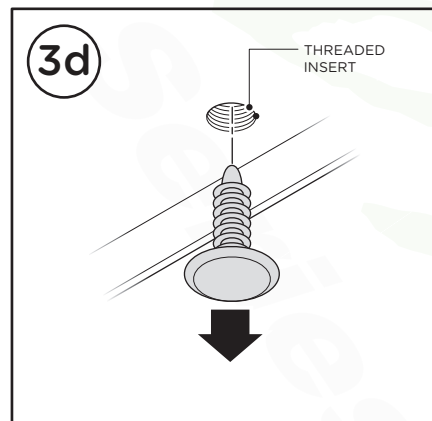
Pull the upper Plastic Push Retainer out of the rocker panel to expose threaded holes that will be used for bracket installation.



Use Retainer Removal Tool to grab underneath the lower Plastic Push Retainer in the rocker panel.



Pull the lower Plastic Push Retainer out of the rocker panel to expose threaded holes that will be used for bracket installation.

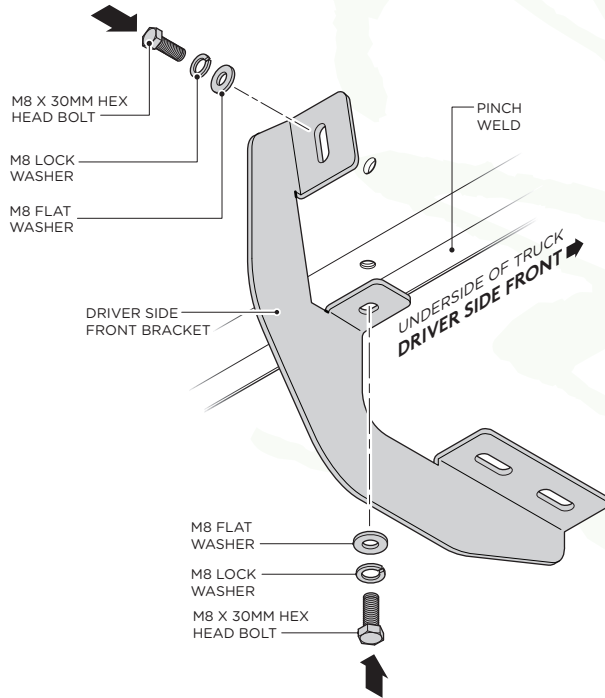


# BRACKET INSTALLATION

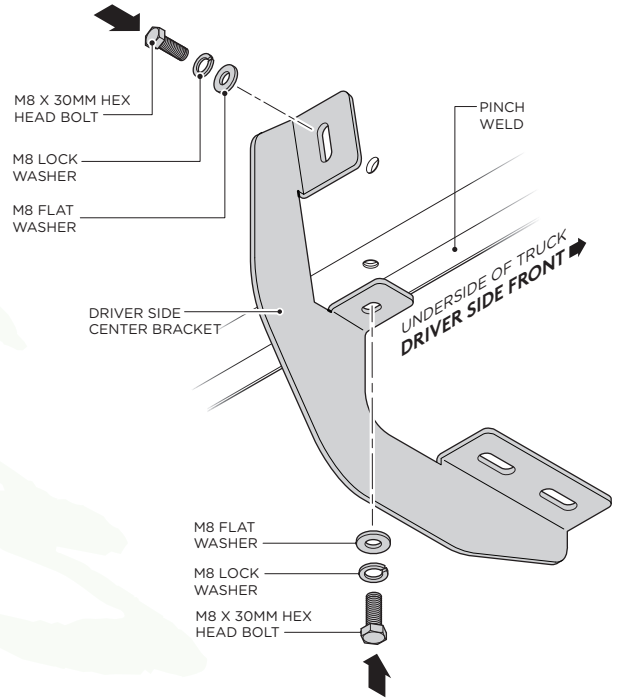
SKU# WS-0101-BK

*Raptor*  
Series

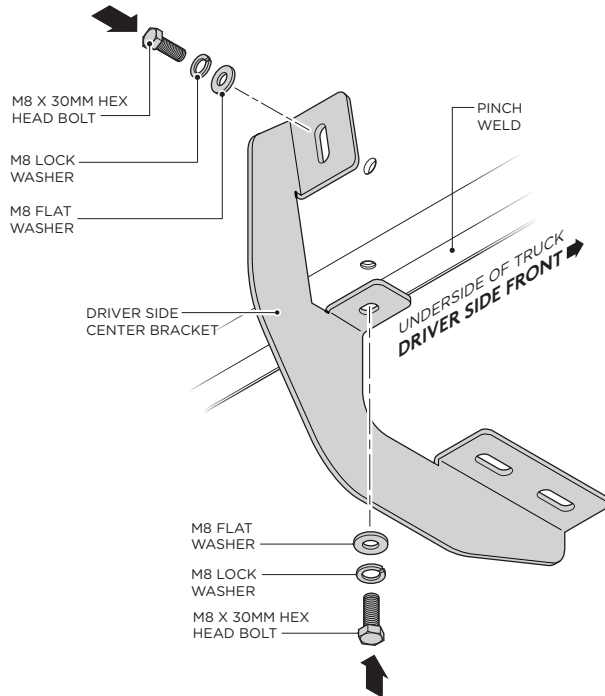
- 4.** Fasten the Driver Side Front Bracket by using (2) M8 x 30 MM Hex Head Bolts, (2) M8 Flat Washers and (2) M8 Lock Washers.



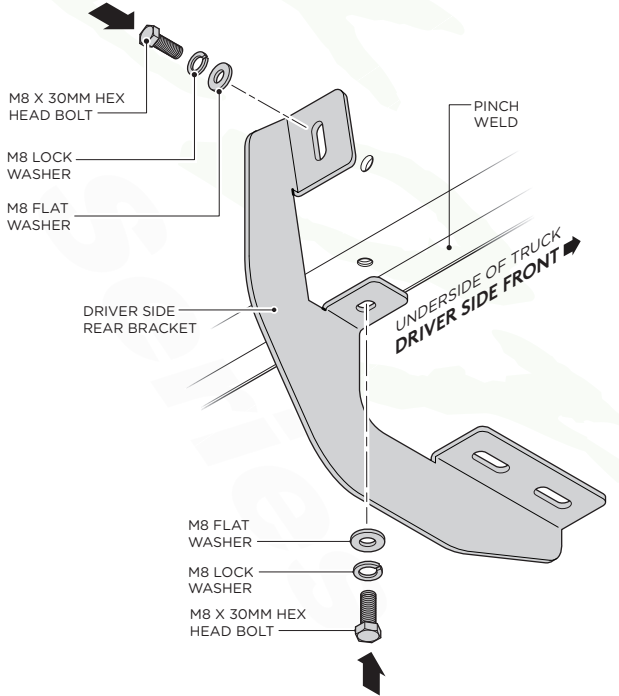
- 5.** Fasten the First Driver Side Center Bracket by using (2) M8 x 30 MM Hex Head Bolts, (2) M8 Flat Washers and (2) M8 Lock Washers.



- 6.** Fasten the Second Driver Side Center Bracket by using (2) M8 x 30 MM Hex Head Bolts, (2) M8 Flat Washers and (2) M8 Lock Washers.



- 7.** Fasten the Driver Side Rear Bracket by using (2) M8 x 30 MM Hex Head Bolts, (2) M8 Flat Washers and (2) M8 Lock Washers.

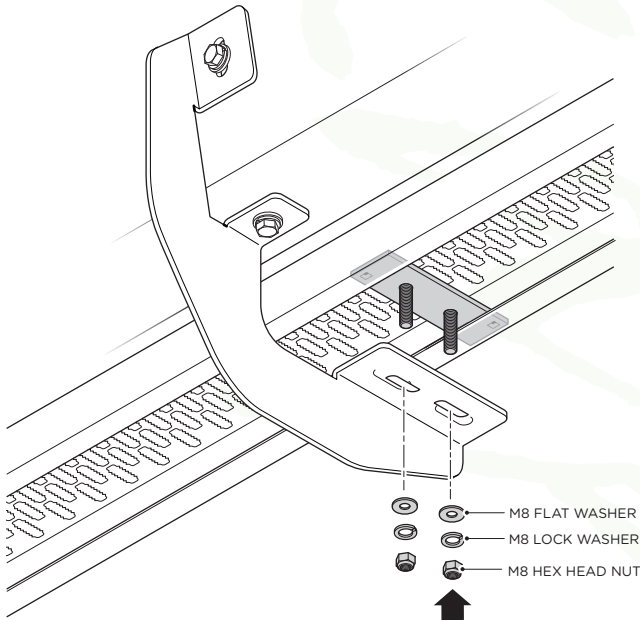


# RUNNING BOARD INSTALLATION

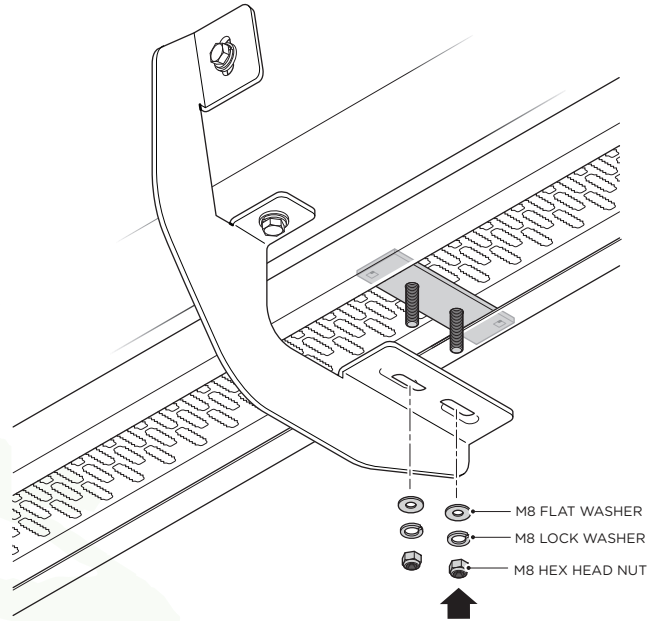
SKU# WS-0101-BK



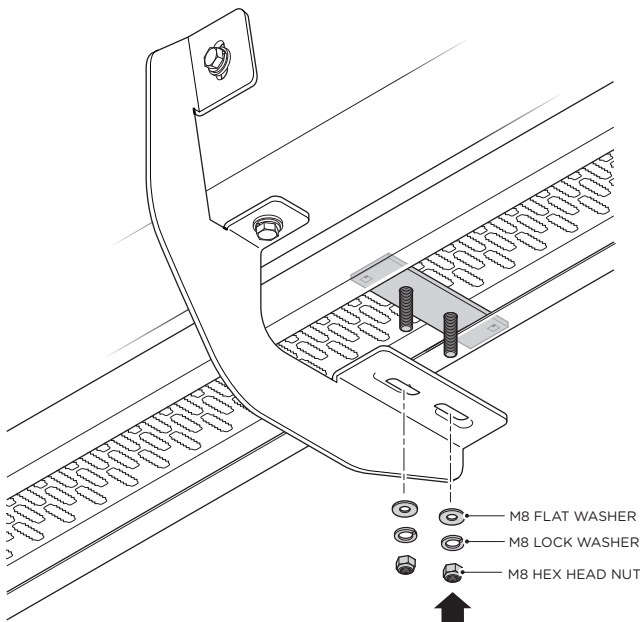
- 8.** Insert M8 Bolt Plate into bottom of the Running Board as shown, then fasten the to the Driver Side Front Bracket cradle by using (2) M8 Flat Washers, (2) M8 Lock Washers and (2) M8 Hex Head Nuts.



- 9.** Insert M8 Bolt Plate into bottom of the Running Board as shown, then fasten the to the First Driver Side Center Bracket cradle by using (2) M8 Flat Washers, (2) M8 Lock Washers and (2) M8 Hex Head Nuts.



- 10.** Insert M8 Bolt Plate into bottom of the Running Board as shown, then fasten the to the Second Driver Side Center Bracket cradle by using (2) M8 Flat Washers, (2) M8 Lock Washers and (2) M8 Hex Head Nuts.



- 11.** Insert M8 Bolt Plate into bottom of the Running Board as shown, then fasten the to the Driver Side Rear Bracket cradle by using (2) M8 Flat Washers, (2) M8 Lock Washers and (2) M8 Hex Head Nuts. The installation on the Driver Side is now complete. Repeat all previous steps on the passenger side of the vehicle.

