

## Installation Instructions CUSTOM QUICK INSTALL MOUNTING KIT

Part Numbers:

50054

Ram 2500

INSTALLATION SHOWN FOR THE 58058 OR 30035 RAILS

**Equipment Required:**

Fastener Kit: 50054F

Wrenches: 3/4", 7/8", 18mm

Drill Bits: 1/8", 9/16", 1-1/8" Hole Saw (10-Bolt)

5/8" & 1-1/8" Hole Saw (4-Bolt)

Other Tools: Center Punch, Measuring Tape

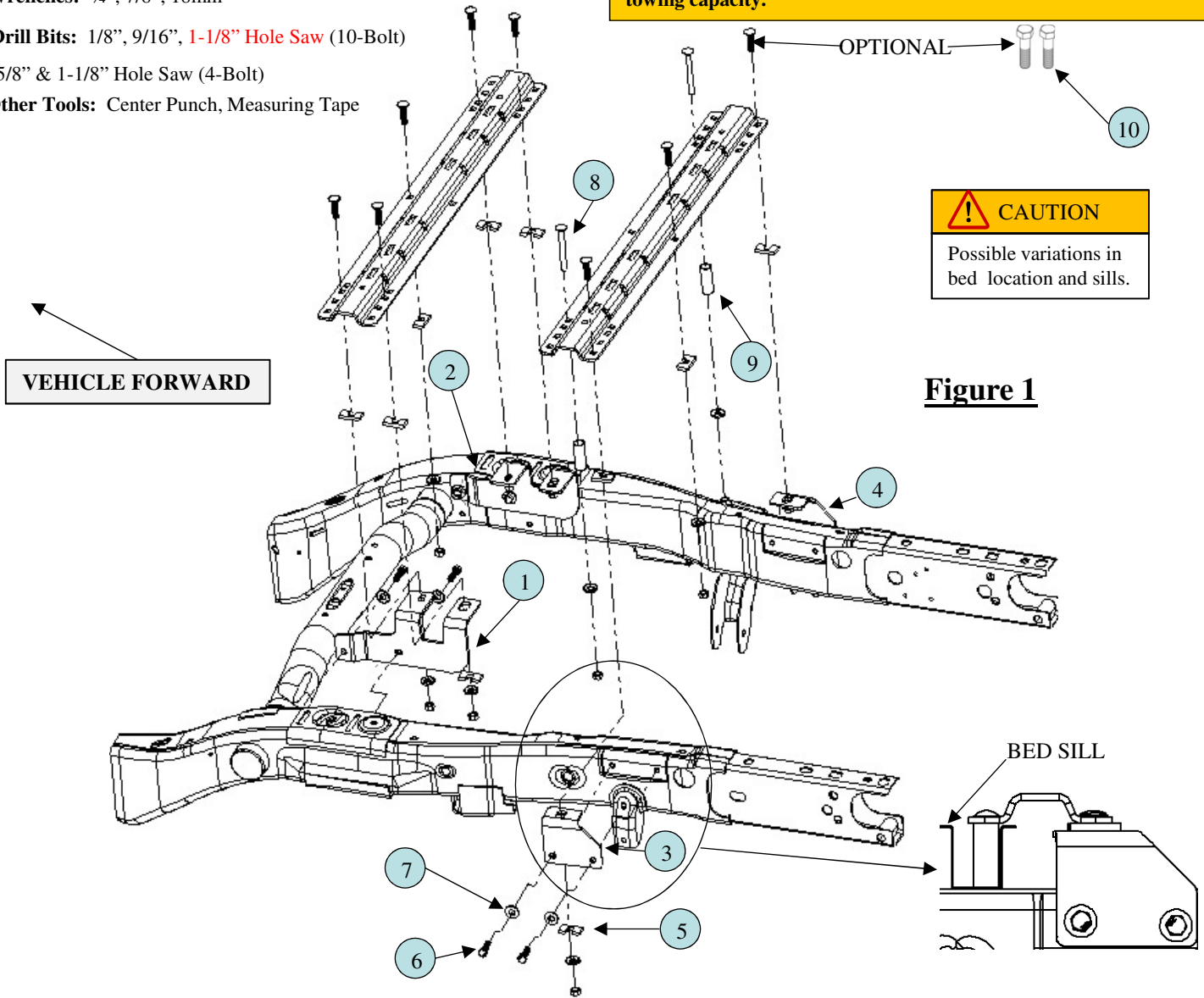
**WARNING:** Under no circumstances do we recommend exceeding the towing vehicle manufacturers recommended vehicle towing capacity.

OPTIONAL

**CAUTION**

Possible variations in bed location and sills.

**Figure 1**



ITEM	DESCRIPTION	QUANTITY	ITEM	DESCRIPTION	QUANTITY
1	BRACKET, DRIVER FRONT	1	7	CONICAL WASHER, 1/2"	8
2	BRACKET, PASSENGER FRONT	1	8	CARRIAGE BOLT, 1/2"-13 X 4.5"	2
3	BRACKET, DRIVER REAR	1	9	TUBE SPACER	2
4	BRACKET, PASSENGER REAR	1	10	BOLT, 1/2" -13 X 2" GR. 5	2
5	BLOCK, .25" X 1" X 3"	4	<p><b>All of the fasteners listed are supplied with this kit, all other mentioned fasteners are supplied with rail kit 58058</b></p>		
6	BOLT, M12 - 40MM - 1.5" CL 10.9	8			

**FOR  
INSTALLATION  
OF 58058 OR 30035  
RAIL KITS**

**Installation Instructions  
CUSTOM QUICK INSTALL  
MOUNTING KIT**

Part Numbers:  
**50054**

**Ram 2500**

1. Do not install mounting rails over plastic bed liners. Plastic bed liners must be cut out of the way to provide metal to metal contact. Mounting rails may be installed on spray in liners.
2. Use only bolts, nuts, and washers supplied to install this kit. All bolts & nuts are Grade 5 unless otherwise specified.
3. These instructions are guidelines only, actual installation is the responsibility of the installer and the owner. Always measure truck and trailer before installing hitch to be sure that there is clearance at the cab and at the bumper to allow for turns.
4. Lower and remove spare tire and lower exhaust if extra room is needed. Remove inner plastic wheel well liner to allow access to frame.
5. Detach the electrical wire loom and brake lines from the inside driver side of the frame.
6. Place the rear mounting rail in the box of the truck, using your tape measure, center the rail between the weld seams on the length of the truck box floor and the proper distance from the rear edge of the truck box as shown in Figure 2.  
**Note:** It is critical that rail is centered side to side on the truck bed.
7. Mark and center punch the holes as shown in Figure 2 (Rows 1 & 2). Remove the rail and drill each position with a 1/8" drill bit.  
**Note:** There will be drilling through the **top and bottom** of the bed sill perpendicular with the truck bed.
8. Temporarily position the frame bracket on the outside of the frame and check that the 1/8" drilled holes align with the slots of the frame bracket. Remove the frame bracket from the vehicle.
9. Enlarge the 1/8" drilled holes **in row 1** to 9/16". **Enlarge the 1/8" drilled holes in row 2 to 1-1/8" (bed corrugations only). The bottom of the bed sill requires a 9/16" hole. Paint all bare metal.**
10. Loosely install the frame brackets rear (3)(4) by attaching the bolts (6), conical washers (7). (See Figure 1)
11. **Install tube spacer (Item 9)**
12. Move rear mounting rail into position. Install the 1/2"-13 x 2" carriage bolts that are supplied with the rails **and the 1/2"-13 x 4-1/2" from this kit** with the block spacer. Block spacers to be located in the corrugation between the box and the mounting rail or between the box and **frame** brackets.
13. **The 1/2"-13 x 2" hex head bolts (10), may be used in place of the carriage bolts on the rearward most rail attachment if it is difficult to install carriage bolts. (Note the block spacer is to eliminate crushing bed corrugation.) Attach .25" x 1" x 3" block (5), 1/2" conical washers and 1/2" nut to the underside of the brackets per the illustrations and tighten snug to keep the mounting rail from moving. (For Row 1)**
14. **The forward side of the rear rail's holes (row 2) will fasten through the bed sill as shown in Figure 1 with the tube spacer, 4-1/2" carriage bolt, 1/2" conical washers and 1/2" nut fastening to the underside of the bed support.**
15. Place the unassembled 5th wheel saddles/slider/goose into the already installed **rear** mounting rail. Position the front mounting rail with the saddles/slider/goose by inserting the tabs into the mounting rail and pushing the mounting rail tight towards the other mounting rail. Ensure that the mounting rail is centered between the weld seams **on the length** of the truck box floor. This will position the mounting rail in the correct location and ensure that the 5th wheel will have a snug fit to the truck.  
**NOTE:** If more than one hitch product will be used with the rails then both should be used at the same time to align the second rail. This will ensure that one product does not compromise the fit of the other.
16. **Mark, center punch, and drill 1/8" holes per figure 2 for row 3 and 4. Repeat steps 8 and open these 1/8" holes to 9/16". Paint all bare metal.**
17. Move the **front** mounting rail into position. Install the 1/2"-13 x 2" carriage bolts with the block spacer to be located in the corrugation between the box and the mounting rail or between the box and front brackets (1) (2). **(Note the block spacer is to eliminate crushing bed corrugation.)** The rear end of the front brackets (Row 3) will be attached using the 1/4" x 1" x 3" block (5), 1/2" conical washers and 1/2" nut **as** shown in Figure 1. Attach the forward side of the front brackets (Row 4) with spacers, washers and nuts as per the illustrations and tighten snug to keep the mounting rail from moving.
18. After fully installing the 50054 custom mounting brackets, tighten the fasteners in the following sequence. **Note: Torque all 1/2" hardware to 75 ft-lbs 102 (N\*M) and all M12 hardware to 92 ft-lbs (125 N\*M). First torque the mounting rails to the frame brackets and then torque the frame brackets to the truck frame.**
19. Reinstall electrical wire loom and brake lines. Replace inner plastic wheel well liner to body, if removed, reinstall spare tire.

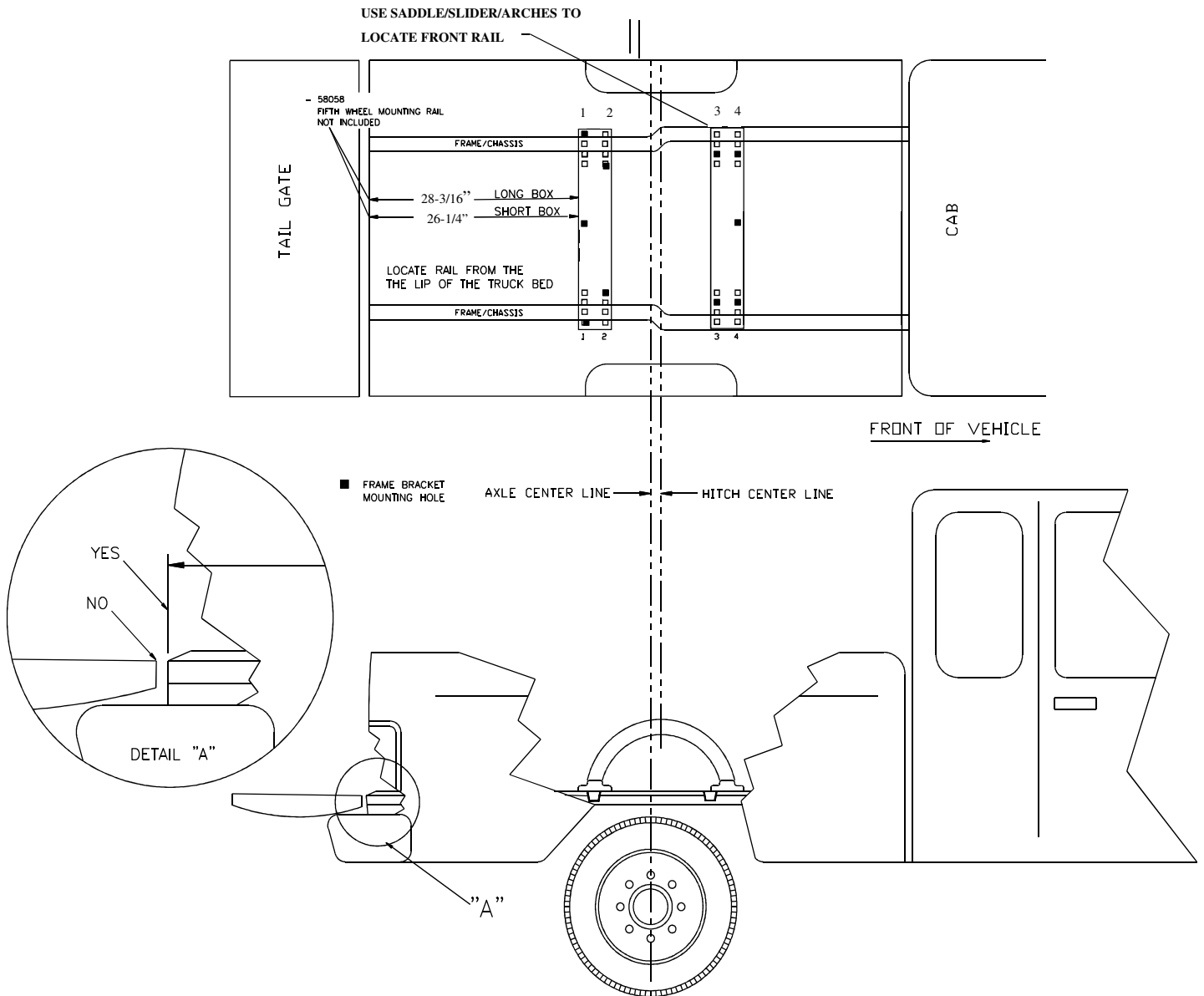
**Installation Instructions**  
**CUSTOM QUICK INSTALL**  
**MOUNTING KIT**  
**Ram 2500**

Part Numbers:  
**50054**

**Figure 2**

**Position the Rail**

**RAILS 58058 OR 30035 ONLY**

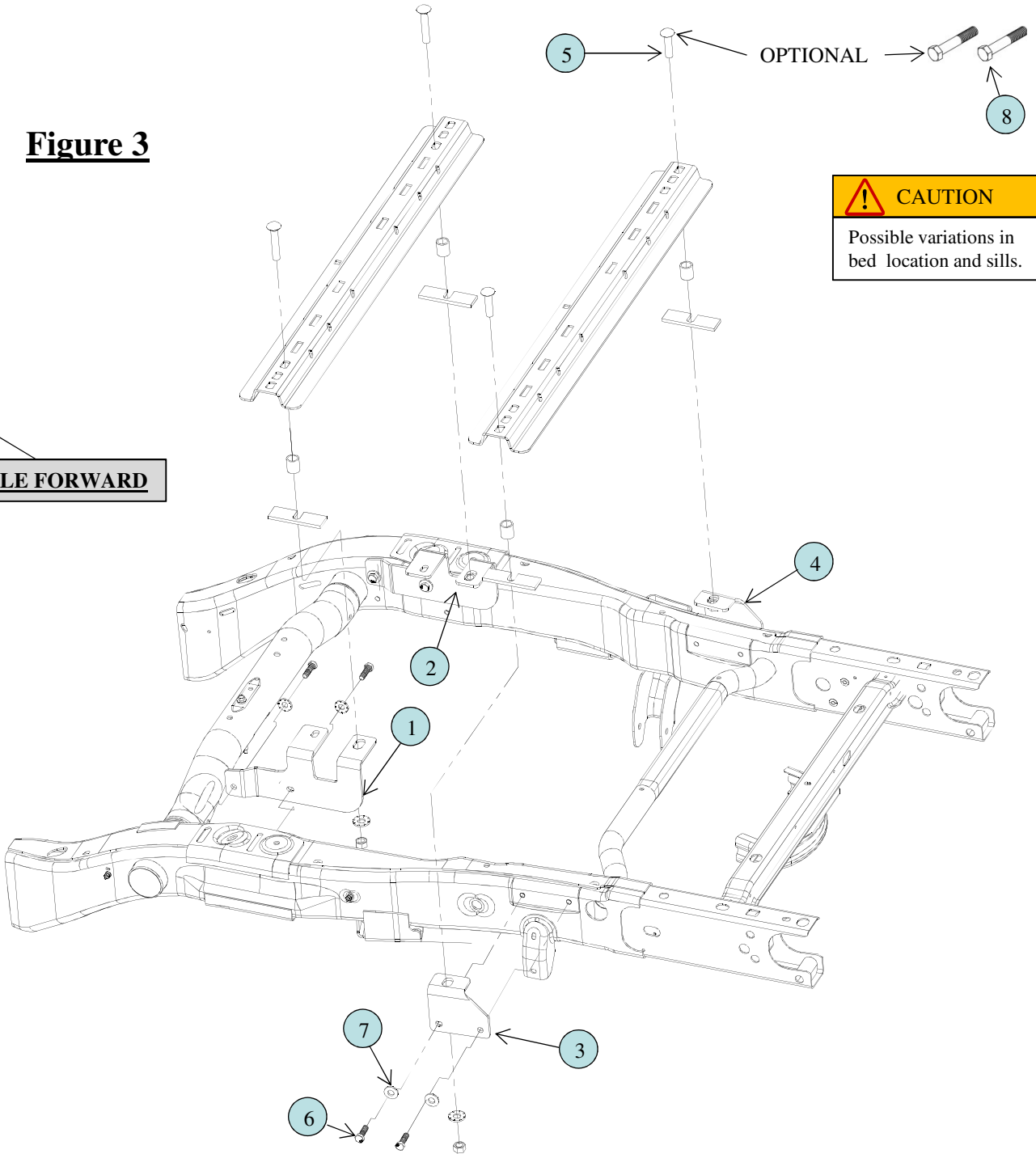


**FOR RAILS 58058 OR 30035 ONLY**

# INSTALLATION SHOWN FOR THE 30124 OR 30095 RAILS

**Figure 3**

**VEHICLE FORWARD**



**CAUTION**  
Possible variations in bed location and sills.

ITEM	DESCRIPTION	QUANTITY	ITEM	DESCRIPTION	QUANTITY
1	BRACKET, DRIVER FRONT	1	7	CONICAL WASHER, 1/2"	8
2	BRACKET, PASSENGER FRONT	1	8	BOLT, 5/8"-11 X 3.5"	2
3	BRACKET, DRIVER REAR	1	<p><b>All of the fasteners listed are supplied with this kit, all other mentioned fasteners are supplied with rail kit 30124</b></p>		
4	BRACKET, PASSENGER REAR	1			
5	CARRIAGE BOLT, 5/8"- 11 X 2.5"	2			
6	BOLT, M12 - 40MM - 1.5" CL 10.9	8			

**FOR  
INSTALLATION OF  
30124 OR 30095  
RAIL KITS**

**Installation Instructions  
CUSTOM QUICK INSTALL  
MOUNTING KIT  
Dodge Ram 2500**

Part Numbers:  
**50054**

1. Do not install mounting rails over plastic bed liners. Plastic bed liners must be cut out of the way to provide metal to metal contact. Mounting rails may be installed on spray in liners.
2. Use only bolts, nuts, and washers supplied to install this kit. All bolts & nuts are Grade 5 unless otherwise specified.
3. These instructions are guidelines only, actual installation is the responsibility of the installer and the owner. Always measure truck and trailer before installing hitch to be sure that there is clearance at the cab and at the bumper to allow for turns.
4. Lower and remove spare tire if extra room is needed. Remove inner plastic wheel well liner to allow access to frame.
5. Detach the electrical wire loom and brake lines from the inside driver side of the frame.
6. Place the rear mounting rail in the box of the truck, using your tape measure, center the rail between the weld seams of the truck box floor and the proper distance from the rear edge of the truck box as shown in Figure 2.  
**Note:** It is critical that rail is centered side to side on the truck bed.
7. Mark and center punch the holes as shown in Figure 4. Remove the rail and drill each position with a 1/8" drill bit.
8. Temporarily position the frame bracket on the outside of the frame and check that the 1/8" drilled holes align with the slots of the frame bracket. Remove the frame bracket from the vehicle.
9. Enlarge the 1/8" drilled holes to 1 1/8". **Paint all bare metal.**
10. Loosely install the rear frame brackets (3)(4) by attaching the bolts (6), conical washers (7). (See Figure 3)
11. Move rear mounting rail into position. Install the 5/8"-11 x 2.5" (5) carriage bolts that are supplied with the .657" x 1.271" tube spacer along with the block spacer to be located in the corrugation between the box and the mounting rail or between the box and rear brackets (3) (4). The 5/8"-11 x 3.5" hex head bolts (8), may be used in place of the carriage bolts on the rearward most rail attachment if it is difficult to install carriage bolts. **(Note the block spacer is to eliminate crushing bed corrugation.)** Attach 5/8" conical washers and 5/8" nut to the underside of the brackets per the illustrations and tighten snug to keep the mounting rail from moving.
12. Place the unassembled 5<sup>th</sup> wheel support arches/slider/goose into the already installed **rear** mounting rail. Position the forward mounting rail with the support arches/slider/goose by inserting the tabs into the mounting rail and pushing the mounting rail tight towards the other mounting rail. Ensure that the mounting rail is centered on the bed of the vehicle. This will position the rail in the correct location and ensure that the 5<sup>th</sup> wheel will have a snug fit to the truck. **Note:** If more than one hitch product will be used with the mounting rails then both types should be used at the same time to align the rearward mounting rail. This will ensure that one product does not compromise the fit of the other.
13. Repeat steps 8 through 10 **for the front rail.**
14. Move the **front** mounting rail into position. Install the 5/8"-11 x 3" carriage bolts that are supplied with the rails with .657" x 1.271" tube spacer along with the block spacer to be located in the corrugation between the box and the mounting rail or between the box and front brackets (1) (2), through the rail and front brackets (1) (2). **(Note the block spacer is to eliminate crushing bed corrugation.)** Attach 5/8" conical washers and 5/8" nut to the underside of the brackets per the illustrations and tighten snug to keep the mounting rail from moving.
15. After fully installing the 50054 custom mounting brackets, tighten the fasteners in the following sequence. **Note: Torque all 5/8" hardware to 150 ft-lbs (204 N\*M) and all M12 hardware to 92 ft-lbs (125 N\*M). First torque the mounting rails to the frame brackets and then torque the frame brackets to the truck frame.**
16. Reinstall electrical wire loom and brake lines. Replace inner plastic wheel well liner to body, if removed reinstall spare tire.

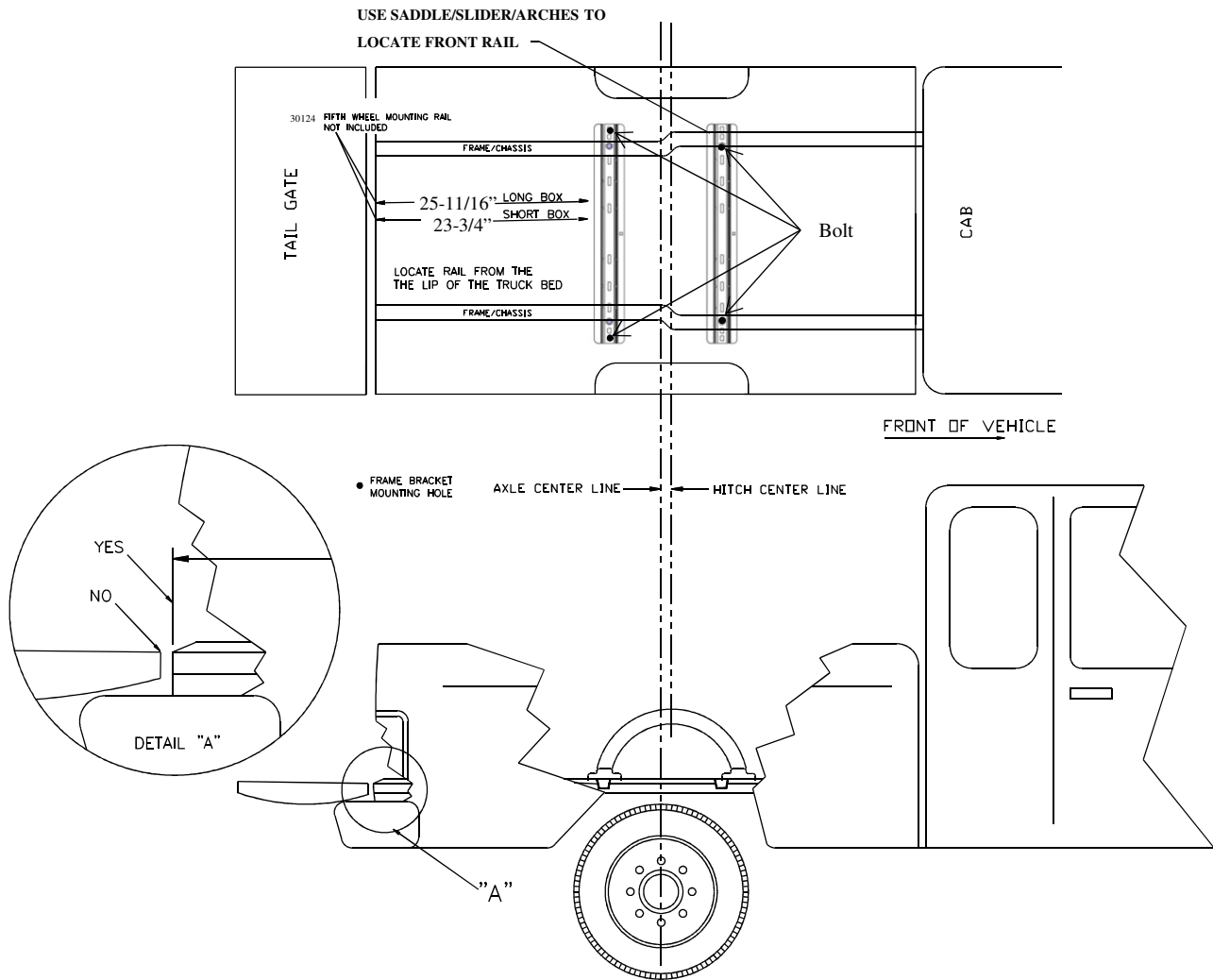
**Installation Instructions**  
**CUSTOM QUICK INSTALL**  
**MOUNTING KIT**  
**Ram 2500**

Part Numbers:  
**50054**

**Figure 4**

**Position the Rail**

**RAILS 30095 OR 30124 ONLY**



**FOR RAILS 30124 OR 30095 ONLY**