



RENNLINE

Performance Parts and Accessories



"Driven to improve excellence"

Apparel	23-24
Brakes & Wheels	18-19
Electrical	
Battery Mount Kits	16-17
Batteries & Accessories	17-18
Engine & Related	14-16
Exterior	
Magnetic Accessories	1
Tow Hooks & Tie Downs	2-4
Garage & Tools	17
Interior	
Dash	5-7
Floor Accessories	7-9
Pedals	9-10
Door Accessories	10-11
Miscellaneous	11-12
Safety	13-14
Suspension	20-23

Rennline Inc. is located in Milton, Vermont just minutes north of Burlington and within close proximity to Montreal, Canada. Rennline is an industry leader in unique, after market, motorsport accessories for German automobiles. Rennline was started by Paul Jacques, a native Vermonter, who has had gas in his veins since birth. Over the years, Paul's reputation has brought to him such projects ranging from MTV music awards to the Dual Ammunition Feed on the militaries XM 307 Air Bursting Weapons System. It is this combination of creativity and precision that has given Rennline products the functional, yet esthetically pleasing characteristics they possess. He has over 16 years experience in the aerospace fabrication industry, and 21 years experience customizing Porsche 911's. One day in 2001 Paul said, "We already make components for some of the fastest vehicles in the sky.....Why not the ones down on earth?" It was that day that Rennline was born. His enthusiasm, strive for perfection, knowledge and skill are reflected in every high quality product Rennline manufactures.

Rennline is not just a distributor, but is also the manufacturer of all products that have the Rennline name. Our abilities include: CNC Waterjet, milling and turning operations, bending, forming, welding, embossing, powder coating, painting, anodizing and we even have an in-house screen printing operation. Our extremely diverse facility allows us to design, as well as, prototype and manufacture all of our own products in-house. This aspect gives us constant control over innovation, quality, pricing and availability of all Rennline products. In addition, this allows us to offer our products to the general public for much lower prices than most parts distributors.

We know what it takes to make our customers happy. To do that, we guarantee every product we offer, and strive to provide excellent service. We listen to what you have to say and work very hard to put your suggestions into practice. One of our customers recently sent us an e-mail that said, "Your company is truly unique in today's world, I thought that customer service was a thing of the past until I came across Rennline." That is just the way we want our customers to feel. If you have ideas about ways in which we can provide better service, or thoughts about new products, please let us know. It is your feed-back that allows us to continuously evolve our product line into the excellence that we are driven to achieve.



Rennline is now offering many of its products for multiple applications! To verify if a product fits your specific model, reference the color code located at the bottom of the product description throughout this catalog.

- Porsche
- Audi
- BMW
- Mini
- VW
- Universal

All materials enclosed here in are the property of Rennline Inc. Any duplication without expressed written permission is strictly prohibited.

All manufacturer's names, photos, symbols & descriptions are used for reference only. They do not imply that any listed product is the product of these manufacturers, unless otherwise noted. Porsche, Boxster, Carrera, Targa, and the Porsche Crest are registered trademarks of Porsche AG. BMW and the BMW logo are registered trademarks of BMW AG. Audi and the Audi logo are registered trademarks of Audi AG.



EXTERIOR

MAGNETIC TRACK MASKS & CHIP GUARDS

Rennline's track mask is a great way to protect your car's paint from the inevitable rock chips resulting from a good day at the track. Available in a 4 or 6 piece set, we have what you need. Simply clean the surface of your car and apply these magnets and you'll be ready for a worry free event. Need your number on your hood? We offer this option as well! Available for most models.



MAGNETIC RACE GRAPHICS

Rennline magnetic race graphics are the perfect system for anyone who drives their car to and from track events. Don't risk ruining your paint job by using duct tape or other stick on products. This product will also keep your track officials and corner workers happy by having a set of clear and visible numbers on your car. Want your car club or race team's logo? We do custom shapes and graphics. Give us a call for your specific needs



TEMPORARY & PERMANENT RACE GRAPHICS

If you don't like the idea of a magnetic race number, or have composite or aluminum body panels, then Rennline's temporary or permanent race numbers might be what you're looking for. Our temporary race graphics are manufactured out of a specially designed low-adhesive vinyl that keeps them stuck to your car throughout a track event or an entire season, but allows them to be easily removed when needed. These disposable graphics will not scratch your paint, will not come off at high speeds, and are ideal for drivers who are issued different numbers at each track event. Available in white only. Our permanent race numbers are available in many colors.



WINDSHIELD VISORS & GRAPHICS

Rennline's windshield visors and graphics are available in several colors and can be purchased as just a visor, graphic, or both. The standard visor features the Rennline logo, but any custom graphic can be ordered (call for pricing). Unlike most similar products on the market, the Rennline visors are specifically designed for the windshield of each model automobile, eliminating the need for excessive trimming and custom-fitting.



SCREW-IN FOLDING TOW HOOKS

Rennline's folding race hooks have a 2" opening as required by most organized race events. Constructed from stainless steel and comes with a red tow sticker and a rubber bumper for the back side to insure your bumper cover will never get scratched from hook contact. Keep the corner workers and track officials happy by installing a set of hooks that are both highly visible and highly functional.

Note: These hooks are available with several factory threads (Porsche, Audi, BMW and Mini) or standard threads to be used with Rennline's universal and non factory mounting brackets.



SCREW-IN STATIONARY TOW HOOKS

Rennline's stationary race hooks have a 2" opening as required by most organized race events. These pulls are a 2 piece design allowing you to mount them close to the factory bumper cover without the worry of scratching your paint while screwing them in. Constructed from powder coated steel, available in 5" or 6" and come with a white tow sticker. Keep the corner workers and track officials happy by installing a set of hooks that are highly visible and work.

Note: These hooks are available with several factory threads (Porsche, Audi, BMW and Mini) or standard threads to be used with Rennline's universal and non factory mounting brackets.



UNIVERSAL BRACKETS

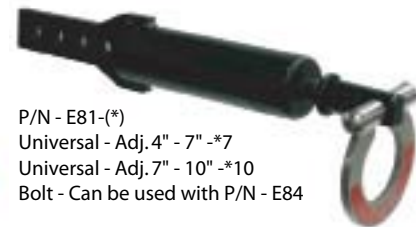
Adding a set of removable tow hooks to that custom built race car can be a frustrating task, involving tons of special fabrication and welding. Over the years Rennline has become known for solving this problem on many model specific applications. We have taken our years of experience and engineering and have created a universal line of brackets that will make your job a bit less overwhelming. All units are constructed from mild steel, powder coated black and designed to be used with Rennline's folding (p/n-E13.09) or stationary (p/n-E05.09, E06.09) screw in style universal tow hooks.



P/N - E80-(*)
 Universal - Weld 1.75" X 12" - *12
 Universal - Weld 1.75" X 18" - *18
 This is a cut to length unit
 can be used with P/N - E85, E86 and E87



P/N - E81-4
 Universal - Bolt - Adj 1"- 4" - *4
 Can be used with P/N - E84



P/N - E81-(*)
 Universal - Adj. 4" - 7" - *7
 Universal - Adj. 7" - 10" - *10
 Bolt - Can be used with P/N - E84



P/N - E82
 Universal - Flat
 Weld or Bolt



P/N - E83
 Universal - 90°
 Weld or Bolt



P/N E84
 Universal
 90° Base plate
 Used to bolt on P/N E81 -(*) , E01-(*)



P/N - E86
 Universal End Mount
 Weld or Bolt (Bracket Only)
 Used with P/N E80, E17 and E18



P/N - E85
 Universal Through Body
 Weld (Bracket Only)
 Used with P/N E80, E17 and E18



P/N - E87
 Universal Side Mount
 Weld (Bracket Only)
 Used with P/N E80, E17 and E18



SCREW-IN TOW HOOK RECEIVERS

964/993 with bumper supports removed

Until now, track enthusiasts who removed their bumper supports to reduce weight had no options for mounting tow hooks for track applications. Rennline's tow hook receivers replace the factory bumper shocks with a bolt on mount that Rennline's "screw in" style tow hooks thread into, allowing a completely stock appearance on the street and enhanced functionality on the track. All Rennline's tow hooks have a 2" opening, as required by most track sanctioning bodies. Powder-coated steel construction with stainless steel hardware. Screw in hook (P/N E13.09, E05.09 or E06.09) sold separately. NOTE: All front mounts utilize the factory tow hook hole location. All rear hooks require a hole added into the bumper cover.



SCREW-IN TOW HOOK RECEIVERS

74-89 911 with factory or fiberglass bumpers

Until now, track enthusiasts who had stock bumpers on their 1974-1989 Porsche 911, 912, and 930's have had no options for mounting tow hooks for track applications. Rennline's tow hook receivers replace the factory bumper shocks with a crush style tube that the Rennline's "screw in" style tow hooks thread into, allowing a completely stock appearance on the street and enhanced functionality on the track. All Rennline's tow hooks have a 2" opening, as required by most track sanctioning bodies. Powder-coated steel construction with stainless steel hardware, comes with black rubber bumper plug for stock appearance when hook is removed. Screw in hook (P/N E13.09, E05.09 or E06.09) sold separately.



RETRACTABLE TOW HOOKS

74-05 911's with factory bumper shocks removed

A majority of newer factory built race cars feature retractable tow hooks, and now Rennline has engineered a tow hook for your custom race car that offers the same advantages. These retractable tow hooks are available as "bolt on" units for any corner of your 1974-1989 911, 964, 993 and 996 or when used with our universal mounting brackets, these hooks can be mounted in many different configurations based on your specific needs. Made from powder-coated steel with a spring-loaded retractable hook and comes with (2) tow stickers. Your shins will thank you.



AUDI A4 RACE BOLT ON TOW HOOK

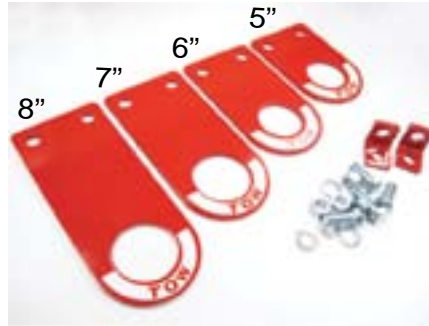
1996-01 A4, S4 & RS4

Adding race tow hooks to most cars can be a frustrating task, due to the amount of components that generally inhabit the desired location. Over the years Rennline has become known for solving this problem on many Porsche models and now you Audi owners can join the club. These new tow hooks have been specifically designed for the 1996-01 A4, S4 and RS4 with factory or most aftermarket bumper covers. Do you have a large intercooler? No problem, Rennline took this into consideration and gave you the clearance required to accept most systems installed on these cars. Available in flat and folding configurations that can both be easily removed when not in use.



UNIVERSAL TOW HOOKS

Rennline's Universal Race Tow Hooks have been specifically designed for those of you who have a custom built race car that will not accept a "vehicle specific" style race hook. They are available in 4 different lengths and come with (2) 90 degree brackets to aid in a smooth installation. Made of steel and powder coated red. Each kit comes with (2) "TOW" stickers and mounting hardware.



UNIVERSAL TOW HOOK - ADJUSTABLE

This Race Tow Hook is specifically designed to bolt onto the factory bumper shock mount location on all 911/912/930 cars from 1974-89 with fiberglass (front or rear) bumpers. Most aftermarket fiberglass bumpers vary in depth, therefore Rennline's unique design is adjustable from 9" to 12" allowing you to fine tune the amount of exposed hook protruding through your bumper. Although this tow hook was designed for the 911, it can be used on many custom applications. Each tow hook comes powder coated red with (2) Tow stickers.



FRONT TIE DOWNS & SPOILER PROTECTION

Rennline's heavy-duty front tow hooks attach to the strongest, forward-most point of the 911's front suspension - the front of the a-arm. The tow hooks are bolted down by the same three large bolts that secure the front a-arm to the unibody, and they've been specifically designed as skid plates that will keep your 911 protected when traversing steep driveways or speed bumps. Rennline's tow hooks are made of steel and powder coated red, so they are easily visible to tow truck operators. Installation of tow hooks will not affect alignment settings. All new hardware is included with kit.



UNIVERSAL TIE DOWNS

Rennline's tie-down brackets are available in four variations, flat, 90°, 66°, and 45° to allow you to install these brackets in many different locations based on your specific needs. Mounting hole measures 16.5mm. This is the same dimension as most shock mount bolts and several other suspension components.



The 66° tie downs are designed specifically for 996/997/Cayman and Boxsters. Note: These come in sets of 2.

Available in Brushed Stainless Steel or red powder coated steel.

ALUMINUM SKID PAN/PLATE

A lowered ride height is a must for any car used on the track or for performance street driving. The biggest downside to this modification is ground clearance. Speed bumps, pot holes or the occasional "Off Track" excursion can cause some serious damage to the underside of your car. Rennline Aluminum Skid Plates have been designed to eliminate those concerns. All of our skid pans are model specific to give you the ultimate fit and protection. Hardware and installation instructions are included with each pan for a hassle free install.



Interior

ALUMINUM GAUGE BEZELS

Rennline's aluminum gauge bezels are a quick and easy way to freshen up your car's interior. Unlike other similar products that are stamped from very thin material, Rennline's gauge bezels are precision CNC machined from billet aluminum to assure perfect fit and quality. The bezels are clear anodized and come with double-sided adhesive for a fast and reversible installation.



INDICATOR LIGHT COVER

What part of your Porsche do you look at the most? If you drive it, then the answer is simple, the gauges. We're not sure what Porsche was thinking when they left that big black flat area below the gauges on the 996, but Rennline has the solution. Our stainless dash plate really dresses up any 996 dash and still allows all the indicator lights to be seen. This simple and easy to install element really defines that classic 5 individual gauge look that Porsche has been famous for since the first 911 was produced in 1964. This dash plate is made out of 300 series stainless steel and comes with a double sided adhesive already applied and ready for a 2 minute installation. Comes with a brushed finish but can easily be painted to suit your individual needs. 996/986 1996-05.



QUICK DISCONNECT STEERING WHEEL HUB

A removable steering wheel is a "Must Have" in any track car with race seats and harnesses. Rennline has incorporated the Porsche Motorsports engineering with our own style and finish to give you the best quick disconnect hub available. Unlike most hubs on the market, Rennline's has a tapered asymmetrical engagement point that will retain your steering wheel's position every time it is installed. Machined from 7075 aluminum for strength with an anodized finish that will last forever. These hubs are designed to work with most MOMO, OMP, and other steering wheels and adaptors that have the standard 6 bolt pattern. Available in Black and Silver for most models.





Interior

STEERING WHEELS & ACCESSORIES

Whether you drive a stripped out track car or a Sunday show queen, Rennline has the steering wheel for you. We offer a wide range of steering wheels and accessories to give you the exact set up you desire.



ALUMINUM RACE DASH

This super lightweight dash cover has been specifically designed to finish off that stripped out dash of your 911 race car. This one piece unit covers the entire bottom half of the dash area from the top pad down. The dash panel comes with ignition and mounting holes only, custom holes can easily be added during installation. All stainless steel hardware is included for an easy installation. Available in brushed or black powder coat finish.

Note: Dash padding and glove box must be removed for installation.



914 INSTRUMENT CLUSTER

It's time to modernize those dated gauges in your 914. This job is made easy with Rennline's aluminum instrument cluster. This unit is made from billet aluminum and comes with a brushed finish that is easy to paint if desired. It will accept all modern size instruments as well as needed 1/2 inch wide warning lights that were originally integrated with your factory gauges. VDO and Autometer sell an inexpensive device to convert a mechanical speedometer cable rotation into an electronic impulse signal, thus allowing the use of an electronic speedometer. Your 914's original cluster has outdated size cut outs, and will not fit modern-size instruments. Fits 914 1969-76



RADIO & HEATER CONTROL BLOCK OFF PLATES

Radio and Heater Control block off plates - Until now, removing the center console from your 964/993 was not possible due to the required switches that were mounted in it. Rennline's new radio and heater control block off plates solve that problem. These plates have been specially designed to accept the factory switches installed in the center console of all 964/993 cars. Don't have the factory switches? No problem. These plates are also available without switch cutouts so you can install your own switches or gauges. Made from powder coated metal and installs in minutes on cars with the radio or heater controls removed. Available in 6, 3, and 0 switch configurations.



LOWER DASH DELETE PANEL 964/993

A very popular modification on any 964/993 is the removal of that big, bulky knee pad assembly that consumes the lower dash area. The only problem with this weight saving (14 lbs) alteration is that you will be left with exposed hardware and a very "unfinished" appearance to your dash. Rennline's lower dash delete panel has been designed to solve all of the issues mentioned above. Simply bolt this unit in place of the factory knee pad and your done. Available in black textured powder coat to match existing factory dash components or bare aluminum that can be painted or wrapped in leather.



AIRBAG COVER DELETE PANEL 964/993

Most, if not all track prepared 964/993 cars will have their air bags removed to save weight and to avoid being deployed if the inevitable were to happen. Factory air bag covers are very valuable, and should not be left in these cars to become victims of the less than gentle treatment that track cars receive. Rennline's airbag delete panel is a lightweight aluminum panel that is formed to the exact shape and size of the factory padded air bag cover but weighs 2/3rds less. Available in solid or perforated with a textured black powder coat finish to match the existing factory dash, uses all factory air bag cover hardware. Note: Airbag must be removed to use this product.



ALUMINUM TRACK MATS

Rennline's Track Mats give your interior the purposeful look of a racing Porsche and are the perfect solution for protecting your interior from the wear and tear of track driving. The only aluminum floor mat of its kind on the market, Rennline's Track Mats are inspired by the floor design of factory Cup Cars to provide drivers a smooth flooring surface that enables the quick footwork demanded of track driving. Rennline's Track Mats are constructed from lightweight anodized aluminum, weigh less than two pounds, and are stamped with reinforcing ribs for strength. They fit precisely over the contours of Porsche floors and affix with hook and loop fastener or can be permanently mounted if desired. Available in Silver or Black for most Porsche models.



FULL RACE ALUMINUM TRACK MATS 964/993

Specifically designed for the 964/993 cars with the factory floor padding removed. This Track Mat is an exact replica of the factory wood Cup Car's floor panels with the exception that Rennline's are aluminum. Comes with factory style mounting brackets that can be bolted to the floor or welded like the factory did. All stainless steel hardware and mounting instructions included. Available in clear anodized or textured black powder coat finishes.



ALUMINUM FLOOR/PEDAL BOARDS

Factory Replacements

If you haven't already replaced those rotted or cracked floorboards in your Porsche, you need to. Don't waste your money on another set of wood floorboards that will just rot like your old ones, or plastic ones that will crack with time. Rennline now offers aircraft grade aluminum floor boards that will last forever. These floorboards are very light weight and install in minutes. They're exact replicas of the original floorboards without the need to ever replace them. Available in silver(anodized) and black(powder coat) finishes, driver and passenger side for all 911(LHD & RHD),964,993,356 and 914's.



ALUMINUM FLOOR/PEDAL BOARDS

Over the Carpet

Give your late model a touch of the "RS" with these new aluminum floorboards. These machined boards can be used with or without carpet and with all factory style floor mats or Rennline Track Mats. Installs in minutes and are available in silver anodize and black powder coat finishes for both driver and passenger side.



GAS PEDAL FOOT GUARD

When designing the mini, the engineers didn't exactly leave any extra room between the throttle pedal and the center console. This lack of space forces your foot to come in contact with the plastic console every time the throttle pedal is actuated, causing severe scratching and gouging almost immediately. Rennline's foot guard is a machined, anodized aluminum accessory that will eliminate new scratches or hide existing ones. Available in Silver or Black finishes.



FLOOR BOARD ACCESSORIES

Throttle stop - Until now, there has never been a source for a new throttle stop, which on many older 911's is battered from years of use. Rennline's new aluminum throttle stop mounts on both stock and Rennline floor boards, and comes with a new nylon adjuster bolt and stainless hardware.



Mounting kit - Don't install those shiny new floorboards using your old beat up rusty hardware. Rennline now offers stainless steel floor board mounting kits. Each kit comes with a specially embossed stainless spacer, washer and nut.



ALUMINUM SHIFT LINKAGE & E-BRAKE COVERS

Shift coupler cover - is an attractive replacement for the stock cover, made of perforated aluminum and comes with stainless steel hardware. This is the perfect item to jazz up the stripped-out interior of your track 911 or give that street 911 a race car look. Available in silver(anodize) or black(powder coat)

E-brake block-off plate - This emergency brake & heater control block-off plate will dress up the interior of your dedicated track 911 with the emergency brake and heater controls removed. It comes pre-drilled with stainless steel mounting hardware for a quick and easy installation. Available in perforated or solid, silver(anodize) or black(powder coat) finishes.

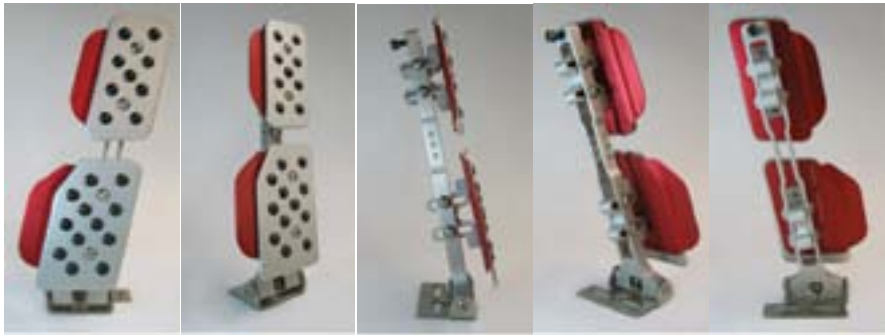


ADJUSTABLE PEDAL & SETS

Can't Heel/Toe?

Rennline's fully-adjustable gas pedal is an industry first, and finally solves the problem of the gas pedal being located an inch or more deeper than the brake and clutch pedals. The Rennline adjustable pedal can be manipulated in any direction - not only for height and depth, but also laterally and angularly. You'll never again have to struggle to heel-and-toe or have your shoe catch the edge of the brake pedal as you transition from the gas.

Pedals are available in silver(anodize) or black (powder coat) finishes. Extensions are available in Red, Silver or Black anodize. Sold individually or as sets for most models with cable driven gas pedals.



ALUMINUM PEDAL SETS - RUBBER GRIP

Rennline's aluminum pedal covers are the ultimate interior upgrade for any performance automobile. No other gas pedal on the market gives you the flexibility of adding heel and toe throttle extensions and/or an adjustable lifter plate to fine tune your individual ergonomic preference. Our rubber grip pedals have a look and feel that puts them in a class of there own. All Rennline pedals are machined from aircraft grade aluminum with chamfered edges. Each kit comes with stainless steel hardware, replacement rubber grips and installation instructions. Available in silver(anodize) or black(textured powder coat) finishes for most models. Sold individually or as sets.



ALUMINUM PEDAL SETS - PERFORATED

Rennline's aluminum pedal covers are the ultimate interior upgrade for any performance automobile. No other gas pedal on the market gives you the flexibility of adding heel and toe throttle extensions and/or an adjustable lifter plate to fine tune your individual ergonomic preference. Rennline's perforated pedals are very lightweight and have raised drilled dimples that ensure a non-slip surface. All Rennline pedals are machined from aircraft grade aluminum with chamfered edges. Each kit comes with stainless steel hardware and installation instructions. Available in silver(anodize) or black(textured powder coat) finishes for most models. Sold individually or as sets.



CAYENNE STAINLESS STEEL /RUBBER PEDALS

We are not sure why Porsche added those nice stainless pedals to their Cayenne without including a dead pedal, but they did. Once again Rennline has a solution. Our aluminum and stainless steel dead pedal perfectly matches the factory stainless gas and brake pedals. This dead pedal is contoured to cover the entire carpeted dead pedal area, camouflaging any damage that may already exist. If you do not have the factory stainless pedal covers as an option on your car, no problem. Rennline sells factory gas and brake pedals as well.



THROTTLE EXTENSION KIT

Need more width on your gas pedal? Rennline's throttle extension kit is what you are looking for. Depending on your driving style, this throttle extension kit can be used as a heel, toe, or heel/toe configuration. It's easy to install and is designed to be used with most Rennline gas pedals. Available in red, silver, or black.

All throttle extension kits come with both heel and toe extensions that can be used individually or together. Throttle pedal cover is not included with this kit.



THROTTLE LIFTER PLATE KIT

Need more height on your gas pedal? Rennline's adjustable lifter plate will solve the problem. This add on pedal accessory turns your standard Rennline gas pedal cover into a fully adjustable unit. This unique design installs in minutes and allows full height adjustment up to 1 inch. Not only does this lifter plate adjust the height but it also allows you to adjust the pedal angle in both lateral and longitudinal directions. This feature allows you to set the exact angle required to easily perform heel/toe maneuvers. Best of all, every adjustment is simply made from the 3 mounting screws on the face of the pedal.



RS STYLE DOOR PULLS

Interior pull strap handles are factory installed on all Porsche RS models. They are light, functional and simply put... sexy. Rennline has taken this design and integrated it into many makes and models so that you can now share a bit of "RS" style in your interior. Each kit comes with complete replacement components that eliminate your factory plastic handles and require zero to moderate modification of your existing handle surround. Available in several different colored straps.



INTERIOR HANDLES

Finally a set of door handles that look great and will last forever. These are not covers, but complete replacements of your factory plastic door handles. Guaranteed never to bend or break. These Rennline door handles are machined from 6000 series billet aluminum and attach with all factory hardware. Available in silver(anodize) or Black(textured powder coat), solid and perforated versions for all 1974-98 911's.



LOCK KNOB & LOCK PIN SETS

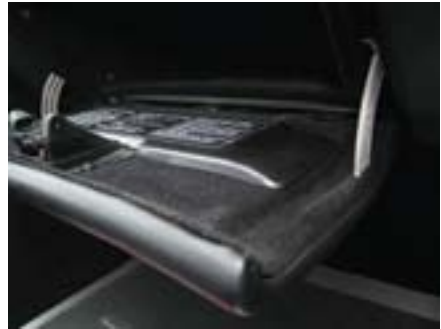
This beautiful 4 piece billet aluminum lock/knob set will really dress up that interior of your 1974-89 911. They are machined out of aircraft grade aluminum, anodized to a satin finish, and come with all stainless steel hardware. Each kit comes equipped with all components required to transform both driver and passenger side doors.

Aluminum lock pin sets are the perfect inexpensive interior upgrade for any automobile equipped with this feature, machined from 6061 aluminum and are available in silver or black anodized finishes. All kits come as set of (2) lock pins and have black rubber trim rings installed. No tools required for this 5 minute interior upgrade, just unscrew the undesirable factory plastic units and screw these on. It is that simple.



944 GLOVE BOX STOP REPAIR KIT

Does your 944/968 glove box door bruise your unsuspecting passengers knees? This is a common problem for most 944/968 cars with the factory plastic glove box stops. Rennline has come up with a solution. Our stainless steel door stops will last forever and look great too! Constructed from 300 series stainless steel in either brushed or black(powder coat) finishes and sold as a set.



STAINLESS STEEL SILL PLATE SETS

It's time to replace those weathered, beat up plastic sill plates that the factory installed on your car. Rennline sill plates are by far the nicest sill plates on the market. We stock all of these 300 series stainless steel sill plates in plain or your choice of several embossed logos. Rennline will even do custom order etched logos (call for pricing), perfect for car clubs and race teams. Sold as a set.



STAINLESS STEEL SILL PLATE COVERS

Since Porsche already did such a beautiful job with the insignia that they recessed into their factory sill plates, we decided to leave perfection alone and just improve on the area that needs attention. The 996/997/Boxster and Cayman have an extremely wide door sill that makes getting in and out very difficult without dragging your feet across that big black plastic factory sill plate. Scratches were virtually impossible to avoid until now. Rennline has created a 300 series stainless steel sill plate that will cover any existing scratches and avoid any new ones. Best of all, installation is effortless. No more pulling off that factory sill plate hoping the paint doesn't come with it. This sill plate design installs over the top of the factory plastic unit allowing your Porsches logo to still be seen. All sill plate sets come with double sided adhesive applied to the back ready for a 5 min installation. Available with an oval or factory style square logo cut out.



ALUMINUM SEAT SWITCH BEZELS

Aluminum seat switch bezels are a sure way to brighten up your car's interior and make it stand out in a crowd. Unlike any product on the market, these bezels are a direct replacement of the factory plastic units found on most 1978-98 Porsches with power seats. Simply unscrew the original and install these in their place for a 2 minute interior upgrade. Sold in sets of 2 and are available for most factory seats with a 2 or 3 switch configuration.



ALUMINUM SHIFT KNOB & E-BRAKE HANDLE

Unlike most shift knobs & E-brake handles on the market, Rennline's are far from "universal". Universal usually means that it will nearly fit some applications and will not fit the rest. All Rennline shift knobs are CNC machined to fit specific applications, eliminating the concern of missing a gear due to a loose or detached shift knob. There is no need to cut, drill, or modify your factory shift lever to install. All of our shift knobs are machined to 1.875" diameter and have rubber trim rings installed at the base. Rennline E-brake handles match the shift knobs in both style and finish and also come with rubber trim rings. Available in silver and black anodized finishes, for cars with or without integrated boots.



FIRE WALL BLOCK OFF KIT

1965-89 911

Removing the fan/defrost assembly is a standard modification on any lightweight 911 that is to be used for performance driving on or off the track. The only downside to this removal is that you are now left with holes in the firewall that are required to be filled for most organized track events. Rennline's block off kit comes with 5 specifically cut and formed shapes that allow you to plug these irregularly shaped holes in a matter of minutes. Available in anodized aluminum or black powder coat, stainless steel hardware included.



BLOWER ASSEMBLY COVER

The word "Cardboard" and Porsche should not be used in the same sentence. Not to mention be used in the actual car. But they did, and now we have a solution. Rennline's Aluminum Blower Assembly Cover is a direct replacement of that cardboard eyesore that the factory installed in your car, constructed from anodized aluminum and utilizes the factory mounts. All stainless steel hardware required for installation is included.



SMUGGLER'S BOX COVER

Rennline Smuggler's Box covers are a direct replacement for your factory cover. Perfect for the light weight race car or the performance street car. This is an ideal set up for those of you who have already relocated your battery but need a clean way to finish off the project. All aluminum construction and a perfect location to mount a battery cut off switch. All covers come with all stainless steel hardware and new aluminum hinges.



Safety

H3R FIRE EXTINGUISHERS

These H3R Performance MaxOut fire extinguishers have a proven track record in smothering most types of fires likely to occur in an automotive environment. They feature high-quality steel cylinders with all-metal valve construction, and are available in chrome or red painted finishes. The H3R Performance MaxOut fire extinguishers are compact, lightweight, and easy to handle and use during a hazardous situation. In addition to their automotive use, these H3R Performance MaxOut fire extinguishers are also ideal for the home, garage, or office.



FIRE EXTINGUISHER MOUNTS

Fire extinguishers are mandatory in all cars that will see the track and should be mandatory in all street cars. There's no worse feeling then watching your car burn without the ability to do anything about it. Unlike most fire extinguisher mounts available, all of Rennline's mounts install directly to the factory seats and do not compromise seat travel or leg room in anyway. Constructed from aircraft grade aluminum and meets all requirements for racing series or other organized track events. Designed to be used with most standard 2.5lb fire extinguishers, all hardware and installation instructions are included. Available for both power and manual seats.





Safety

HARNESSES MOUNTS

These brackets have been specially designed to allow you to install both factory seat belts and aftermarket harnesses at the same time. Intended for the use of quick disconnect lap belts on both sides of the seat, this is a perfect set up for your street/track car. All brackets are designed to attach to the factory seat belt mounting locations so no drilling is required. Manufactured from tig welded 300 series stainless steel, comes with spacers, bushings and mounting hardware for most applications. Available in short, medium and long configurations.



SAFETY & TOW STICKERS

Rennline's safety sticker kit contains everything you need to indicate the vital safety devices on your car. Included in the kit are two stickers each for: left jack, right jack, jack up, jack down, right tow, left tow, vertical tow, electrical OFF, extinguisher, neutral engage, left rotate ON, right rotate ON, and one Rennline logo sticker.



Replacement Tow Stickers for all Rennline Tow Hooks. Available in red, black, yellow, blue, green or gray. Comes as a set of 2. Stickers only, tow hook not included.



Engine & Related

STAINLESS STEEL ALTERNATOR STRAP

On most older 911's, the cadmium-plated alternator housing strap looks worse for the wear - the plating has become dull or corroded. The factory alternator housing strap can't be replaced without removing the ignition distributor, which necessitates resetting the engine's timing. Rennline's new alternator housing strap solves both problems: the brushed stainless steel perforated strap can be left as is or painted the color of your choice, and its unique 3 piece design makes installation easy to accomplish without touching the distributor. Comes with stainless steel hardware.



NOTE: May 2010 New and Improved Design



BLOWER MOTOR BLOCK OFF PLATES

Removing the blower motor assembly from your 964/993 is a very standard modification for cars that want to lose a few pounds. This modification reduces your cars weight by about 10 pounds and really cleans up the engine bay. This kit is an exact replica as used by Porsche Motorsports for the factory lightweight 964 CUP and 964 RSR race cars. Manufactured from aluminum and is available in Red and Black Powder coat or clear anodized. Comes with all the stainless steel hardware required for a 20 minute installation. Will not work on Turbo cars.





Engine & Related

RS BLOWER BYPASS PIPE - CARBON FIBER

Rennline's blower motor bypass pipe is a carbon fiber replica of the factory installed unit found on the lightweight 3.6 RS race cars. This pipe allows you to save 9 pounds from the removal of the factory blower motor assembly, but still have a functioning heater system in your car. Manufactured from ultra strong, lightweight carbon fiber and comes equipped with the aluminum fitting for the distributor breather tube. Available with or without machined aluminum 3.6 (or 3.8) insignia plate at the top.



ENGINE AND TRANSMISSION MOUNTS

Solid engine and transmission mounts are a smart upgrade to any track or aggressive street car, and were installed on Porsche factory race cars. Stock mounts are made of compliant rubber, and contribute to imprecise shifting and inferior throttle response. Solid mounts are machined from 6061 aluminum and connect the engine and transmission assembly directly to the car's unibody, creating a crisper throttle response and shifter feel.



Semi-solid engine mounts are the perfect compromise between the stock rubber and solid mounts. The rigid polyurethane construction makes them ideal for performance oriented cars but still allows vibration absorption and noise associated with solid mounts. Installs in stock motor mount hangers replacing worn-out factory rubber.

PRECISION SHIFT COUPLER

This high quality, precision engineered coupler ends sloppy shifting caused by worn (and even new) factory couplers. Fabricated to exacting tolerances, the SR010 provides a precision feel and allows for accurate shifting. No more missed shifts during the heat of battle because of a sloppy factory coupler. The SR010 provides the precision and accuracy you demand when down shifting into that high-speed turn. No need to worry whether or not you are going to hit the wrong gear and over rev your engine. Shift with confidence, shift with precision.



RSR STYLE ENGINE CARRIER

Rennline's RSR style stainless steel engine carrier gives your engine compartment a vintage racing look, and is much stronger than the factory original, which was made out of flat mild steel. Features top and bottom flanges replicating the factory RSR race cars, gusseted mounting points built to withstand extreme horsepower and race abuse. This engine mount is by far the strongest engine carrier on the market today. Comes in a brushed stainless finish or a powder coated black or red finish. Engine removal is not necessary for installation.



964/993 ENGINE CARRIER REINFORCEMENT KIT

One of the weakest points on the 964 and 993 chassis is the engine carrier. When these models are tracked, or are fitted with stiffer than stock engine mounts, the engine carrier should be reinforced. If it is not, the carrier is known to bend, crack, or even break cleanly away from an engine mount in response to increased vibration and stress. The Porsche factory was aware of this problem and equipped its race cars with a reinforced engine carrier. Rennline now exclusively offers an engine mount reinforcement gusset kit that can be welded to the engine carrier by your shop or by us. Note: Complete assemblies are also available.



JACK PLATE

Rennline's powder coated jack plate allows for the safe and easy lifting of either side of your vehicle in the factory designated input below each door. This is an excellent item to have if you change your car's wheels frequently for track use, and dramatically improves the safety of lifting each side of your car compared to the factory supplied Bilstein jack. Designed to be used on all Porsches with the factory rocker panel jack receivers.



JACK PAD

Most newer cars have specific areas in the chassis designed for safely lifting the vehicle. These jack points require a pinned adapter that professional technicians use with their hydraulic car lifts. This jack pad locks into the car by simply turning the unit and is specifically designed to be used with most floor style hydraulic jacks. It's low profile design gives your jack sufficient clearance to slide under the car and then safely lifts it to minimize potential slippage. Comes with a rubber top pad to eliminate the undercoating of your car from being damaged. If you are using these pads with a car lift, you will need (4) units to properly lift the vehicle. All steel construction, water jet and tig welded seams with a powder coated red finish that will last forever. The OD of these is 3.52" and the ID is 3.15".



Electrical

LIGHTWEIGHT BATTERY MOUNT KITS

Mounting a lightweight battery into your Porsche is a standard modification on both track and high-performance street cars. The stock battery is much heavier than necessary, upwards of 40 pounds heavier than an Odyssey 680. Until now, mounting one of these lightweight batteries into a Porsche required fabricating your own mounting bracket system. Rennline's billet aluminum battery mount kits make mounting a lightweight battery an easy afternoon project. These kits are complete bolt in assemblies which require absolutely no drilling. Note: Switch, remote pull, smugglers box cover, and battery are not included with this or any of the kits.

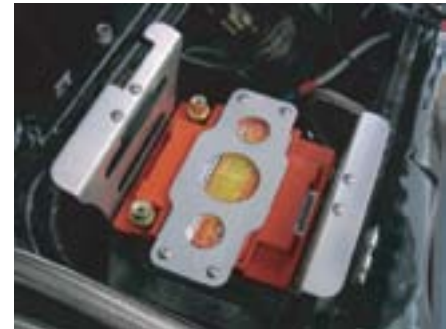




Electrical

BATTERY RELOCATION KITS

Relocating a lightweight battery to the smugglers box is a standard modification to track and high-performance street 911's. The stock 911 battery is much heavier than necessary (upward of 40 pounds heavier than an Odyssey 680), and is located in the front left of the car, where it contributes to poor weight distribution. Until now, relocating a battery to the smugglers box (the smugglers box is the small compartment in the front trunk behind the fuel tank, on the passenger's side) required fabricating your own mounting and bracket system. Rennline's relocation kit makes battery relocation an easy afternoon project. This is a bolt in assembly which requires absolutely no drilling and fully suspends the battery eliminating unwanted vibration. Available in standard or switch mount configurations. Note: Switch, remote pull, smugglers box cover, and battery are not included with this or any of the kits.



BRILLE LIGHTWEIGHT BATTERIES

"Lighter. Stronger. Faster."

Brille Battery is the pioneer of a complete line of lightweight, high-powered performance battery solutions, including the World's first automotive lithium starting battery. With a full line of Carbon Fiber, Lithium-Ion and advanced batteries using proven designs and advanced nano-particle technologies, Brille offers no compromises at any price point. Engineered for you, built in the USA and distributed globally.



ODYSSEY LIGHTWEIGHT BATTERIES

The ODYSSEY® Drycell battery combines in one box the characteristics of two separate batteries. It can deep cycle as well as provide enormous cranking power. These dry cell batteries are capable of providing engine cranking pulses in excess of 2150A for 5 seconds as well as 400 charge/discharge cycles to 100% depth of discharge (DOD). A typical starting, lighting and ignition (SLI) battery can do one or the other, but not both.



ODYSSEY BATTERY CHARGERS

Odyssey OMAX Ultimizer chargers are available in 12 amp and 25 amp designs. Designed specifically for Odyssey batteries, they ensure a fast, complete, and safe charge. They also feature a continuous trickle charge to keep your battery fully charged when not in use.



CABLES & TERMINALS

Rennline offers a full line of battery cables and accessories to make your lightweight battery conversion and seamless operation. Check out our website or give us a call with your specific application and we can get you the items that you need.



SWITCHES

These cut off switches are designed to eliminate the possibility of the alternator circuit being damaged due to a heavy voltage surge that can occur with the use of a heavy duty single circuit On/Off switch. When turned to the off position the engine will be automatically stopped due to the secondary switch function whereby the ignition is cut. This prevents engine 'run on' and is a vital safety factor especially in competition use. This switch is also a very simple and effective anti theft device for cars, trucks, boats and Ag. vehicles. We also offer the same style switch that Porsche installs on their factory cup cars. Whether you using the switch on the track or simply to isolate the battery during winter storage, a cut off switch is a useful accessory.



REMOTE PULLS

This is a mandatory item required by most organized race events. This remote pull allows corner workers to easily turn the power off on your car in the case of an emergency. Can be used on several different battery disconnect switches.

Available in:
T-Handle (red or black) or Loop Handle (red, black, green, yellow or blue)



Brakes & Wheels

CALIPER PAINT

Duplicolor High Temp Paint provides a durable, heat resistant, gloss coating specifically designed for cast iron or aluminum brake and engine applications. These durable coatings will beautify the brake calipers, drums and rotors as well as valve covers, engine blocks, etc., on specialty vehicles with a custom appearance. These innovative new colored coatings withstand 900°F temperatures (the white withstands 500°F), brake dust, salt and corrosion without losing its gloss luster.





Brakes & Wheels

CALIPER STENCILS

Don't waste your money on a set of caliper stickers that will melt the first time your brakes get hot, or fall off the second a pressure washer hits your calipers. Dress up your calipers the same way the factory does, with paint. These easy to use self adhesive stencils makes restoring your calipers a breeze. Just apply and spray using the paint color of your choice. Rennline recommends using VHT or Duplicolor high temperature paint. Each kit comes with (2) stencils.



CALIPER ADAPTORS

Installing larger brakes on your track prepared or performance street car is by far the most common upgrade performed, and an easy way to reduce your lap times. Your car came equipped with brakes that were designed for your cars factory horse power and factory handling characteristics. As soon as you add more ponies, wider tires or make suspension modifications, your brakes are now obsolete and will actually increase your track times. The easiest and most cost effective way to increase stopping power is to install a larger set of brakes which can be found on most newer, high performance Porsches. With that said, they won't just "bolt on". Adaptors will be required in most applications and now Rennline can help with our billet aluminum caliper adaptors. All kits come with the hardware and brackets to perform some of the more popular caliper conversions. Check us out on the web or give us a call with your specific conversion.



CUP CAR & GT3RS STYLE CENTER CAPS

To decrease time in the pits and maximize the time on track, the GT3 cup cars came equipped with high tech center lock wheels to allow for quick wheel and tire removal during pit stops. Now you can achieve the exact look and feel with most Porsche and aftermarket wheels. These beautifully CNC machined aluminum center caps will really set your wheels apart from the competition and give your wheels that Factory Cup Car styling for a fraction of the cost. This very unique three piece design bolts to your wheels from the inside making them impossible to become victims of theft, compared to the unsecured factory snap on units. Supplied in your choice of silver or black anodized finishes and come in sets of four.



WHEEL STUD KITS & LUG NUTS

Are you still using those factory aluminum lug nuts that are prone to cracking, stripping, and seizing up? Save the hassle and switch to these OEM steel nuts which are required for most organized track/race events.





Suspension

TRUSS MOUNT STRUT BRACE - 911

This system mounts like no other brace on the market. The billet aluminum mounting brackets have been formed to perfectly fit the contour of your 911's strut towers, making installation a breeze. These truss style brackets have been engineered in a way that makes this brace not only one of the lightest, but one of the strongest braces on the market today. The 3 point bracket has been engineered to utilize the same mounting studs used to attach the master cylinder bracket. This mounting area is one of the strongest points on the front of your 1977-89 911, giving you the optimum rigidity needed to eliminate camber change in hard cornering. There is absolutely no alignment alterations or drilling required for installation. Available in 2 point single, 2 point dual and 3 point configurations. Fits all 911/912/930's from 1965-89



MONOBALL MOUNT STRUT BRACE - 911

This strut brace is designed to work in conjunction with Rennline front monoballs, the 2-point strut brace is an excellent cost-saving alternative for owners who wish to maximize front trunk space. Our 3-point system attaches the same way as the 2 point with the exception of the third leg. Unlike other 3-point strut braces which anchor to flimsy trunk sheet metal, the diagonal bar of the Rennline brace bolts to the mounting studs used to attach the brake booster, which is one of the strongest locations on the front of a 1977-89 911. This brace requires no drilling to install, will not change your alignment settings, and is manufactured out of aircraft-quality aluminum with TIG welded stainless steel brackets. Both 2 and 3-point units are a true "bolt in" system that requires no drilling for all 911's with power assist brakes.



2 POINT STRUT BRACE - 911/964/993

One of the easiest and most cost-effective ways to improve your cars handling is the installation of a Rennline strut tower brace. These braces bridge both shock towers, eliminating virtually all camber change that occurs during hard cornering. Not all cars are the same, so Rennline has made their braces fully adjustable, allowing you to set a desired amount of pre-stress. Constructed of lightweight aircraft grade aluminum with stainless steel brackets, Rennline strut tower braces bolt in and out in minutes and require no drilling. Whether you're on the street or on the track you'll feel the difference immediately.



CAMBER ADVANTAGE - STRUT BRACE - 964/993

Accurate camber settings are a must for any track or performance street car. Adjusting camber from your camber plates usually requires a pry bar in one hand and your wrench in the other, giving you an end result of..... "close enough". Those days are over. Not only is this the industries first 3 point strut brace for the 964/993, it also has an integrated adjustment point that will allow you to fine tune, then lock your camber settings in a matter of seconds. This feature will eliminate the need to drill and pin your camber plates to insure that they will not move under extreme race conditions. This strut brace is available in both 2 and 3 point configuration and is constructed from aluminum and stainless steel. Note: Will operate with most adjustable camber plates. This 964/993 Strut Brace can be installed on cars without adjustable camber plates, however the adjustment feature will not be functional.



2 POINT STRUT BRACE - 986/996/987/997

One of the easiest and most cost-effective ways to improve your cars handling is the installation of a Rennline strut tower brace. These braces bridge both shock towers, eliminating virtually all camber change that occurs during hard cornering. Not all cars are the same, so Rennline has made their braces fully adjustable, allowing you to set a desired amount of pre-stress. Constructed of lightweight aircraft grade aluminum with stainless steel brackets, Rennline strut tower braces bolt in and out in minutes and require no drilling. Whether you're on the street or on the track you'll feel the difference immediately.



SEALED - ADJUSTABLE CAMBER PLATES

Under extreme conditions, such as road racing and Autocross, negative camber is required to keep as much of the tires contact patch on the road as possible. Stock suspension mounts will not allow you to achieve the necessary amount of Negative Camber required for this type of performance driving. Rennline's adjustable camber plates incorporate FK spherical bearings and eliminate the indistinct feedback associated with factory rubber mounts. Unlike other camber plates, a dust shield is supplied to eliminate water and debris from entering your car. To drastically increase bearing life, factory GT3 weather seals have been integrated. These camber plates are CNC machined from 6061 anodized aluminum and allow for up to 3.5 degree negative camber on most applications. Available for stock and aftermarket struts.



SEALED - SHOCK MOUNTS

Under extreme conditions, such as road racing and autocross, negative camber is required to keep as much of the tire's contact patch on the road as possible. Stock suspension mounts will not allow you to achieve the necessary amount of negative camber required for this type of performance driving. Rennline's sealed shock mounts incorporate factory GT3 weather seals and use FK motorsports spherical bearings to eliminate the indistinct feedback associated with factory rubber mounts.



MONOBALLS

Most 911 owners today, especially those of us who take our cars to the track, have equipped our Porsches with tires much wider and stickier than stock. This allows higher g-forces to be achieved when cornering or braking. During that type of hard driving, rubber suspension bushings are compressed and flexed by the extreme loads being put on them, defeating your car's finely tuned alignment settings thereby reducing your cornering and braking potential. Monoballs are a downside-free improvement because they eliminate four important sources of suspension slop without making your cars ride harsher. Your Porsche will handle and brake with greater precision, predictability and feedback to the driver.



ADJUSTABLE CONTROL ARM LINKS

Rennline adjustable control arm links are manufactured from 6061 aluminum and feature a turnbuckle design that allows each arm to be lengthened or shortened as needed to restore proper suspension geometry on a lowered car. The FK Motorsports Teflon-lined rod end bearings ensure precision handling and lock in your car's alignment settings, ensuring predictable cornering under all conditions. Unlike the competitors' product, Rennline arms come with eccentric locks and new hardware so you can completely eliminate the factory setup, which is known to go out of adjustment under hard driving and alter your car's alignment settings.



ADJUSTABLE DROP LINKS

- *Left & right hand threaded rod ends allow for simple length adjustment to eliminate sway bar preload.
- *FK Motorsports precision, teflon-lined rod-ends for smooth and quiet operation, long life, and high reliability.
- *Eliminates the compliant factory drop link bushings that deflect under loading and quickly wear out.
- *High misalignment, stainless steel spacers allow for superior bind free operation and corrosion resistance.
- *Precisely connects the stock or adjustable sway for improved feedback.
- *Overall length is adjustable to accommodate either stock or adjustable sway bar requirements.



SWAY BARS

- *These light-weight, hollow sway bars are half the weight of a solid bar with the same stiffness.
- *Complete with fully adjustable front drop links to eliminate suspension preload.
- *All necessary hardware is provided in zinc plated, metric class 8.8
- *Quick and easy sway bar stiffness to rate adjustment to fine tune your cars handling for various track conditions and driving styles.
- *All components are designed and manufactured to the highest quality standards, resulting in the finest and most reliable sway bar on the market.



HOLLOW TORSION BARS

If you're shopping for the best hollow torsion bars available, then Sander Engineering is the brand for you. Compared to solid bars of the same size, they're 25-30% lighter in the front and 35-40% lighter in the rear. In addition, they react more quickly than solid torsion bars because they don't have the center to slow their twisting motion. All in all, the Sanders Engineering Torsion bars pay off in reduced weight and reaction time resulting in both improved ride quality as well as improved handling characteristics. Available in several different sizes and sold as a pair.



SOLID SUB FRAME MOUNTS & TILT KIT - 993

Factory rubber suspension mounts have a lot of flex and cannot withstand the extreme loads applied to them during performance driving conditions. When these mounts flex, all of the suspension geometry changes making the car unstable and unpredictable. A very popular suspension upgrade is to replace these bushings with solid mounts like the ones on the factory race cars. These kits can be purchased as a Solid Sub Frame Mount Kit or as a Solid Sub Frame/Tilt Kit as found on the factory 993GT2 race cars.



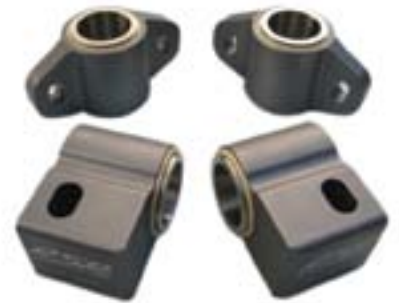
ADJUSTABLE BUMP STEER KIT

- * Allows Tie Rods to be adjusted downward in extra precise 1/32" (1mm) increments.
- * Teflon/kevlar lined, full length body, and capable of 30 degrees misalignment.
- * 14mm "tapered fit" 12.9 grade central shaft wedges itself into the steering arm just like the factory Porsche tie rod ends.
- * No drilling of the steering arm is required. Beware of the "other" kits using inadequate 7/16" bolts.
- * Machined stainless steel spacers.
- Castle nuts with cotter pins for safety and added confidence.
- Optional Full encapsulating weather/dust seals.



FRONT A-ARM BUSHING KIT

Front A-arm bushing kit provides a semi-solid and super low friction design intended for both street cars and fully dedicated track machines. Stainless steel inner races combined with the super low friction coefficient of the bushing sleeves, allows the spring and shock to function properly without having resistance from the old rubber bushings or undersized polyurethane types. This performance upgrade produces a more tunable, predictable, and comfortable front suspension and will last as long as you own the car.



Apparel

FUCH YOU & FUCH THE STREET...TRACK IT.

Available in short and long sleeve.



Front



Back

Fuch the street.....



Back



Apparel

RENNLINE - OLD SCHOOL - NEW SCHOOL

Available in short and long sleeve.



Front



Back

RENNLINE - R-CURVE LOGO

Available in short sleeve.



Front

RENNLINE - GASOLINE

Available in short sleeve.



Front



Front

LIFE IS FAST

Your model, color and race number. Available in short sleeve, long sleeve and sweat shirts.



Front

Life is fast.



Back

Life is fast



Back



Performance Parts and Accessories for Mini

Volume 1



Introducing the newest member of our family..... MINI.

SCREW-IN FOLDING TOW HOOKS

Rennline's folding race hooks have a 2" opening as required by most organized race events. Constructed from stainless steel and comes with a red tow sticker and a rubber bumper for the back side to insure your bumper cover will never get scratched from hook contact. Keep the corner workers and track officials happy by installing a set of hooks that are both highly visible and highly functional.

Note: These hooks are available with several factory threads (Porsche, Audi, BMW and Mini) or standard threads to be used with Rennline's universal and non factory mounting brackets.



TIE DOWNS

Rennline's tie-down brackets are made of steel and powder coated red. These brackets are available in four variations, flat, 90°, 66°, and 45° to allow you to install these brackets in many different locations based on your specific needs. Mounting hole measures 16.5mm. This is the same dimension as most shock mount bolts and several other suspension components.

The 66° tie downs are designed specifically for 996/997/Cayman and Boxsters. Note: These come in sets of 2



ALUMINUM FLOORBOARDS/PEDAL BOARDS

Give your Mini a bit of Rally/Race Car flare with these new aluminum pedal boards. These boards have been specifically designed for these cars and can be used with all factory carpet/floormats or Rennline Track Mats. Floorboards come with hardware and bracketry to install in either fully carpeted cars, or stripped full race cars. Installs in minutes and is available in silver anodize and black powder coat finishes.



ALUMINUM TRACK MATS

Rennline's Track Mats give your interior the purposeful look of a race car and are the perfect solution for protecting your interior from the wear and tear of track driving. The only aluminum floor mat of its kind on the market, Rennline's Track Mats are inspired by the floor design of factory race cars to provide drivers a smooth flooring surface that enables the quick footwork demanded of track driving. Rennline's Track Mats are constructed from lightweight anodized aluminum, weigh less than 38 oz, and are stamped with reinforcing ribs for strength. They fit precisely over the contours of your cars floor and affix with hook and loop fastener or can be permanently mounted if desired. Available in Silver or Black, front and rear.





Introducing the newest member of our family..... MINI.

ALUMINUM PEDAL SETS - RUBBER GRIP

Rennline's aluminum pedal covers are the ultimate interior upgrade for any performance automobile. No other gas pedal on the market gives you the flexibility of adding heel and toe throttle extensions and/or an adjustable lifter plate to fine tune your individual ergonomic preference. Our rubber grip pedals have replaceable rubber grips with a look and feel that puts them in a class of there own. All Rennline pedals are machined from aircraft grade aluminum with chamfered edges. Each kit comes with stainless steel hardware, replacement rubber grips and installation instructions. Available in silver(anodize) or black(textured powder coat), Sold individually or as sets.



THROTTLE PEDAL FOOT GUARD

When designing the mini, the engineer's didn't exactly leave any extra room between the throttle pedal and the center console. This lack of space, forces your foot to come in contact with the plastic console every time the throttle pedal is actuated, causing severe scratching and gouging almost immediately. Rennline's foot guard is a machined anodized aluminum accessory that will eliminate new scratches or hide existing ones. Available in Silver or Black finishes.



THROTTLE EXTENSION KIT

Need more width on your gas pedal? Rennline's throttle extension kit is what you are looking for. Depending on your driving style, this throttle extension kit can be used as a heel, toe, or heel/toe configuration. It's easy to install and is designed to be used with most Rennline gas pedals. Available in red, silver, or black.

All throttle extension kits come with both heel and toe extensions that can be used individually or together. Throttle pedal cover is not included with this kit.



THROTTLE LIFTER PLATE KIT

Need more height on your gas pedal? Rennline's adjustable lifter plate will solve the problem. This add on pedal accessory turns your standard Rennline gas pedal cover into a fully adjustable unit. This unique design installs in minutes and allows full height adjustment up to 1 inch. Not only does this lifter plate adjust the height but it also allows you to adjust the pedal angle in both lateral and longitudinal directions. This feature allows you to set the exact angle required to easily perform heel/toe maneuvers. Best of all, every adjustment is simply made from the 3 mounting screws on the face of the pedal.





Introducing the newest member of our family..... MINI.

ALUMINUM LOCK PINS

Aluminum lock pin sets are the perfect inexpensive interior upgrade for any Mini equipped with this feature, machined from 6061 aluminum and are available in silver or black anodized finishes. All kits come as a set of (2) lock pins and have black rubber trim rings installed. No tools required for this 5 minute interior upgrade, just pull off the undesirable factory plastic units and push these on. It's as simple as that.



ALUMINUM PEDAL SETS - RUBBER GRIP

Rennline's aluminum pedal covers are the ultimate interior upgrade for any performance automobile. No other gas pedal on the market gives you the flexibility of adding heel and toe throttle extensions and/or an adjustable lifter plate to fine tune your individual ergonomic preference. Our rubber grip pedals have replaceable rubber grips with a look and feel that puts them in a class of there own. All Rennline pedals are machined from aircraft grade aluminum with chamfered edges. Each kit comes with stainless steel hardware, replacement rubber grips and installation instructions. Available in silver(anodize) or black(textured powder coat), Sold individually or as sets.



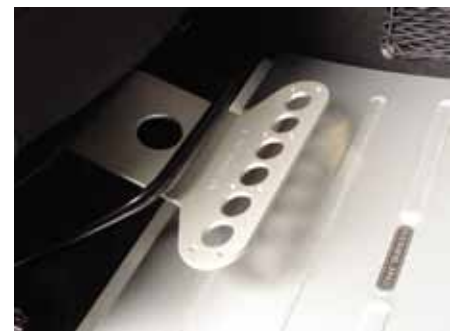
RS STYLE DOOR PULLS

Interior pull strap handles are factory installed on all Porsche RS models. The are light, functional and simply put.....sexy. Rennline has taken this design and intergrated it into many makes and models so that you can now share a bit of "RS" style in your interior. Each kit comes with complete replacement components that eliminate your factory handles and require zero to moderate modification of your existing handle surround. Available in several different colored straps.



FIRE EXTINGUISHER MOUNTS

Fire extinguishers are mandatory in all cars that will see the track and should be mandatory in all street cars. There's no worse feeling then watching your car burn to the ground without the ability to do anything about it. Unlike most fire extinguisher mounts available, all of Rennline's mounts install directly to the factory seats and do not compromise seat travel or leg room in anyway. Constructed from aircraft grade aluminum and meets all requirements for racing series or other organized track events. Designed to be used with most standard 2.5lb fire extinguishers, all hardware and installation instructions are included. Available in silver and black finishes.





Introducing the newest member of our family..... MINI.

H3R FIRE EXTINGUISHERS

These H3R Performance MaxOut fire extinguishers have a proven track record in smothering most types of fires likely to occur in an automotive environment. They feature high-quality steel cylinders with all-metal valve construction, and are available in chrome or red painted finishes. The H3R Performance MaxOut fire extinguishers are compact, lightweight, and easy to handle and use during a hazardous situation. In addition to their automotive use, these H3R Performance MaxOut fire extinguishers are also ideal for the home, garage, or office.



ALUMINUM SKID PAN/PLATE

A lowered ride height is a must for any car used on the track or for performance street driving. The biggest down side to this modification, is ground clearance. Speed bumps, pot holes or the occasional "Off Track" excursion can cause some serious damage to the underside of your car. Rennline Aluminum Skid Plates have been designed to eliminate those concerns. Unlike many skid pans on the market, Rennlines conceal the entire lower engine compartment and are formed so that no edges will get caught on objects when traveling forward, backwards or sideways. All of our skid pans are model specific to give you the ultimate fit and protection. Hardware and installation instructions are included with each pan for a hassle free install.



LIGHTWEIGHT BATTERY MOUNT KITS

Mounting a lightweight battery into your Mini is a standard modification on both track and high-performance street cars. The stock battery is much heavier than necessary, upwards of 40 pounds heavier than an Odyssey 680. Until now, mounting one of these lightweight batteries into a Mini required fabricating your own mounting bracket system. Rennline's billet aluminum battery mount kits make mounting a lightweight battery an easy afternoon project. These kits are complete bolt in assemblies which require absolutely no drilling. Note: Switch, remote pull and battery are not included with this or any of the kits.

