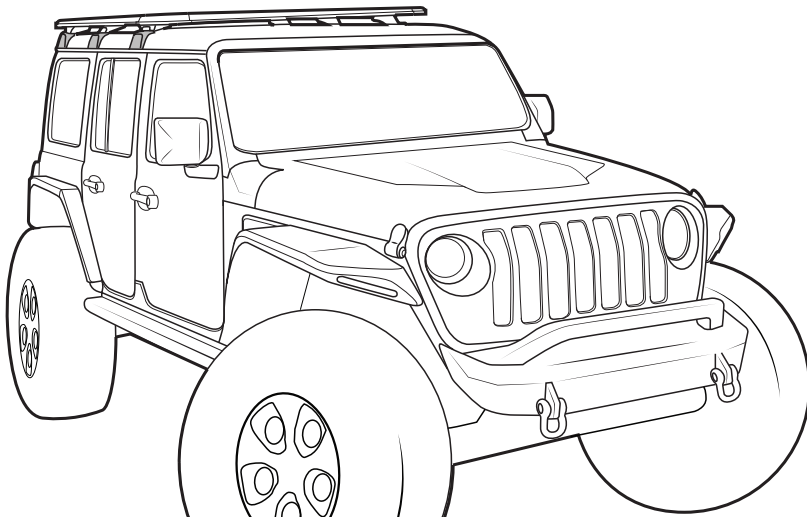




# RHINO-RACK

## Jeep Wrangler JL 4-Door Backbone - RJLB1

Fit Time: 2 Hour



### IMPORTANT INFORMATION

#### Maximum carrying capacity:

Suitable Systems	On Road Cargo Allowance	Off Road Cargo Allowance	Static Allowance	Roof Allowance	Rack Weight
42108B	86.5kg / 191lbs	62.5kg / 138lbs	326.5kg / 720lbs	120kg / 265lbs	33.5kg / 74lbs
45108B	81kg / 179lbs	57kg / 126lbs	321kg / 708lbs		39kg / 86lbs
3 Crossbars	99.5 / 219lbs	79kg / 174lbs	339.5kg / 748lbs		20.5kg / 45lbs

- Off Road:** Any driven path taken that is not on sealed (tarred / bitumen) and maintained
- Roof Allowance:** Total permissible weight attached to the roof of the car. This is inclusive of the weight of the roof rack system
- Cargo Allowance:** Total permissible weight allowed on top, and attached to roof racks whilst the vehicle is in motion
- Static Allowance:** Total permissible weight allowed on top, and attached to roof racks whilst the vehicle is stationary
- Load must be evenly distributed over the entire Pioneer. Weight of roof rack accessories is to be included in cargo allowance.

#### Torque settings

Unless stated otherwise in these instructions, all fasteners should be set to the following torque settings -

M6: 4-5Nm (3-4lbs/ft), M8: 8-10Nm (6-7.5lbs/ft) and M10: 16-18Nm (12-13lbs/ft).

#### Warning:

- Check the Rhino-Rack website to ensure you have the latest issue of the instructions
- Check Part No. and / or Kit is correct for use with your vehicle
- Do not attempt to fit the rack system to your vehicle unless you fully understand these fitting instructions. Please direct any questions regarding fitting to the dealer from where the roof racks were purchased.
- **Use only non-stretch fastening ropes or straps.**
- The handling characteristics of the vehicle changes when you transport a load on the roof. For safety reasons we recommend you exercise extreme care when transporting wind-resistant loads. Special consideration must be taken into account when cornering and braking.
- Although the system is tested and approved to AS1235-2000 / ISO 11154, off-road conditions can be much more rigorous. Extreme care must be taken in off road conditions

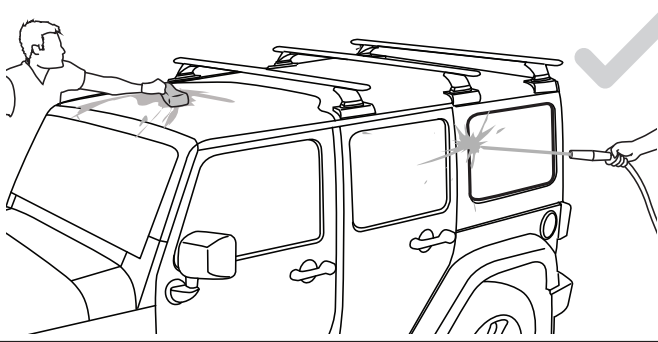
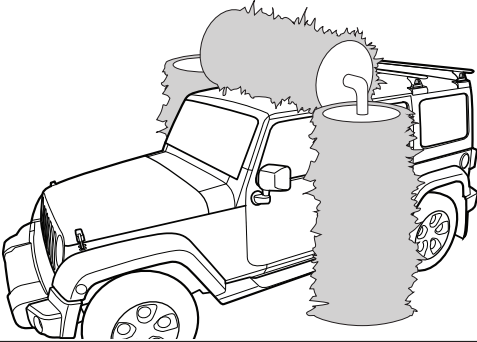
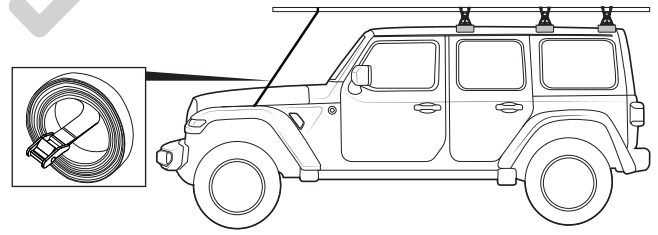
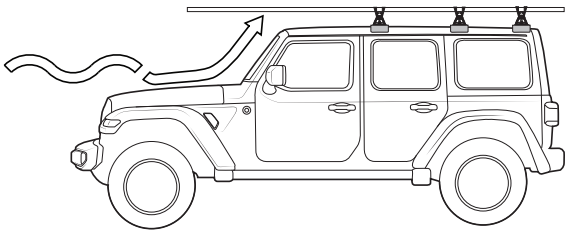
#### Recommendations:

It is essential that all bolt connections be checked after driving a short distance when you first install your roof racks. Bolt connections should be checked again at regular intervals (once a week is enough, depending on road conditions, usage, loads and distances travelled). You should also check the roof racks each time they are re-fitted. Always make sure to fasten your load securely. Please also ensure that all loads are evenly distributed and that the centre of gravity is kept as low as possible and must be entirely contained within the extents of the roof racks.

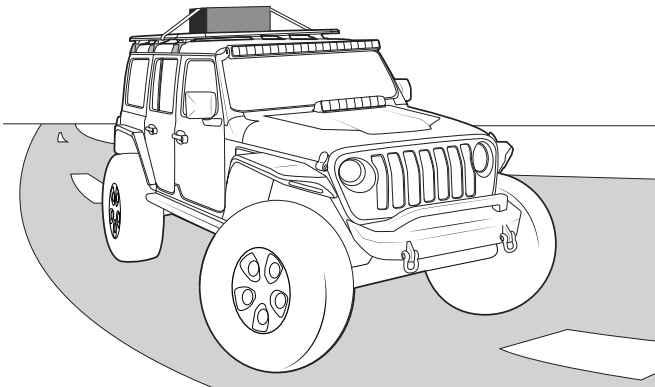
#### Note for Dealers and Fitters:

It is your responsibility to ensure these fitting instructions are given to the end user or client.

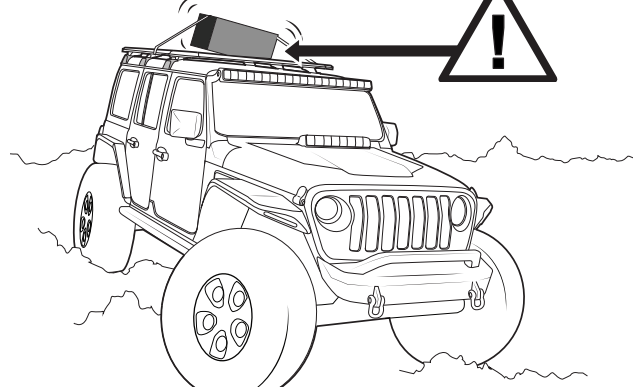
# Jeep Wrangler JL 4-Door - RJLB1



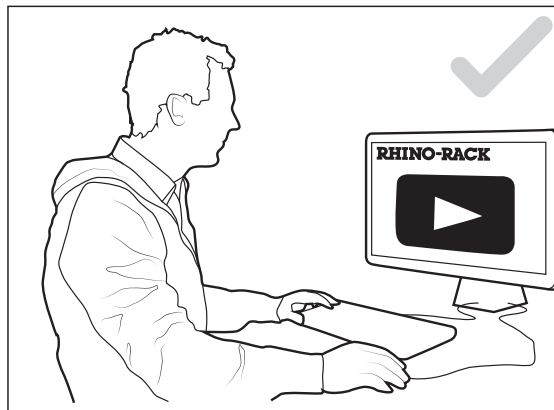
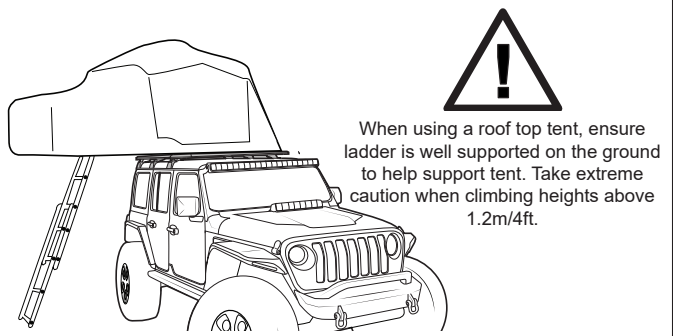
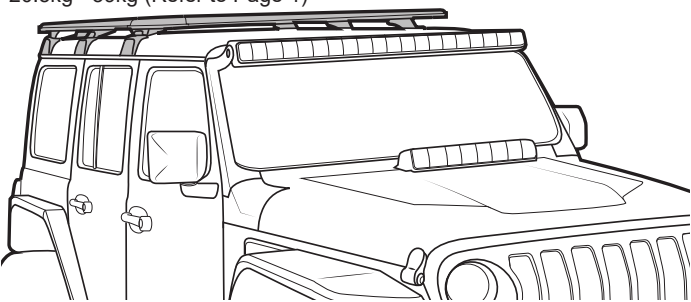
**On Road Cargo Allowance:**  
81kg - 99.5kg (Refer to Page 1).



**Off-Road Cargo Allowance:**  
57kg - 79kg (Refer to Page 1)



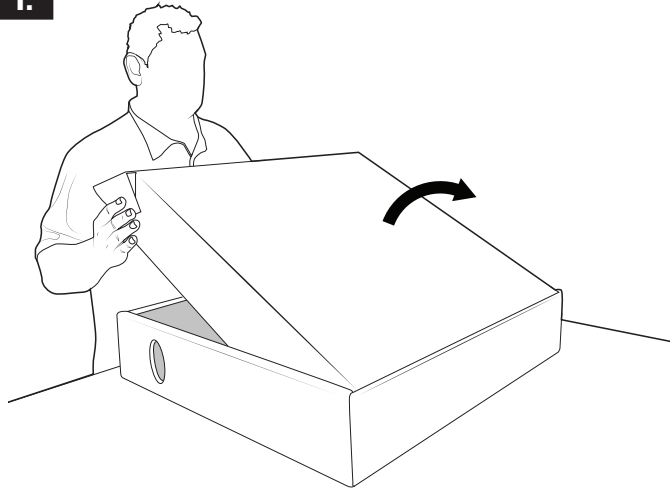
**System Weight:**  
20.5kg - 39kg (Refer to Page 1)



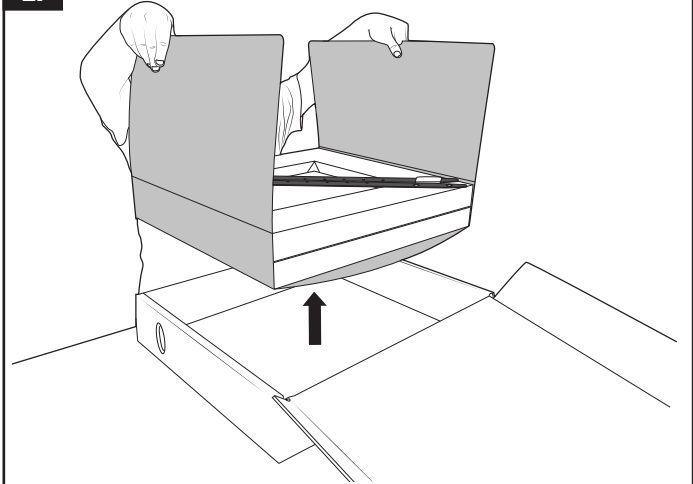
# Jeep Wrangler JL 4-Door - RJLB1

Prepare for Assembly. Prepararse para el montaje

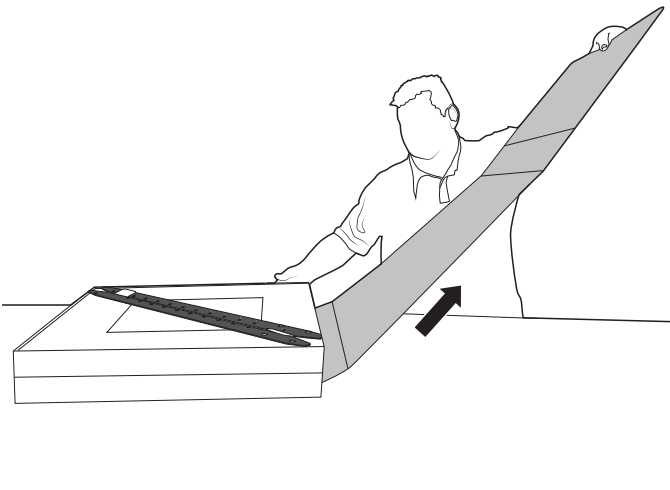
1.



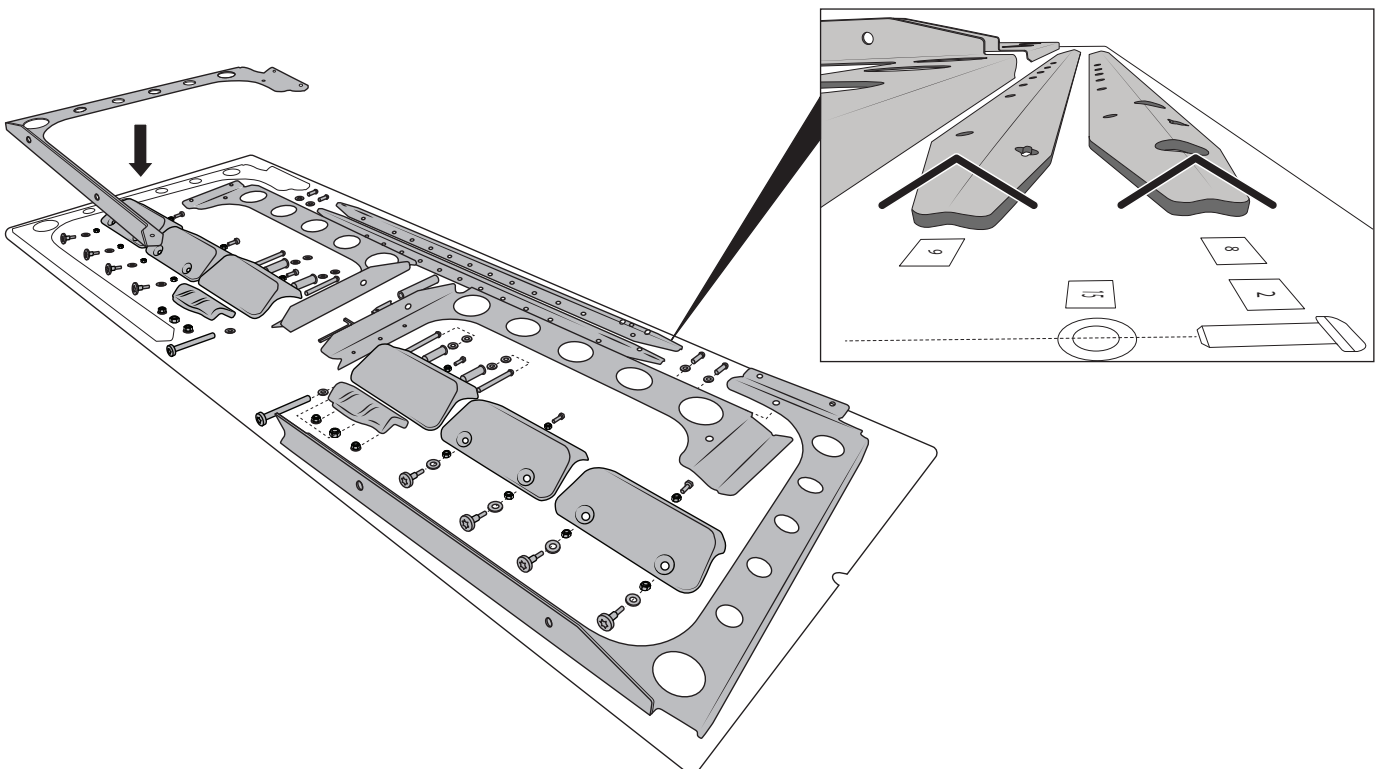
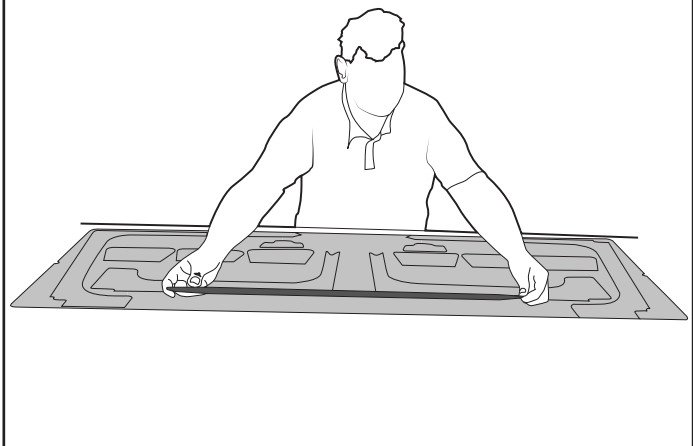
2.



3.

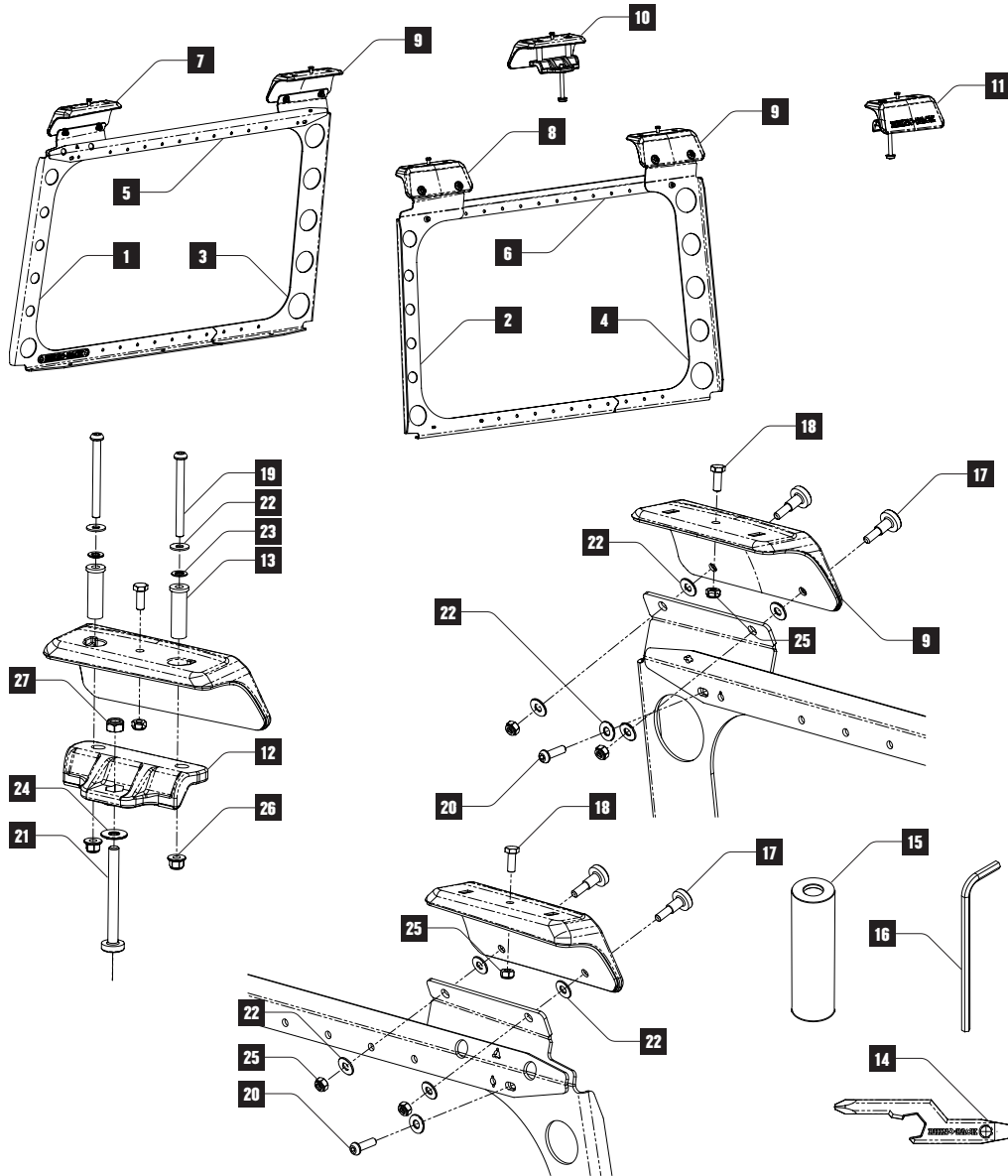


4.



# Jeep Wrangler JL 4-Door - RJLB1

## PARTS LIST



ITEM	DESCRIPTION	QTY	PART NO.
1	REAR LEFT UPRIGHT	1	CA1943
2	REAR RIGHT UPRIGHT	1	CA1942
3	FRONT LEFT UPRIGHT	1	CA1945
4	FRONT RIGHT UPRIGHT	1	CA1944
5	LEFT HORIZONTAL	1	CA1947
6	RIGHT HORIZONTAL	1	CA1946
7	REAR LEFT CASTING	1	SUB0808
8	REAR RIGHT CASTING	1	SUB0809
9	MIDDLE CASTING	2	SUB0807
10	FRONT LEFT CASTING	1	SUB0806
11	FRONT RIGHT CASTING	1	SUB0805
12	ROLLBAR CASTING	2	SUB0804
13	SPACER BUSHING	4	CA1939
14	SPACER MULTITOOL	1	CA1957

15	12.5MM DRILL STOP	1	CA1958
16	4MM ALLEN KEY	1	H049
17	M6 T50 SHOULDER BOLT	8	B276-BLK
18	M6 X 16 HEX BOLT	6	B168
19	M6 X 65 DOMEHEAD BOLT	4	B274-BLK
20	M6 X 20 DOMEHEAD BOLT	4	B277-BLK
21	M8 X 80 T50 DOMEHEAD BOLT	2	B275-BLK
22	M6 X 16 FLAT WASHER	24	W031-BLK
23	M6 RUBBER WASHER	4	W070
24	M8 X 21 FLAT WASHER	2	W020-BLK
25	M6 NYLOC NUT	8	N069-BLK
26	M6 FLANGED NYLOC NUT	4	N081-BLK
27	M8 NYLOC NUT	-	N043-BLK
28	INSTRUCTIONS	1	R1823

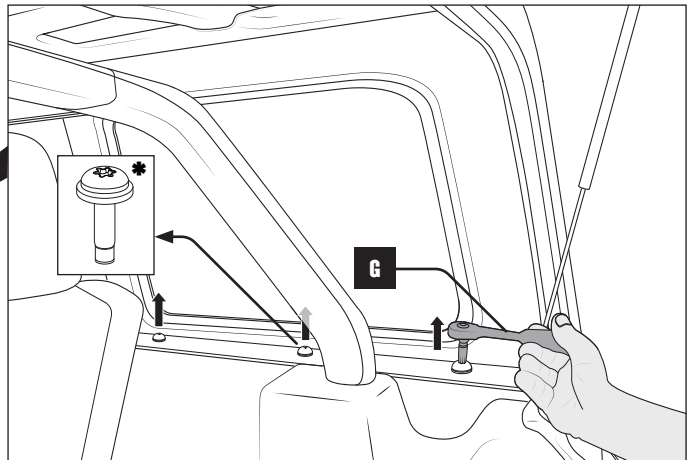
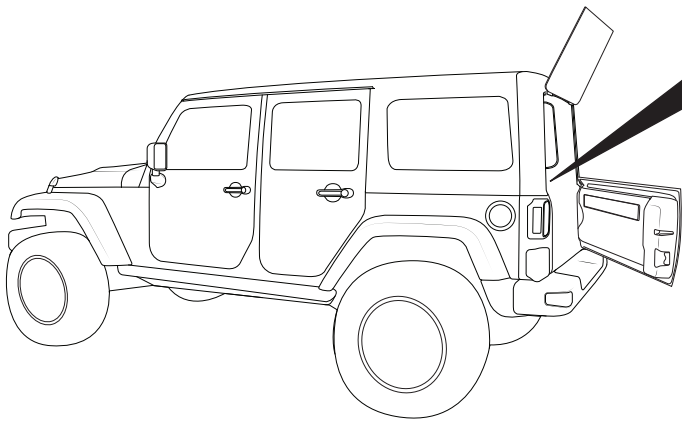
ITEM	TOOLS REQUIRED
A	POWER DRILL
B	12.5MM - 1/2" DRILL BIT
C	6MM - 1/4" DRILL BIT
D	8.5MM - 5/16" DRILL BIT
E	VACUUM
F	BUTYL MASTIC
G	T50 BIT (SUPPLIED WITH JEEP RATCHET TOOL)
H	PERSONAL PROTECTIVE EQUIPMENT

# Jeep Wrangler JL 4-Door - RJLB1

1.

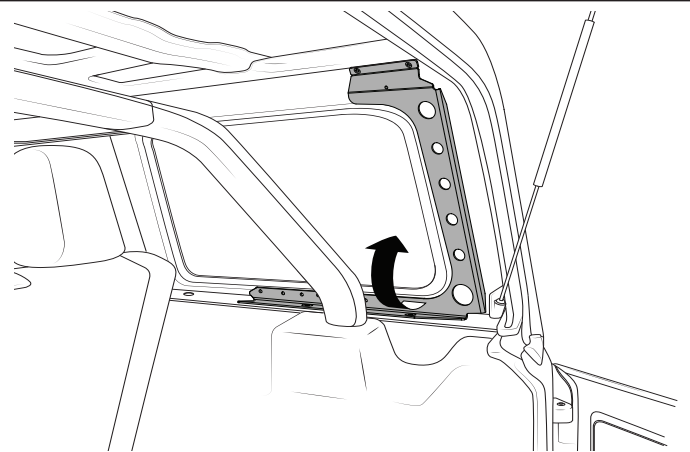
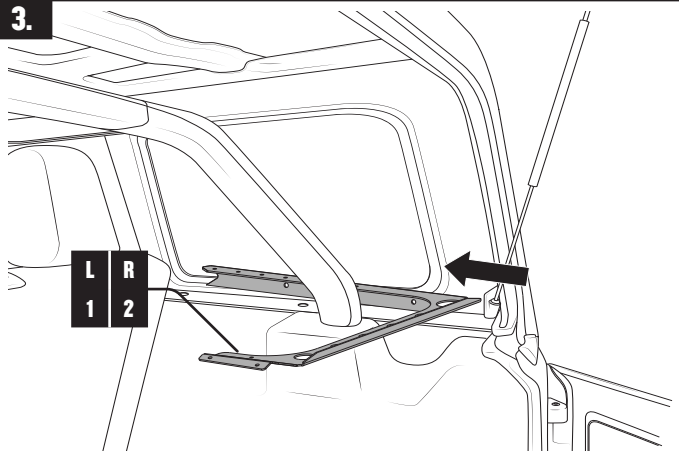


2.

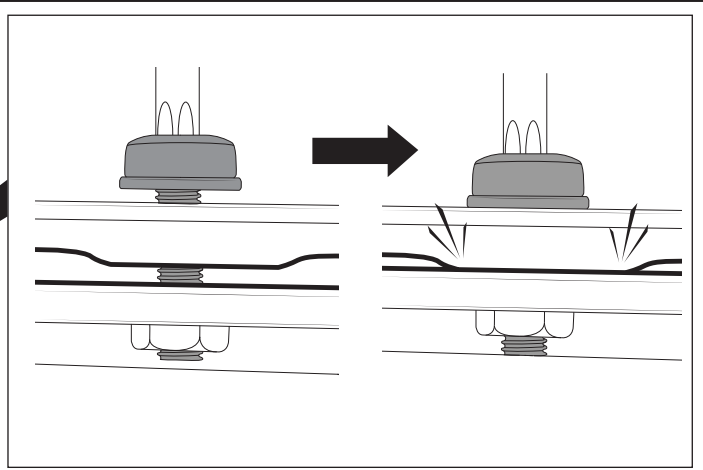
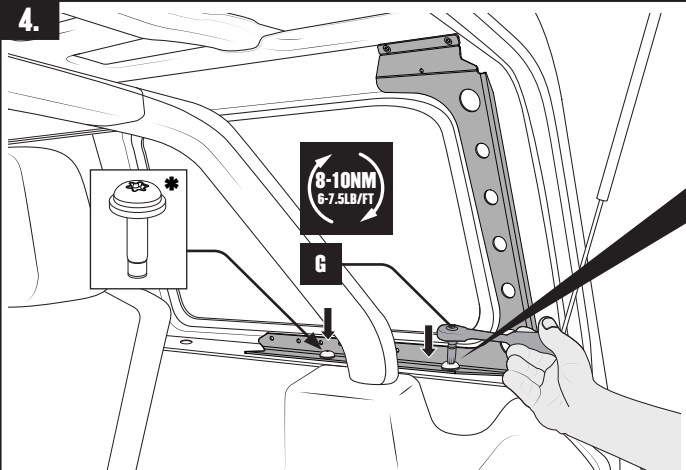


ITEM G = T50 BIT (SUPPLIED WITH JEEP RATCHET TOOL)

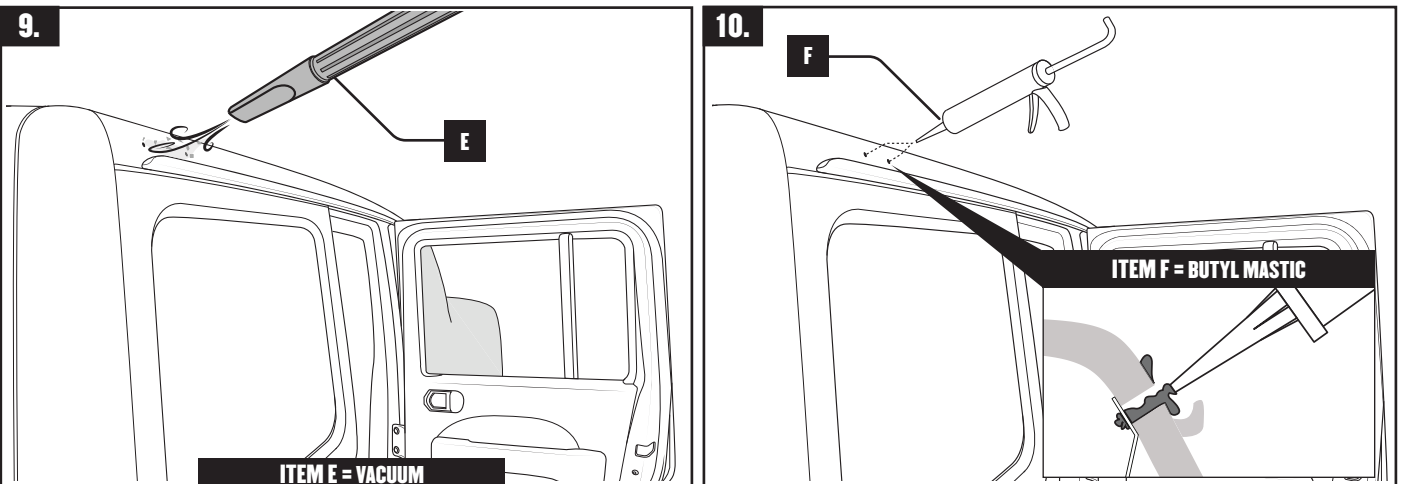
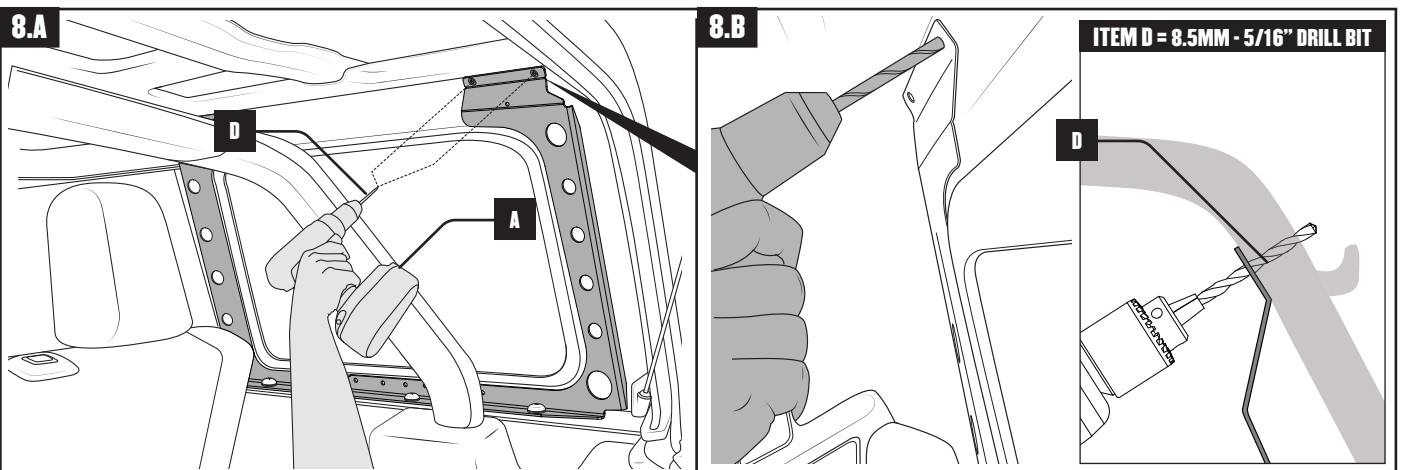
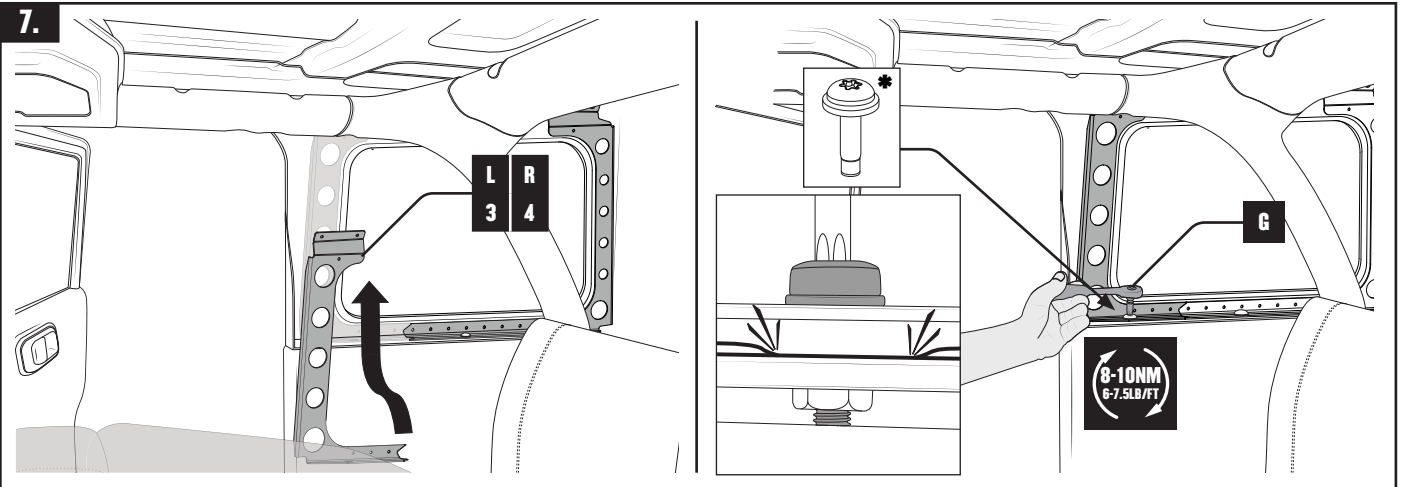
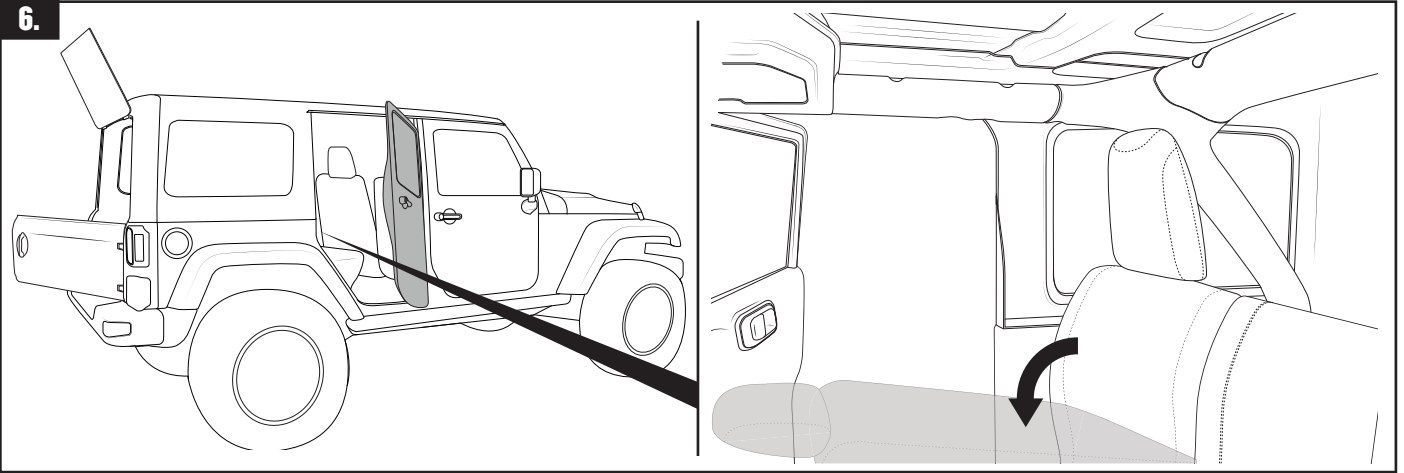
3.



4.

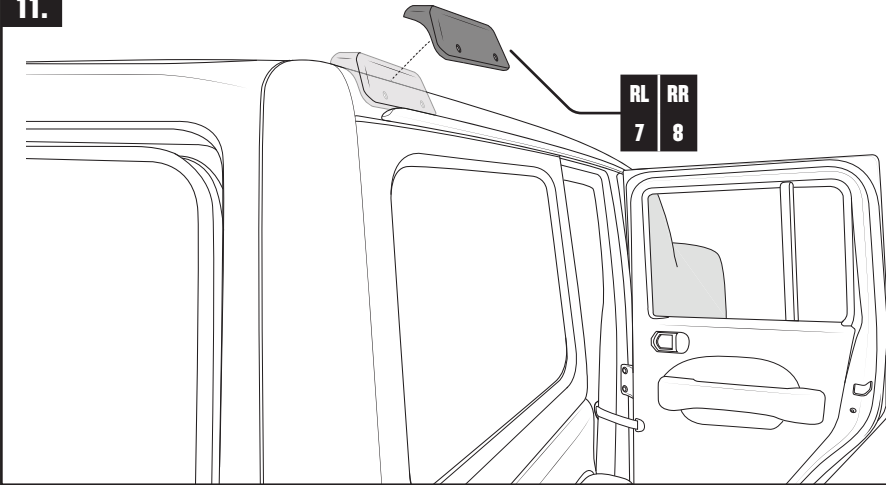


# Jeep Wrangler JL 4-Door - RJLB1

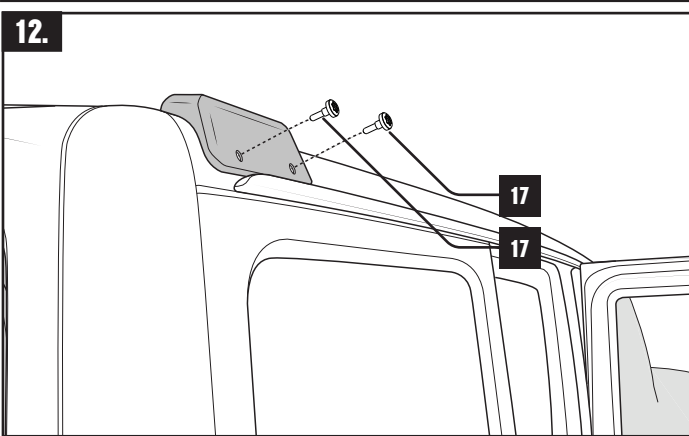


# Jeep Wrangler JL 4-Door - RJLB1

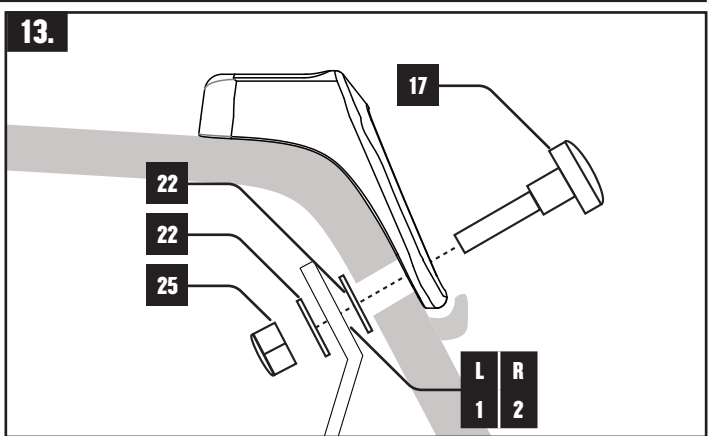
11.



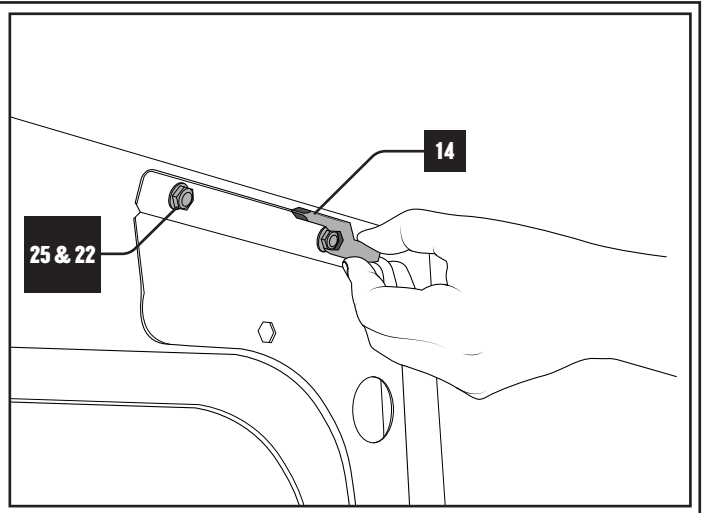
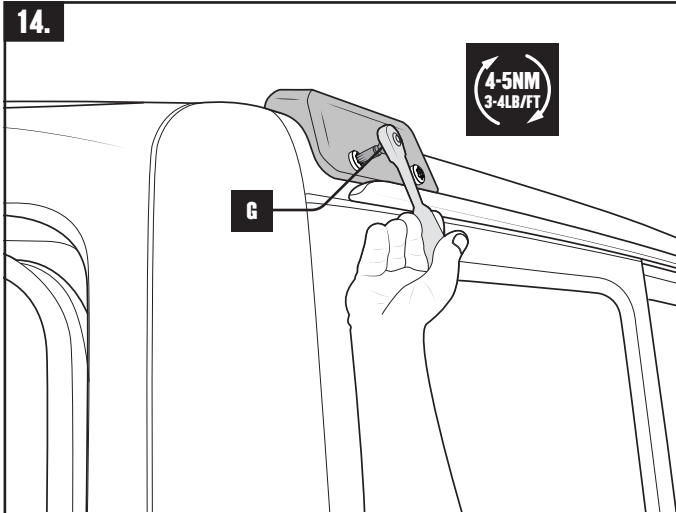
12.



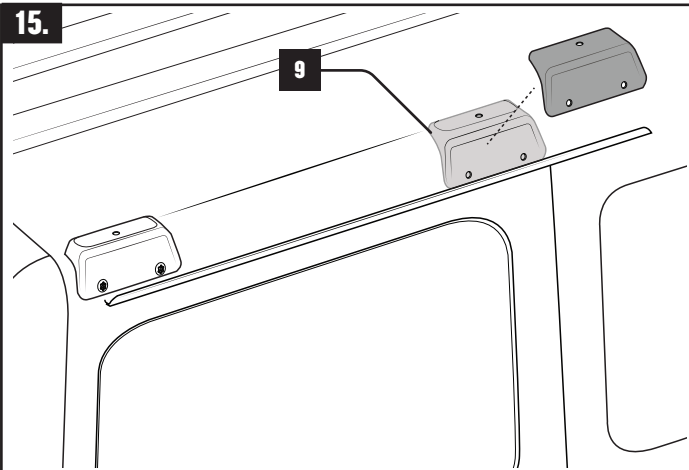
13.



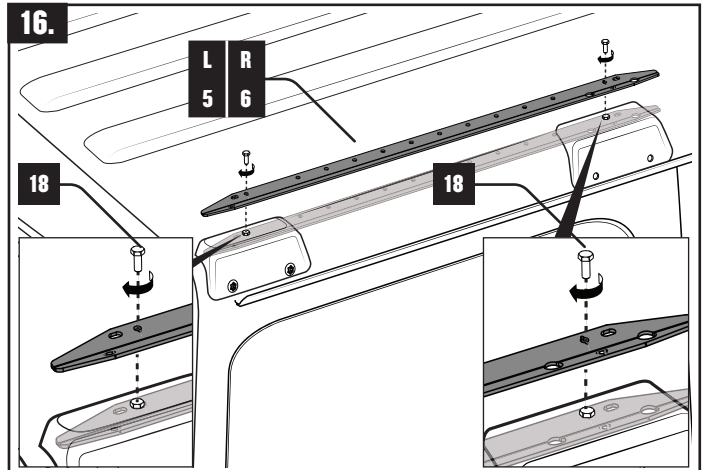
14.



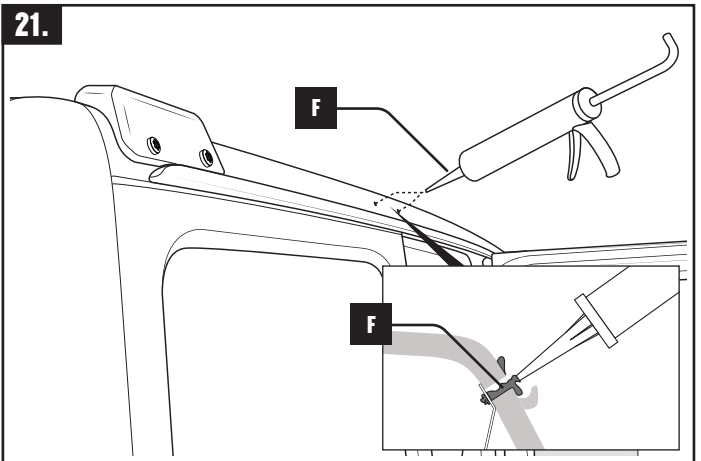
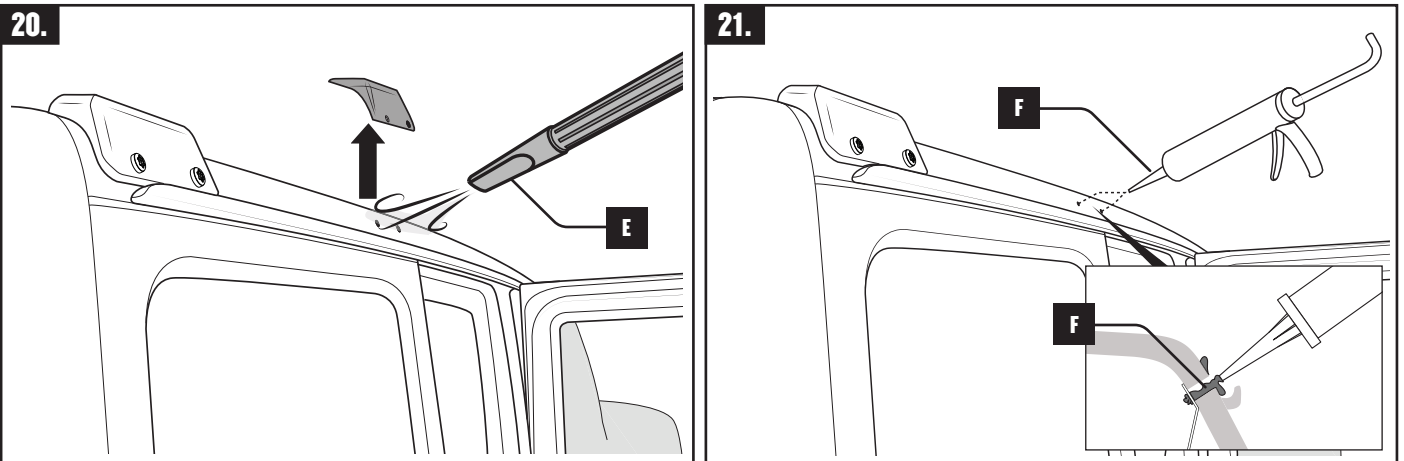
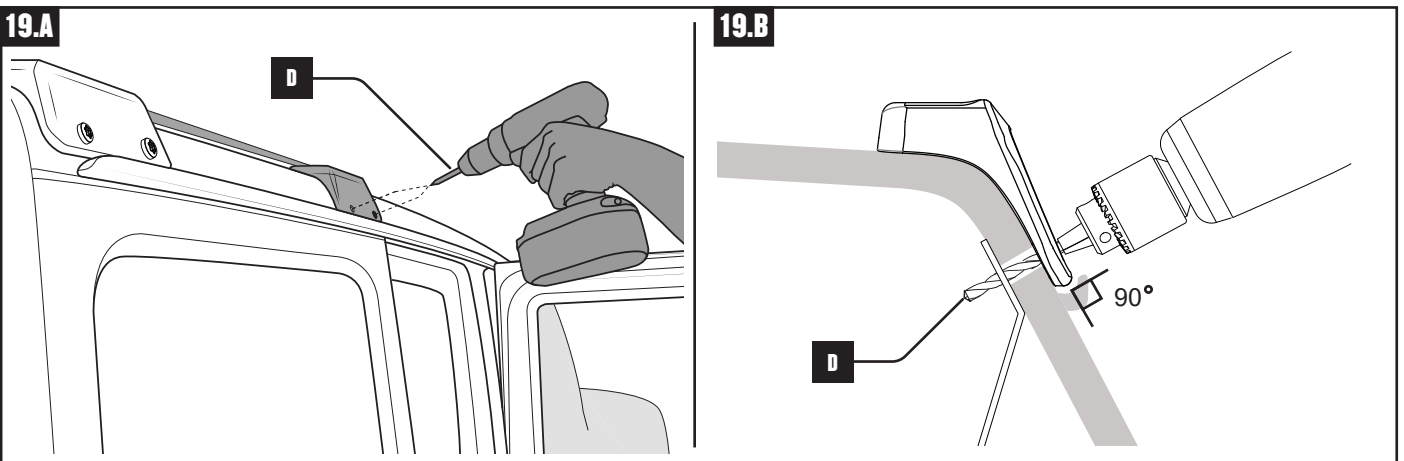
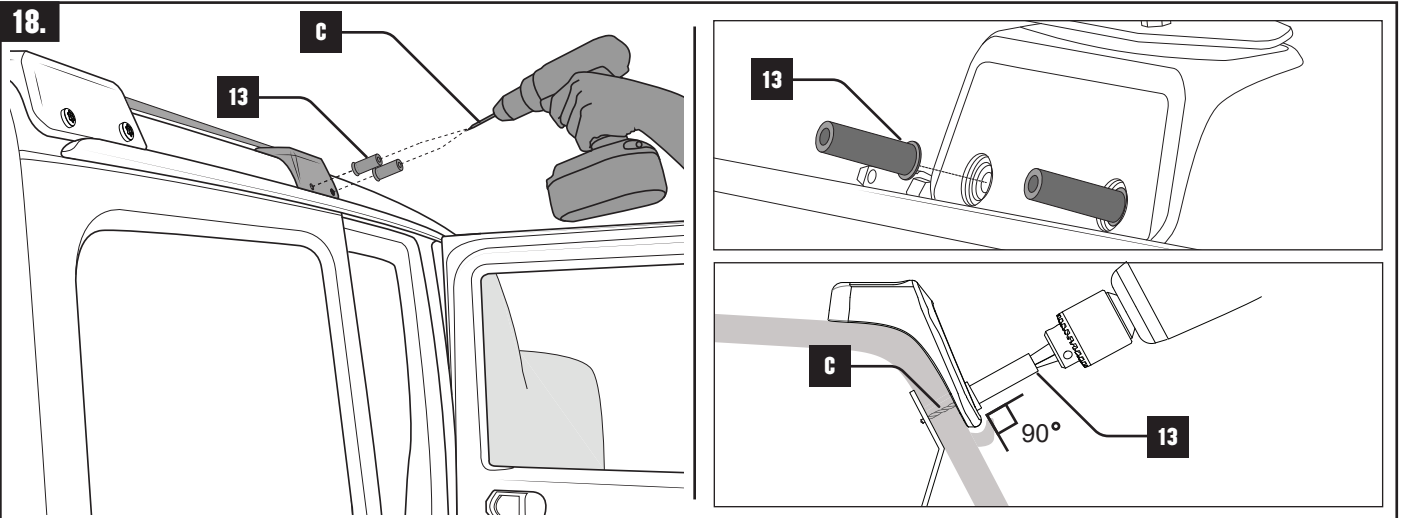
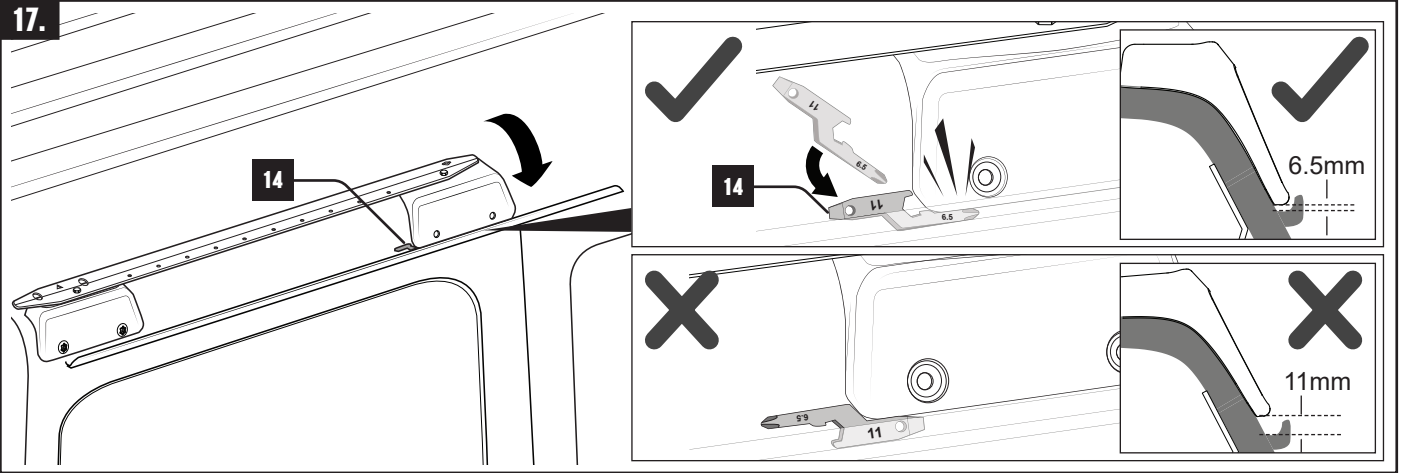
15.



16.

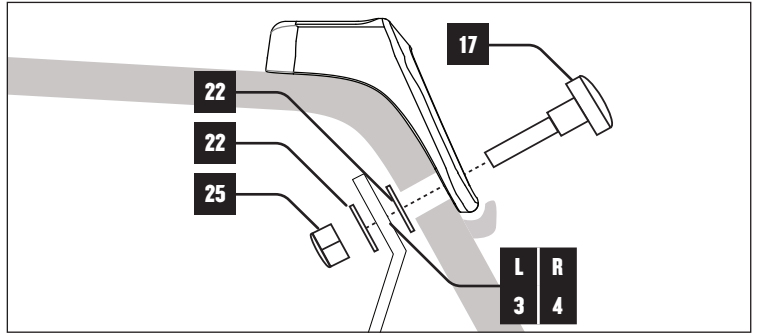
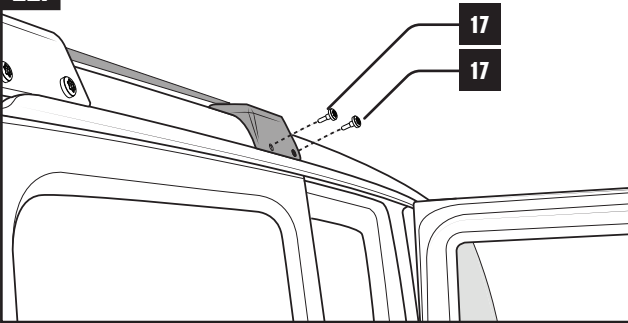


# Jeep Wrangler JL 4-Door - RJLB1

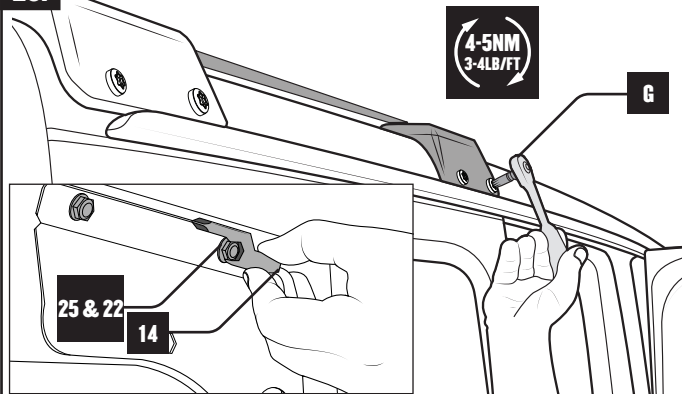


# Jeep Wrangler JL 4-Door - RJLB1

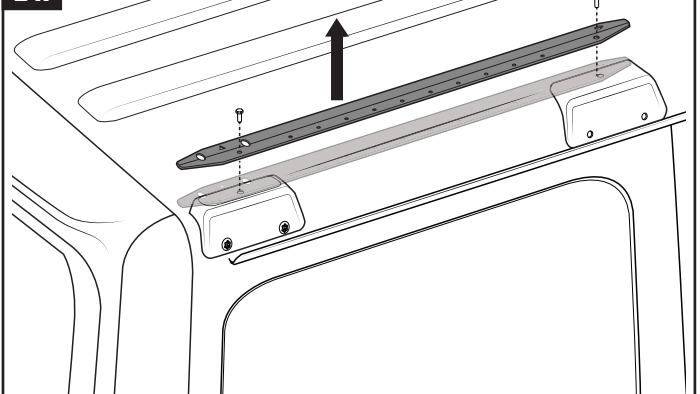
22.



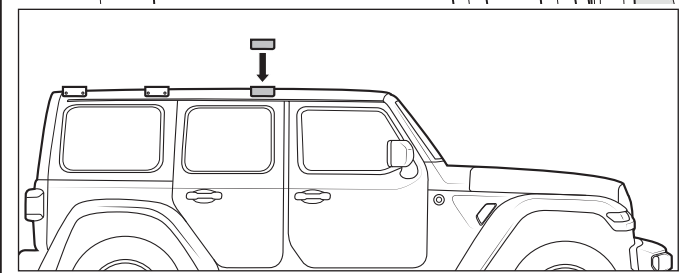
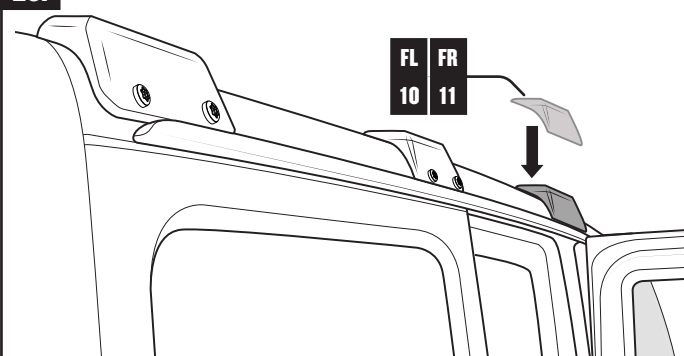
23.



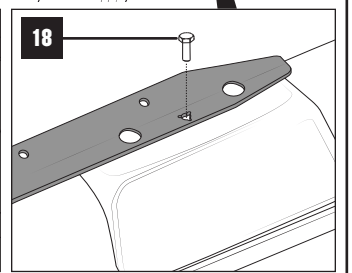
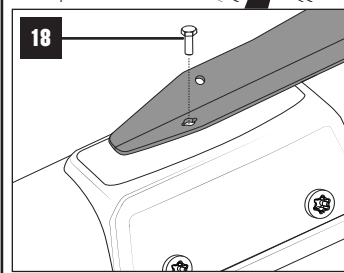
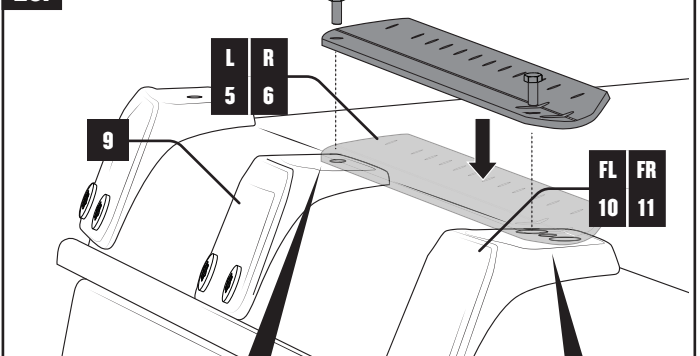
24.



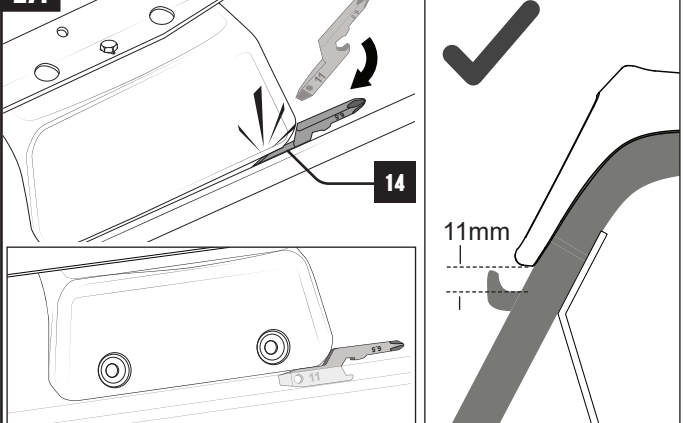
25.



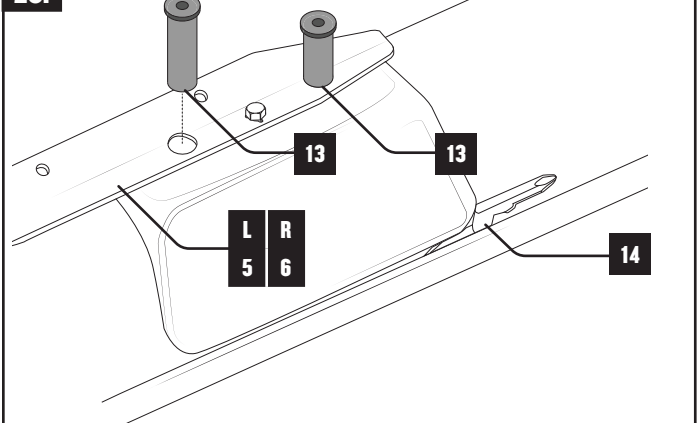
26.



27.

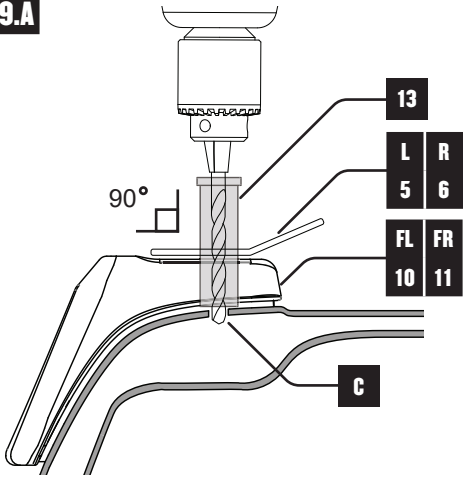


28.

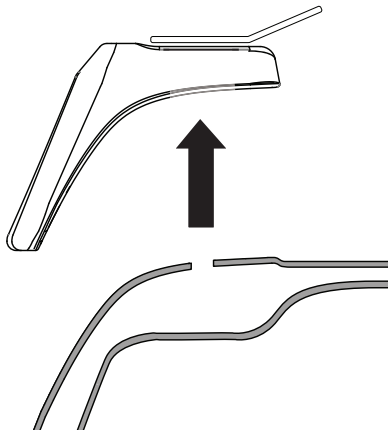


# Jeep Wrangler JL 4-Door - RJLB1

29.A

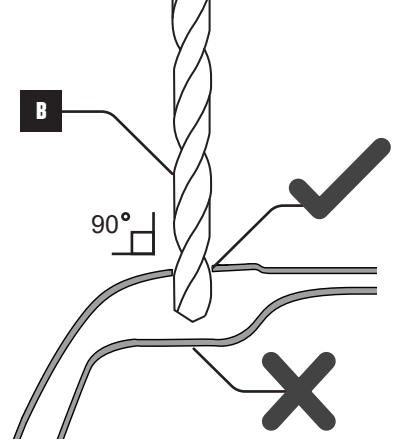


29.B

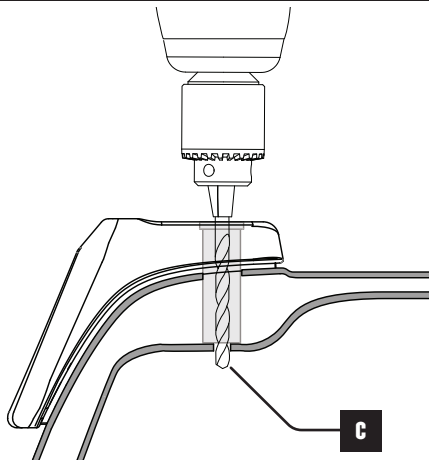


29.

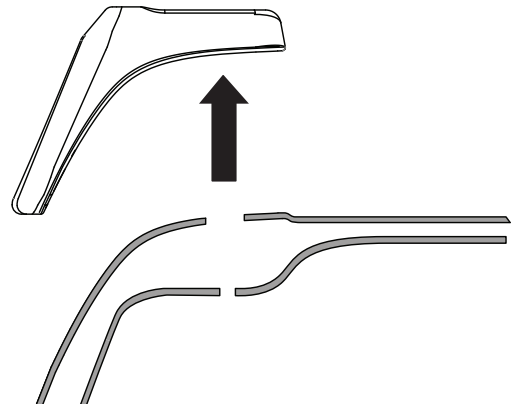
ITEM B = 12.5MM - 1/2" DRILL BIT



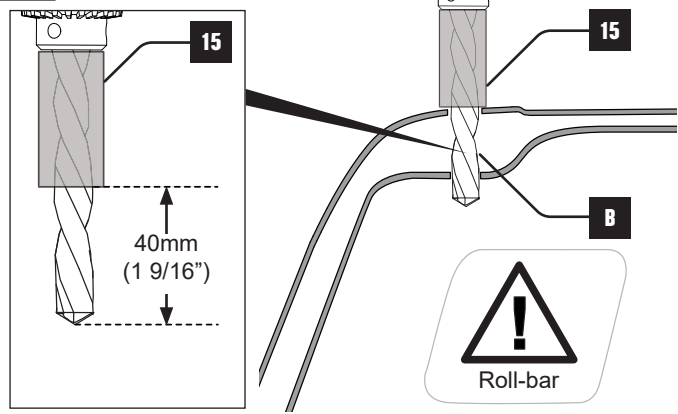
30.A



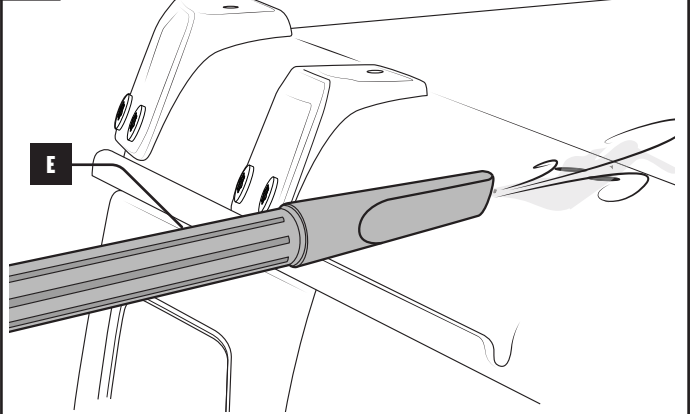
30.B



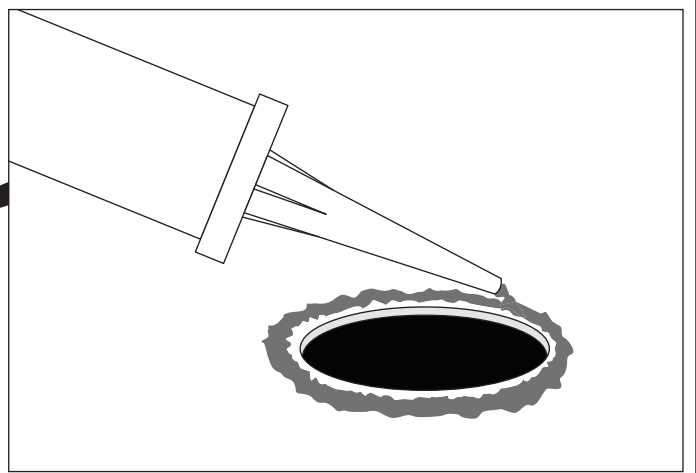
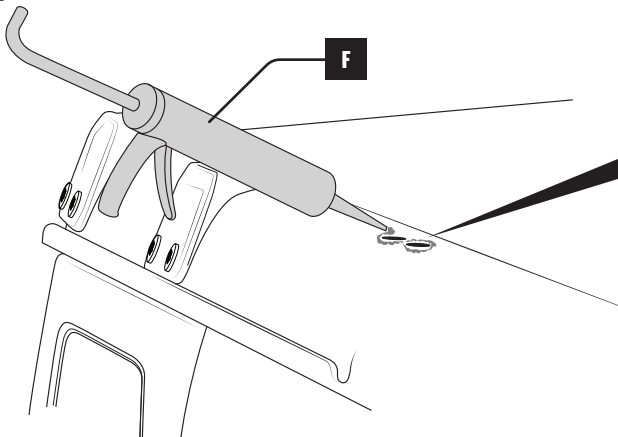
31.



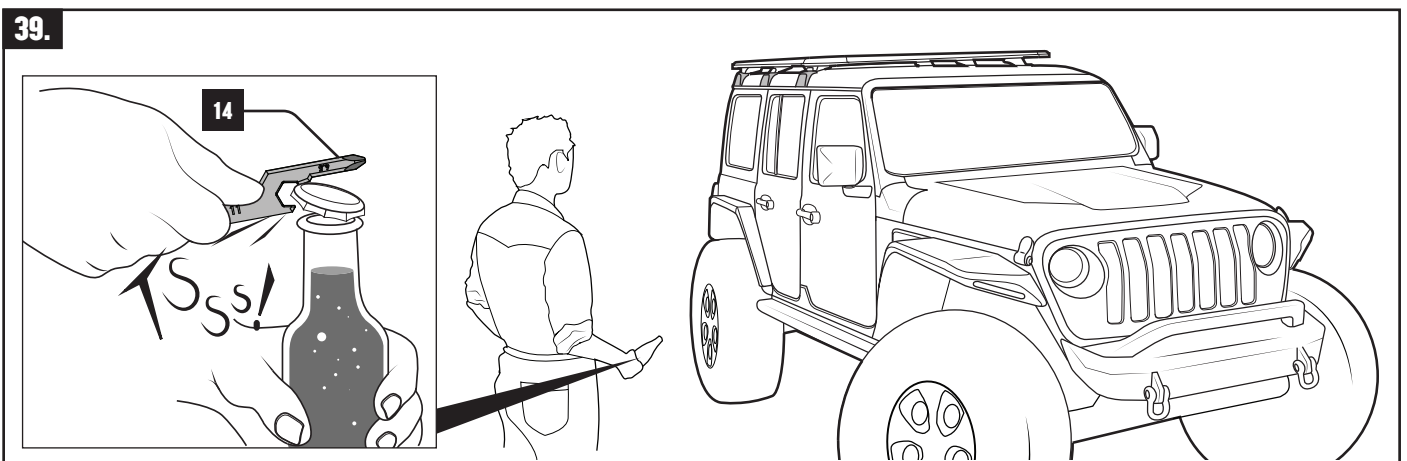
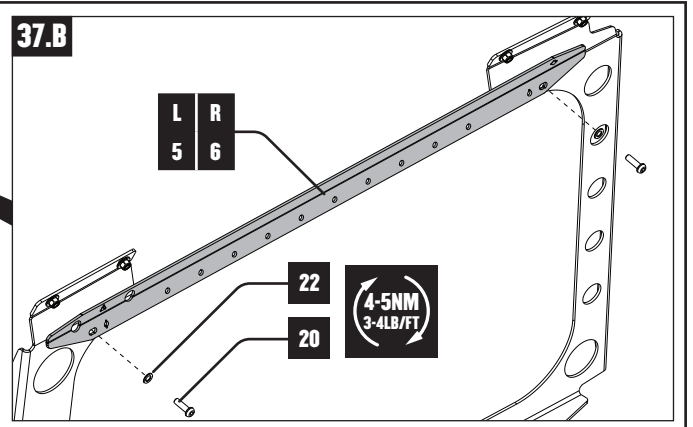
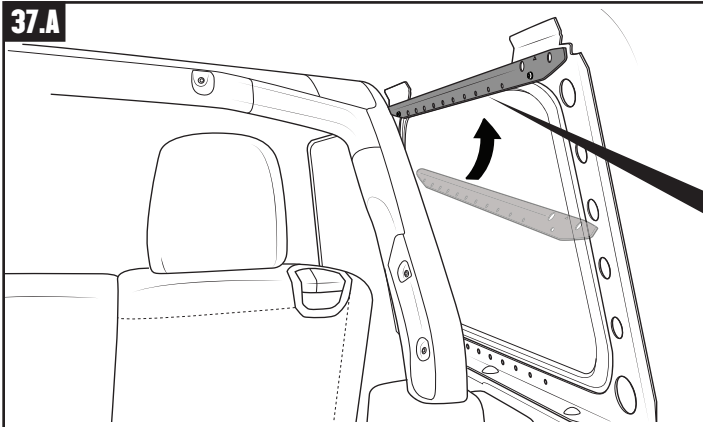
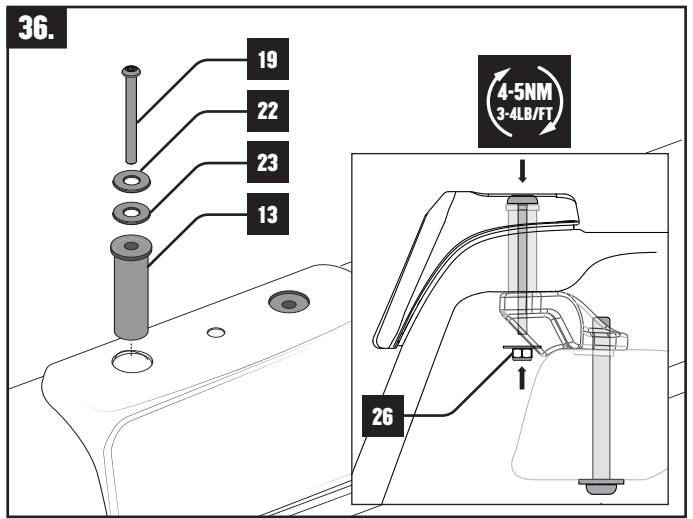
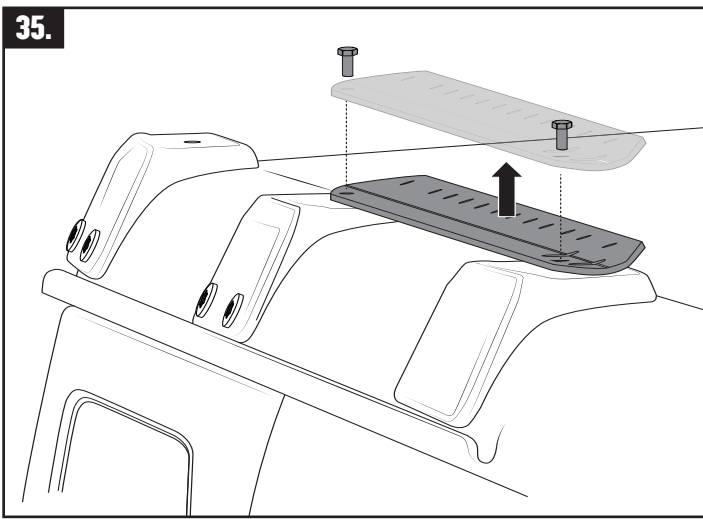
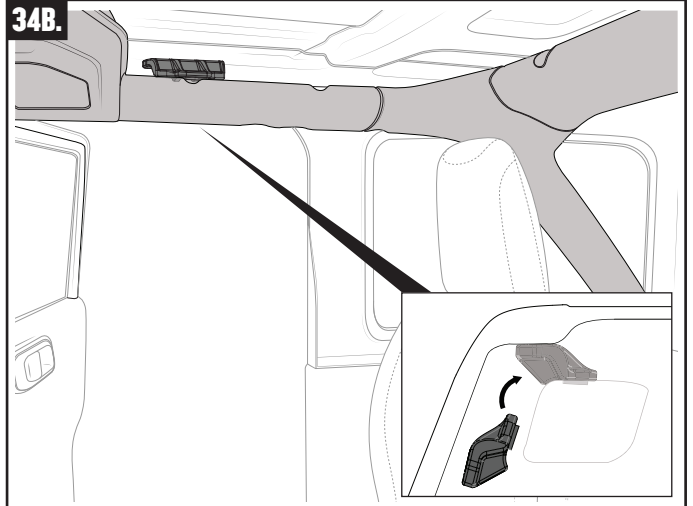
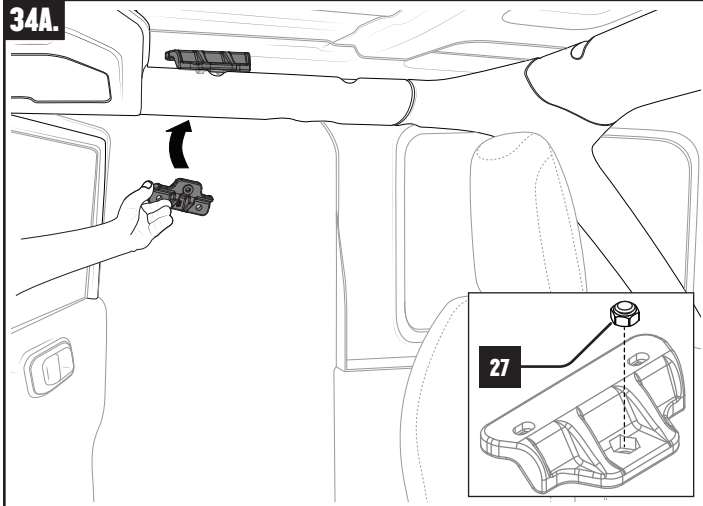
32.



33.

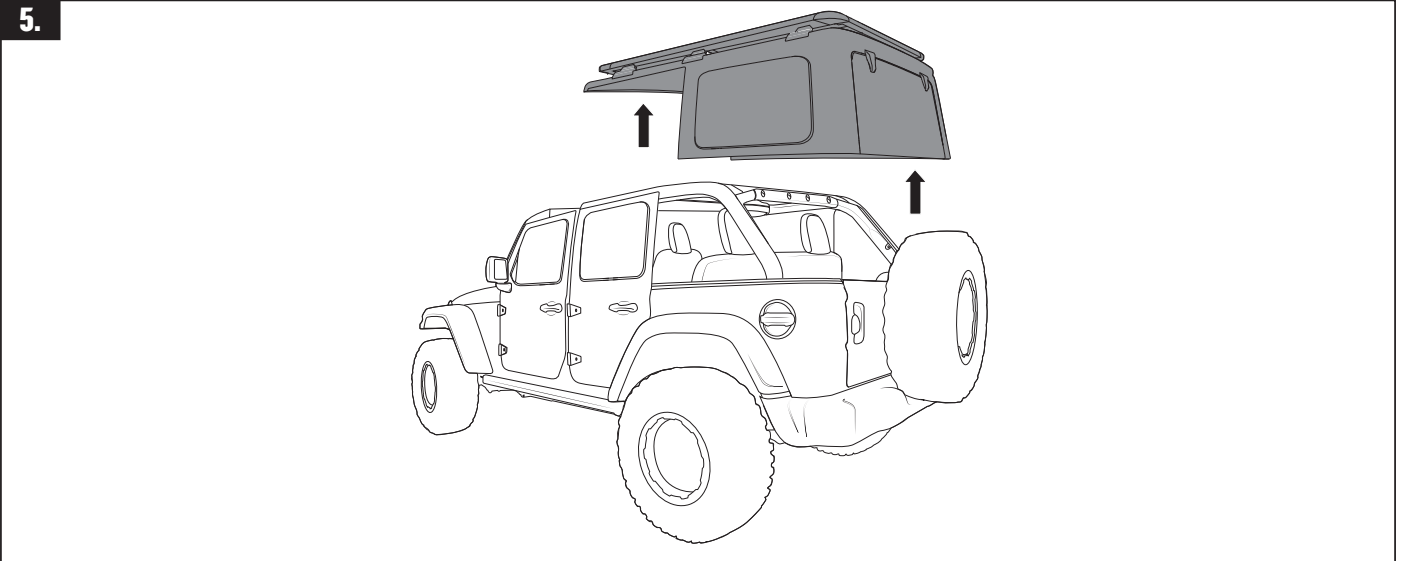
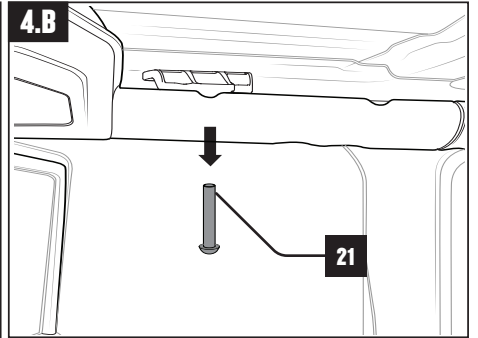
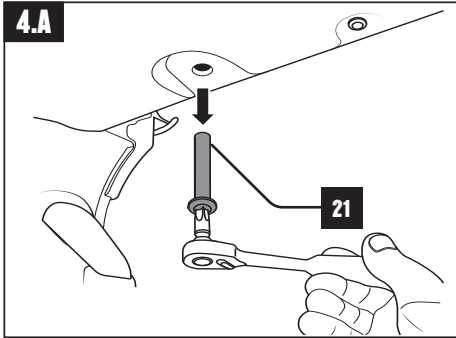
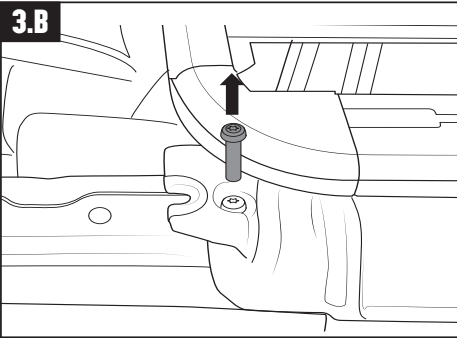
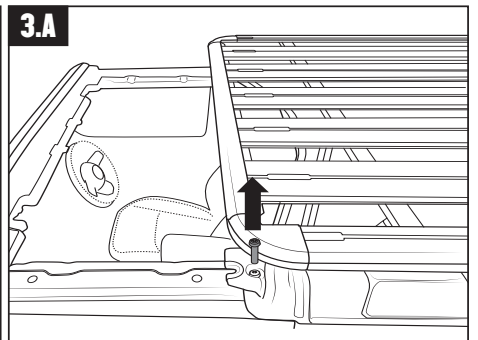
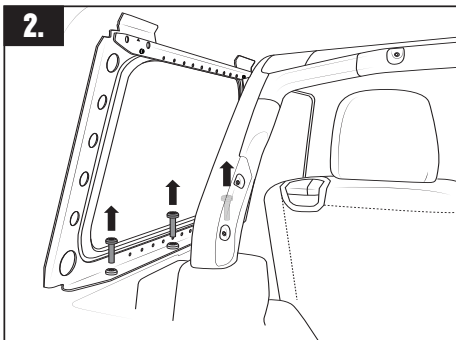
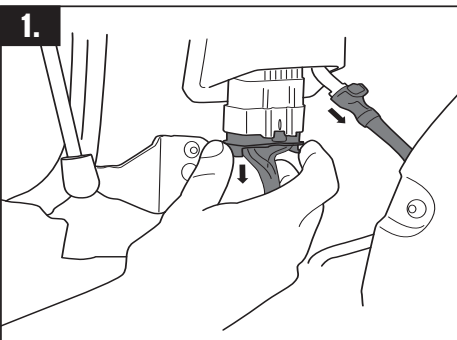


# Jeep Wrangler JL 4-Door - RJLB1



# Jeep Wrangler JL 4-Door - RJLB1

## REMOVING CANOPY AFTER BACKBONE FITMENT



# Jeep Wrangler JL 4-Door - RJLB1

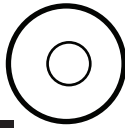
## 1:1 HARDWARE IDENTIFICATION CHART



**25** N069-BLK  
M6 NYLOC NUT



**26** N081-BLK  
M6 FLANGED NYLOC NUT

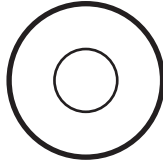


**23** W070  
M6 RUBBER WASHER

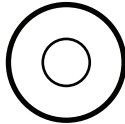
50MM



**27** N043-BLK  
M8 NYLOC NUT



**24** W020-BLK  
M8 X 21 FLAT WASHER



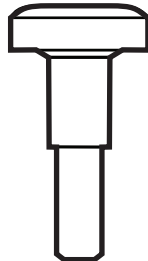
**22** W031-BLK  
M6 X 16 FLAT WASHER



**18** B168  
M6 X 16 HEX BOLT



**20** B277-BLK  
M6 X 20 DOMEHEAD BOLT



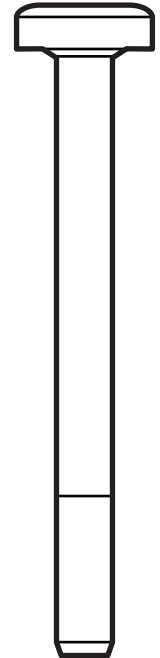
**17** B276-BLK  
M6 T50 SHOULDER BOLT



**13** CA1939  
SPACER BUSHING



**19** B274-BLK  
M6 X 65 DOMEHEAD BOLT



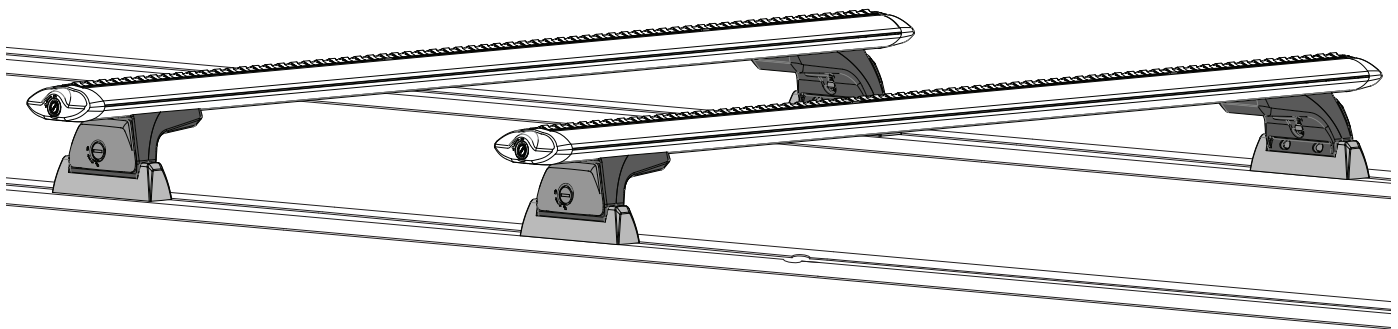
**21** B275-BLK  
M8 X 80 T50 BOLT



# RHINO-RACK

## Quick Mount Track Legs RLT600

- Important:**
- 1. Please refer to your fitting instruction to ensure that the roof racks are installed in the correct locations.
  - 2. Check the contents of kit before commencing fitment and report any discrepancies.
  - 3. Place these instructions in the vehicle's glove box after installation is complete.
  - 4. These instructions must be followed for warranty to be upheld.



### Important Information

**Load ratings:**

Maximum permissible load for system is up to 95kg per pair of crossbars. When crossbars are to be used in off-road conditions, please build a safety factor of 1.5 into this load limit. Although the crossbars are tested and approved to AS1235-2000, off-road conditions can be much more rigorous. However, increasing the number of crossbars does not increase the vehicles maximum permissible roof loading.

**Please refer to your vehicle manufacturers handbook for the maximum roof loading allowable for your make and model vehicle. Always use the lower of the two figures**

On Road Cargo Allowance	Off Road Cargo Allowance	Roof Allowance	Rack Weight
95kg / 209lb	63kg / 138lbs	100kg / 220lbs	5kg / 11lbs

It is essential that all bolt connections be checked after driving a short distance when you first install your crossbars. Bolt connections should be checked again at regular intervals (probably once a week is enough, depending on road conditions, usage, loads and distances travelled). You should also check the crossbars each time they are re-fitted.

Make sure to fasten your load securely. Ensure all loads are evenly distributed and centre of gravity is kept as low as possible.

**Use only non-stretch fastening ropes or straps. Clean roof prior to installation.**

**Caution:** The handling characteristics of the vehicle changes when you transport a load on the roof. For safety reasons we recommend you exercise extreme care when transporting wind-resistant loads. Special consideration must be taken into account when cornering and braking.

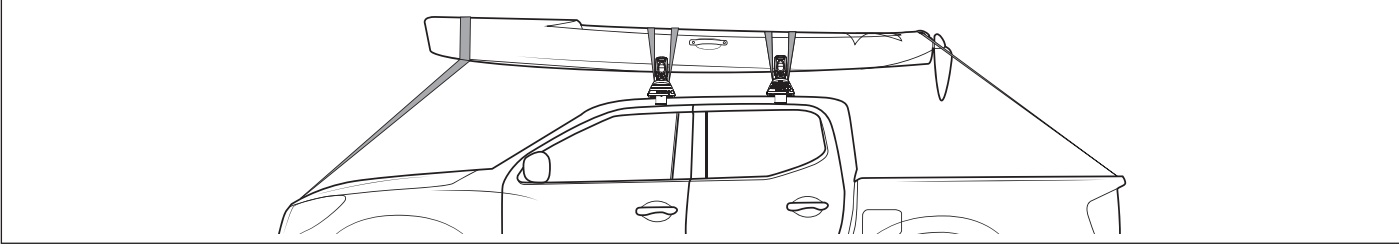
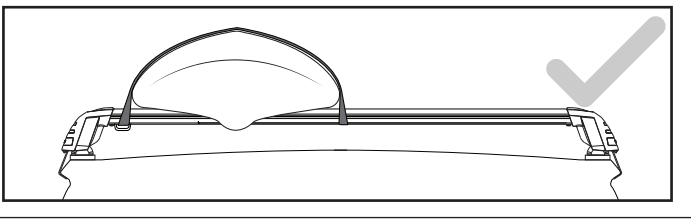
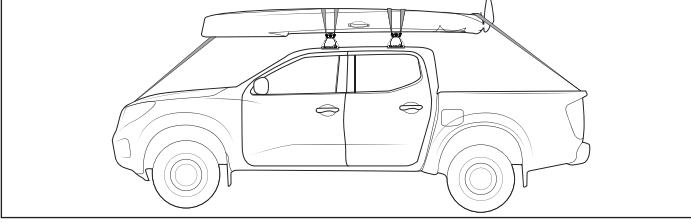
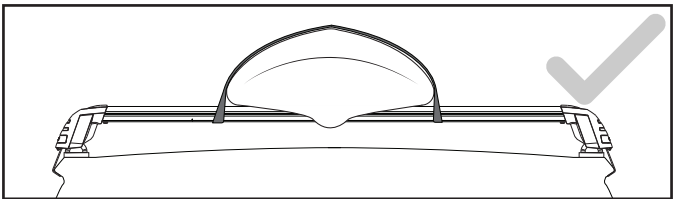
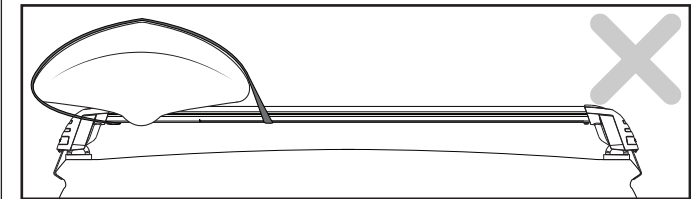
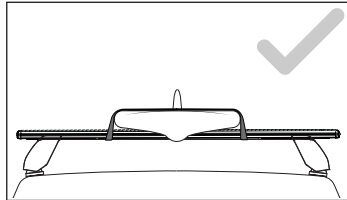
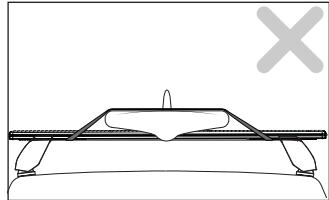
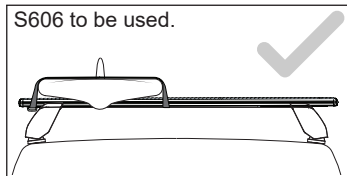
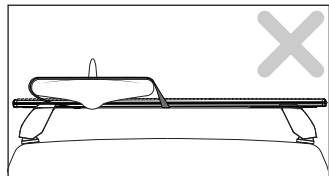
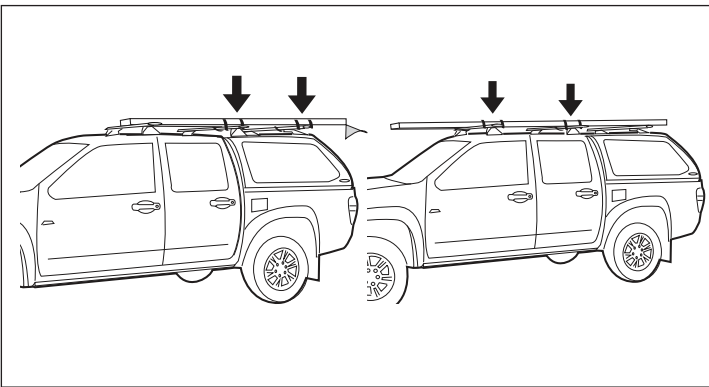
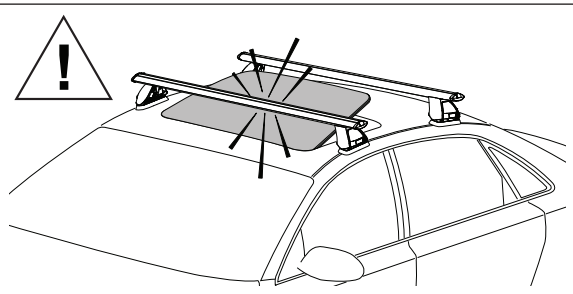
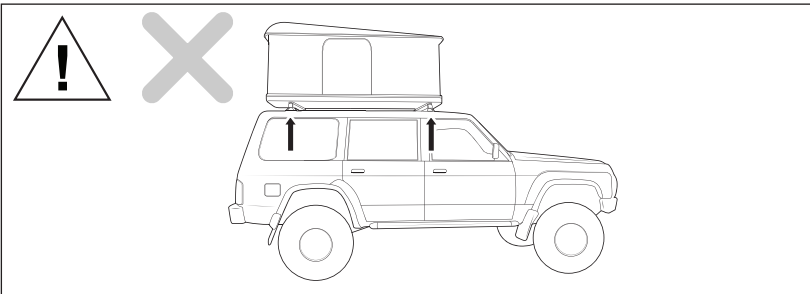
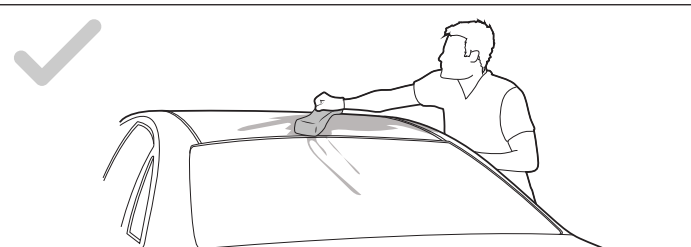
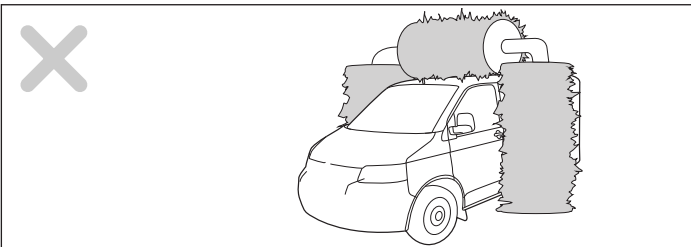
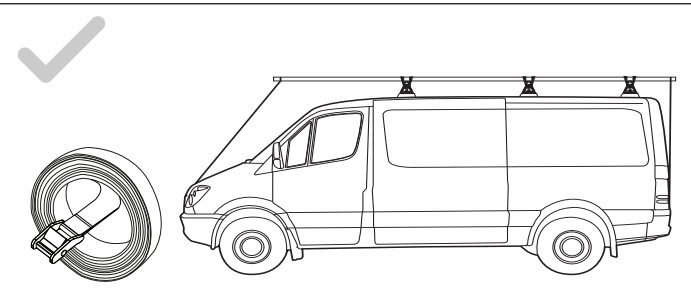
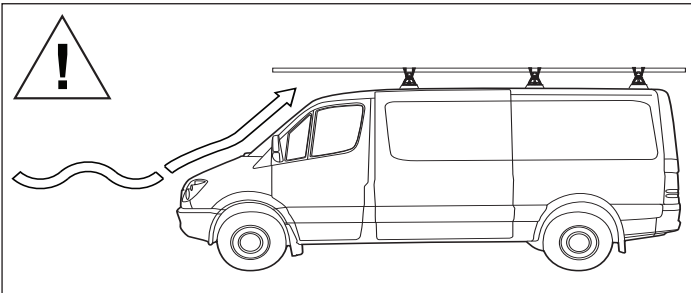
**Please remove crossbars when putting vehicle through an automatic car wash.**

**Please remove Batwing awning and crossbars when using an automatic carwash.**

**Note for Dealers and Fitters:**

It is your responsibility to ensure these fitting instructions are given to the end user or client

# Quick Mount Track Legs RLT600



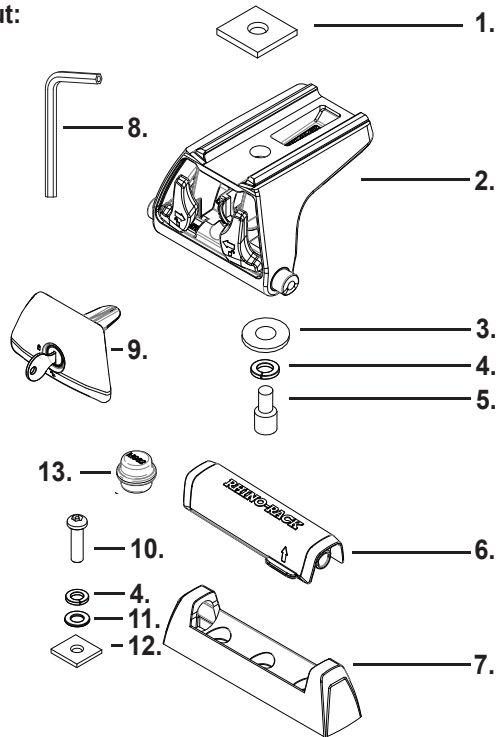
# Quick Mount Track Legs RLT600

## Parts List

Item	Component Name	Qty	Part No.
1	M6 24x24x4 Nut	4	N068
2	Track Leg Body	4	M703
3	M6x16x1.6 Flat Washer	4	W031
4	M6 Spring Washer	12	W004
5	M6x20 Socket HD	4	B054
6	Track Leg Base Cover	4	M702
7	Track Leg Base	4	M701
8	5mm Allen Key	1	H021
9	Track Leg Lockable Cover	4	M704
10	M6x16 Button Security Screw	8	B061
11	M6x12.5 Flat Washers	8	W003
12	M6 24x21x4 Nut	8	N057
13	Track Leg Grommet	4	M982
14	Instructions	1	R474

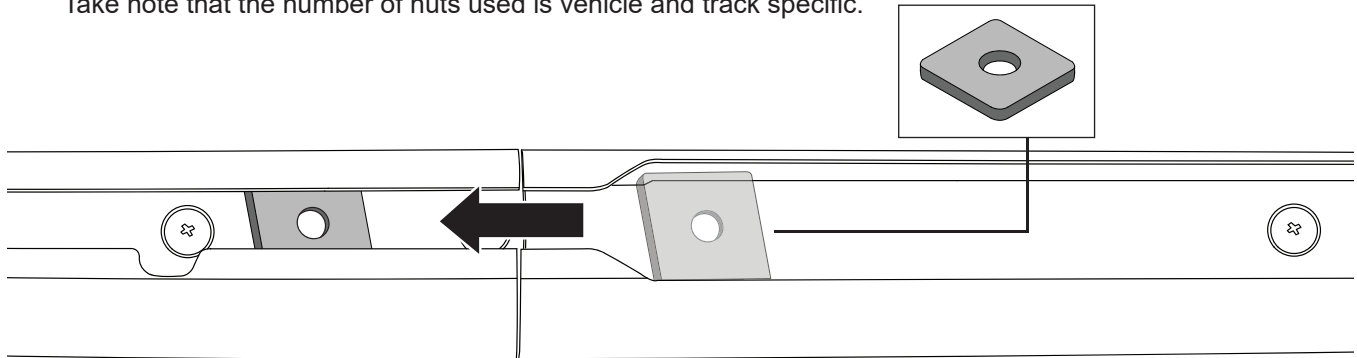
**Tools Required:** Allen Key (provided)  
Metal Key (provided)

Layout:

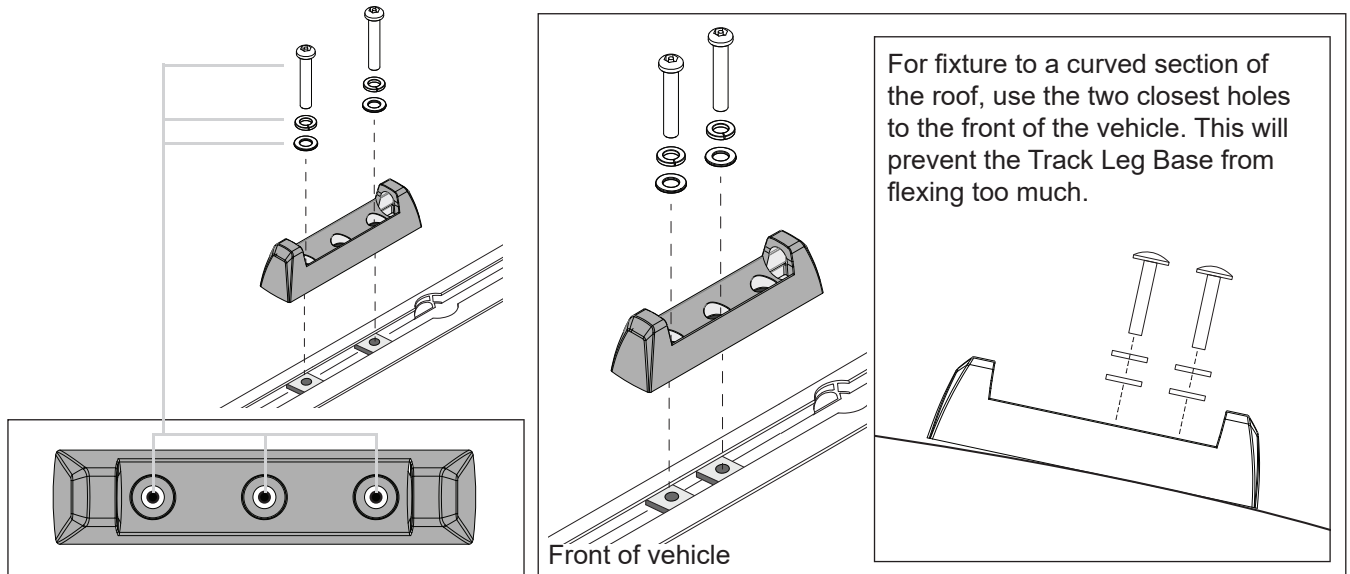


## Instructions

- Place M6 24x21 Hex Nut into the opening of each track at rear of vehicle. Slide along the track to position. Take note that the number of nuts used is vehicle and track specific.



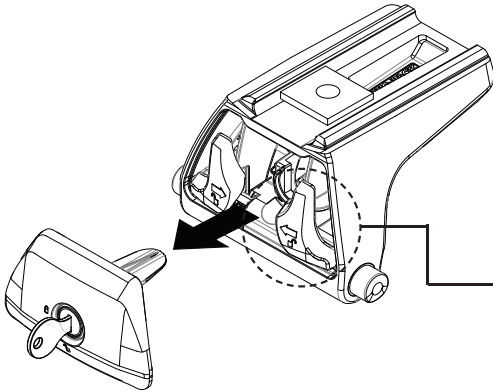
- Place the mounting plate onto the track. Fix in place with security screws, spring and flat washers. Note that the amount of fixing hardware used is dependant on the previous step and vehicle requirements.



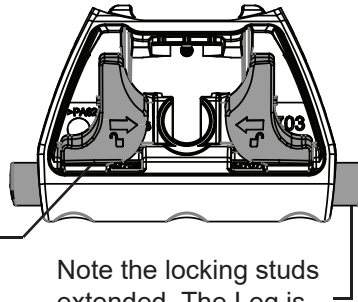
## Quick Mount Track Legs RLT600

- 3** Prepare the Leg for installation as follows: 1 - Remove cover plate. 2 - Locate and Pinch locking levers together. 3 - With levers pinched together, push them backward into a locked position within the leg cavity.

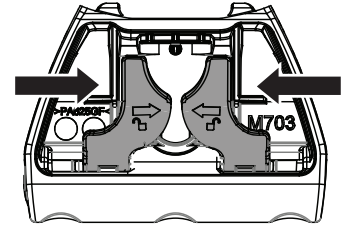
1.



2.



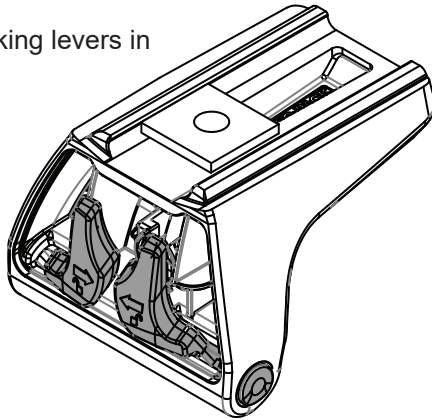
Note the locking studs extended. The Leg is now 'locked'.



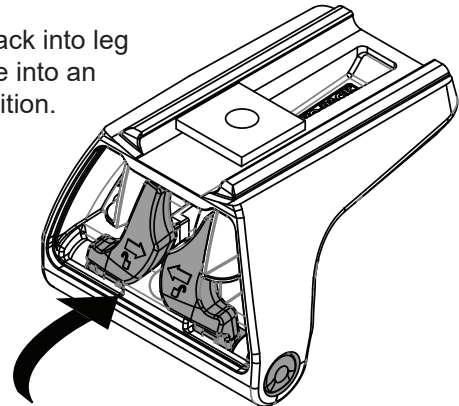
retracted 'unlocked'

3.

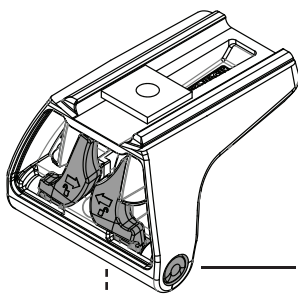
Keep locking levers in position.



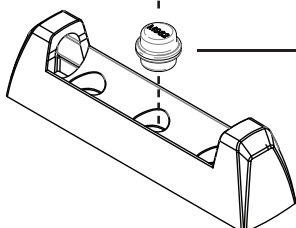
Push levers back into leg cavity to locate into an 'unlocked' position.



- 4** With the locking studs now in an 'unlocked' position, insert the leg into the mounting bracket.



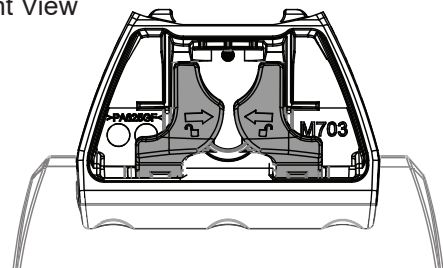
the locking studs are locked inward, this allows the leg to be placed in a mounting position.



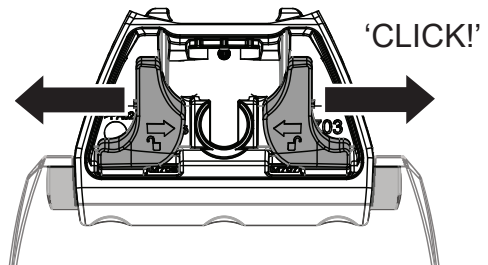
Push the track leg grommet into the centre hole of the bracket. This will remove any possible "rattle" on uneven roads.

Front View

1.



2.

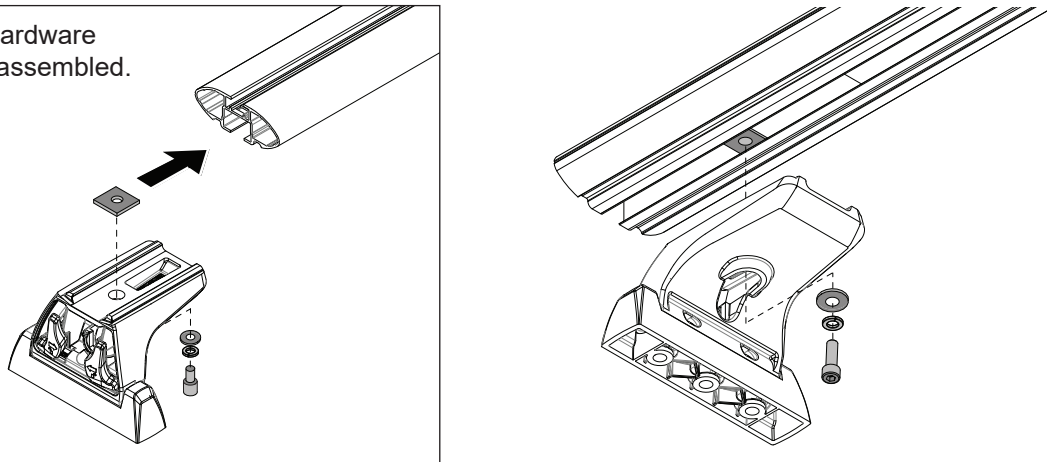


Pull the locking levers forward to their original position. They will spring back pushing the locking studs back outward, fixing the leg into the mount. Ensure both studs are secure in bracket. Apply small amounts of downward pressure if studs do not engage.

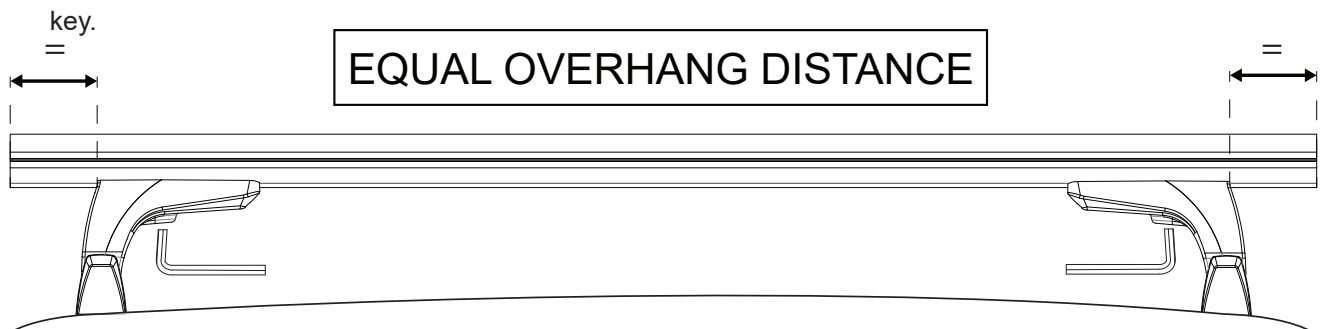
## Quick Mount Track Legs RLT600

- 5** Assemble the leg hardware as shown. Slide the leg into the bar and finger tighten. Repeat for all 4 legs.

Note: Leg hardware comes pre-assembled.



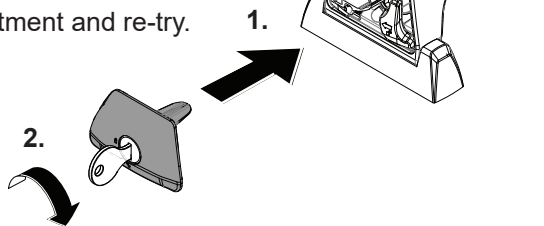
- 6** Check the cross bar over hang is equal on both sides, re-adjust if required. Tighten with a 5mm allen.



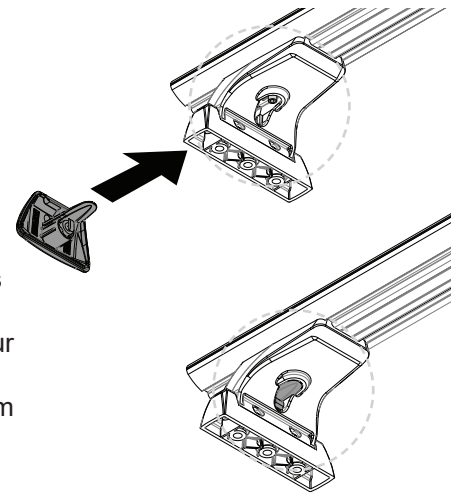
At this point the bar can be removed and the mounting base can be fully tightened if not done so in step 2.

- 7A** Insert the Face plate into the leg. Using the key provided, insert and turn clockwise to lock the unit. Remove the key.

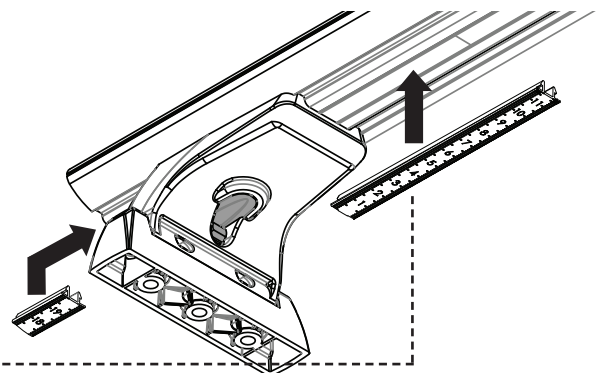
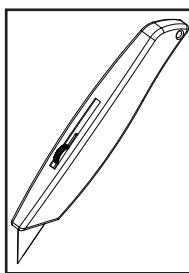
Insert the cover plate and then lock using the key provided in the kit. If it cannot be inserted properly it means one of the studs is not correctly fitted. Check fitment and re-try.



**Note:**  
The Face Plate will cover the hardware holding the legs in place. This will help to ensure your system is secure from theft.

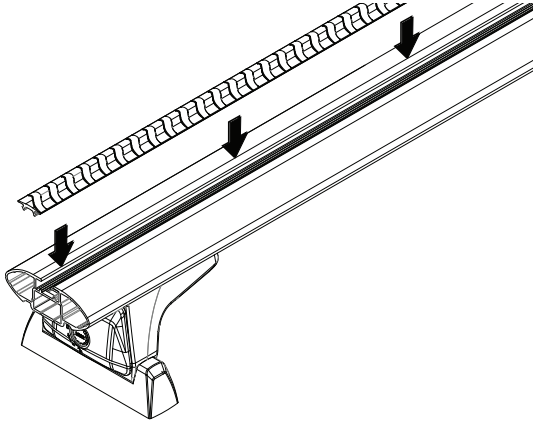


- 7B** Cut and fit the underbar strips and fit to your crossbars.

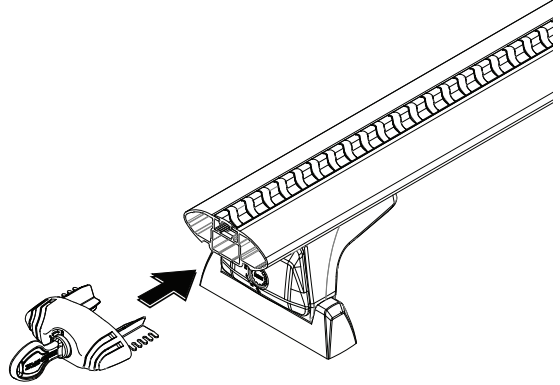


## Quick Mount Track Legs RLT600

- 8** Install the Vortex Rubber Strips. It may be easier to remove bar and complete assembly steps 8,9 and 10.

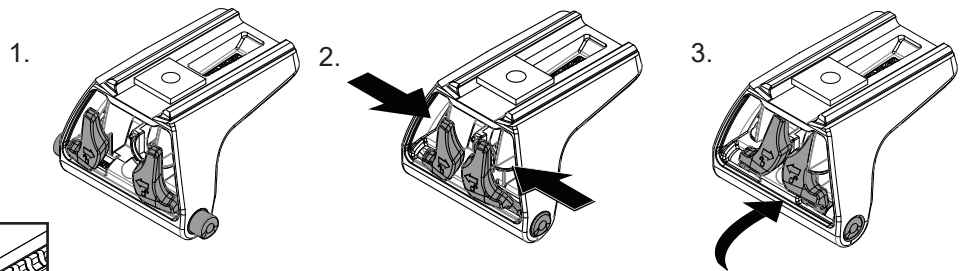


- 9** Insert the end cap. Using the key provided, lock the end cap. Remove the key. Note metal keys can be purchased so they match the RLT600 Leg.

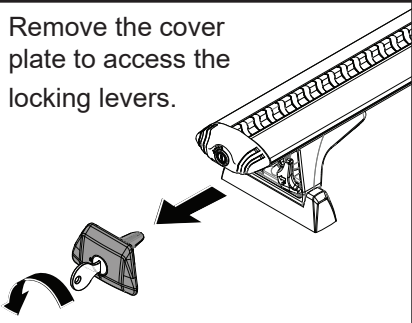


## Removing the Bars

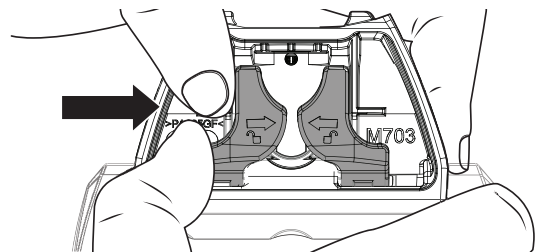
- 1** Remove the cover plate from the legs. Squeeze the locking levers together and push them backward into the leg cavity. Assistance may be required.



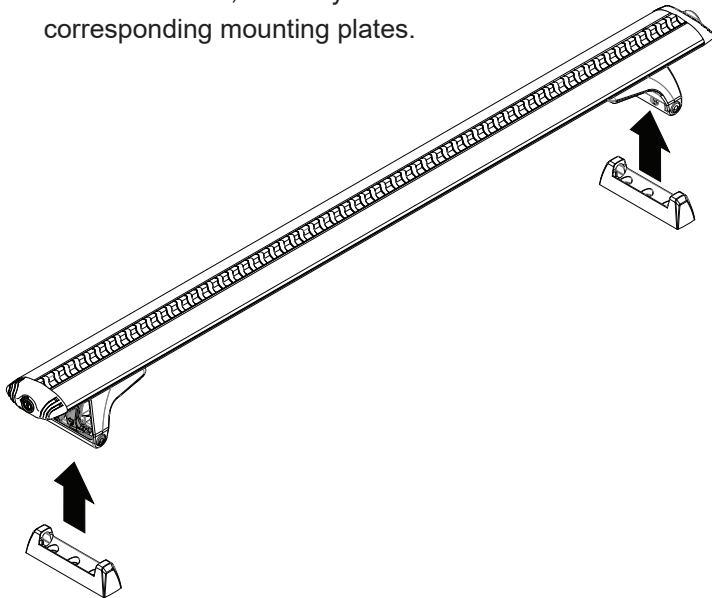
Remove the cover plate to access the locking levers.



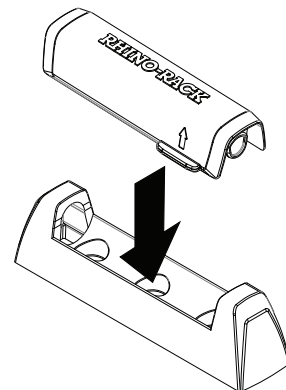
**Note:**  
Use two hands to push in the locking levers if tight. Do not use a screw driver as this may damage the levers.



- 2** With assistance, carefully lift the bars out of the corresponding mounting plates.



Attach Leg Base Cover when not in use.





# RHINO-RACK

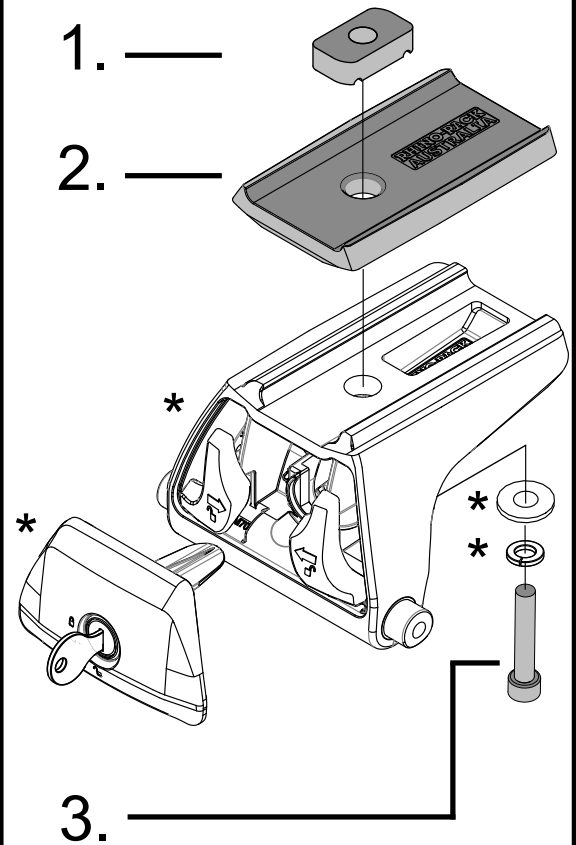
## QMHD05

Item	Component Name	Qty	Part No.
1	M6 Channel Nut	2	N002
2	Quick Mount Leg HD Bar Spacer	2	M709
3	M6x30 Socket HD Cap Screw	2	B047
4	Instructions	1	R569

**\*Note:**

RLT600 Parts as separate.  
Fix the Quick Mount Spacer to the Leg using the hardware in the leg kit. The bolts found in the spacer kit will replace the original in the leg kit.

**Tools Required:**  
5mm Allen Key



Note: Max Spacer height  
30mm

Issue: 03

Document No: R569

Prepared: Kayle Everett

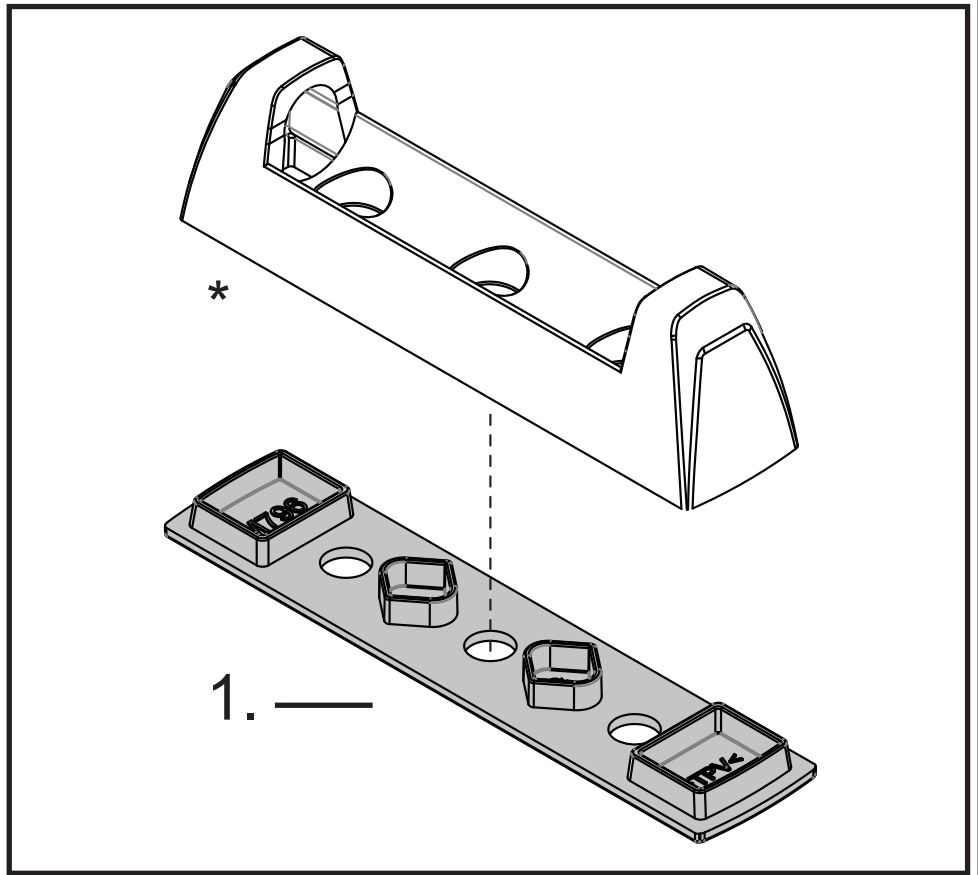


# RHINO-RACK

QMFK06

**\*Note:**

RLT600 Parts as separate.  
Fix the Quick Mount Rubber Flat Base into the Quick Mount Leg base as shown.



Item	Component Name	Qty	Part No.
1	Quick Mount Rubber Flat Base	4	M796
2	Instructions	1	R770

Issue: 01

Document No: R770

Prepared: Kayle Everett