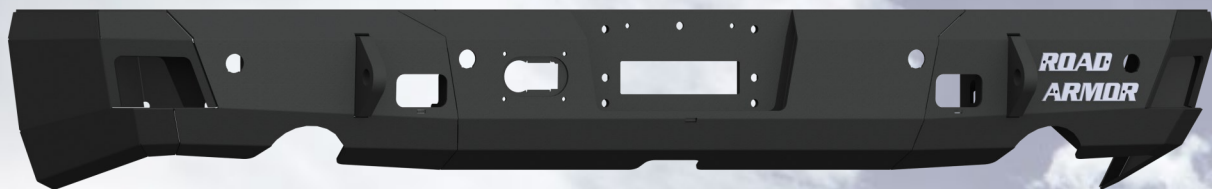


**412 / 409R (classic)**



**4162R / 413R**



**4192R / 4191R 2019+**



## INSTALL INSTRUCTIONS

**Ram 1500 / 2500 / 3500 Rear Stealth Bumper**

**Product : 412, 4162R & 4192R**

**409R, 413R & 4191R**

**Application : 2009+ RAM 2500 / 3500**

**2010+ RAM 1500**

## I WARNING

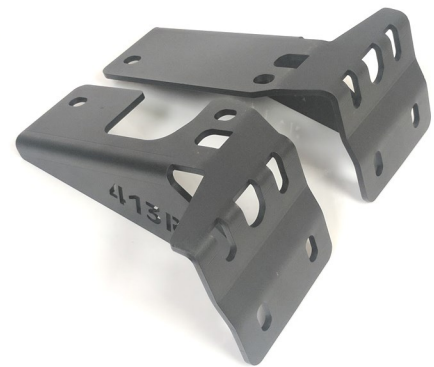
Read the instructions completely before beginning installation. Before tightening bolts, drilling or cutting where required, check to make sure there are no obstructions such as brake, fuel or electrical lines which may be damaged. Also keep in mind this is an after-market product and MAY require minor shimming and/or trimming, reaming, etc. for proper fit. Road Armor is not responsible for any damages to vehicle.

## ⓘ IMPORTANT NOTICE

- Be sure to inspect and test fit your product to ensure proper fitment before having it coated, painted, bed lined, etc.
- Road Armor will not be responsible for the cost of coating your unit if any problems with fit or finish are not noted and addressed beforehand.

## SAFETY FIRST!

- FOLLOW ALL INSTRUCTIONS, YOUR SAFETY AND THE SAFETY OF OTHERS IS MOST IMPORTANT.
- WEAR APPROPRIATE EYE PROTECTION AND EXERCISE CAUTION WHEN DRILLING / CUTTING



## INCLUDED HARDWARE

- 8 1/2"-13 x 1-1/2" Grade 8 Cap Screw
- 8 1/2" x 1.375" General Purpose Flat Washer
- 8 1/2" Split Lock Washer
- 2 1/4" K-lock nut
- 4 1/4" x 0.625 Flat Washer
- 2 1/4"-20 x 3/4" Hex Bolt
- 4 8-32 x 3/4" Grade 8 flat socket cap screw
- 4 8-32 Lock Nut
- 2 License plate light
- 4 1.5" single bolt tab
- 8 1/2"-13 grade 8 hex nut
- 4 2" single bolt tab
- 4 1 1/8" Dome Plug (6 - for 2019+)
- 4 3/4" rubber grommet (6 - for 2019+)
- 2 1/2" Bolt retainer

**\*NOTE\*** When removing all sensors and reinstall them into Stealth bumper as were in factory bumper. Trim 1/16" off sensor housing for proper fit. Zip tie can be used on back side to secure each sensor assembly to bumper.

**Please be sure that sensor are not in bumper cutout to tightly, may cause sensor not to function properly.**

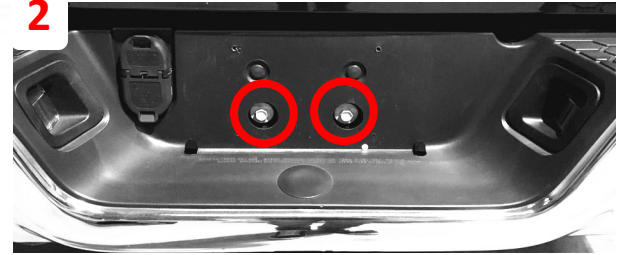
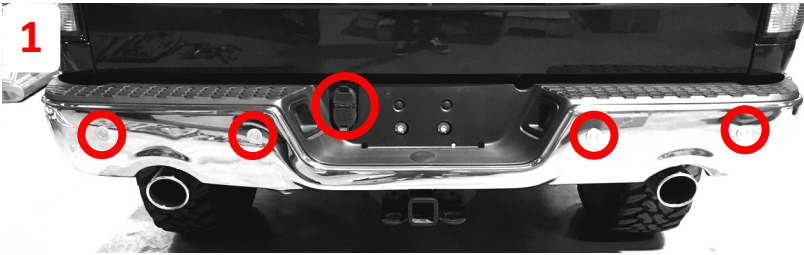


1

Unplug the trailer connector, license plate lights, and the back up sensors if equipped

2

Remove license plate and the two bolts from the center of the bumper



3

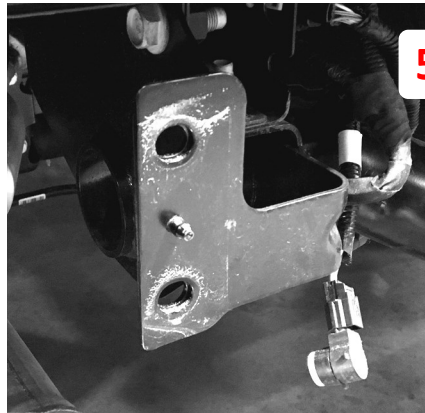
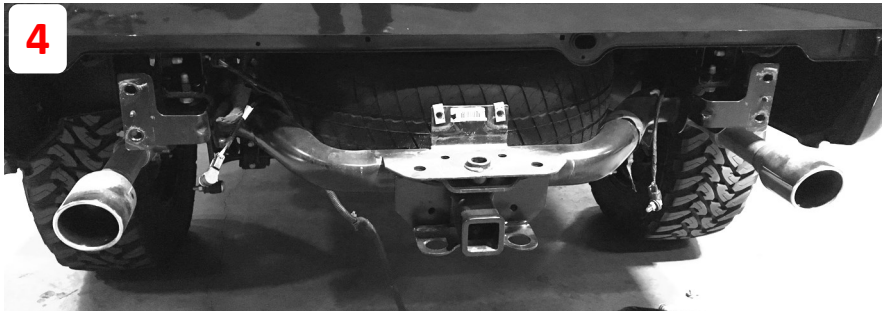
Remove two bolts on the backside of each bumper corner.

4

Remove OEM bumper.

5

Grind down the alignment pin on the frame bracket



6

Install parking sensors, trailer hookup, and supplied license plate lights into bumper.

**\*\*2019+ models reuse factory license plate light housings\*\***

7

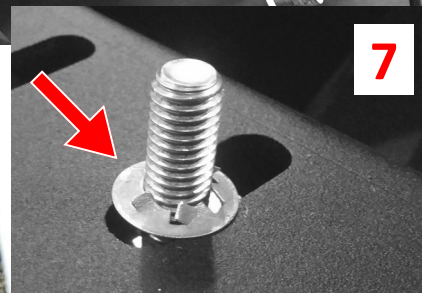
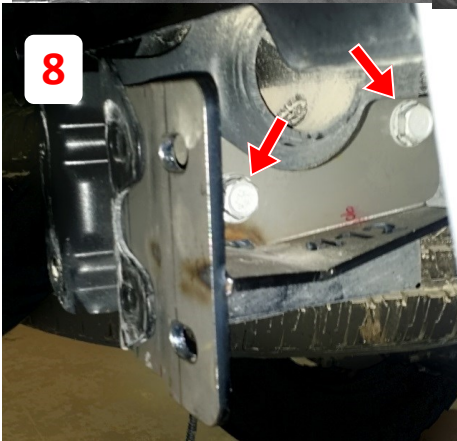
Install 8 - bolt tabs through bumper using the included keeper washers. Use a 3/4" deep socket to push the washers over the threads.

8

Install the bumper mounting bracket onto the frame using the OEM hitch hardware.

9

Install rear bumper onto truck using supplied 1/2" hardware.



**Note** If truck is air pump equipped; removed & remounted on the to new bracket.



**Finished**