



# **INSTALL INSTRUCTIONS**

**Rear Spartan Bumper**

**Jeep Gladiator JT Rear Bumper**

**Product : 5203XR0B**

**Application : 2019+ Jeep Gladiator JT**

## I WARNING

Read the instructions completely before beginning installation. Before tightening bolts, drilling or cutting where required, check to make sure there are no obstructions such as brake, fuel or electrical lines which may be damaged. Also keep in mind this is an after-market product and MAY require minor shimming and/or trimming, reaming, etc. for proper fit. Road Armor is not responsible for any damages to vehicle.

## ⓘ IMPORTANT NOTICE

- Be sure to inspect and test fit your product to ensure proper fitment before having it coated, painted, bed lined, etc.
- Road Armor will not be responsible for the cost of coating your unit if any problems with fit or finish are not

## SAFETY FIRST!

- FOLLOW ALL INSTRUCTIONS, YOUR SAFETY AND THE SAFETY OF OTHERS IS MOST IMPORTANT.
- WEAR APPROPRIATE EYE PROTECTION AND EXERCISE CAUTION WHEN DRILLING / CUTTING

## REQUIRED TOOLS

Metric and SAE Socket Sets and Wrenches

Flat Head Screw Driver

Pick Tool

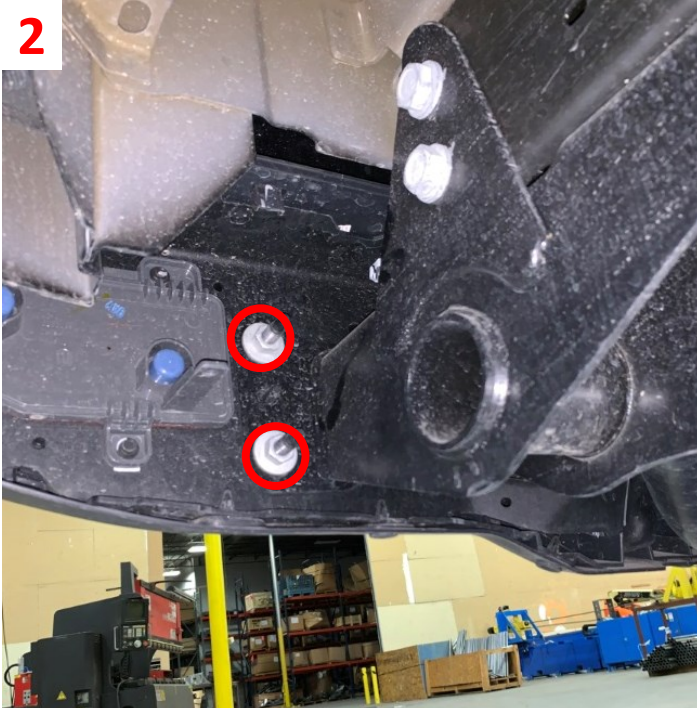
## INCLUDED HARDWARE

- 4 1.5" Bolt Tab
- 4 1/2" Flat Washer
- 4 1/2" Split Lock Washer
- 4 1/2"-13 Grade 8 Hex Nut
- 4 1/4"-20 X 3/4" Stainless Button Head Bolt
- 4 1/4"-20 K-Lock Nut
- 4 1 1/16 Dome Plug
- 4 1/2" Push Nut Retainer
- 4 1/4" License Plate Nylon Nuts
- 4 M6x16mm Phillips Head License Plate Screws
- 4 #8-32 x 3/4" Socket Cap Bolt
- 4 #8-32 K-Lock Nut

- 1 Disconnect the wiring harness from the rear bumper to the JT Jeep.
- 2 Remove 2 bolts per side securing the bumper to the frame. (16mm socket)
- 3 Remove the 2 bolts behind the license plate. (16mm socket)
- 4 Remove the bumper by pulling straight back.
- 5 Leave tow hooks in place if you wish to use them with the Spartan bumper. For single tow hooks or tow hook delete install the block off plate to the bumper where the tow hooks will not be present.

**Note: Install the block off plates inside the pocket area to not affect the fitment between the frame and bumper.**

2



3



4



5



- 6** **If equipped:** Install all sensors and harness. **\*\*Original sensor location\*\***  
If sensors are not an option install dome plugs into sensor holes.
- 7** Install the trailer light receiver plug.  
**Note: You will need to use a flat head screwdriver to slightly pry out the tabs on the back until they catch the bumper.**
- 8** Install the Road Armor supplied license plate lights and wire into existing wiring harness. (#8-32 hardware)
- 9** Install 1/2" bolt tabs into bumper and secure with push nut retainers. Also install 1/4" button head bolts .



- 10** Install aftermarket lighting. (3" cubes)
- 11** Install bumper by sliding bumper over tow hooks and onto the truck's frame. Secure with 1/2" hardware.
- 12** Plug in wiring harness and secure any loose wiring.
- 13** Install license plate plastic square nuts into bumper and install license plate.

# Finished

