

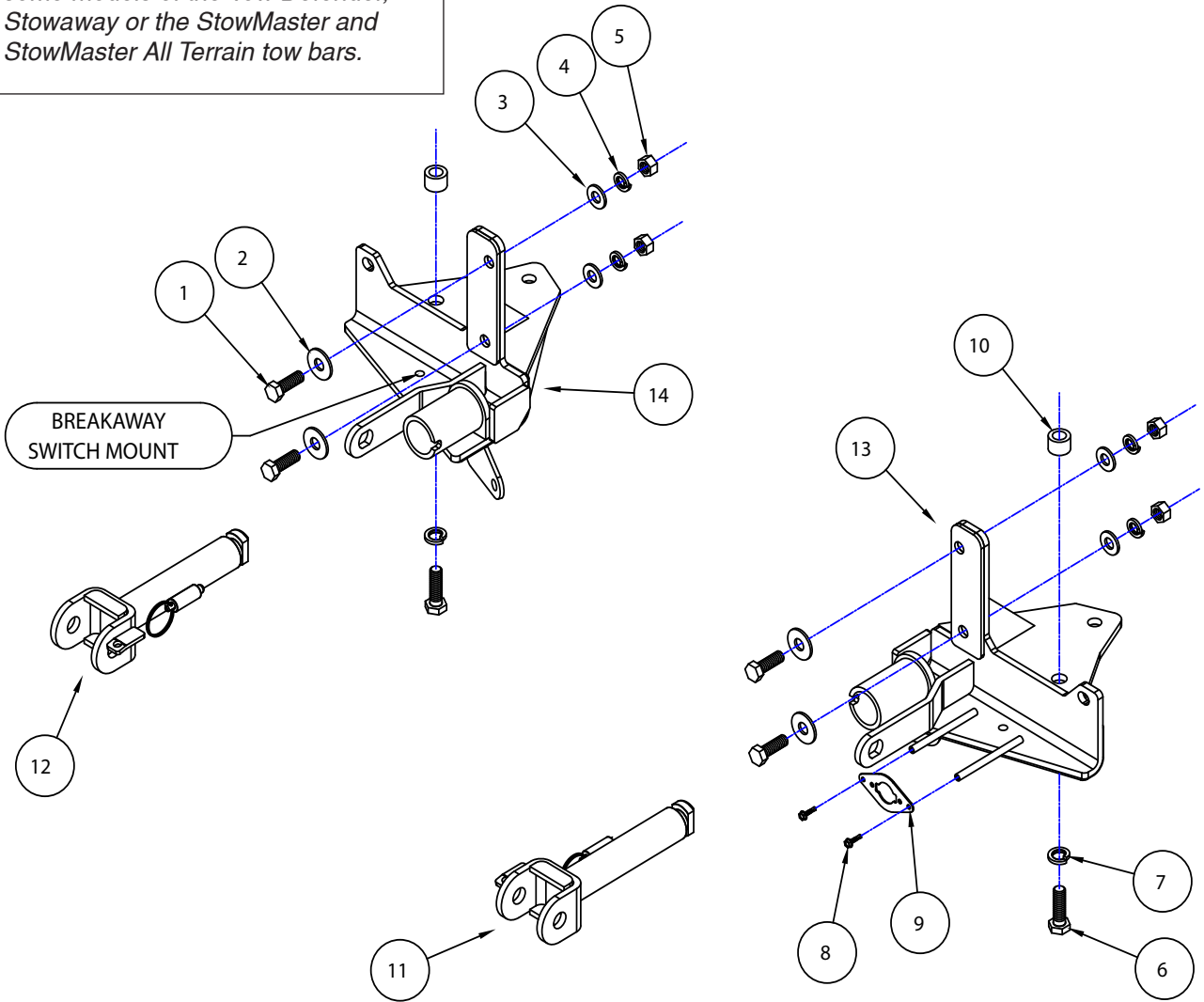


BASEPLATE KIT INSTALLATION INSTRUCTIONS

KIT# 522203-5

Important
 Note: this bracket will not accommodate the Guardian rock shield, some models of the Tow Defender, Stowaway or the StowMaster and StowMaster All Terrain tow bars.

Special Tools Needed
 Die Grinder or Reciprocating Saw



ITEM	QTY	NAME	PART #
1.....	4.....	1/2" x 1 1/2" BOLT	350095-00
2.....	4.....	1/2" FLAT WASHER	350308-00
3.....	4.....	1/2" FLAT WASHER SAE	350308-20
4.....	4.....	1/2" LOCK WASHER	350309-00
5.....	4.....	1/2" NUT	350258-00
6.....	2.....	14mm x 2.0 x 45mm BOLT	355899-00
7.....	2.....	14mm LOCK WASHER	355740-00
8.....	2.....	#10 x 3/4" SELF DRILLING SCREW.....	350247-35
9.....	1.....	WIRE PLUG MOUNTING PLATE.....	A003801
10.....	2.....	1" O.D. x 11/16" TUBE SPACER	A004551
11.....	1.....	DRIVER SIDE ARM.....	C002384
12.....	1.....	PASSENGER SIDE ARM	C002383
13.....	1.....	DRIVER SIDE RECEIVER	C003349
14.....	1.....	PASSENGER SIDE RECEIVER.....	C003350



BASEPLATE KIT INSTALLATION INSTRUCTIONS

KIT# 522203-5

This is one of our direct-connect baseplate kits, which allows the visible front portion of the bracket to be easily removed from the front of the vehicle (Fig.A and Fig.B). The kit consists of the two main receiver braces, two removable front braces, and a hardware pack. The main receiver braces mount to the frame rails, and the removable front braces install in the main receiver brace.

Before starting the installation, lay out the kit components in order, as they will be used. This will give you a visual idea of how the components work, and will also confirm that everything is present and accounted for.



Fig.A



Fig.B

IMPORTANT: All baseplates **must** be assembled with all the bolts left loose for final adjustment and positioning (before tightening) unless otherwise instructed. All bolts **must** be torqued for proper strength. If more than one bolt is used per fastening point, the diagram may only show one.

- Use flat washers over all slotted holes
- Use lock washers on all fasteners

WARNING

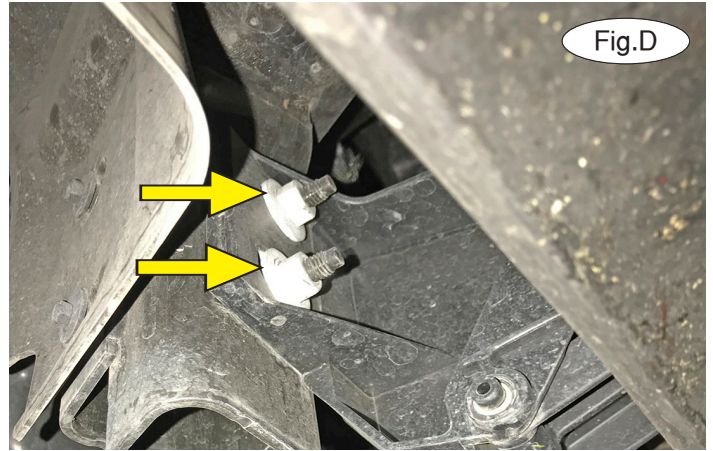
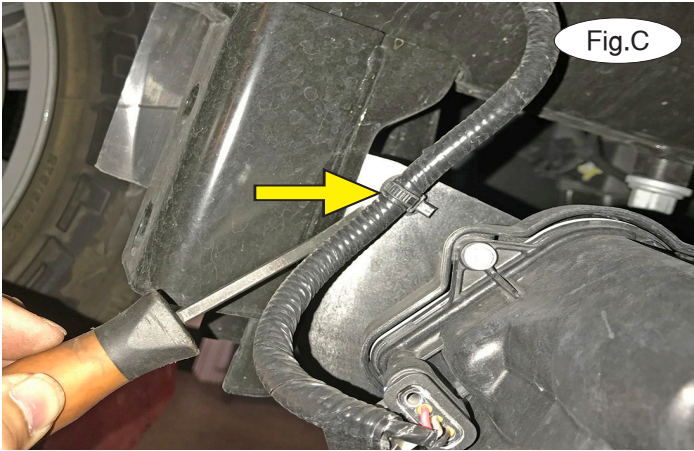
Failure to follow these instructions can result in property damage, personal injury or even death.

- Installation of most baseplates requires moderate mechanical aptitude and skills. We strongly recommend professional installation by an experienced installer.
- The installer must read the instructions and use all bolts and parts supplied. Failure to do so could result in loss of the towed vehicle.
- Use Loctite® Red on all bolts used for mounting this bracket.
- Every 3,000 miles, the owner must inspect the fasteners for proper torque, according to the bolt torque requirements chart on the last page of these instructions. The owner must also inspect all mounting points for cracks or other signs of fatigue every 3,000 miles. Failure to do so could result in loss of the towed vehicle.
- The owner must check the vehicle manufacturer's instructions for the proper procedure(s) to prepare the vehicle for towing. Some vehicles must be equipped with a transmission lube pump, an axle disconnect, driveline disconnect or free-wheeling hubs before they can be towed. Failure to properly equip the vehicle will cause severe damage to the transmission.
- If running changes were made by the vehicle manufacturer after this kit was designed, some bolts or other fasteners in the hardware pack may no longer be the correct size. It is the installer's responsibility to verify that the baseplate is securely fastened to the vehicle and fitted with the correct hardware to account for these changes. Failure to securely fasten the baseplate could result in loss of the towed vehicle.
- If the towed vehicle has been in an accident, it must be properly repaired before attaching the baseplate. Do not install the baseplate if any structural frame damage is found. Failure to repair the damage could result in the loss of the towed vehicle.
- Roadmaster manufactures many styles of baseplates. If your baseplate has removable arms, they must be removed before driving the vehicle, unless the arms can be pinned or padlocked in place. If not secured, the arms could vibrate out, resulting in non-warranty damage or personal injury.
- Some motorhome chassis have such a tight turning radius that you can damage your motorhome, towed vehicle, tow bar or baseplate while turning sharply. Before getting on the road, test your turning radius in an empty parking lot. Turning too sharply could result in non-warranty damage to towing system, motorhome and/or towed vehicle.
- Do not back up with the towed vehicle attached or non-warranty damage will occur to your towing system, motorhome and/or towed vehicle.
- The safety cables must connect the towing vehicle to the towed vehicle frame to frame, with the cables crossed, with enough slack for sharp turns. Refer to the cable instructions for proper routing. Failure to leave enough slack in the safety cables, or failure to connect the safety cables frame to frame, will result in the loss of the towed vehicle.
- This kit is designed for use with ROADMASTER tow bars and ROADMASTER adapters only. Using this kit with other brands, without an approved ROADMASTER adapter, may result in non-warranty damage or injury.
- Do not use this document for custom fabrication, as it may not show all parts or structural components. Custom fabrication, or any attempt to copy this baseplate design, could result in loss of the towed vehicle.
- Upon final installation, the installer must inspect the baseplate to ensure adequate clearance, particularly around hoses, air conditioner lines, radiators, etc., or non-warranty damage to the towed vehicle will result.
- This baseplate is only warranted for the original installation. Installing a used baseplate on another vehicle is not recommended and will void the warranty.

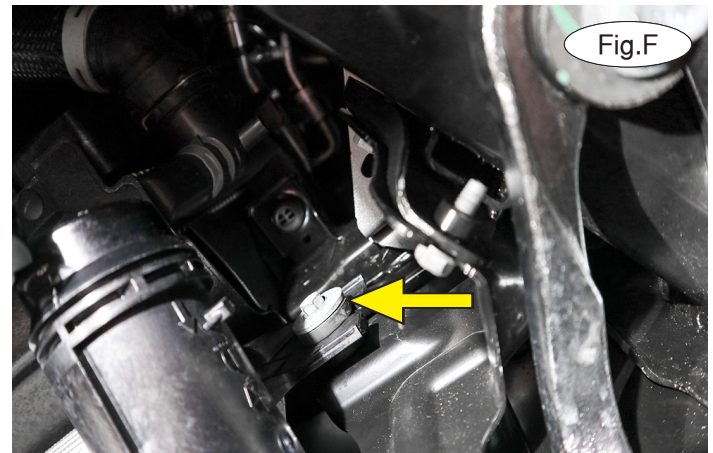
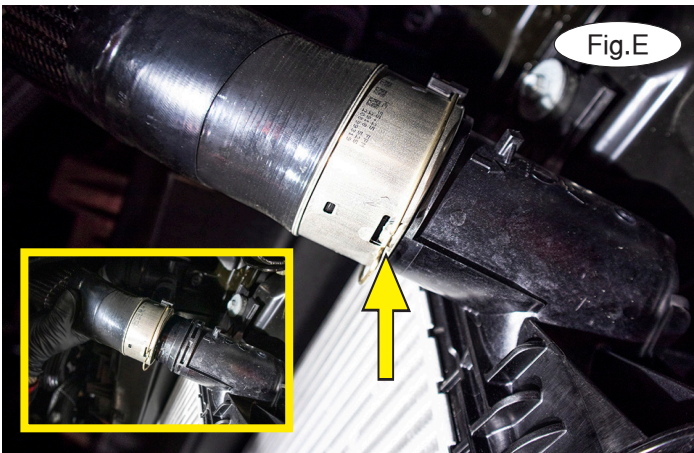


BASEPLATE KIT INSTALLATION INSTRUCTIONS

KIT# 522203-5

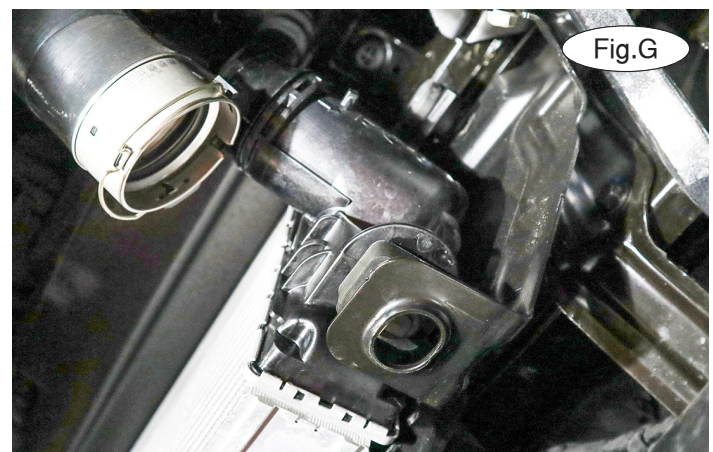


1. **Important:** please use all supplied bolts and parts and read all instructions carefully before beginning this installation. The majority of questions you may have can be answered within the text, and proper installation will ensure safe and secure travel. Now, begin the installation. **For vehicles without Active Air Dams:** skip to the next step. **For vehicles with Active Air Dams:** On the driver's side only, unclip the Active Air Dam's wiring harness (Fig.C) and unplug it. Then, on each side, remove two 13mm (head) nuts attaching the Active Air Dam to the frame (Fig.D). Pull out toward the front of the vehicle to remove it and set it aside for now.



2. **For vehicles with a gas engine:** Proceed to step 5. **For vehicles with a turbo diesel engine:** The intercooler will need to be temporarily removed. At each end of the intercooler, disconnect the air hose. Using a flathead screwdriver, pry up on the retaining ring (Fig.E – arrow) and pull the hose away from its connector (Fig.E – inset).

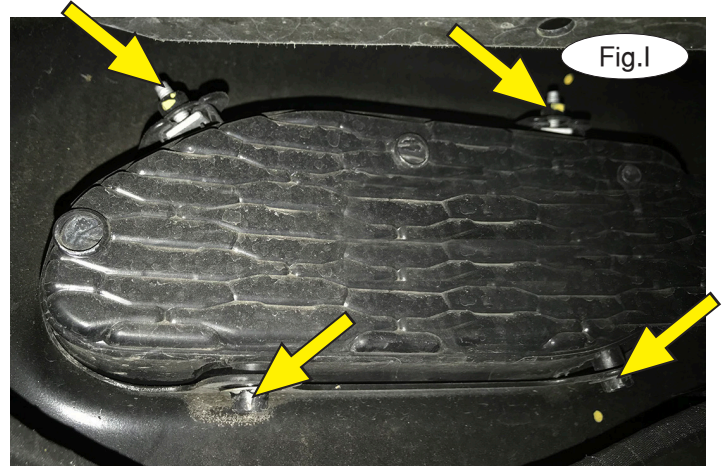
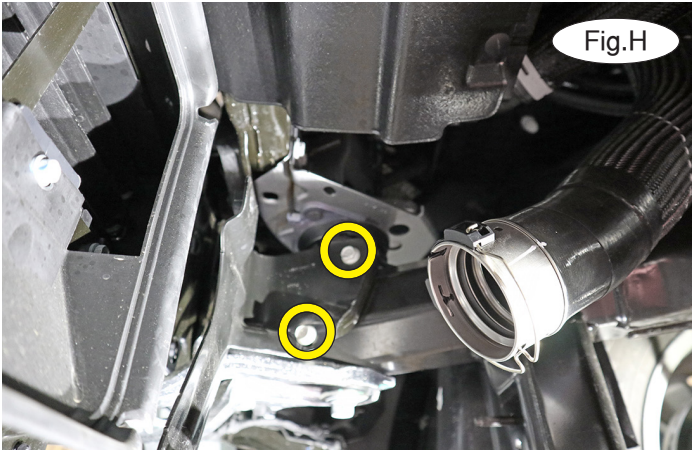
3. On each side, completely remove one 13mm (head) bolt attaching the intercooler to its mounts (Fig.F – passenger side). Gently lift up on the intercooler to release the rubber mounts on the bottom (Fig.G) and set it aside for now.



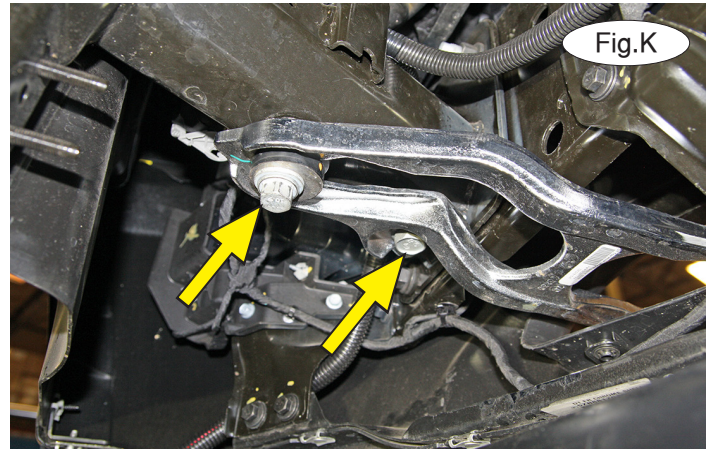


BASEPLATE KIT INSTALLATION INSTRUCTIONS

KIT# 522203-5



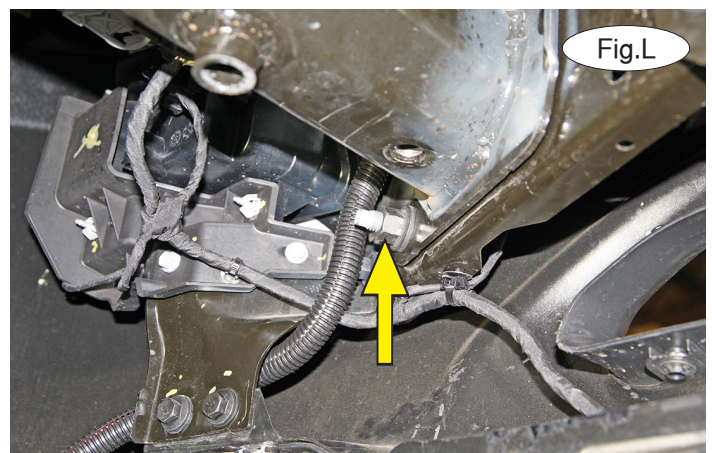
4. On each side, remove two 13mm head bolts attaching the intercooler mounts to the frame (Fig.H).



5. If the vehicle is not equipped with tow hooks:

Remove each plastic tow hook housing by removing two 8mm nuts on the top and releasing two locking rings on the bottom. Push the top out of each one toward the front of the vehicle to remove (Fig.I – arrows). You can either leave them off or trim them and replace them as shown in Figure J to allow clearance for the main receiver brace. Then, remove the 18mm (head) body mounting bolt. Now, proceed to step 6.

If the vehicle is equipped with tow hooks: Working on the driver's side only, remove an 18mm (head) bolt and a 13/16" (head) bolt attaching the tow hook to the frame (Fig.K). *Note:* it is necessary to pull firmly on the tow hook to remove the rear bolt from its attached star washer on the top side of the frame.

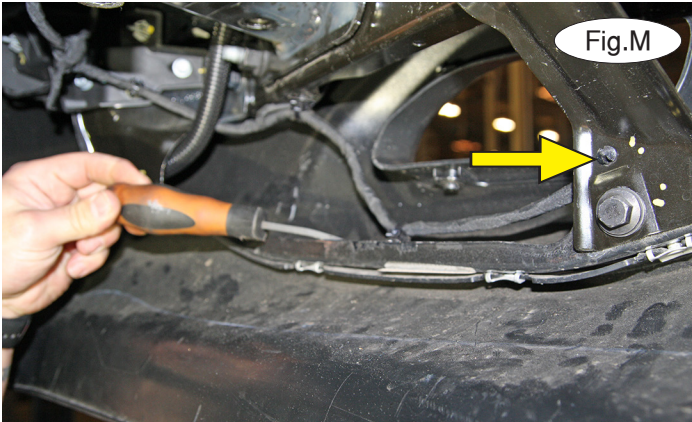


6. Remove an 18mm nut attaching the bumper to the frame (Fig.L).



BASEPLATE KIT INSTALLATION INSTRUCTIONS

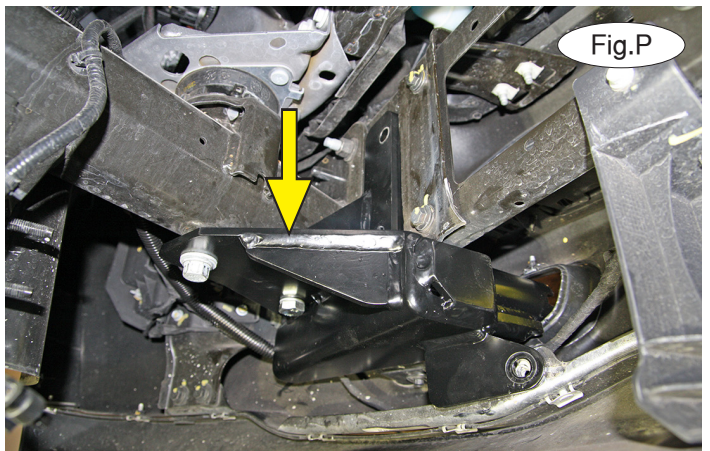
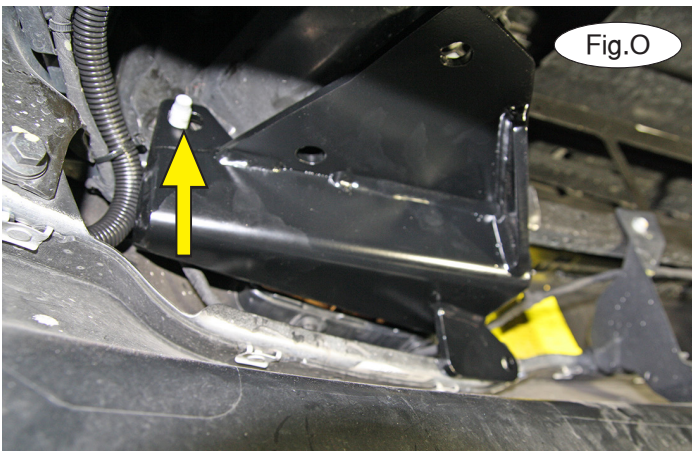
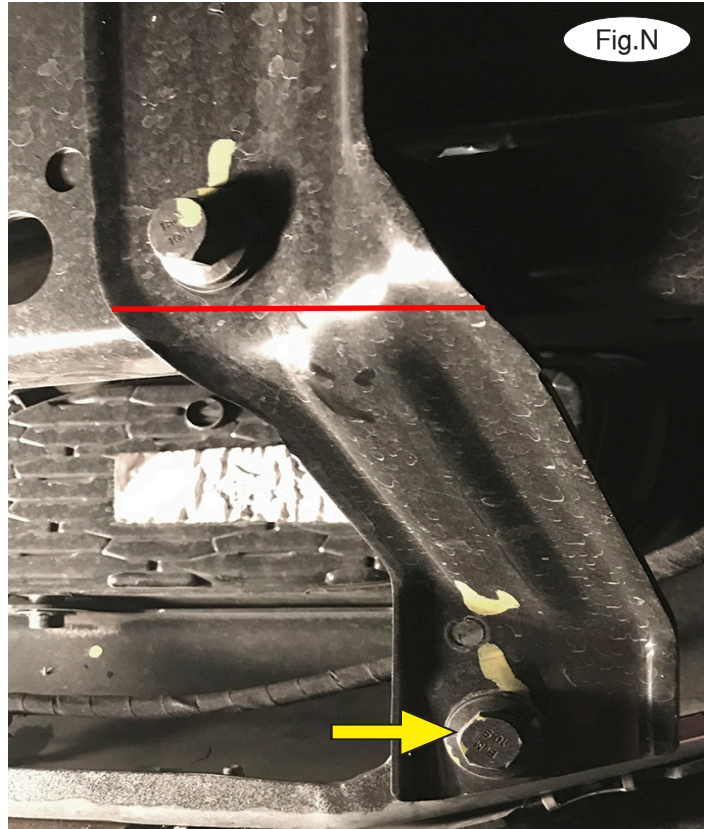
KIT# 522203-5



7. Release the two clips attaching the wiring harness to the bottom of the bumper (Fig.M). Then, push the harness toward the front of the vehicle to allow clearance for the main receiver brace.

8. Remove one 13mm (head) bolt (Fig.N – arrow) and then, using the red line in Figure H as a guide, trim off the bumper stiffener mount using a reciprocating saw or die grinder.

9. Now, use the drawing on page 1 to locate the driver's side-specific brace. Place it over the stud you exposed in step 6 (Fig.O) and loosely replace the 18mm (head) nut.

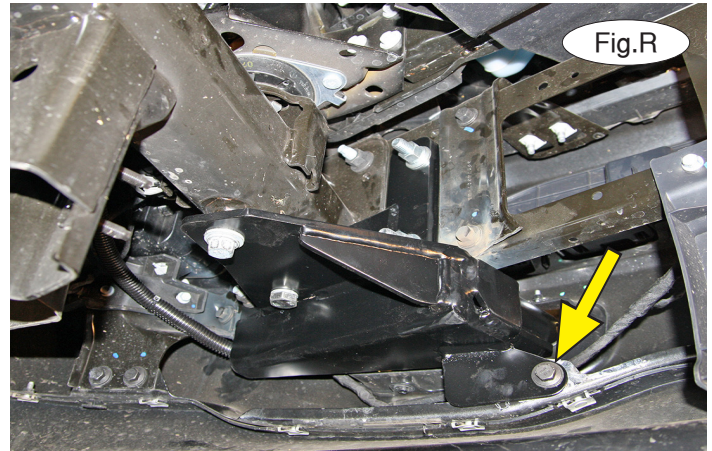
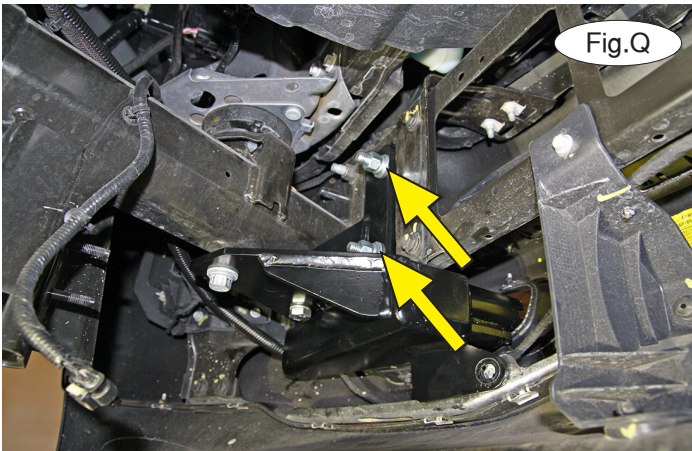


10. Still working on the driver's side only, slide the supplied 1" x .188 wall x 11/16" pipe spacer between the frame and the baseplate, over the forwardmost hole. The arrow in Figure P denotes the hole over which the pipe spacer should be placed. Then, use the supplied 14mm x 2.0 x 45mm bolt and bolt through the baseplate, pipe spacer and into the frame. Then, replace the 18mm (head) bolt you removed in step 1 (Fig.P).



BASEPLATE KIT INSTALLATION INSTRUCTIONS

KIT# 522203-5



11. On each of the two upper mounts, insert a supplied $\frac{1}{2}$ " x $1\frac{1}{2}$ " bolt and $\frac{1}{2}$ " flat washer, and finish with a small $\frac{1}{2}$ " flat washer, $\frac{1}{2}$ " lock washer and $\frac{1}{2}$ " nut (Fig.Q). *Note:* it is easiest to utilize the openings in the bumper framework to apply the finishing hardware. Then, replace the 13mm (head) bolt you removed in step 4 (Fig.R).

12. Repeat steps 5 through 11 for the passenger side of the vehicle. Then, replace the Active Air Dam and/or the inter-cooler by reversing steps 1 through 4, if the vehicle is so equipped.

13. Tighten the bolts to the bolt torque requirements, starting with the three forwardmost mounts. Then, finish torquing the remaining bolts. *Note:* use Loctite® Red on all nuts and bolts.

14. On each side, insert the removable baseplate arm into the front receiver 90 degrees from its final towing position, depressing the spring-loaded pin against the receiver. Now, twist back 90 degrees until the spring-loaded pin snaps into place in the notch on the receiver, locking the arm into place in its final towing position.

Please note: it is the owner's responsibility to ensure the locking of the pins before towing. Otherwise, failure of the towing system will result.

15. Install the tow bar to the mounting bracket according to the manufacturer's instructions.

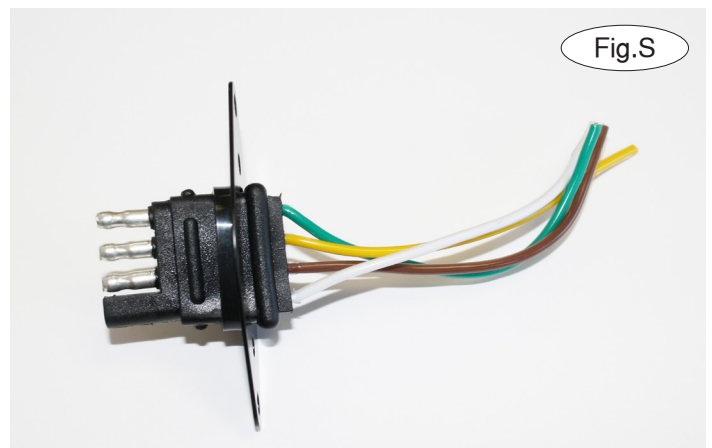
IMPORTANT!

Safety cables are required by law. When towing, connect safety cables to the safety cable tabs illustrated in the drawing on page 1. Make certain there is adequate slack in the cables to allow a full turning radius; otherwise, damage will result. If necessary, longer cables or cable extensions are available.

Three options for attaching the wiring plug to the main receiver brace

For four-wire round plugs: attach to the plug mounting plate and then use the two supplied $\frac{3}{4}$ " self-tapping screws to attach the mounting plate to the grille.

For four-wire flat plugs: place the plug through the mounting plug plate, and then secure it using the supplied zip tie on the front of the plug (Fig.S). Use the two supplied $\frac{3}{4}$ " self-tapping screws to attach the mounting plate to the grille on the front of the main receiver brace.





BASEPLATE KIT INSTALLATION INSTRUCTIONS

KIT# 522203-5



BOLT TORQUE REQUIREMENTS

Note: The torque values represented below are intended as general guidelines. Torque requirements for specific applications may vary. Roadmaster does not warrant this information to be accurate for all applications and disclaims all liability for any claims or damages which may result from its use.

STANDARD BOLTS

Thread Size	Grade	Torque
5/16-18	5	13 ft./lb.
3/8-16	5	23 ft./lb.
7/16-14	5	37 ft./lb.
1/2-13	5	57 ft./lb.
5/8-11	5	112 ft./lb.

METRIC BOLTS

Thread Size	Grade	Torque
6mm-1.0	8.8	6 ft./lb.
8mm-1.0	8.8	18 ft./lb.
8mm-1.25	8.8	16 ft./lb.
10mm-1.25	8.8	36 ft./lb.
10mm-1.5	8.8	31 ft./lb.

METRIC BOLTS

Thread Size	Grade	Torque
12mm-1.25	8.8	64 ft./lb.
12mm-1.5	8.8	60 ft./lb.
12mm-1.75	8.8	55 ft./lb.
14mm-2.0	8.8	88 ft./lb.

All illustrations and specifications contained herein are based on the latest information available at the time of publication approval. ROADMASTER, INC. reserves the right to make changes at any time without notice in material, specification and models or to discontinue models.