
2017-Up Tesla Model 3

Qi Center Console Direct Fit Bezel**PARTS INCLUDED**

1. (1) Direct Fit Bezel w/ (2) MQUSM
2. (1) Vehicle Specific T-harness
3. (2) MAGICPLATE™
4. (2) MAGICPLATE™ Applicator
5. (6) Double-sided Adhesive



READ INSTRUCTIONS COMPLETELY BEFORE INSTALLING THIS MOUNT KIT.

WARNING: Do not use the magnetic mount with any hard-drive based devices such as: iPod classic, iPod Video and Zune MP3 players. Use caution whenever removing or handling plastic parts of any vehicle. Unnecessary force or pressure can cause pieces to crack or break. Please use a plastic card to remove the metal plates. Remove adhesive residue with a non-abrasive cleaner.

CAUTION: This magnetic device is not a toy. The small magnets are harmful if swallowed. Keep away from children.

PRELIMINARY INTRODUCTION

Wirelessly charge your Qi-enabled smartphone without the need to plug your device into a car charger or USB cable. Quickly charge your device at 5W or 10W charging. The high powered neodymium magnets are 100% safe and will not damage your device. The TIQ01 works with Qi-enabled smartphones from these manufacturers: Apple, Samsung, Google, Microsoft, LG, HTC, Motorola. Also works with Qi-enabled cases, receivers, and battery covers.

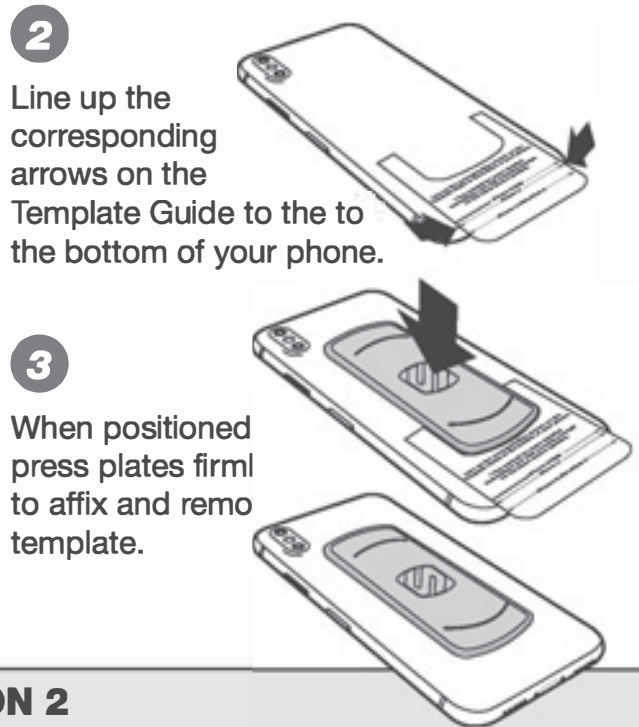
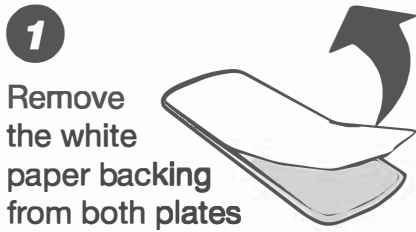
CAUTION: *Disconnect your vehicles negative battery terminal before the installation to help prevent electrical damage. We recommend the use of a volt/ ohm meter over a test light to check wiring. A test or grounded wire probe can cause damage to the vehicle's computer and/or diagnostic system. Avoid all factory airbag wiring - airbags can accidentally deploy causing serious injury or death.* **NOTE:** See your vehicle's instructions for any special tools your installation might require.

LIABILITY DISCLAIMER

This instruction booklet is based on carefully documented data and research of automobile disassembly, wire harness and information pertaining to the installation of this kit. Scosche Industries, Inc. cannot be held responsible for discrepancies/inconsistencies that may occur due to the automobile manufacturing changes or options, or damages that may occur in the automobile during the installation of components while using this booklet.

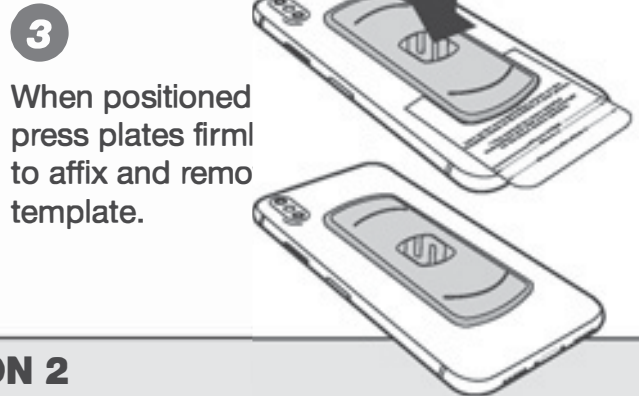
MAGICPLATE™ MOUNTING OPTION 1

NOTE: For mounting directly to device, use the large single plate with template guide as shown in the instructions below.



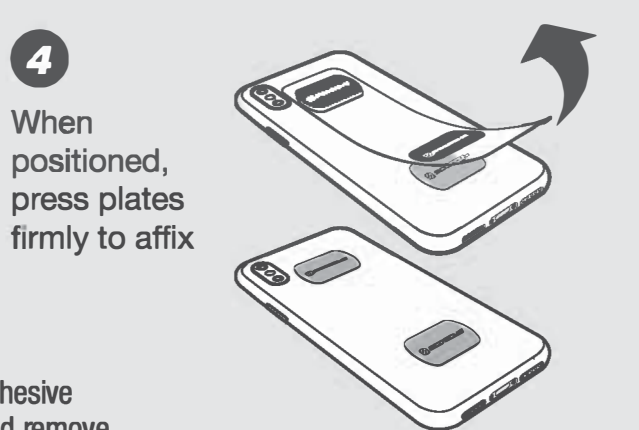
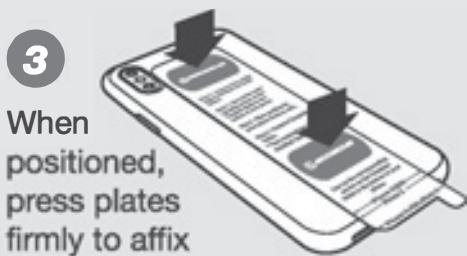
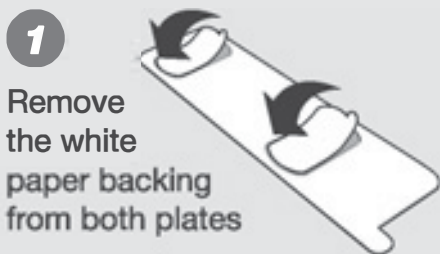
REMOVING THE PLATE

Use a thin plastic card to carefully lift the plate's adhesive surface from the mounting surface. Slowly lift up and remove the plate. **Do not use any heat or liquids to remove the plate, due to risk of damaging your phone.**



MAGICPLATE™ MOUNTING OPTION 2

NOTE: For mounting directly to CASE, use the (2) small plates with the integrated template guide as shown below.



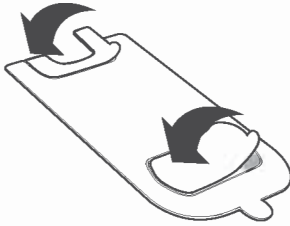
REMOVING THE PLATE

Use a thin plastic card to carefully lift the plate's adhesive surface from the mounting surface. Slowly lift up and remove the plate. **Do not use any heat or liquids to remove the plate, due to risk of damaging your phone.**

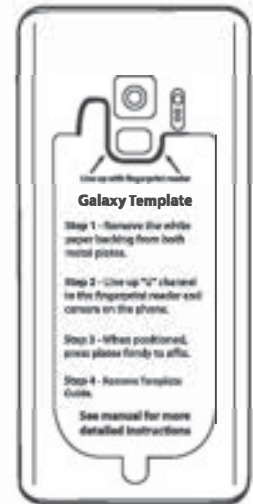
MAGICPLATE™ MOUNTING OPTION 3 (Continued)

NOTE: For mounting directly* to Galaxy S9/S9+, use the (2) small plates with the integrated template guide for Galaxy as shown. *For mounting directly to device only. Do not mount to case.

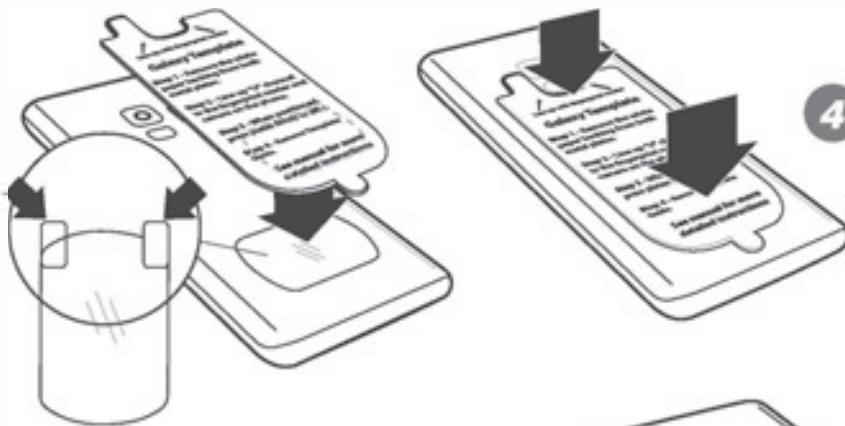
- 1** Remove the white paper backing from both plates



- 2** Line up “U” channel to the fingerprint reader and camera on the phone.

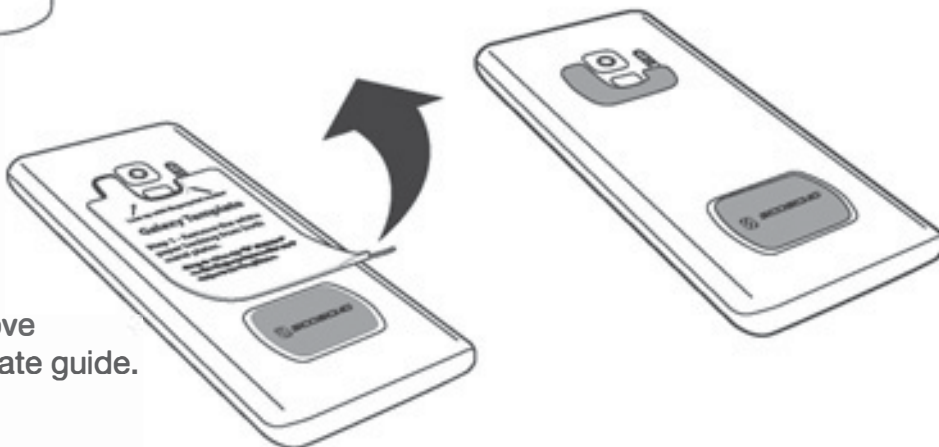


- 3** Remove the backing from the protective film as shown on the removal tabs (A), and place between the device and the lower plate (B). The protective film must be used when applying MAGICPLATE™ directly to the back of device.



- 4** When positioned, press plates firmly to affix.

- 5** Remove template guide.



REMOVING THE PLATE

Use a thin plastic card to carefully lift the plate's adhesive surface from the mounting surface. Slowly lift up and remove the plate.

Do not use any heat or liquids to remove the plate, due to risk of damaging your phone.

Modification Required: Please read complete instructions before proceeding. Location modification required for this installation, proceed with caution. If you are unsure or feel that the installation is too difficult, we recommend you seek professional installation. Note that additional installation fees may apply and vary by location. Scosche is not responsible or liable for any additional fees or modification done by the installer.

Caution! Before beginning the disassembly make sure of the following:

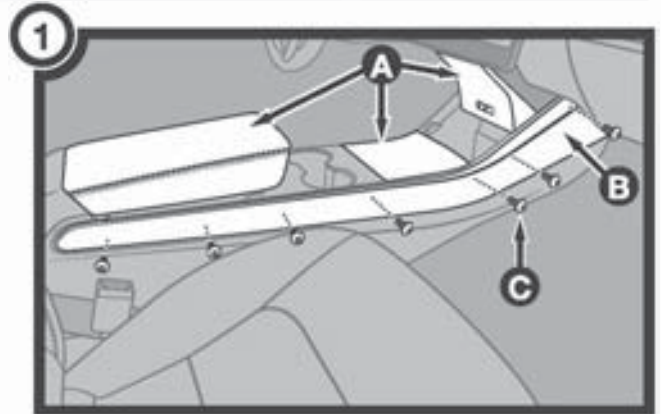
- Negative battery terminal is disconnected.
- Parking brake is **ON**.

Accessing 12V Power

VEHICLE DISASSEMBLY

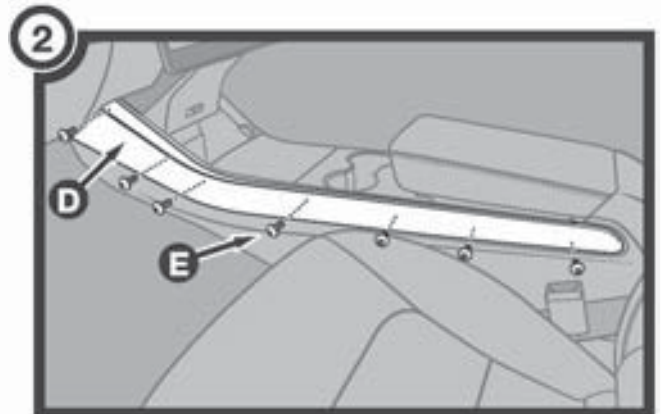
1. Follow the following steps listed below on front passenger side, see corresponding illustration 1 on right.

- A. Lift/Open all center console compartments.
- B. Using a panel removal tool, carefully remove the side-top trim panel from the center console on the passenger's side.
- C. Remove the (7) torx screws exposed from previous step, and remove the plastic trim.

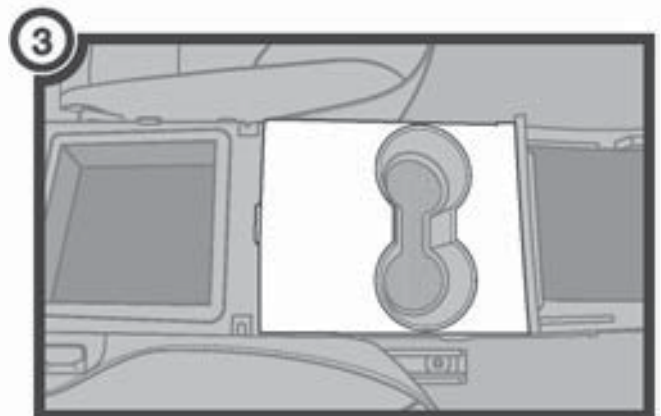


2. Keeping the compartments open from previous step, follow steps below on driver's side, see illustration 2 on the right.

- D. Using a panel removal tool, carefully remove the side-top trim panel from the center console on the driver's side.
- E. Remove the (7) torx screws exposed from previous step, and remove the plastic trim.

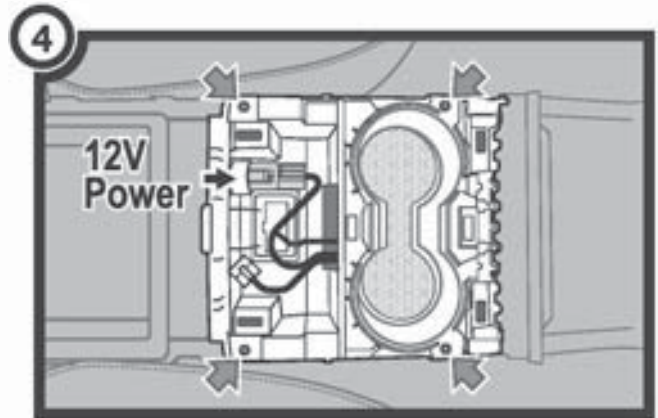


3. Carefully remove the cup-holder trim panel (Remove the trim panel ONLY, not the cup-holders).



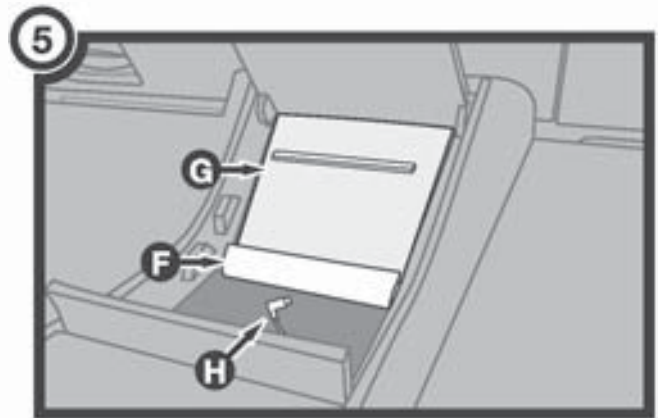
4. Remove the (4) screws securing the cup-holder panel, unplug all connections then remove the panel from location.

Note: The 12 volt power connection can be located here. This will be the source of power for the Qi module.

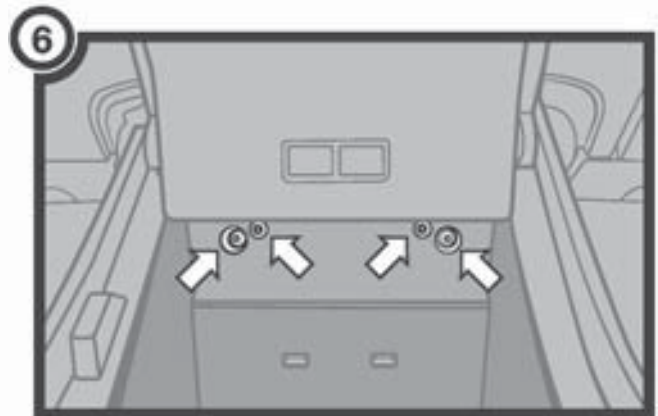


5. Remove the following in the order listed below F—H:

- F. Remove the bottom trim panel from the phone dock. To remove, slide towards the driver-side then pull the panel away from location. Remove rubber mat
- G. Slip and remove the existing
- H. phone charging cables away from the center console's phone placement panel.



6. Lift the phone dock then remove (4) torx screws located at the back of the panel, then carefully pull out the panel away from location (reference illustration 6 at right).¹



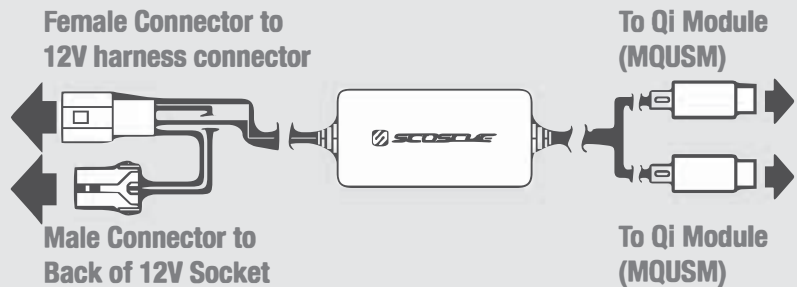
1. Removing the phone placement panel may require a bit of force when pulling the panel away.

TESTING QI MODULE (MQUSM)

TESTING CONNECTION

Before proceeding to the preparation/installation please test the modules functionality by connecting the provided vehicle specific t-harness (diagram below). Once the module is connected, place the Qi-enabled device on the module and refer to the LED Status chart below for specifics.

Note: The module can also be tested by connecting it to a USB to type-c connection power source (not included).



FOREIGN OBJECT DETECTION: Please follow the MAGICPLATE™ mounting instruction on pages 2 or 3 for best charging results. Note that blocking the charging coil with anything metallic object may cause the module to not work as designed.

BATTERY VOLTAGE REQUIREMENTS: The MQUSM (Qi Module) is designed to operate at voltages between 13.2-14.7. If your vehicle does not supply sufficient voltage with the ignition OFF, you may need turn the ignition to the ON position in order to operate the MQUSM.

LED CHARGING STATUS: The LED indicator on the side of the mount illuminates the charging status of the device. When powered ON, the indicator blinks in the following order: **BLUE, GREEN, BLUE.**

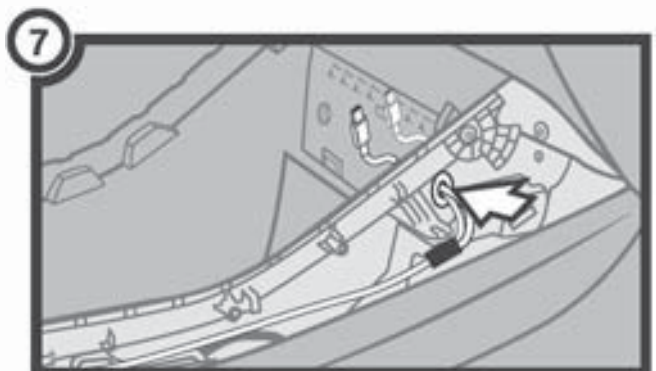
Standby = Green

Charging = Blue



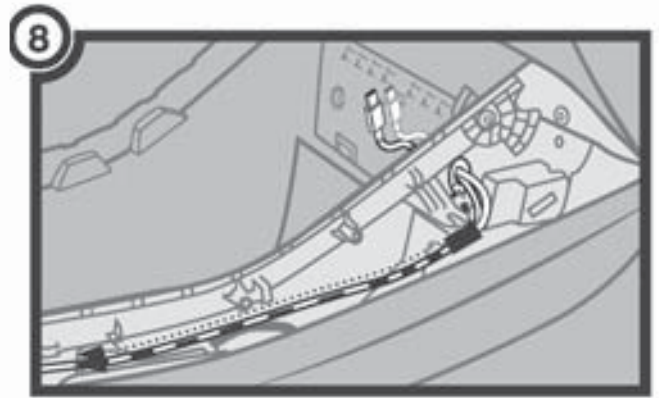
PREPARATION

7. Carefully drill a hole through the frame support near the top on the passenger's side. Note make the hole large enough to pass the type-c connection through. Reference the illustration on the right.



8. Run the remaining type-c connection along the support frame and the trim panel leading to the 12v socket exposed in step 4 of the disassembly.

Make all necessary vehicle connections as shown in the diagram above under **Testing Qi Module.**

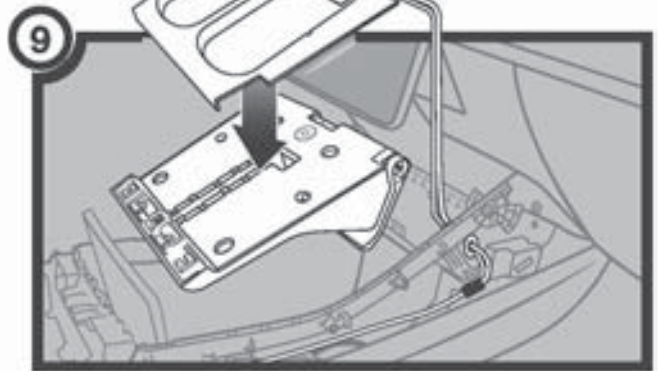


VEHICLE A **LY**

9. Route the type-c connector through the TIQ01 direct-fit bezel. Repeat this step for both Qi module slots on the bezel.

Notes:

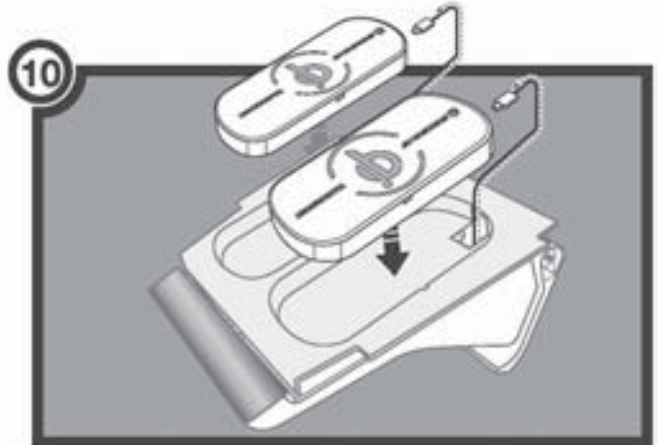
- Hide any excess wiring under the panels before reassembling.
- Use the provided two-sided adhesives to secure the panel/module from moving.



10. Connect the type-c connector to the MQUSM modules.

Notes:

- Hide any excess wiring under the panels before reassembling.
- Use the provided two-sided adhesives to secure the panel/module from moving.



11. Reassemble everything in reverse order to complete the installation, and place your Qi enabled device on to the newly installed platform.

