



2007 - 2018 GM 1500
Pick-Up & SUV 4WD
3.5" Suspension Lift
Installation Instructions

REQUIRED TOOL LIST:

- Safety Glasses
- Metric / Standard Wrenches & Sockets
- Grease Gun
- Floor Jack
- Jack Stands
- Measuring Tape
- Torque Wrench



Before beginning the installation, thoroughly & completely read these instructions & the enclosed driver’s WARNING NOTICE. Affix the WARNING decal in the passenger compartment in clear view of all occupants. Please refer to the Parts List to insure that all parts & hardware are received prior to the disassembly of the vehicle. |

Make sure you park the vehicle on a level concrete or asphalt surface. Many times a vehicle is not level (side-to-side) from the factory & is usually not noticed until a lift kit has been installed, which makes the difference more visible. Using a measuring tape, measure the front & rear (both sides) from the ground up to the center of the fender opening above the axle. Record this information below for future reference.

Driver Side Front: _____

Passenger Side Front: _____

Driver Side Rear: _____

Passenger Side Rear: _____

Important Notes:

- If larger tires (10% more than the OEM diameter) are installed, speedometer recalibration will be necessary. Contact your local GM dealer or an authorized dealer for details.
- After installation, a qualified alignment facility is required to align the vehicle to the OEM specifications.

Component Box Breakdown:

Part #: C7350PB / C7350PH / C7350PM / C7350PN / C7350V / C14350PB / C14350PH / C14350PM / C14350PN / C14350PAB / C14350PAH / C14350PAM / C14350PAN / C15350V / C15350VA / C17350PAB / C17350PAH / C17350PAM / C17350PAN

Item #	Description	Qty	Item #	Description	Qty
GM735UCA-LS	GM 1500 DRV UPR STEEL ARM (Included With C7350P / C7350V / C14350P / C15350V)	1	GM735SKD-B	GM 1500 FRONT DIFF SKID PLT	1
GM735UCA-RS	GM 1500 PAS UPR STEEL ARM (Included With C7350P / C7350V / C14350P / C15350V)	1	H-BOX C7350P	HDWR BOX: C7350P / C14350P (Included With C7350P / C14350P / C14350PA / C17350PA)	1
GM1435UCA-LA	GM 1500 DRV UPR ALUM ARM (Included With C14350P / C14350V / C14350PA / C15350VA / C17350PA)	1	H-BOX C7350V	HDWR BOX: C7350V / C14350V (Included With C7350V / C15350V / C15350VA)	1
GM1435UCA-RA	GM 1500 PAS UPR ALUM ARM (Included With C14350P / C14350V / C14350PA / C15350VA / C17350PA)	1	B8517	BLACK MAX SHK W/BLK BOOT (Included With C7350PB / C14350PB / C14350PAB / C17350PAB)	2
GM735MS-S	GM 1500 3.5" FRONT SPACER	2	H7017	HYDRO SHOCK W/RED BOOT (Included With C7350PH / C14350PH / C14350PAH / C17350PAH)	2
GM735RMS-S	GM 1500 3.5" REAR SPACER (Included With C7350V / C15350V / C15350VA)	2	M9517	MONOTUBE SHOCK (Included With C7350PM / C14350PM / C14350PAM / C17350PAM)	2
GM735RSE-D	GM 1500 DRV REAR SHK BRKT (Included With C7350V / C15350V / C15350VA)	1	N8017	NITRO SHOCK W/RED BOOT (Included With C7350PN / C14350PN / C14350PAN / C17350PAN)	2
GM735RSE-P	GM 1500 PAS REAR SHK BRKT (Included With C7350V / C15350V / C15350VA)	1			

Hardware Box Breakdown:

Part # H-BOX C7350P (Included With C7350P / C14350P / C14350PA / C17350PA)

Part # H-BOX C7350V (Included With C7350V / C15350V / C15350VA)

Item #	Description	Qty	Item #	Description	Qty
RBF20	2" REAR BLOCK (Included With C7350P / C14350P / C14350PA / C17350PA)	2	HB-C7350DS	HDWR BAG: DIFF SPACERS	1
916X212X1012U	9/16 X 2 1/2 X 10 1/2 U-BOLT (Included With C7350P / C14350P / C14350PA / C17350PA)	4	HB-C7350RMS	HDWR BAG: REAR SPACERS (Included With C7350V / C15350V / C15350VA)	1
SBE503-L	REAR SWAY BAR END LINK (Included With C7350V / C15350V / C15350VA)	2	HB-C7350RSE	HDWR BAG: REAR SHK BRKTS (Included With C7350V / C14350V / C15350VA)	1
HB-10MM/NFN	HDWR BAG: 10MM FLG NUTS	1	HB-SBE503	HDWR BAG: SBE503 (Included With C7350V / C15350V / C15350VA)	1
HB-916	HDWR BAG: 9/16 LOCK NUTS (Included With C7350P / C14350P / C14350PA / C17350PA)	1	I-C7350	INST SHEET: C7350 / C14350	1

Hardware Bag Breakdown:

Part # HB-10MM/NFN

Item #	Description	Qty
10MMX1.5NFN	10MM X 1.5 NYL FLANGE NUT	6

Part # HB-916 (Included With C7350P / C14350P / C14350PA / C17350PA)

Item #	Description	Qty
916FTN	9/16 FINE THRD N/I LOCK NUT	8

Part # HB-C7350DS

Item #	Description	Qty	Item #	Description	Qty
TCLS10-B	1" DIFF LOWERING SPACER	2	12X120MMB	12MM X 120MM METRIC BOLT	2
14CTN	1/4 COARSE THR N/I LOCK NUT	2	12MMN	12MM METRIC N/I LOCK NUT	2
14SAEW	1/4 SAE WASHER	2	716SAEW	7/16 SAE WASHER	4

Part # HB-C7350RMS (Included With C7350V / C15350V / C15350VA)

Item #	Description	Qty	Item #	Description	Qty
GM735RMS-WASH	GM 1500 REAR SPCR WASHER	2	38SAEW	3/8 SAE WASHER	2
38X334CTB	3/8 X 3 3/4 COARSE THRD BOLT	2			

Part # HB-C7350RSE (Included With C7350V / C15350V / C15350VA)

Item #	Description	Qty	Item #	Description	Qty
916X112FTB	9/16 X 1 1/2 FINE THRD BOLT	2	916FTN	9/16 FINE THRD N/I LOCK NUT	4
916X3FTB	9/16 X 3 FINE THRD BOLT	2	916SAEW	9/16 SAE WASHER	8

Part # HB-SBE503 (Included With C7350V / C15350V / C15350VA)

Item #	Description	Qty	Item #	Description	Qty
HG5815-K	BLACK HOURGLASS BUSHING	4	12FTN	1/2 FINE THRD N/I LOCK NUT	4
141509	ES25 SLEEVE	4	12SAEW	1/2 SAE WASHER	8
12X3FTB	1/2 X 3 FINE THREAD BOLT	4			

Front Installation:

1. With the vehicle on flat level ground, set the emergency brake, & block the rear tires / wheels.
2. Raise the front of the vehicle & support the frame of the vehicle securely using jack stands.
3. Remove the front tires / wheels using a 22mm socket. (See Photo # 1)
4. Remove the OEM front skid plate using a 15mm socket / wrench (See Photo # 2)
5. If equipped, disconnect all electrical connections from the OEM electric power steering rack.
6. Disconnect the OEM outer tie rod ends from the OEM steering knuckles using a 21mm socket / wrench. (See Photo # 3) **Note:** It may be necessary to strike the OEM steering knuckles to dislodge the OEM tie rod ends. Be careful not to damage the OEM tie rod ends.
7. Disconnect the OEM ABS lines from the frame & OEM upper A-arms. (See Photo # 4)
8. Disconnect the OEM brake lines from the OEM upper A-arms using a 10mm socket / wrench. (See Photo # 4)
9. Disconnect the OEM sway bar end links from the OEM sway bar using a 15mm socket / wrench. (See Photo # 5)
10. While supporting the OEM steering knuckles, disconnect the OEM upper A-arms from the OEM steering knuckles using a 18mm socket / wrench. (See Photo # 6) **Note:** It may be necessary to strike the OEM steering knuckles to dislodge the OEM ball joints. Be careful not to damage the OEM ball joints.



Photo # 1



Photo # 2

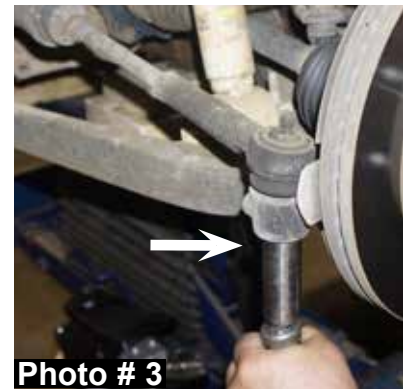


Photo # 3

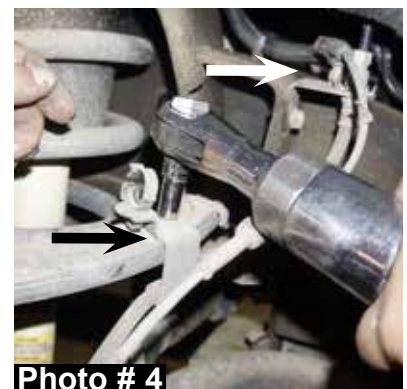


Photo # 4

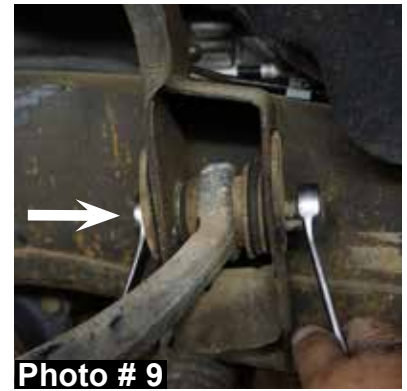


Photo # 5



Photo # 6

11. Remove the OEM strut assemblies using a 15mm socket / wrench 18mm wrench. (See Photos # 7 & # 8)
12. Mark the location of the OEM upper A-arm alignment cams & remove the OEM upper A-arms using a 21mm socket / wrench. (See Photo # 9)
13. While supporting the front differential, remove the rearward front differential mount bolts using a 15mm socket / wrench & 18mm socket / wrench. (See Photo # 10)
14. Slightly lower the front differential & install the new Skyjacker front differential lowering spacers between the front differential mounts & the frame using the supplied 12mm x 120mm bolts, washers, nuts, & a 19mm socket / wrench. (See Photo # 11)
15. Install the new Skyjacker front differential skid plate using the OEM hardware & a 15mm socket / wrench. (See Photo # 12)
16. Install the new Skyjacker strut spacers on top of each OEM strut assembly using the OEM hardware & a 18mm wrench. (See Photo # 13)
17. Install the new Skyjacker spacer / OEM strut assemblies using the supplied 10mm flange nuts, OEM lower hardware, a 15mm socket / wrench. (See Photos # 8 & # 14)



18. Install the new Skyjacker upper A-arms & align the location of the OEM upper A-arm alignment cams using the OEM hardware & a 21mm socket / wrench. Do not fully tighten at this time. (See Photo # 15)

19. While supporting the OEM steering knuckles, connect the new Skyjacker upper A-arms to the OEM steering knuckles & fully tighten all upper A-arm & ball joint hardware using the supplied cotter pins, nuts, OEM hardware, a 18mm socket / wrench, & 21mm socket / wrench. (See Photo # 16)

20. Grease the new Skyjacker upper A-arm ball joints using a grease gun.

21. Connect the OEM brake lines to the new Skyjacker upper A-arms using the supplied 1/4" nuts, washers, & a 7/16" socket / wrench. (See Photo # 17)

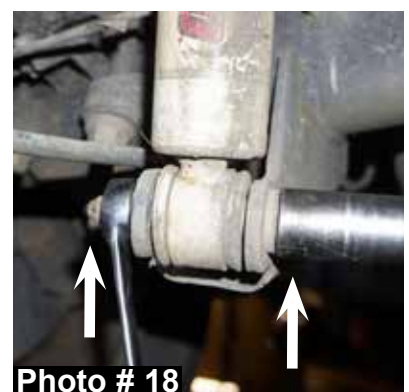
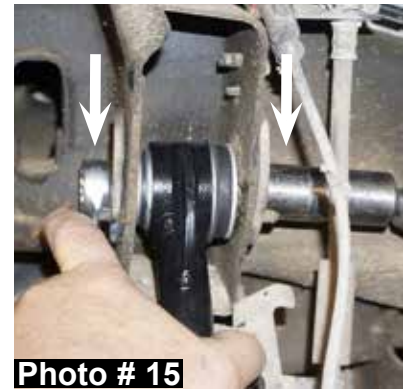
22. Connect the OEM sway bar end links to the OEM sway bar using a 15mm socket / wrench. (See Photo # 5)

23. Connect the OEM ABS lines to the frame & new Skyjacker upper A-arms. (See Photo # 4)

24. Connect the OEM outer tie rod ends to the OEM steering knuckles using a 21mm socket / wrench. (See Photo # 3)

25. If equipped, connect all electrical connections to the OEM electric power steering rack.

26. Install the front tires / wheels using a 22mm socket & lower the front of the vehicle to the ground. (See Photo # 1)



Rear Installation: (Pick Up Models)

1. Block the front tires / wheels, raise the rear of the vehicle, & support the frame of the vehicle securely using jack stands.

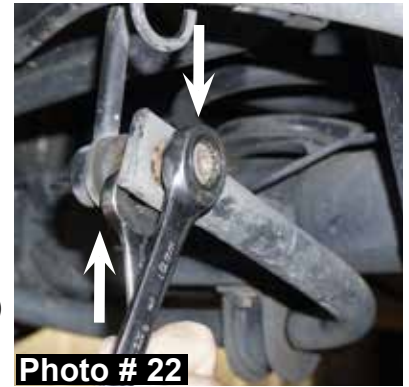
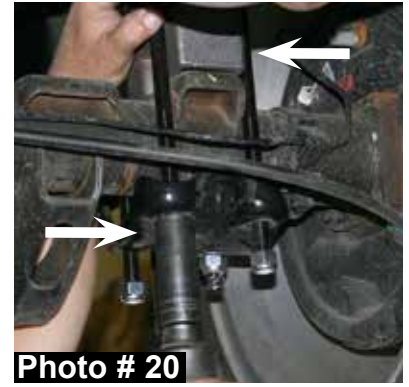
2. Remove the rear tires / wheels using a 22mm socket.

3. Disconnect the OEM ABS lines from the rear differential.

4. Support the rear differential & remove the OEM rear shocks using a 21mm socket / wrench. (See Photo # 18)



5. Remove the OEM U-bolts using a 21mm socket / wrench. (See Photo # 19)
6. Install the new Skyjacker rear lift blocks on top of the OEM rear blocks & install the new Skyjacker U-bolts using the supplied 9/16" nuts & a 7/8" socket / wrench. (See Photo # 20)
7. Install the new Skyjacker rear shocks using the OEM hardware & a 21mm socket / wrench. (See Photo # 18)
8. Connect the OEM ABS lines to the rear differential.
9. Install the rear tires / wheels using a 22mm socket & lower the rear of the vehicle to the ground.



Rear Installation: (SUV Models)

1. Block the front tires / wheels, raise the rear of the vehicle, & support the frame of the vehicle securely using jack stands.
2. Remove the rear tires / wheels using a 22mm socket.
3. Disconnect the E-brake cable bracket from the passenger side frame using a 13mm socket / wrench.
4. Disconnect the OEM ABS lines from the frame & rear differential.
5. Support the rear differential & disconnect the OEM rear shocks from the rear differential using a 21mm socket / wrench. (See Photo # 21)
6. Remove the OEM rear sway bar end links using a 18mm socket / wrench & 19mm socket / wrench. (See Photo # 22)
7. Disconnect the OEM rear brake lines from the rear differential using a 13mm socket / wrench. (See Photo # 23)
8. Disconnect the OEM rear track bar from the frame using a 21mm socket / wrench. (See Photo # 24)

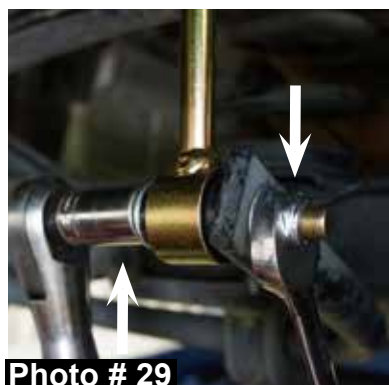


9. While checking for appropriate slack in ABS lines, brake lines, differential vent hose, & etc. Lower the rear differential & remove the OEM rear coil springs.
10. Install the new Skyjacker rear coil spring spacer washers on top of the OEM rear coil spring mounts. (See Photo # 25)
11. Install the new Skyjacker rear coil spring spacers using the supplied 3/8" x 3 3/4" bolts, washers, & a 9/16" socket. (See Photo # 26)
12. Install the OEM rear coil spring isolators & OEM rear coil springs.
13. Raise the rear differential in order to load the OEM rear coil springs & install the new Skyjacker rear shock relocation brackets using the supplied 9/16" x 1 1/2" bolts, 9/16" x 3" bolts, washers, nuts, a 13/16" socket / wrench, & 7/8" socket / wrench. (See Photo # 27)
14. Connect the OEM rear shocks to the new Skyjacker rear shock relocation brackets using the OEM hardware & a 21mm socket / wrench. (See Photo # 28)
15. Connect the OEM rear track bar to the frame using a 21mm socket / wrench. (See Photo # 24)
16. Connect the OEM rear brake lines to the rear differential using a 13mm socket / wrench. (See Photo # 23)
17. Install the new Skyjacker rear sway bar end links using the supplied bushings, sleeves, 1/2" x 3" bolts, washers, nuts, & a 3/4" socket / wrench. (See Photo # 29)
18. Install the rear tires / wheels using a 22mm socket & lower the rear of the vehicle to the ground.



Final Notes:

- After the installation is complete, double check that all nuts & bolts are tight. Refer to the following chart for the proper torque specifications. (Do not retighten the nuts & bolts where thread lock compound was used.)
- With the vehicle placed on the ground, cycle the steering lock to lock & inspect the steering, suspension, brake lines, front & rear drivelines, fuel lines, & wiring harnesses for proper operation, tightness, & adequate clearance.



- Have the headlights readjusted to the proper settings.
- Have a qualified alignment center realign the vehicle to the OEM specifications.
- After the first 100 miles, check all hardware for the proper torque & periodically thereafter.

TORQUE SPECIFICATIONS					
<u>INCH SYSTEM</u>			<u>METRIC SYSTEM</u>		
Bolt Size	Grade 5	Grade 8	Bolt Size	Class 8.8	Class 10.9
5/16	15 FT LB	20 FT LB	6MM	5 FT LB	9 FT LB
3/8	30 FT LB	35 FT LB	8MM	18 FT LB	23 FT LB
7/16	45 FT LB	60 FT LB	10MM	32 FT LB	45 FT LB
1/2	65 FT LB	90 FT LB	12MM	55 FT LB	75 FT LB
9/16	95 FT LB	130 FT LB	14MM	85 FT LB	120 FT LB
5/8	135 FT LB	175 FT LB	16MM	130 FT LB	165 FT LB
3/4	185 FT LB	280 FT LB	18MM	170 FT LB	240 FT LB

- **The above specifications are not to be used when the bolt is being installed with a bushing.**

Seat Belts Save Lives, Please Wear Your Seat Belt.



Jesus Forgives,
Rocks Don't

Jesus Christ Died For You.

John 3:16

For God so loved the world that He gave His only Son, so that everyone who believes in Him should not perish, but have everlasting life.
Romans 3:23

For all have sinned; all fall short of God's glorious standard.
Ephesians 2:8

God saved you by his special favor when you believed. And you can't take credit for this; it is a gift from God.
Psalms 18:2

The Lord is my Rock, my fortress, and my savior; my God is my Rock, in whom I find protection. He is my shield, the strength of my salvation, and my stronghold.
Romans 10:9-10

That if you shall confess with thy mouth the Lord Jesus, and shall believe in your heart that God hath raised him from the dead, you shall be saved. For with the heart man believeth unto righteousness; and with the mouth confession is made unto salvation.

Pray This Simple Prayer:

God, I come to You admitting I have sinned against You and I need you to take control of my life. The Bible says anyone who calls on the name of the Lord will be saved. I am calling on You, Jesus. I ask that You come live in my heart and be the Lord over my life today. I do believe You died on the cross for me and came back to life to give me life! Thank You, Lord Jesus for a new life in You!

Now, go and tell somebody about your new life in Jesus, get a Bible, begin to read it, and go to a Bible believing church.

If you would like someone to pray with you, call Kenneth Copeland Ministries anytime at 800-600-7395.

To listen to commercial free Christian radio on the web, go to www.887fm.org



Discover other performance suspension parts on our website.