



2021 Ford Bronco 4WD Rear Shock Lower Skid Plates Installation Instructions

Required Tools List:

- SAE Sockets \ Wrenches (1-1/16" Wrench)
- Metric Sockets \ Wrenches (17mm & 27mm)
- Torque Wrench
- Safety Glasses
- Wheel Chock
- Jack Stands
- Floor Jack



Before beginning the installation, read these instructions & the enclosed driver's WARNING NOTICE thoroughly & completely. Also affix the WARNING decal in the passenger compartment in clear view of all occupants. Please refer to the Parts List to insure that all parts & hardware are received prior to disassembly of the vehicle.

Important Notes:

- Will Fit All 2021+ Bronco 2-Door & 4-Door Models and Packages.
- Will NOT Fit the Bronco Sport.

Component Box Breakdown:

Part #: FB21RSS

Item #	Description	Qty
FB21RSS-D	REAR SHOCK SKID PLATE, DR	1
FB21RSS-P	REAR SHOCK SKID PLATE, PA	1
HB-FB21RSS	HDWR BAG: FB21RSS	1
I-FB21RSS	INST SHEET: FB21RSS	1

Hardware Bags Breakdown:

Part #: HB-FB21RSS

Item #	Description	Qty
FB21RSS-TB	10MM TAB NUT	2
10MMX30MMB	10MM X 30MM METRIC BOLT	2
38SAEW	3/8" SAE WASHER	2
LT100	THREAD LOCKING COMPOUND	1

Installation:

Note: Save all factory components and hardware for reuse, unless noted.

1. Raise the rear of the vehicle, support the frame rails using jack stands.
2. Support the rear axle with a hydraulic jack. Allow ample room to lower the rear axle.

Note: Perform Steps 3-7 on One Side At A Time.

3. Disconnect the OEM rear shock lower mounting bolt & tab nut / nut plate using a 27mm | 1-1/16" socket \ wrench. (See Photo # 1)

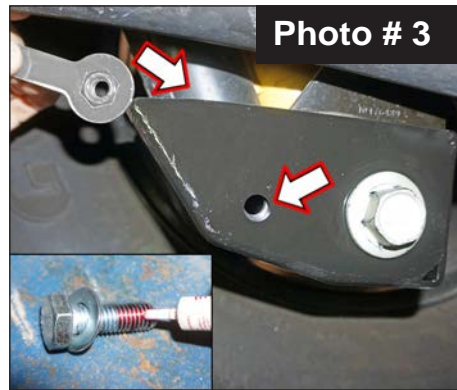
4. **Note:** The Skyjacker Rear Shock Lower Skid Plates are Side Specific. (# FB21RSS-D Driver Side & # FB21RSS-P Passenger Side). With the shock inside the lower OEM mount, install the Skyjacker Rear Shock Lower Skid Plate over the outside of the mount. Align the large rear hole of the Skyjacker skid plate, with the OEM mount & OEM shock. Attach using the factory hardware and a 27mm | 1-1/16" socket \ wrench. (See Photo # 2) Loosely tighten at this time.



5. Rotate the skid plate to align the small front skid plate mounting hole with the OEM mounting hole. (See Photo # 2)

6. Insert the supplied 3/8" SAE Washer onto the supplied 10mm x 30mm Bolt. Add supplied # LT100 Thread Locking Compound to bolt. Hold the supplied 10mm Tab Nut inside the skid plate and attach with 10mm bolt \ washer (See Photo # 3)

7. Tighten & torque 10mm hardware using a 17mm socket \ wrench. [45 ft. / lbs.] (See Photo # 4)



Note: Repeat Steps 3-7 on the Opposite Side.

8. Lower the vehicle to the ground.

9. Tighten & torque the OEM rear shock lower mounting bolt & tab nut using a 27mm | 1-1/16" socket \ wrench. [240 ft. / lbs.]

Final Notes:

- After the installation is complete, double check that all nuts & bolts are tight. **Note:** Do Not re-tighten the nuts & bolts where thread lock compound was used.
- After the first 100 miles, check all hardware for the proper torque & periodically thereafter.

Seat Belts Save Lives, Please Wear Your Seat Belt.