



**2014 & Up Ram 2500 4WD
2013 & Up Ram 3500 4WD
2" Front Metal Spacer Kit
Installation Instructions**

REQUIRED TOOL LIST:

- Safety Glasses
- Metric / Standard Wrenches & Sockets
- Floor Jack
- Jack Stands
- Measuring Tape
- Torque Wrench



Component Box Breakdown:

Part #: R1325MS / R1325MSB

Item #	Description	Qty
R1325MS2-S	2" METAL COIL SPRING SPACER	2
R14SE20-B	2" SHOCK EXTENSION BRKT (Included With R1325MSB)	2
HB-R1325MS	HDWR BAG: R1325MS SPACERS	1

Item #	Description	Qty
HB-R14SE20	HDWR BAG: R14SE20 SHK BRKT (Included With R1325MSB)	1
I-R1325MS	INST SHT: R1325MS / R1325MSB	1

Hardware Bag Breakdown:

Part # HB-R1325MS

Item #	Description	Qty
716X114FTB	7/16 X 1 1/4 FINE THREAD BOLT	2
716SAEW	7/16 SAE WASHER	2

Item #	Description	Qty
716FTN	7/16 FINE THREAD LOCK NUT	2
716PN	7/16 PUSH NUT	2

Part # HB-R14SE20

Item #	Description	Qty
14X80MMB	14MM X 80MM METRIC BOLT	2
916SAEW	9/16 SAE WASHER	4

Item #	Description	Qty
14MMN	14MM METRIC LOCK NUT	2

Installation:

1. With the vehicle on a level concrete or asphalt surface, set the emergency brake & block the rear tires / wheels.
2. Lift the front of the vehicle & support the vehicle using jack stands.
3. Remove the front tires / wheels. (See Photo # 1)
4. Disconnect the OEM front shocks at each lower mount. (See Photo # 2)
5. Disconnect the OEM sway bar end links from the OEM sway bar. (See Photo # 3)



Photo # 1

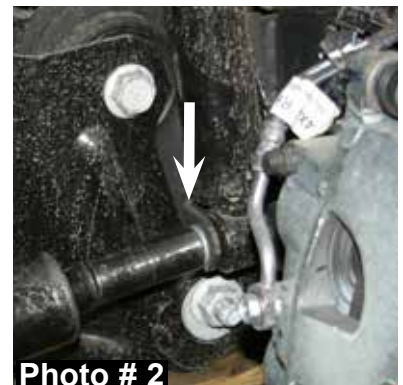


Photo # 2



Photo # 3

6. Disconnect the OEM drag link from the OEM pitman arm. (See Photo # 4)

7. Disconnect the OEM ABS / brake line brackets from the front axle. (See Photo # 5)

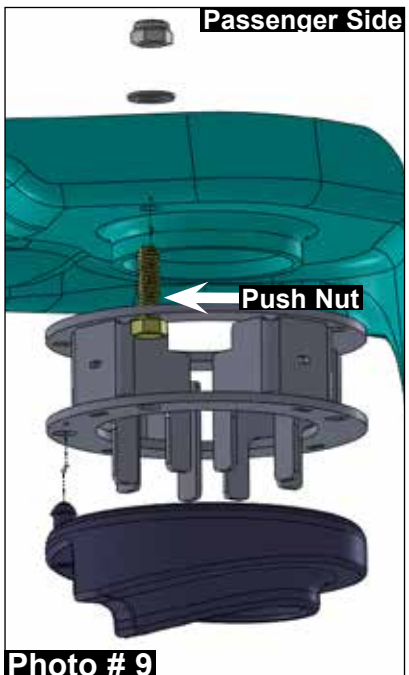
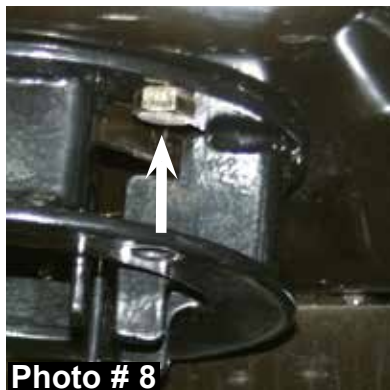
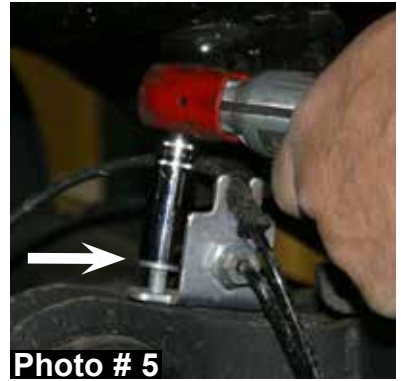
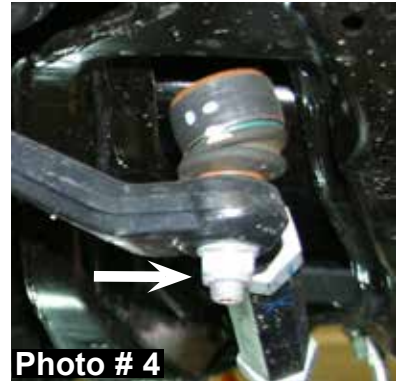
8. Disconnect the OEM track bar from the upper frame mount. (See Photo # 6)

9. While checking for appropriate slack in ABS lines, brake lines, differential breather hose, & etc. Lower the front axle & remove the OEM coil springs & rubber isolators. (See Photo # 7)

10. With the Skyjacker logo facing outward towards the front tires / wheels, install the new Skyjacker metal coil spring spacers to the OEM coil spring isolator mounting locations using the supplied 7/16" x 1 1/4" bolts, push nuts, washers, & hex nuts. (See Photo # 8 & # 9)
Note: The supplied 7/16" bolt for the driver side will be installed in the mounting hole located to the right of the Skyjacker badge & the supplied 7/16" bolt for the passenger side will be installed in the mounting hole located behind the Skyjacker badge.

11. **Driver Side:** Install the driver side OEM coil spring isolator to the new driver side Skyjacker metal coil spring spacer using the mounting hole directly below the previously installed 7/16" bolt.

12. **Passenger Side:** Install the passenger side OEM coil spring isolator to the new passenger side Skyjacker metal coil spring spacer using the mounting hole to the left of the previously installed 7/16" bolt. (See Photo # 9)



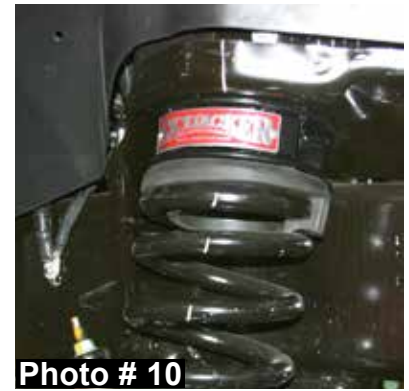
13. Install the OEM coil springs & raise the front axle in order to load the OEM coil springs. (See Photo # 10)

14. Connect the OEM track bar to the upper frame mount using the OEM hardware. (See Photo # 6)

15. Connect the OEM ABS / brake line brackets to the front axle using the OEM hardware. (See Photo # 5)

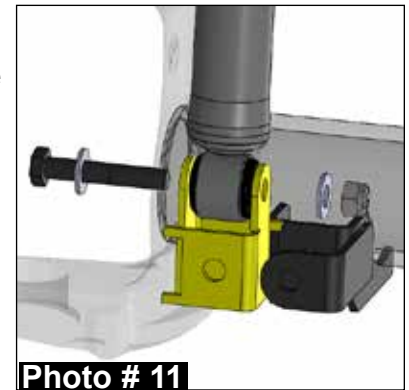
16. Connect the OEM drag link to the OEM pitman arm using the OEM hardware. (See Photo # 4)

17. Connect the OEM sway bar end links to the OEM sway bar using the OEM hardware. (See Photo # 3)



Part # R1325MS / OEM Front Shock Installation:

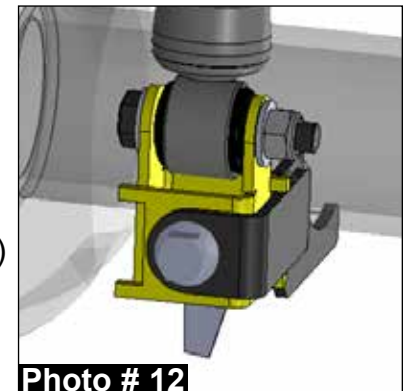
18. Connect the OEM front shocks at each lower mount using the OEM hardware. (See Photo # 2) Proceed to Step # 21.



Part # R1325MSB / OEM Front Shock Installation:

19. Install the new Skyjacker lower shock extension brackets to the OEM front shocks using the supplied 14mm x 80mm bolts, washers, & nuts. (See Photo # 11)

20. Connect the new Skyjacker lower shock extension brackets to the OEM front shock mounts using the OEM hardware. (See Photo # 12)



21. Install the front tires / wheels & lower the front of the vehicle to the ground. (See Photo # 1)

Final Notes:

- After the installation is complete, double check that all nuts & bolts are tight. Refer to the following chart for the proper torque specifications. (Do not retighten the nuts & bolts where thread lock compound was used.)
- With the vehicle placed on the ground, cycle the steering lock to lock & inspect the steering, suspension, brake lines, front & rear drivelines, fuel lines, & wiring harnesses for proper operation, tightness, & adequate clearance.
- Have the headlights readjusted to the proper settings.
- Have a qualified alignment center align the vehicle to the OEM specifications.
- After the first 100 miles, check all of the hardware for the proper torque & periodically thereafter.

TORQUE SPECIFICATIONS

<u>INCH SYSTEM</u>			<u>METRIC SYSTEM</u>		
Bolt Size	Grade 5	Grade 8	Bolt Size	Class 8.8	Class 10.9
5/16	15 FT LB	20 FT LB	6MM	5 FT LB	9 FT LB
3/8	30 FT LB	35 FT LB	8MM	18 FT LB	23 FT LB
7/16	45 FT LB	60 FT LB	10MM	32 FT LB	45 FT LB
1/2	65 FT LB	90 FT LB	12MM	55 FT LB	75 FT LB
9/16	95 FT LB	130 FTLB	14MM	85 FT LB	120 FT LB
5/8	135 FT LB	175 FT LB	16MM	130 FT LB	165 FT LB
3/4	185 FT LB	280 FT LB	18MM	170 FT LB	240 FT LB

- The above specifications are not to be used when the bolt is being installed with a bushing.

Seat Belts Save Lives, Please Wear Your Seat Belt.